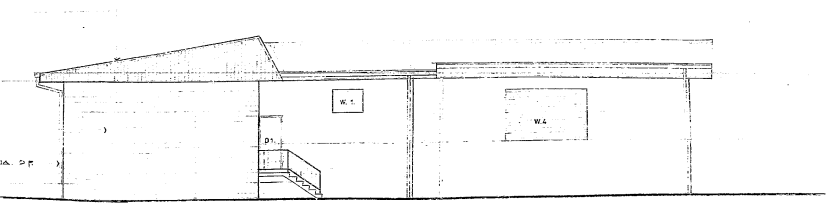
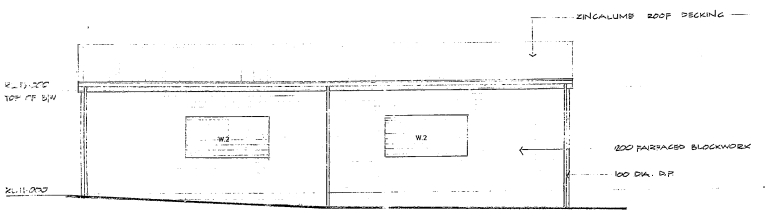


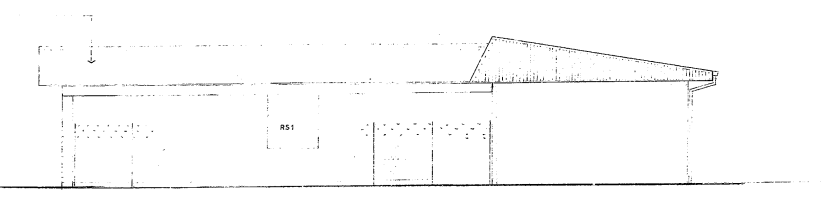
elevation a - a



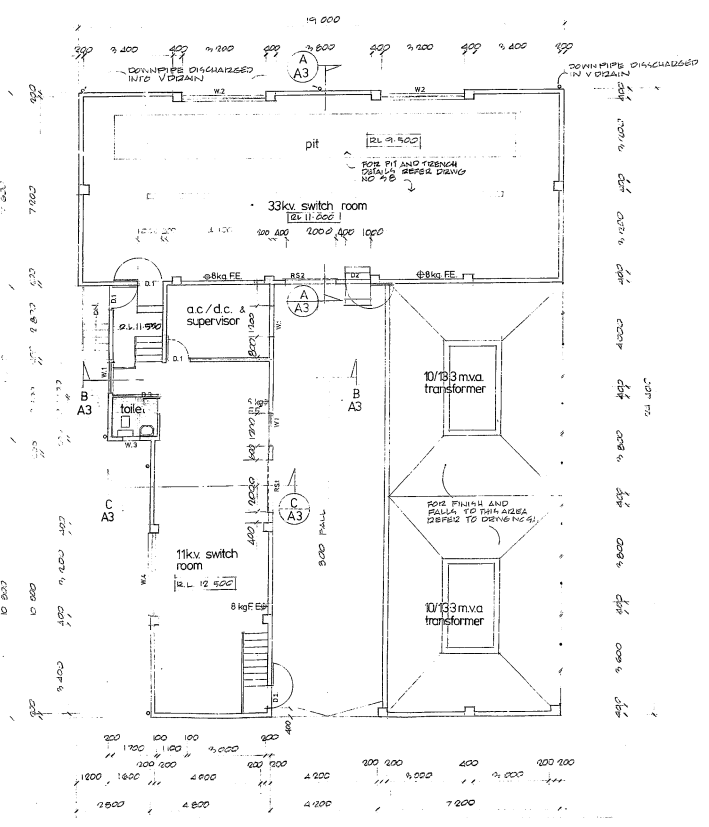
elevation b - b



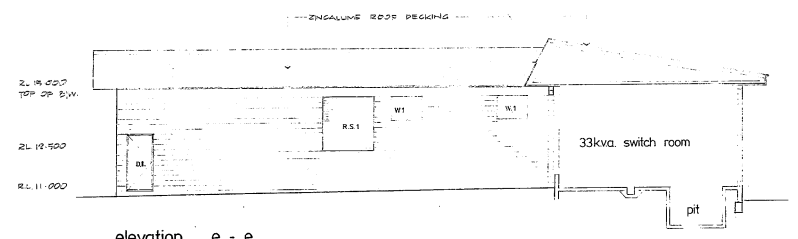
elevation c - c



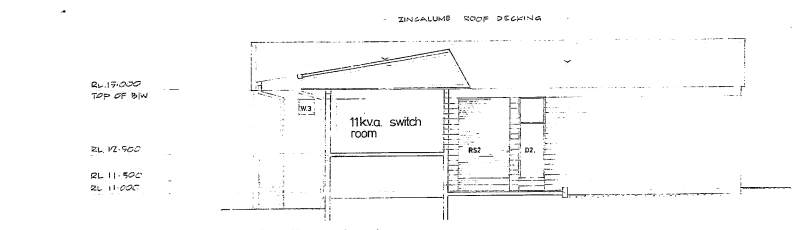
elevation d - d



floor plan



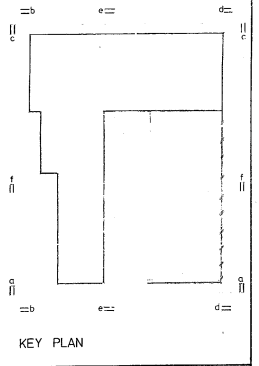
elevation e - e



elevation f - f

LEGEND
 Φ8kg FE. 8 kilogram fire extinguisher
 Φ5kg FE. 5 kilogram fire extinguisher

REVISIONS 20.02.81
 1. WALL ON LINE J BETWEEN 600Y
 1.10'S DELETED REPLACE WITH
 FENCE AND NEW COLUMN
 2. POSITION OF STAIRS, D2 & R62
 CHANGED
 3. BATTERY ROOM DELETED
 4. ELEVATIONS G, D, S, T REVISED
 5. DELETE EXHAUST FAN.
 REVISION 5 21.04.81
 1. CHANGE POSITION OF R2C AND D2.
 2. REMOVE EXHAUST FAN.
 3. DELETE DOOR TO BATTERY ROOM
 REVISION 6 28.08.83
 1. REMOVE DOOR TO BATTERY ROOM
 2. STAIR ON FLOOR PLAN SEE 11/82
 REVISION 7 03.09.83
 1. PAINT BAY WALLS 400 X 2000 700 X 2000



FIJI ELECTRICITY
 AUTHORITY

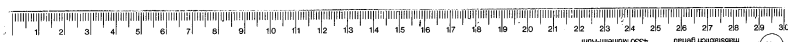
HIBISCUS PARK
 33kv. SUBSTATION

plan & elevations

DEG NO 52-CC6-002

Yee/Morgan & Co. Ltd.
 Consulting Civil & Structural Engineers
 Suite G, Rawasa Development Building
 Grantham Road, Suva, Fiji
 G.P.O. Box 1180
 Telephones: 363627, 383663

design	H.W. YEE	drawn	H.W. YEE
traced	H. POWELL	checked	H. POWELL
scale	1:100	date	SEPTEMBER, 1980
project	2057	dwg. no.	A. 2
		revision	D



LEGEND

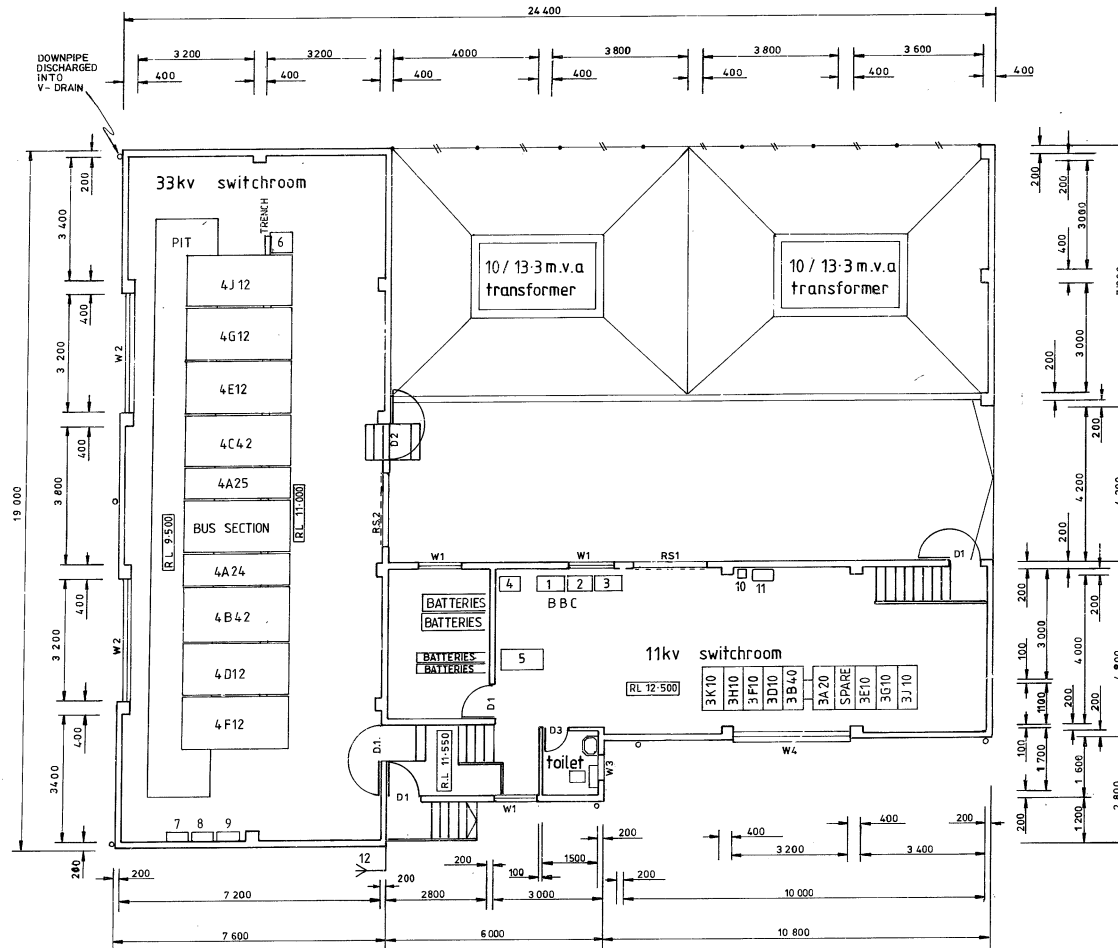
33 kv SWITCHGEARS

- 4J12 CUNNINGHAM ROAD C
- 4F12 WAILEKUTU CREEK
- 4D12 CUNNINGHAM ROAD A
- 4B42 TRANSFORMER T1
- 4A24 BUS 1 TRANSITION PANEL
BUS SECTION
- 4A25 BUS 2 TRANSITION PANEL
- 4C42 TRANSFORMER T2
- 4E12 SUVA
- 4G12 CUNNINGHAM ROAD B

11kv SWITCHGEARS

- 3J10 QUEENS
- 3G10 SUVA SUBSTATION
- 3E10 BREWERY
SPARE
- 3A20 BUS SECTION CIRCUIT BREAKER
- 3B40 TRANSFORMER NO.1 CIRCUIT BREAKER
- 3D10 KINGYA
- 3F10 WAILADA
- 3H10 TAMAVUA RIVER (ISOLATED)
- 3K10 MARINE

- 1 TRANSDUCER (BBC)
- 2 INDUCTIVE 33 SYSTEM BSS 1RS-01 (BBC)
- 3 INTERFACE (BBC)
- 4 BATTERY CHARGER
- 5 AC/DC BOARD WITH CHARGER
- 6 TAP CHARGER PANEL
- 7 PILOT ISOLATION TRANSF. CUBICLE
- 8 PILOT ISOLATION TRANSF. CUBICLE
- 9 PILOT ISOLATION CUBICLE
- 10 } RADIO TELEPHONE AND BEARER
- 11 }
- 12 ANTENNA



FLOOR PLAN

DRAWN: S. GOUNDER 7: JULY 1987		FIJI ELECTRICITY AUTHORITY HIBISCUS PARK 33kv SUBSTATION FLOOR PLAN - PHYSICAL LAYOUT.	
CHECKED: I. NAYACAKA 21: 09: 87			
CHIEF DRAUGHTSMAN: R. K. LEVACI 24: 9: 87		A2 52 C06 004 0	
DESIGN ENGINEER:		SCALE - 1 : 100	
PRIN. DESIGN & PLANN. ENGINEER:			

0 ORIGINAL ISSUE	7:7:87 S.G.	52-C06-002	HIBISCUS PARK 33kv SUBSTATION - plan & elevations.
No. REVISION	DATE BY CHK PSD APP	DRAWING No.	TITLE