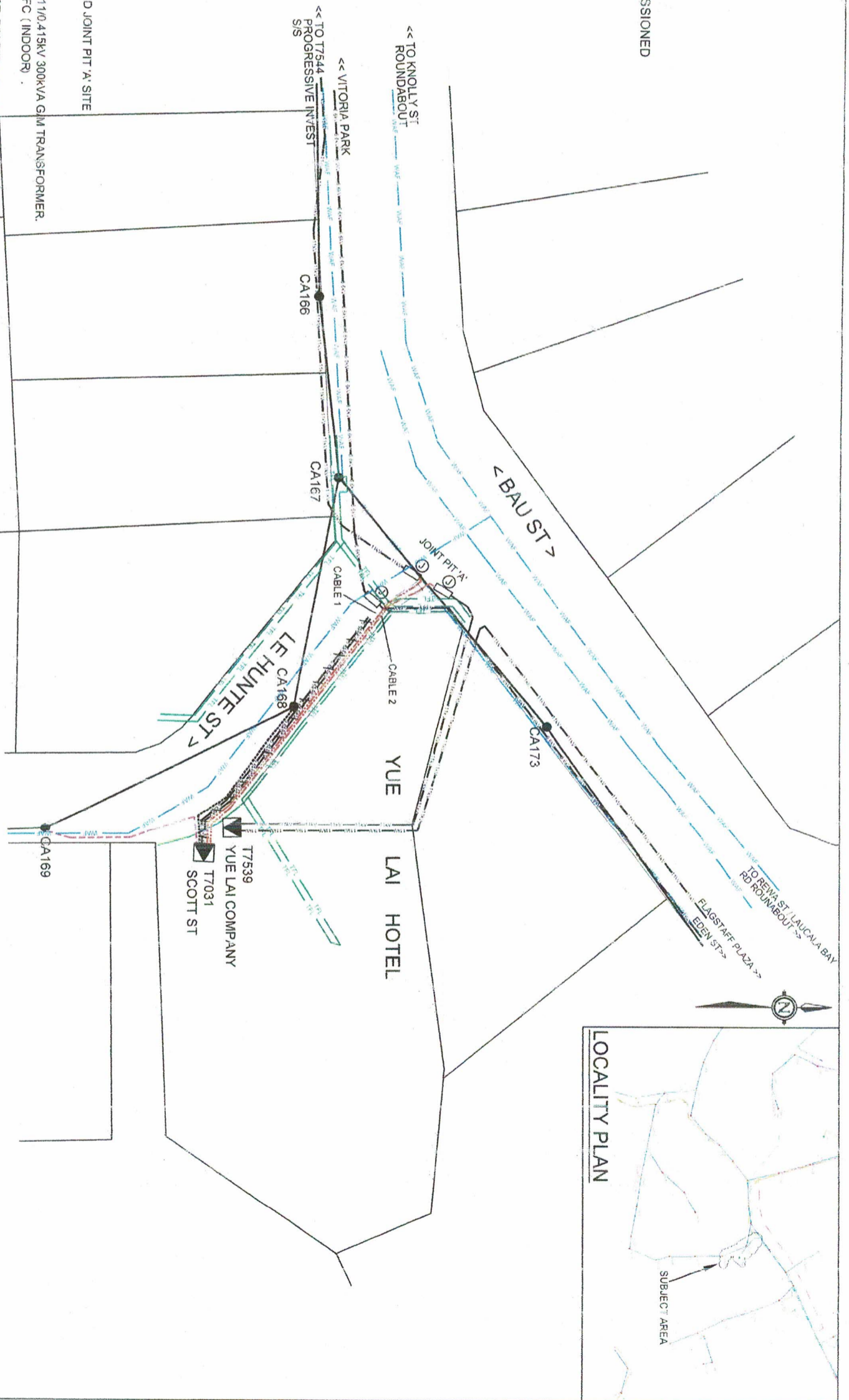


**LEGEND**

- LV POLE
- ◻ EXISTING SUBSTATION
- ▭ 150mm Ø PVC CONDUIT
- PROPOSED STRAIGHT THRU JOINT
- EXISTING O/H CONDUCTOR
- EXISTING 11KV U/G CABLE
- EXISTING 6.6KV U/G CABLE TO BE DECOMMISSIONED
- EXISTING 6.6KV U/G CABLE
- PROPOSED 11KV U/G CABLE
- EXISTING 0.415KV U/G CABLE
- PROPOSED 0.415KV U/G CABLE
- EXISTING WAF PIPE LINE (INDICATIVE)
- EXISTING TPL (INDICATIVE)



**NOTES:**

1. DIG & LAY 2 x 240mm<sup>2</sup> 3C XLPE 11KV CABLE FROM PROPOSED JOINT PIT 'A' SITE TO SCOTT ST S/S T7031 AS PROPOSED. RL = 70m
2. UPGRADE SCOTT ST S/S T7031 TO 11KV AS FOLLOWS:
  - a. REPLACE EXISTING 300KVA G/M TRANSFORMER WITH 11/0.415KV 300KVA G/M TRANSFORMER.
  - b. REPLACE EXISTING HV SWITCHGEAR WITH SAFELINK CFC (INDOOR).
  - c. UPGRADE LV DISTRIBUTION BOARD TO 4 WAY.
3. CUT EXISTING 11KV CABLES BETWEEN PROGRESSIVE INVEST. P/M T7544 & YUE LAI P/M T7539 & MAKE JOINTS WITH NEW CABLES AS FOLLOWS AT JOINT PIT 'A':
  - CABLE 1 - JOIN END OF FIRST CABLE (FROM SCOTT ST S/S) WITH END OF EXISTING CABLE FROM PROGRESSIVE INVESTMENT PAD-MOUNT T7544 & TERMINATE OTHER END AT UPGRADED CFC SAFELINK S/G.
  - CABLE 2 - JOIN END OF SECOND CABLE (FROM SCOTT ST S/S) WITH END OF EXISTING CABLE FROM YUE LAI PAD-MOUNT TRANSFORMER, T7539 & TERMINATE OTHER END AT UPGRADED CFC SAFELINK S/G.
4. LABEL HV SWITCHGEARS REPECTIVELY AS PER CONNECTION AS FOLLOWS:
  - a. AT PROGRESSIVE INVEST P/M T7544: CHANGE S/M LABEL "YUE LAI" TO "SCOTT ST".
  - b. AT YUE LAI P/M T7539: CHANGE S/M LABEL "PROGRESSIVE INVEST" TO "SCOTT ST".
  - c. AT SCOTT ST S/S T7031: LABEL S/M TO "PROGRESSIVE INVEST" & "YUE LAI" AS PER CONNECTIONS.
5. COMMISSION 300KVA G/M 11/0.415KV TRANSFORMER AT SCOTT ST S/S T7031 ON 11KV DAMODAR FEEDER.
6. UPGRADE LV CABLES TO 1 x 240mm<sup>2</sup> 12 TC CU CABLE FOR EACH PHASE FROM UPGRADED TRANSFORMER TO UPGRADED LV BOARD & TERMINATE AT BOTH ENDS. RL = 8m.
7. a. DIG & LAY 1 x 240mm<sup>2</sup> 4C CU CABLE FROM SCOTT ST S/S T7031 UPGRADED LV BOARD TO POLE CA169. RL = 50m
8. THE PROPOSED CABLE TO FEED LV LINES ON LE HUNTE ST.
9. RE-DIRECT EXISTING LV CABLE FROM POLE CA168 TO THE NEW LV BOARD AND CONNECT (TO SUSTAIN SUPPLY TO BAU ST).
10. MAKE JOINT ON EXISTING 6.6KV CABLE AT SUITABLE LOCATION FOR CONTINUITY OF 6.6KV CIRCUIT AND UPDATE LABELS ON AFFECTED 6.6KV S/S SWITCHGEARS.

**POLE SCHEDULE**

POLE NO.	POLE DESCRIPTION WOOD/CONC OR EXIST	POLE LENGTH STRENGTH MM	SPAN m	POLE TOP DESCRIPTION OR DRESSINGS	STAYS	REMARKS
CA168	EXIST	EXIST	EXT	EXIST		EXISTING POLE
CA169	EXIST	EXIST	EXT	7B+5B		PROP CABLE TERMINATION WITH LV LINKS

**ENERGY FIJI LIMITED**

UPGRADING OF 6.6KV TO 11KV GRID  
 SCOTT S/S T7031, ON FLAGSTAFF PLAZA FEEDER  
 SUVA DISTRICT (SR06.15A-5)

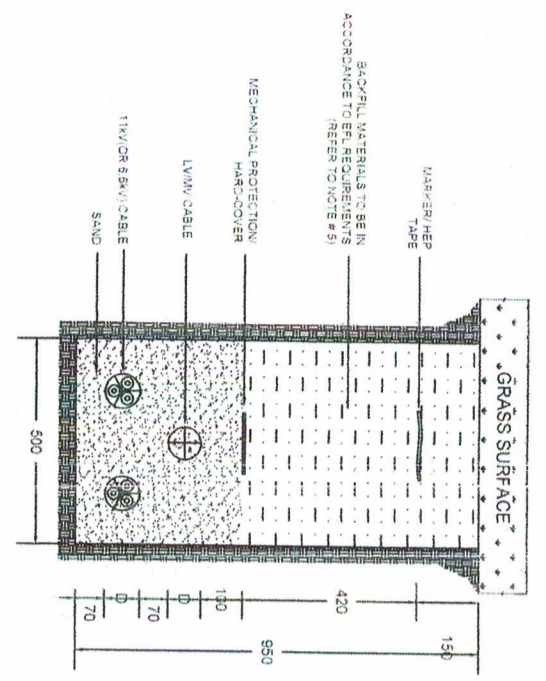
DRAWING NUMBER: A3 09 N48 456  
 SCALE: NTS

No.	REVISION	DATE	BY	CHK	DEPT	HOD
0	ORIGINAL ISSUE FOR SR06.15A-5	16.01.26	PS	KVP	PK	AA

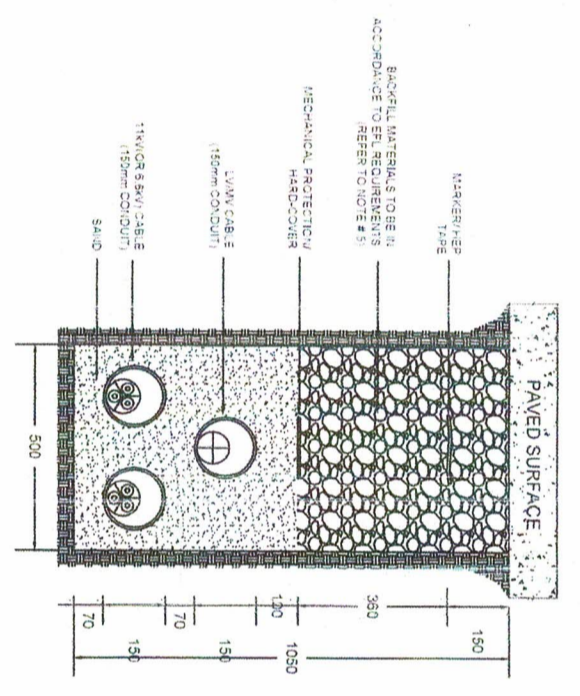
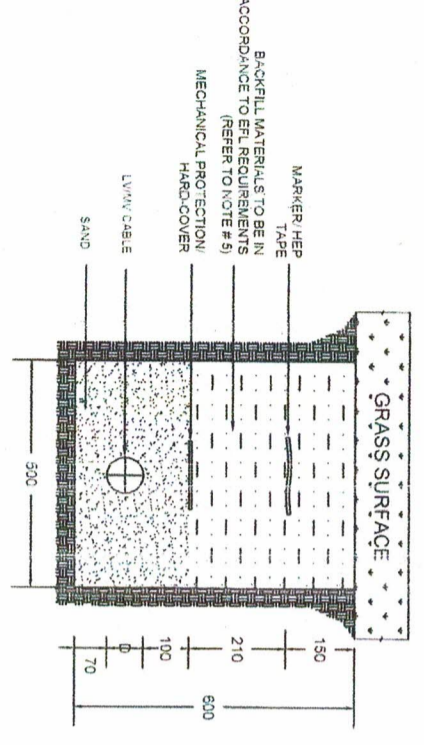


DRAWN	PRIYA	16.01.26
CHECKED		22.01.26
GIS COORDINATOR		
TEAM LEADER		22.01.26
DESIGN & PLANNING ENGINEER		22/01/26
HEAD OF DEPARTMENT		22/11/26

11kV + LV/MV TRENCH



LV/MV TRENCH



FINAL HV CIRCUIT (6.6kV)



LEGEND - HV CIRCUIT

- PROPOSED STRAIGHT THRU JOINT
- EXISTING 6.6kV U/G CABLE

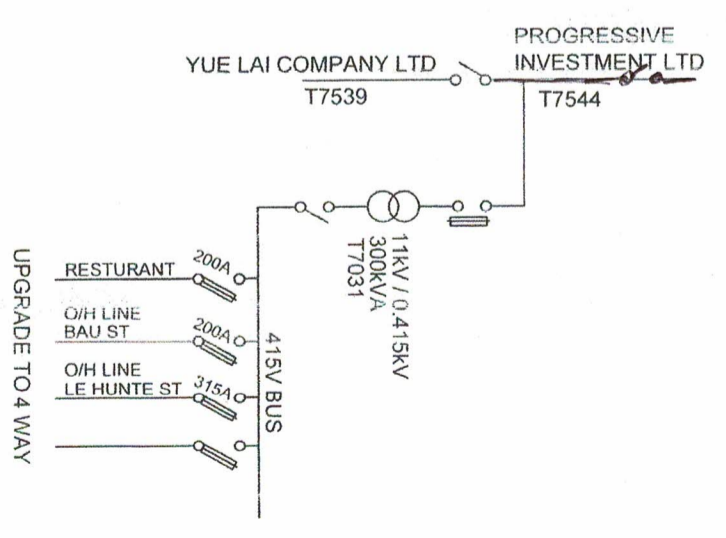
FINAL HV CIRCUIT (11kV)



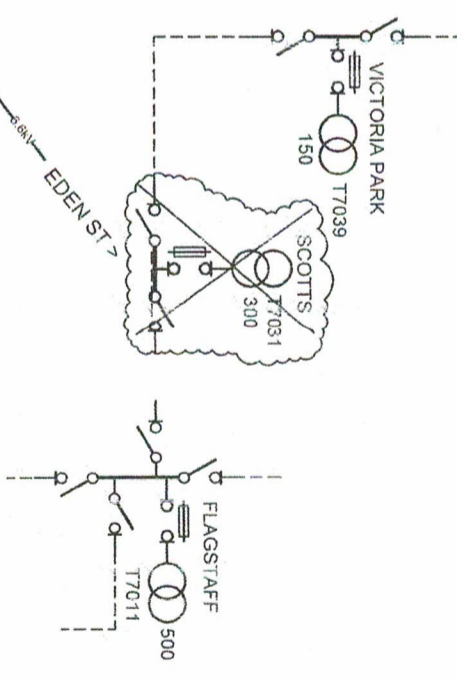
LEGEND - HV CIRCUIT

- EXISTING SUBSTATION
- 150mm Ø PVC CONDUIT
- PROPOSED STRAIGHT THRU JOINT
- EXISTING 11kV U/G CABLE
- PROPOSED 2 x 240mm² 3C XLPE HV U/G CABLE
- TOTAL ROUTE LENGTH = 70m

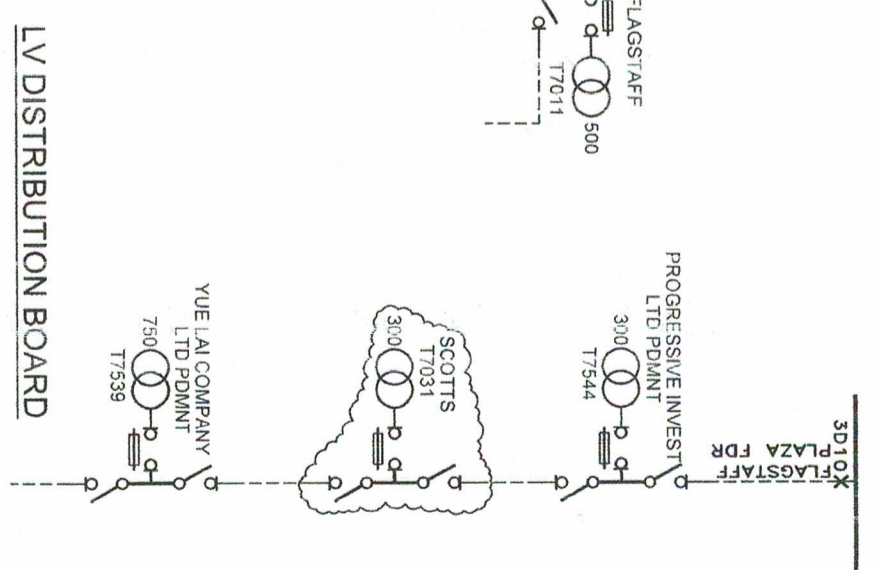
LV DISTRIBUTION BOARD



FINAL SINGLE LINE DIAGRAM (6.6kV)



FINAL SINGLE LINE DIAGRAM (11kV)



LEGEND - LV CIRCUIT

- LV POLE
- TERMINATION POINT
- LV LINK
- EXISTING SUBSTATION
- EXISTING O/H CONDUCTOR
- PROPOSED 1 x 240mm² 4C XLPE LV U/G CABLE
- TOTAL ROUTE LENGTH = 50m

DRAWN		PRIYA		16.01.26	
CHECKED		[Signature]		22.01.26	
TEAM LEADER DESIGN & PLANNING		[Signature]		22.01.26	
ENGINEER		[Signature]		22.01.26	
HEAD OF DEPARTMENT		[Signature]		22/11/26	
<b>ENERGY FIJI LIMITED</b>					
UPGRADING OF 6.6kV TO 11kV GRID					
SCOTT S/S T7031, ON FLAGSTAFF PLAZA FEEDER					
SUVA DISTRICT (SR06.15A-5)					
DRAWING NUMBER		A3 09 N48 456			
SCALE		NTS			
SHEET 2 OF 2					

No.	REVISION	DATE	BY	CHK	DEPT. ENG	HOD
0	ORIGINAL ISSUE FOR SR06.15A-5	16.01.26	PS	[Signature]	RK	[Signature]

