



Structure looking towards AB Face



<b>Tower ID</b>	WAI-VUD-A0024	
<b>Contract number</b>	HSG+9	
<b>Final No.</b>	67-4	
<b>Insulator Type/ Condition</b>	COMPOSITE	
<b>Type</b>	0	
<b>Body Extn - size</b>	0	
<b>Legs - size</b>	+1, +1, +/-0, +/-0	
<b>Earth Wire</b>	YES	
<b>Tower Area m<sup>2</sup></b>	148	
<b>Rust m<sup>2</sup></b>	9	6%
<b>Sweep m<sup>2</sup></b>	130	88%

RC steel identified	0
Earth plates fitted/ Compliant	#N/A
Climbing Deterrent Fitted	YES
Padlock Type	None
Environmental Rating	Low impact on neighbouring activities, easily secured from public.
Vehicle Access	No Vehicle access directly to towers and/ or requires maintenance prior to vehicle access.
Vegetation Control	Required Minor
Property Usage	Commercial
Foundation Connection Type	TSC
Bridge/ Culverts	YES
Cell Coverage	Strong

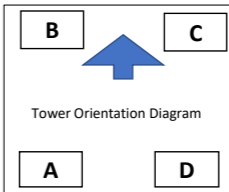
#### Comments

No cpi's in Fiji  
CTE on all 4 legs has failed  
Sharp drop throughout tower  
LSD - faded  
Access steep, and rutted, caution advised in the wet.  
500m walk access to tower only, with steep track, covered in jungle.  
River/Stream 400m off CD face  
Minor construction damage on structure.  
Situating in a quarry, access has to be reinstated  
Two River crossing, first one be cautious, as depth of river may vary, the other is steep entry and exit,  
rivers may rise without warning  
Some clearing around structure required

Step Bolts: 74  
Comment: Minor SURFACE RUST  
RC Bolts 2



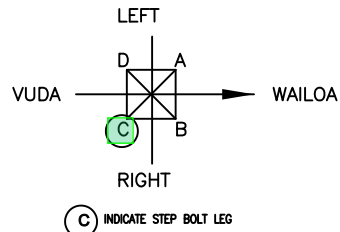
### LSD on AB Face



#N/A



DRG. SIZE	SCALE	FOLDER	
A3	N/A	CAP20477	
WID	0	SHEET	REVISION
		1	2
WAI-VUD-A0024			



STRUCTURE DESCRIPTION	
LINE:	WAI-VUD-A
STR No:	0024
BODY EXTN:	NIL
LEG A:	+1
LEG B:	+1
LEG C:	+/-0
LEG D:	+/-0
INSPECTED BY:	K.Fomo
COMPANY:	Lumen
DATE:	31/03/25

FOUNDATIONS	
GRILLAGE	Y
CONCRETE	
MASS CONC.	

NUMBER OF REPLACEMENT CRITERIA STEEL MEMBERS	
MINOR	
MAJOR(CRITICAL)	
MAJOR(OTHER)	

NUMBER OF REPLACEMENT CRITERIA BOLTS	

RC STEEL	
STEEL RATED AT CA21-30	
RC BOLTS	

PLATE	Y
SWIVEL	
TBT	
REPLACEMENT	
ORIGINAL	

EARTHPEAK

SINGLE E/PEAK

HANGER	
SWIVEL	Y
TBT	
REPLACEMENT	
ORIGINAL	

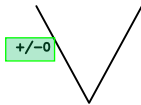
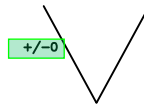
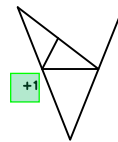
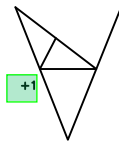
TOP

HANGER	
SWIVEL	Y
TBT	
REPLACEMENT	
ORIGINAL	

BOTTOM

HANGER	
SWIVEL	Y
TBT	
REPLACEMENT	
ORIGINAL	

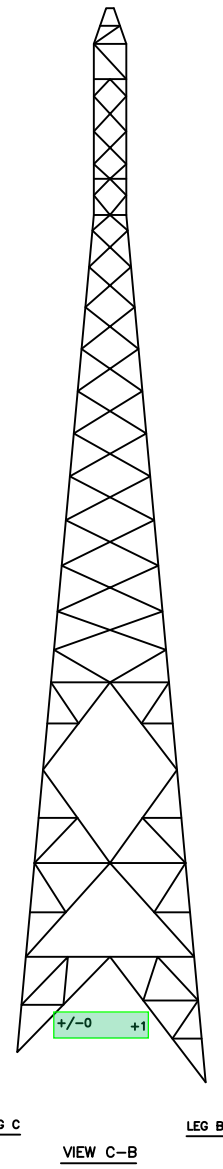
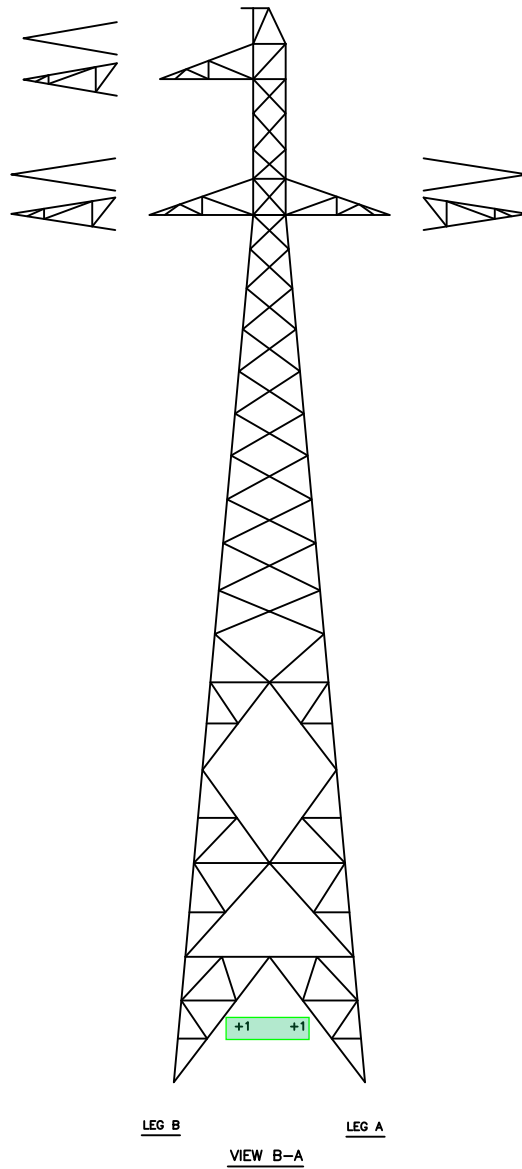
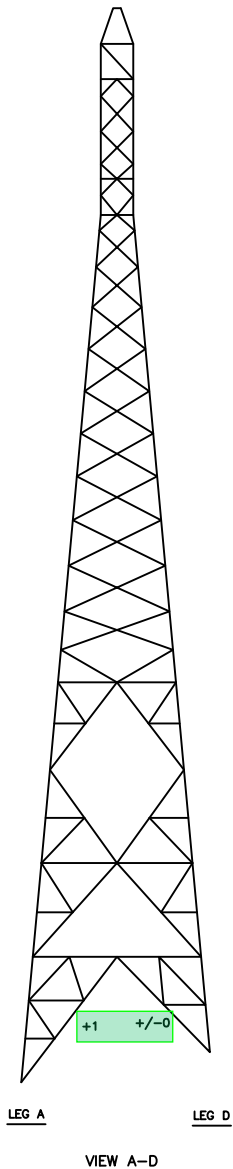
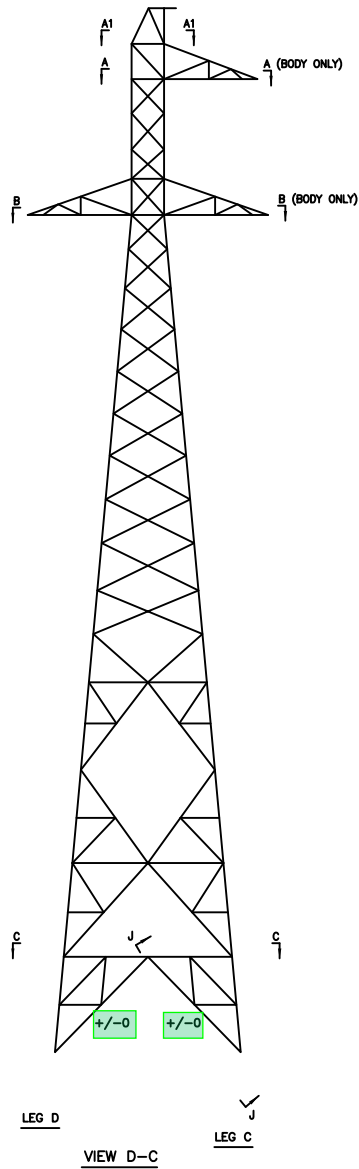
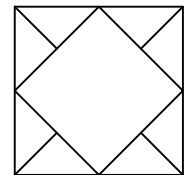
ATTACHMENT DETAILS



SECTION A1-A1

SECTION A-A

SECTION B-B



TOWER TYPE USED: HSG+9

AMENDMENT	BY	CHKD	DATE
-2 DRAWING REVISED	LDS		7.23
-3 DRAWING REVISED	LDS		4.25

AMENDMENT	BY	CHKD	DATE

DRAWN	M.L.	8.22
DESIGNED	LUMEN	8.22
CHECKED		
APPROVED	-	-
CAD FILE		

**LUMEN**  
Consulting  
210 Hazledene Rd.  
PO Box 25052  
Christchurch, New Zealand  
Tel +64 (03) 377 1546

ENERGY FIJI LTD  
VUDA - WAILOA LINE  
TOWER 67-4(24) OUTLINE

SCALE	N.T.S
ISS.	-3