

Structure looking towards AB Face



Device Position Description	WAI-VUD-A0021	
Tower	69-1	
Contract number	HSG+3	
Tower Type	0	
Body - size	0	
Body Extn - size	0	
Legs - size	+1, +2, +1, -1	
Earth Wire	YES	
Paint Type	0	
Tower Area m²	154	
MAD Tower Area m²	6	
Spot Blast m²		
Rust m²	12	8%
Sweep m²	127	83%

RC steel identified	0
Earth plates fitted/ Compliant	NO - 0
Climbing Deterrent Fitted	YES
Padlock Type	None
Environmental Rating	Low impact on neighbouring activities, easily secured from public.
Vehicle Access	Flat, dry paddock or sealed/ metalled track or road
Vegetation Control	Required Minor
Property Usage	Dairy Farm
Foundation Connection Type	TSC
Bridge/ Culverts	YES
Cell Coverage	Average
Insulator Type/ Condition	COMPOSITE
Corrosion Zone	C4
Wet Abrasive Blast issues Y/N	Yes

Comments

No access directly to structure, walk 300 metres

LSD - missing

cpi - no cpi in Fiji, added in to show phasing

Tower base needs clearing

Legs painted with CTE about 400mm above ground level

Minor construction damage to steel member main horizontal coming of B-Leg

Light ZCP through out tower

Dross noted throughout tower

Top chord coming off B-Leg minor construction damage, top cross arm.

Minor galv flaw on top cross arm floor steel, at end of cross arm, diagonal.

Step Bolts: 56

Comment: light surface rust on step bolts


RC Bolts

Comment:



Wailoa- Vuda

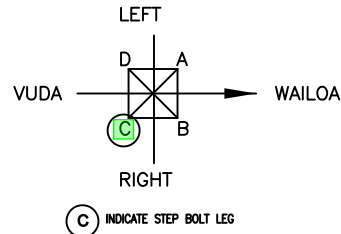


LANDOWNER DETAILS		INSPECTION TEAM LUMEN		Date	GPS COORDINATES (WGS84)			WAI-VUD A Paint Towers 19/20						
LandOwner	Unknown	Inspector-Tower	Karl Formo	9/02/2024	LATITUDE	17°42'38.16"S		DRG. SIZE	SCALE	FOLDER				
	TowerAccess		Unknown	Inspector-Ground		Karl Formo		LONGITUDE	177°30'9.36"E	A3	N/A	CAP18365		
	ContactName		Unknown	Draft Report		R. Glover		24/04/2023			WID	MR57-2021	SHEET	REVISION
	ContactPhone		Unknown	Report Review									1	2
Work Scope Assessment Report - Jun-2023								WAI-VUD-A0021						

COPYRIGHT 2007 LINETECH CONSULTING LIMITED
ALL RIGHTS RESERVED. UNAUTHORISED USE PROHIBITED.

©

A1



STRUCTURE DESCRIPTION	
LINE:	WAI-VUD-A
STR No.	0021
BODY EXTN:	NIL
LEG A:	+1
LEG B:	+2
LEG C:	+1
LEG D:	-1
INSPECTED BY:	K.Formo
COMPANY:	Lumen
DATE:	09/02/2024

FOUNDATIONS	
GRILLAGE	Y
CONCRETE	
MASS CONC.	

NUMBER OF REPLACEMENT CRITERIA STEEL MEMBERS	
MINOR	
MAJOR(CRITICAL)	
MAJOR(OTHER)	

NUMBER OF REPLACEMENT CRITERIA BOLTS	

RC STEEL	
STEEL RATED AT CA21-30	
RC BOLTS	

HANGER	
SWIVEL	
TBT	
REPLACEMENT	
ORIGINAL	PLT

EARTHPEAK

SINGLE E/PEAK

HANGER	
SWIVEL	Y
TBT	
REPLACEMENT	
ORIGINAL	

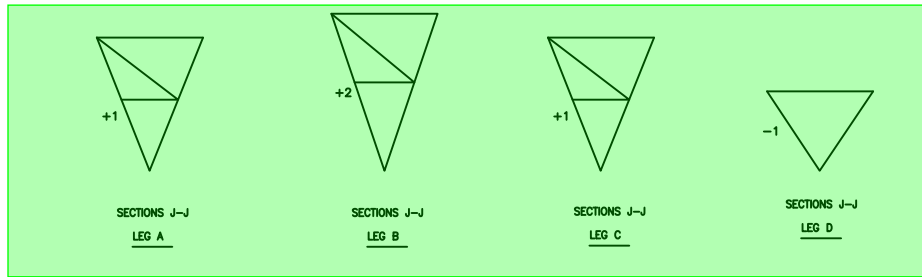
TOP

HANGER	
SWIVEL	Y
TBT	
REPLACEMENT	
ORIGINAL	

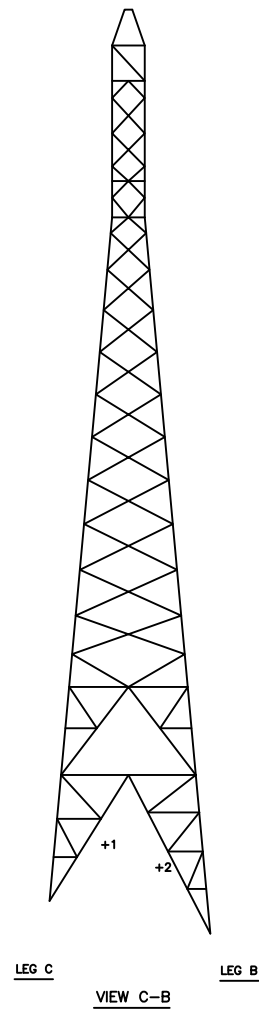
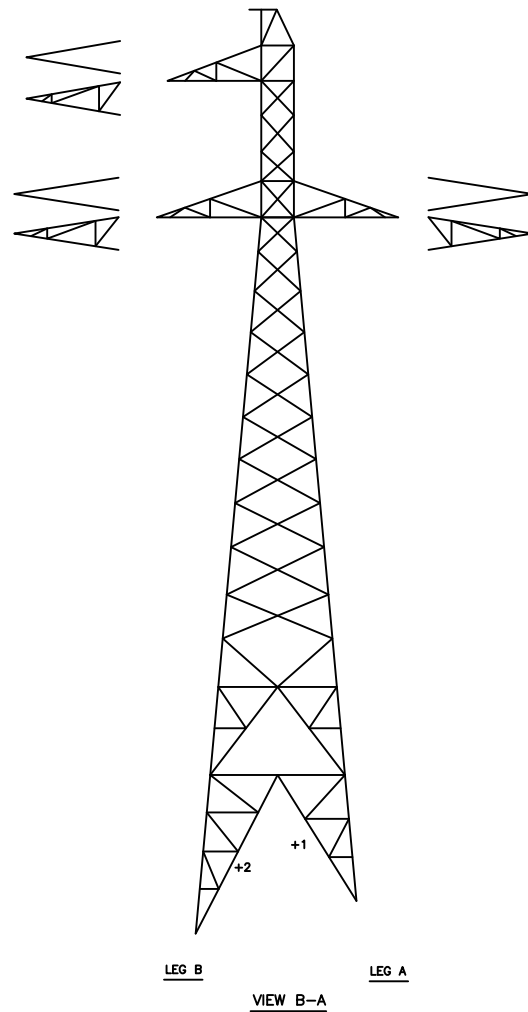
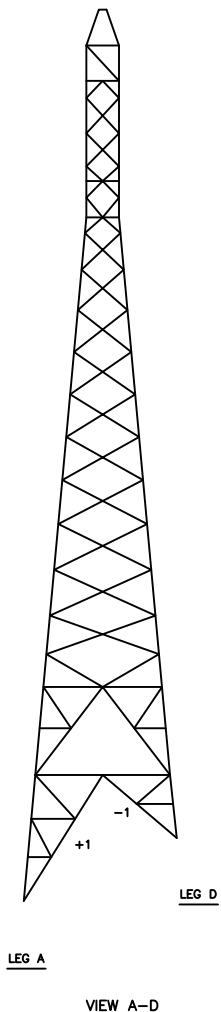
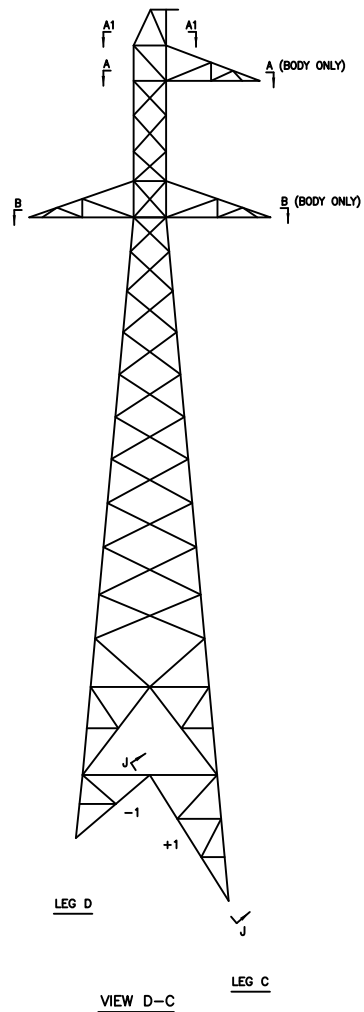
BOTTOM

HANGER	
SWIVEL	Y
TBT	
REPLACEMENT	
ORIGINAL	

ATTACHMENT DETAILS



SECTION A1-A1
SECTION A-A
SECTION B-B



TOWER TYPE USED: HSG+3

AMENDMENT	BY	CHKD	DATE	AMENDMENT	BY	CHKD	DATE
-2 EARTHPOEAK & CROSSARMS REVISED	ML		2.24				

DRAWN	M.L.	8.22
DESIGNED	LUMEN	8.22
CHECKED		
APPROVED	-	-
CAD FILE		

LUMEN
Consulting
210 Hazledene Rd.
PO Box 25052
Christchurch, New Zealand
Tel +64 (0)3 377 1546

ENERGY FIJI LTD
VUDA - WAILOA LINE
TOWER 69-1(21) OUTLINE

SCALE N.T.S
VUD-WAI 69-1
ISS. -2