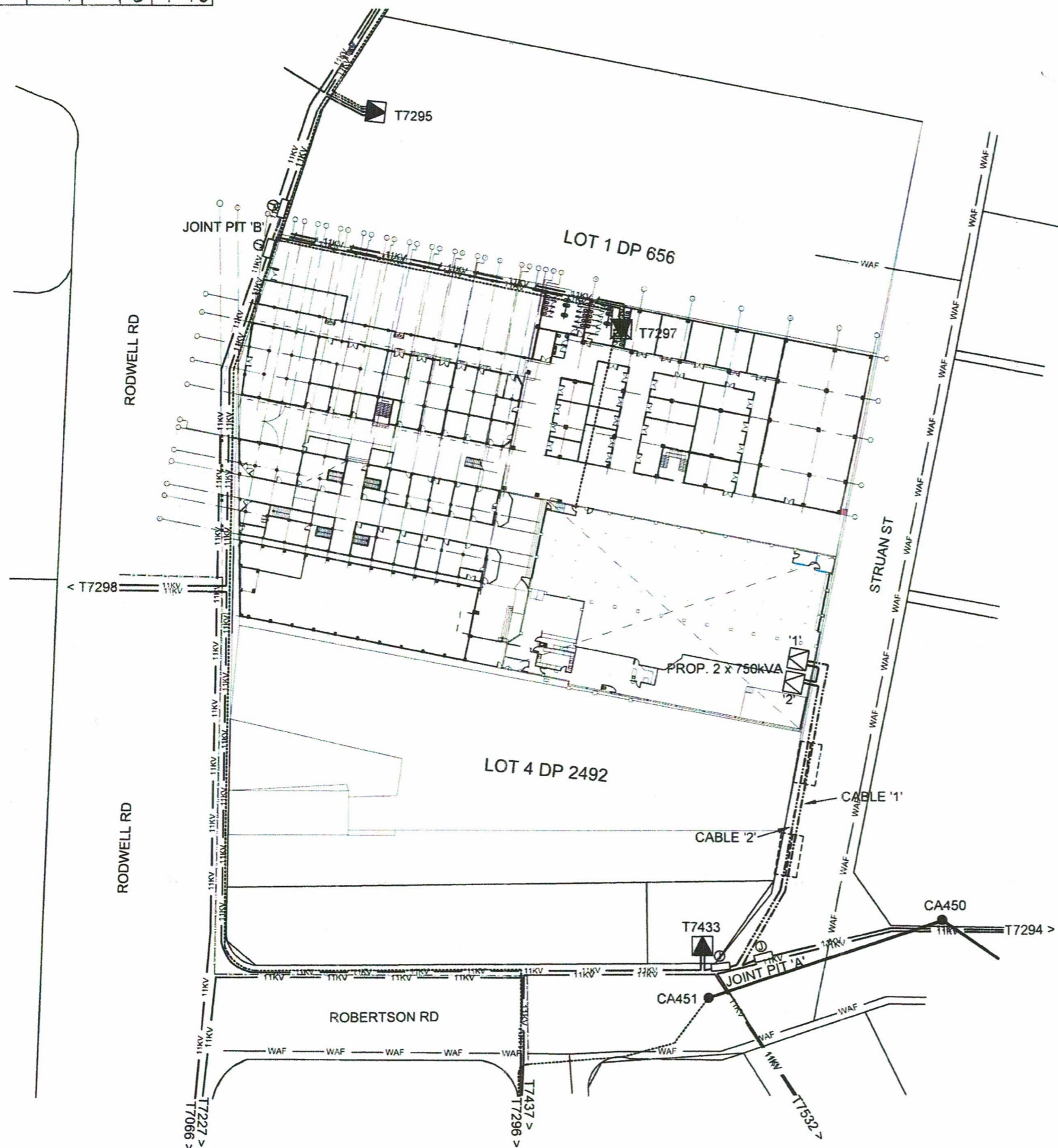


A3 09 N48 478



LEGEND

- LV POLE
- PROPOSED 11KV STRAIGHT THRU JOINT
- 150mm Ø HD PVC CONDUIT
- ⬢ EXISTING KIOSK TRANSFORMER TO BE REMOVED
- ⬢ EXISTING PADMOUNT TRANSFORMER
- ⬢ PROPOSED PADMOUNT TRANSFORMER
- EXISTING O/H CONDUCTOR
- EXISTING LV U/G CABLE
- 11KV EXISTING 11KV U/G CABLE TO BE REMOVED
- 11KV EXISTING 11KV U/G CABLE
- PROPOSED 11KV U/G CABLE
- WAF EXISTING WATER AUTHORITY PIPE LINE (INDICATIVE)

SCOPE OF WORK:

1. INSTALL 2 x 750kVA PADMOUNTED TRANSFORMER AT ALLOCATED SITE.
2. LAY 2 x 3C 240mm² AL XLPE 11kV CABLE FROM THE PROPOSED PADMOUNTED TRANSFORMER SITE TO PROPOSED JOINT PIT 'A' AT ROBERTSON RD. RL = 70m
3. CUT EXISTING 11kV CABLE (TERRY WALK FEEDER) BETWEEN ROBERTSON RD S/S T7294 & MH HOMEMAKER S/S T7433 AT JOINT PIT 'A' AND MAKE THE FOLLOWING JOINTS WITH THE NEW CABLE:
 - a. CABLE '1' - JOIN END OF THE NEW CABLE (FROM PADMOUNTED TRANSFORMER 1) WITH EXISTING CABLE FROM ROBERTSON RD S/S T7294.
 - b. CABLE '2' - JOIN END OF THE SECOND NEW CABLE (FROM PADMOUNTED TRANSFORMER 2) WITH EXISTING CABLE FROM MH HOMEMAKER S/S T7433.
4. INTER-CONNECT PADMOUNTED TRANSFORMERS 1 & 2 VIA 1 x 3C 240mm² XLPE 11kV CABLE RL = 5m
5. LABEL SWITCHGEAR RESPECTIVELY AS PER CONNECTION AS FOLLOWS:
 - AT ROBERTSON RD S/S T7294: CHANGE S/M LABEL "MH HOMEMAKER" TO "YATU LAU ARCADE PADMOUNT NO. 1".
 - AT MH HOMEMAKER S/S T7433: CHANGE S/M LABEL "ROBERTSON RD" TO "YATU LAU ARCADE PADMOUNT NO. 2".
 - AT YATU LAU ARCADE PADMOUNT NO. 1: LABEL S/M "ROBERTSON RD" & "YATU LAU ARCADE PADMOUNT NO. 2" AS PER CONNECTION.
 - AT YATU LAU ARCADE PADMOUNT NO. 2: LABEL S/M "MH HOMEMAKER" & "YATU LAU ARCADE PADMOUNT NO. 1" AS PER CONNECTION.
6. COMMISSION 2 x 750kVA PADMOUNT TRANSFORMERS ON TERRY WALK FEEDER.
7. EXPOSE & CUT EXISTING 11kV UG CABLE TO KASABIAS COMPLEX S/S T7297 AND MAKE STRAIGHT THRU JOINTS AT JOINT PIT 'B' FOR CONTINUITY OF SUPPLY BETWEEN KELTON INVESTMENT S/S T7295 AND MARKET S/S T7298. CHANGE SWITCHGEAR LABEL ACCORDINGLY.
8. DECOMMISSION EXISTING KASABIAS COMPLEX S/S T7297 AND REMOVE EQUIPMENTS
9. THE CLIENT, YATU LAU COMPANY LTD IS RESPONSIBLE FOR THE FOLLOWING WORKS:
 - TRENCHING & REINSTATEMENT WORKS FOR PROPOSED 11kV U/G CABLE FROM PROPOSED JOINT PIT 'A' TO PROPOSED 2 x 750kVA PADMOUNTED TRANSFORMER SITES.
 - CONSTRUCTION OF TRANSFORMER PLINTHS FOR THE 2 x 750kVA PADMOUNTED TRANSFORMERS IN COMPLIANCE TO EFL STANDARDS & DRAWINGS.
 - TRENCHING & REINSTATEMENT WORKS FOR HV & LV EARTHING FOR THE 2 x 750kVA PADMOUNTED TRANSFORMERS.
 - LOCATE ALL EXISTING BURIED SERVICES ALONG THE PROPOSED 11kV U/G CABLE TRENCHING ROUTES.
 - LIAISE DIRECTLY WITH FIJI ROADS AUTHORITY FOR APPROVALS AND PAYMENTS FOR TRENCHING AND REINSTATEMENT WORKS ALONG THE ROAD RESERVE AND ACROSS THE ROAD.
 - LAYING OF 150mm Ø PVC CONDUIT FOR PROPOSED 11kV U/G CABLE ACROSS ROADS OR DRIVEWAYS.
 - DIVERT CONSUMER SERVICE MAINS FROM OLD TRANSFORMER TO NEW PAD-MOUNTED TRANSFORMERS.

LOCALITY PLAN



No.	REVISION	DATE	BY	CHK	DEPT ENG	HOD
0	ORIGINAL ISSUE FOR G107.24	20.03.25	PS	Rsd	Blk	H



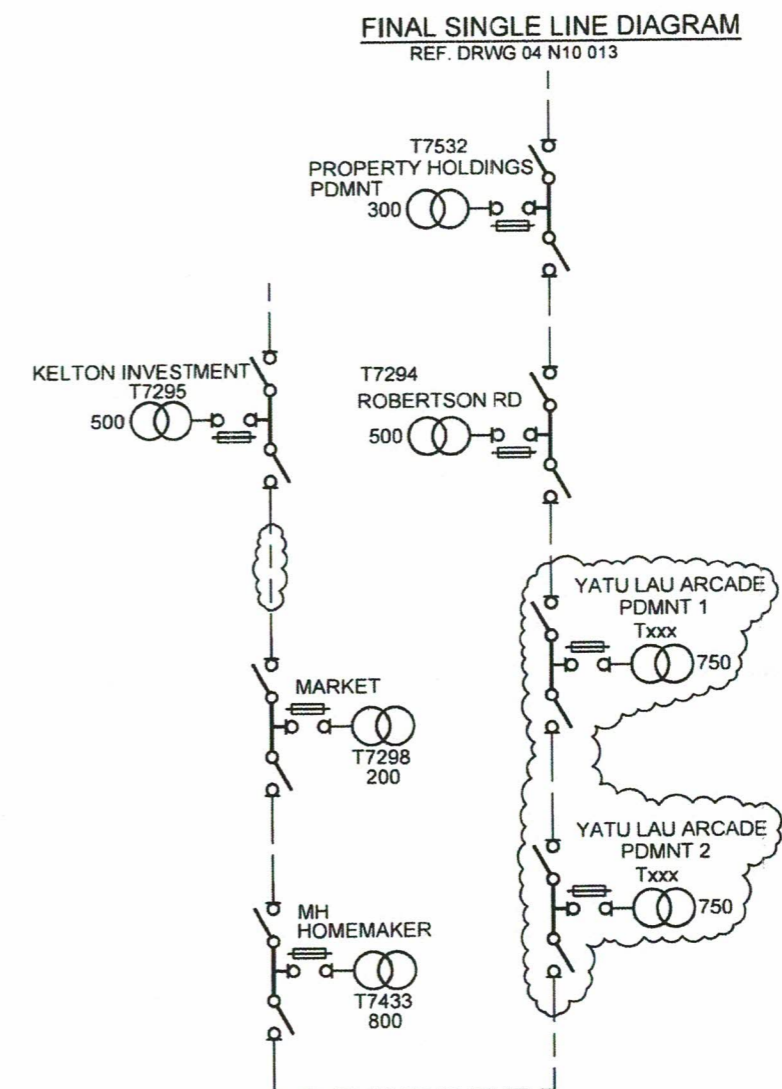
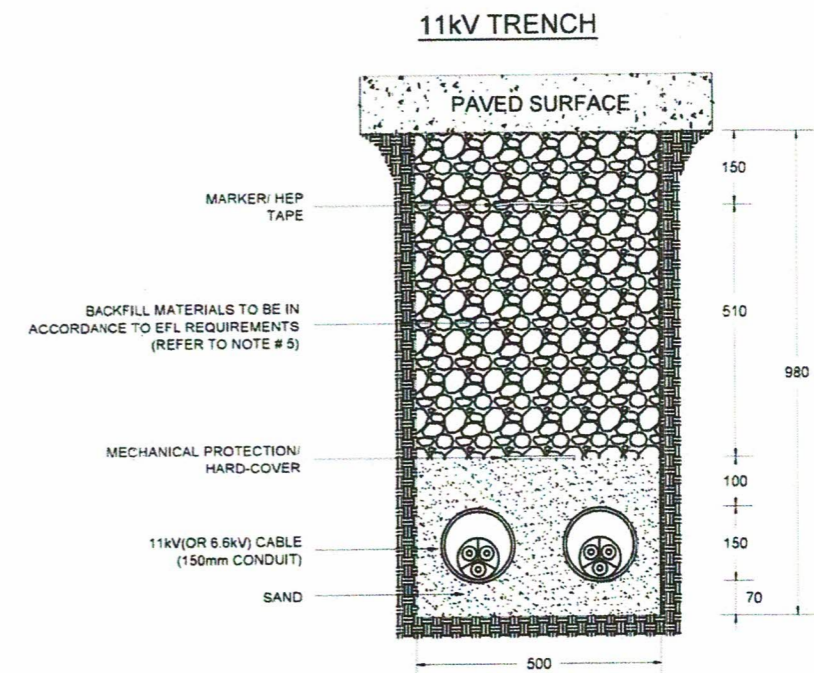
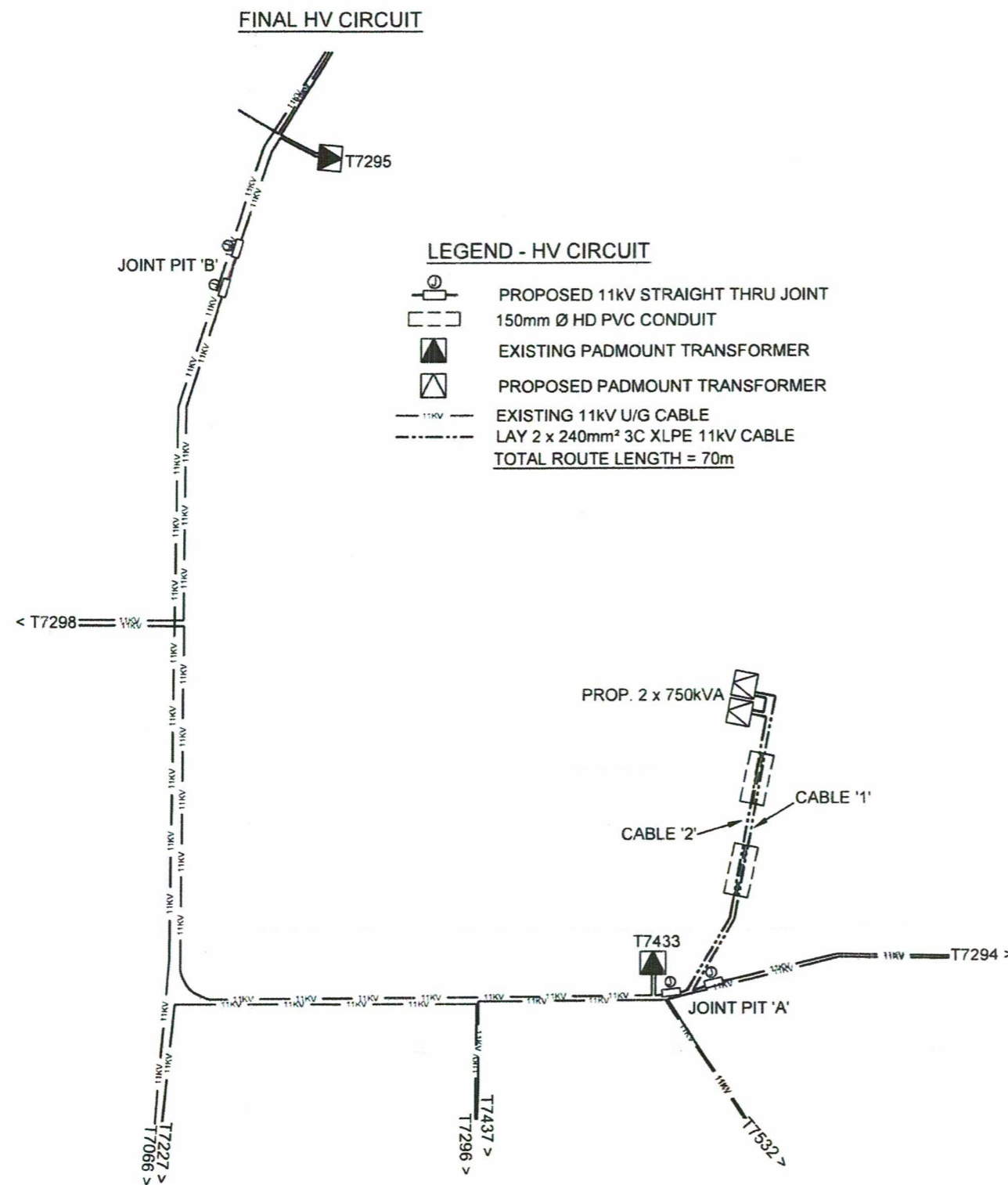
DRAWN	PRIYA	20.03.25
CHECKED	Prasad	26.03.25
GIS COORDINATOR		
TEAM LEADER DESIGN & PLANNING		27.03.25
ENGINEER	Blk	01.04.25
HEAD OF DEPARTMENT	H	7.4.25

ENERGY FIJI LIMITED

INCREASED DEMAND FOR YATU LAU ARCADE
AT LOT 1, DP 10103, STRUAN ST
SUVA DISTRICT (G107.24)

DRAWING NUMBER	
A3	09 N48 478
SCALE NTS	

SHEET 1 OF 2

[illegible]