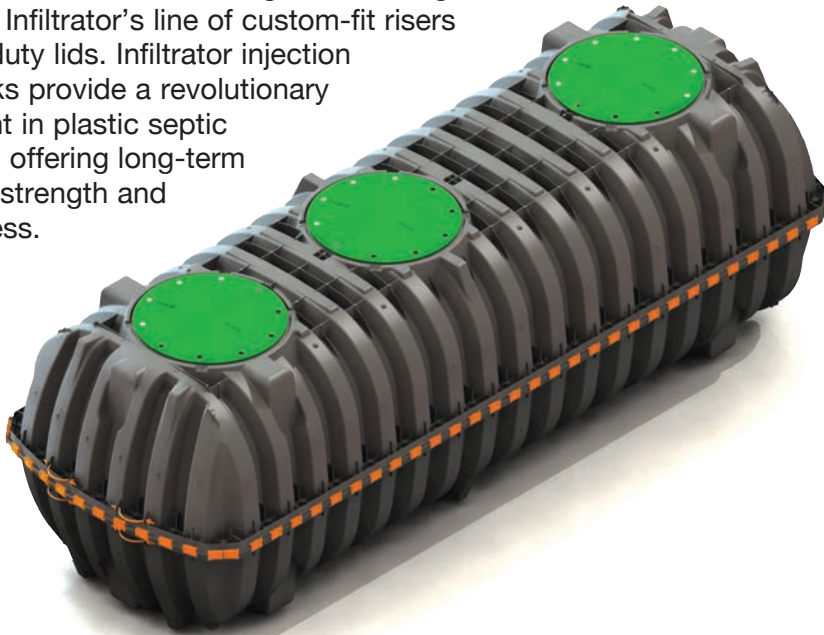




INFILTRATOR®
tanks

IM-1530

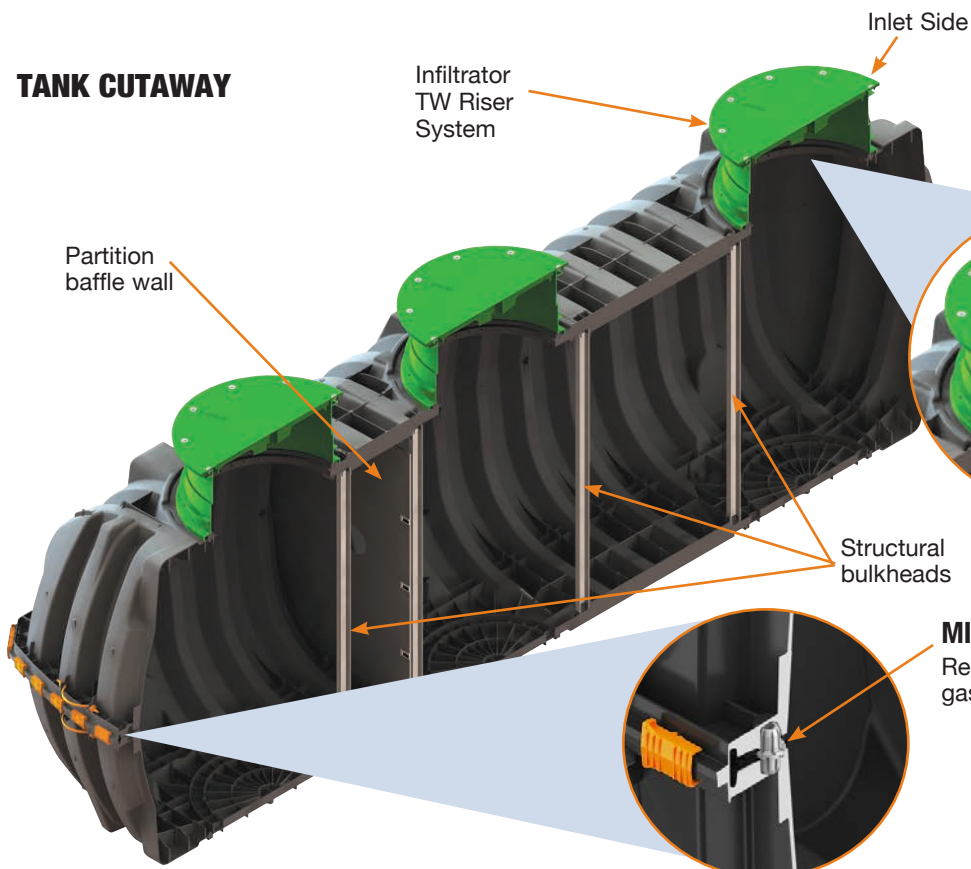
The Infiltrator IM-1530 is a lightweight strong and durable septic tank. This watertight tank design is offered with Infiltrator's line of custom-fit risers and heavy-duty lids. Infiltrator injection molded tanks provide a revolutionary improvement in plastic septic tank design, offering long-term exceptional strength and watertightness.



Features & Benefits

- Strong injection molded polypropylene construction
- Lightweight plastic construction and inboard lifting lugs allow for easy delivery and handling
- Integral heavy-duty green lids that interconnect with TW™ risers and pipe riser solutions
- Structurally reinforced access ports eliminate distortion during installation and pump-outs
- Reinforced structural ribbing and fiberglass bulkheads offer additional strength
- Can be installed with 6" to 48" of cover
- Can be pumped dry during pump-outs
- Suitable for use as a septic tank, pump tank, or rainwater (non-potable) tank
- No special water filling requirements are necessary
- The tank may be backfilled with suitable native soil. See installation instructions for guidance.

TANK CUTAWAY



HEAVY DUTY LID CUTAWAY

Reinforced 24" structural access port

MID-SEAM CUTAWAY

Reinforced water tight mid-seam gasketed connection



IM-1530 General Specifications and Illustrations

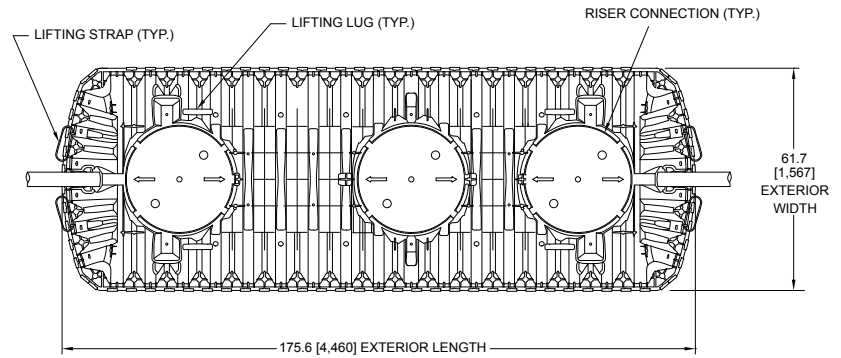
The IM-1530 is an injection molded two piece mid-seam plastic tank. The IM-1530 injection molded plastic design allows for a mid-seam joint that has precise dimensions for accepting an engineered EPDM gasket. Infiltrator's gasket design utilizes technology from the water industry to deliver proven means of maintaining a watertight seal.

The two-piece design is permanently fastened using a series of non-corrosive plastic alignment dowels and locking seam clips. The IM-1530 is assembled and sold through a network of certified Infiltrator distributors.

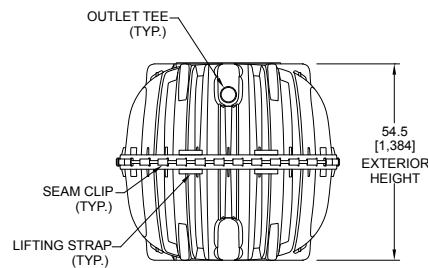
Must be backfilled and installed in accordance with Infiltrator Water Technologies, Infiltrator IM-Series Septic Tank General Installation Instructions and for shallow ground water conditions reference the Infiltrator IM-Series Tank Buoyancy Control Guidance.

Please visit www.infiltratorwater.com/images/pdf/ManualsGuides/TANK01.pdf for the latest information.

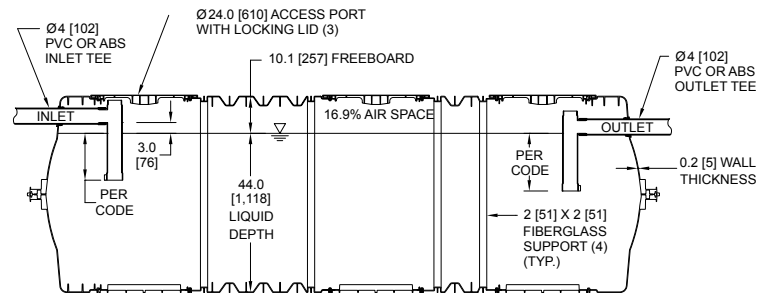
IM-1530	
Working Capacity	1537 gal (5818 L)
Total Capacity	1787 gal (6765 L)
Airspace	16.9%
Length	176" (4460 mm)
Width	62" (1567 mm)
Length-to-Width Ratio	2.8 to 1
Height	55" (1384 mm)
Liquid Level	44" (1118 mm)
Invert Drop	3" (76 mm)
Fiberglass Supports	4
Compartments	1 or 2
Maximum Burial Depth	48" (1219 mm)
Minimum Burial Depth	6" (152 mm)
Maximum Pipe Diameter	4" (100 mm)
Weight	501 lbs (228 kg)



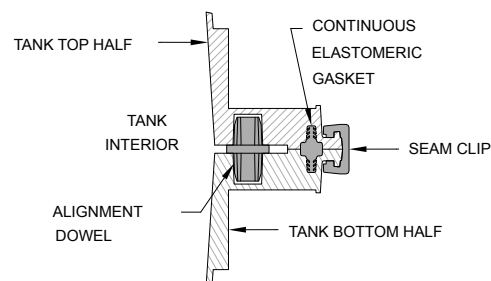
TOP VIEW



END VIEW



SIDE VIEW



MID-HEIGHT SEAM SECTION



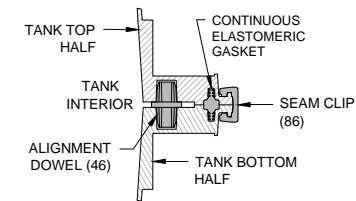
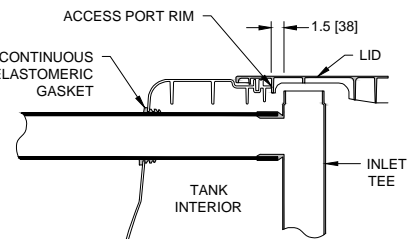
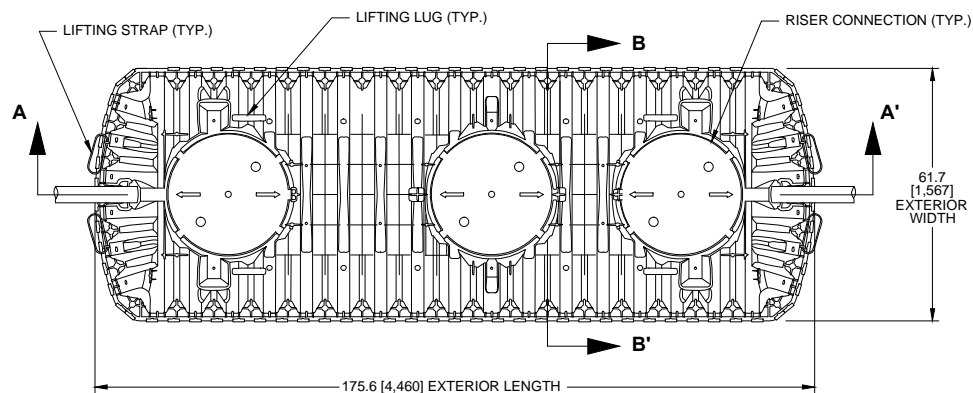
4 Business Park Road
P.O. Box 768
Old Saybrook, CT 06475
860-577-7000 • Fax 860-577-7001
1-800-221-4436
www.infiltratorwater.com

U.S. Patents: 4,759,661; 5,017,041; 5,156,488; 5,336,017; 5,401,116; 5,401,459; 5,511,903; 5,716,163; 5,588,778; 5,839,844 Canadian Patents: 1,329,959; 2,004,564 Other patents pending. Infiltrator, Equalizer, Quick4, and SideWinder are registered trademarks of Infiltrator Water Technologies. Infiltrator is a registered trademark in France. Infiltrator Water Technologies is a registered trademark in Mexico. Contour, MicroLeaching, PolyTuff, ChamberSpacer, MultiPort, PosiLock, QuickCut, QuickPlay, SnapLock and StraightLock are trademarks of Infiltrator Water Technologies. PolyLok is a trademark of PolyLok, Inc. TUF-TITE is a registered trademark of TUF-TITE, INC. Ultra-Rib is a trademark of IPEX Inc.

© 2014 Infiltrator Water Technologies, LLC. All rights reserved. Printed in U.S.A.

IM21 1116

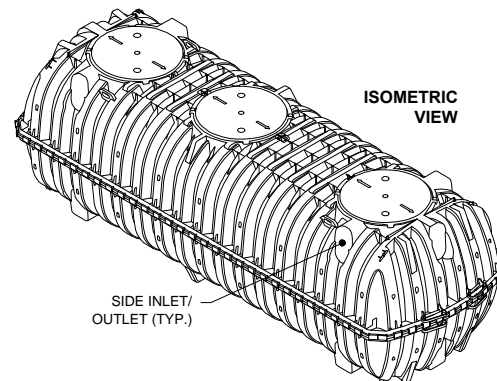
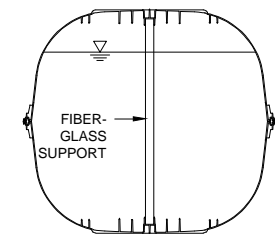
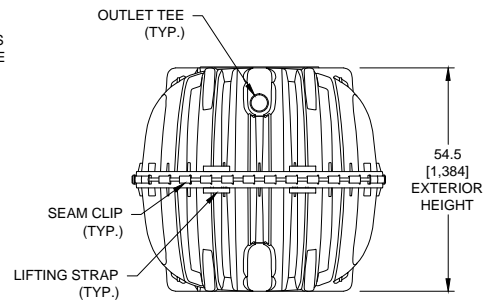
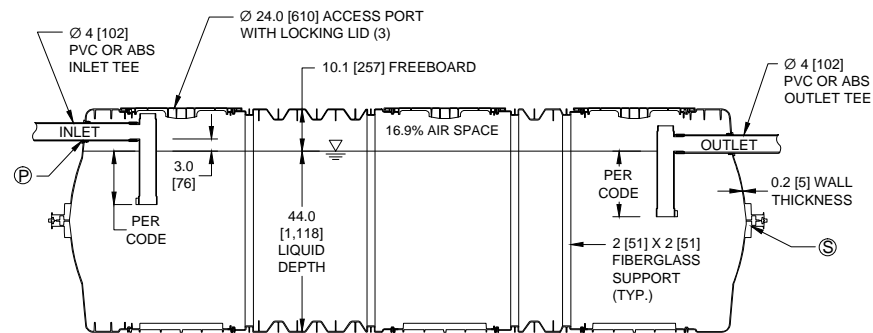
Contact Infiltrator Water Technologies' Technical Services Department for assistance at 1-800-221-4436



TANK EXTERIOR	
LENGTH	175.6 [4,460]
WIDTH	61.7 [1,567]
HEIGHT	54.5 [1,384]

LIQUID DEPTH	44.0 [1,118]
INVERT DROP	3.0 [76]
FREEBOARD	10.1 [257]

TOTAL CAPACITY	1,787 GAL [6,765 L]
WORKING VOLUME	1,537 GAL [5,818 L]



NOTES:

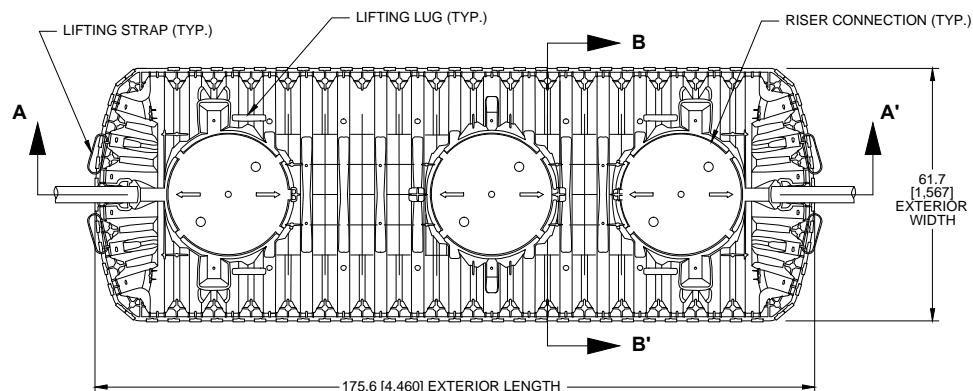
1. ALL DRAWING DIMENSIONS IN INCHES [MILLIMETERS] OR AS NOTED.
2. EXTERIOR OF ACCESS OPENING LID INCLUDES THE FOLLOWING WARNING IN ENGLISH, FRENCH & SPANISH: "DANGER DO NOT ENTER: POISON GASES."
3. TANK MARKINGS WILL INCLUDE: MANUFACTURER NAME, MODEL NUMBER, LIQUID CAPACITY, DATE OF MANUFACTURE, MAXIMUM BURIAL DEPTH, INLET, AND OUTLET.
4. MAXIMUM BURIAL DEPTH IS 48 in [1,219 mm].
5. MINIMUM BURIAL DEPTH IS 6 in [152 mm].
6. TANK IS FOR NON-TRAFFIC APPLICATIONS.
7. AIRSPACE IS 16.9%.
8. OUTLET TEE IS COMPATIBLE WITH AN EFFLUENT FILTER.
9. LENGTH TO WIDTH RATIO IS 2.8:1 (175.6-INCH LENGTH / 61.7-INCH WIDTH = 2.8).



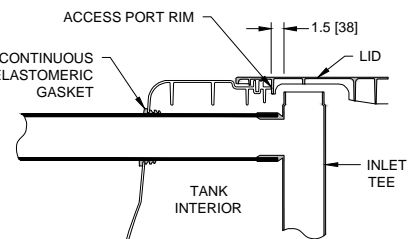
INFILTRATOR WATER TECHNOLOGIES
4 Business Park Rd. Old Saybrook, CT 06475
(800) 221-4436

IM-1530
1-Compartment Septic/Pump Tank Configuration

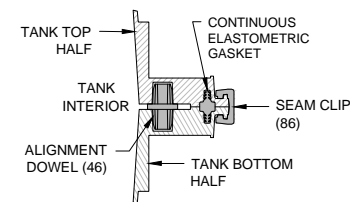
Drawn by: JLB	Date: 10/09/2013
Scale: NOT TO SCALE	Sheet: 1 of 1



TOP VIEW



Ⓟ PIPE PENETRATION SECTION DETAIL

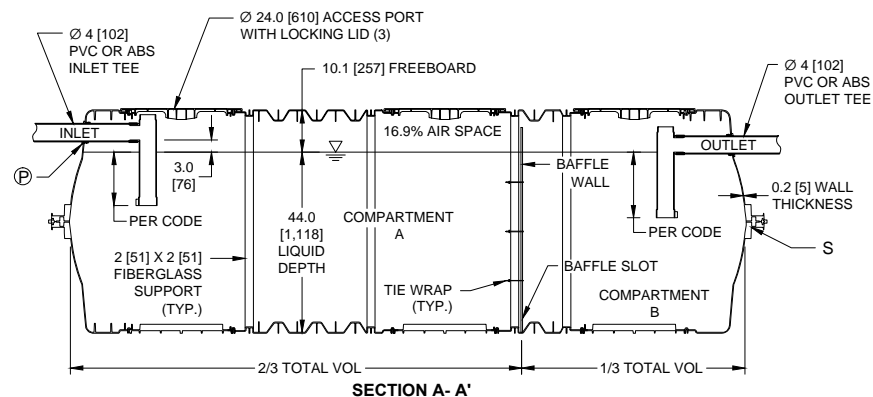


Ⓢ MID-HEIGHT SEAM SECTION DETAIL

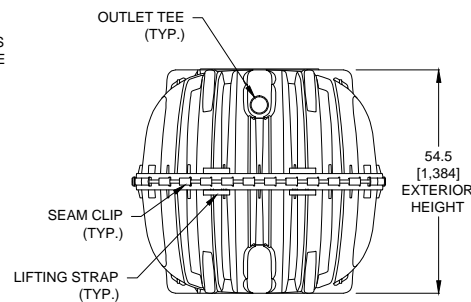
TANK EXTERIOR	
LENGTH	175.6 [4,460]
WIDTH	61.7 [1,567]
HEIGHT	54.5 [1,384]

LIQUID DEPTH	44.0 [1,118]
INVERT DROP	3.0 [76]
FREEBOARD	10.1 [257]

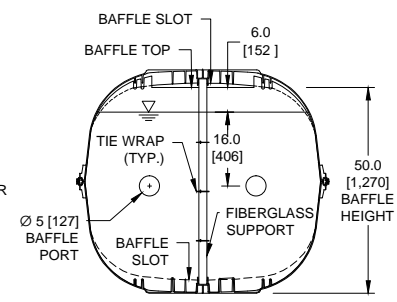
TOTAL CAPACITY	1,787 GAL [6,765 L]
WORKING VOLUME	1,537 GAL [5,818 L]
COMPARTMENT A VOL.	1,025 GAL [4,561 L]
COMPARTMENT B VOL.	512 GAL [1,938 L]



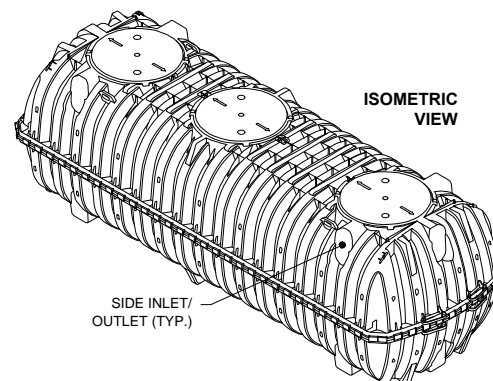
SECTION A-A'



END VIEW



SECTION B-B'
BAFFLE DETAIL



ISOMETRIC
VIEW

NOTES:

- ALL DRAWING DIMENSIONS IN INCHES [MILLIMETERS] OR AS NOTED.
- EXTERIOR OF ACCESS OPENING LID INCLUDES THE FOLLOWING WARNING IN ENGLISH, FRENCH & SPANISH: "DANGER DO NOT ENTER: POISON GASES."
- TANK MARKINGS WILL INCLUDE: MANUFACTURER NAME, MODEL NUMBER, LIQUID CAPACITY, DATE OF MANUFACTURE, MAXIMUM BURIAL DEPTH, INLET, AND OUTLET.
- MAXIMUM BURIAL DEPTH IS 48 in [1,219 mm].
- MINIMUM BURIAL DEPTH IS 6 in [152 mm].
- TANK IS FOR NON-TRAFFIC APPLICATIONS.
- AIRSPACE IS 16.9%.
- OUTLET TEE IS COMPATIBLE WITH AN EFFLUENT FILTER.
- LENGTH TO WIDTH RATIO IS 2.8:1 (175.6-INCH LENGTH / 61.7-INCH WIDTH = 2.8).
- FREE VENT AREA BETWEEN TOP OF BAFFLE WALL AND BOTTOM OF TOP BAFFLE SLOT IS 136.5 in².
- BAFFLE WALL THICKNESS IS 0.31 in [8 mm].



INFILTRATOR WATER TECHNOLOGIES
4 Business Park Rd. Old Saybrook, CT 06475
(800) 221-4436

IM-1530
2-Compartment Septic Tank Configuration

Drawn by: JLB	Date: 10/09/2013
Scale: NOT TO SCALE	Sheet: 1 of 1



INFILTRATOR
water technologies

Quick4™
CHAMBER SYSTEMS

The Quick4® Equalizer 36 Chamber

Quick4® Series



The Quick4® Equalizer 36 Chamber fits in a 24" wide trench and is ideal for curved or straight systems. It features the patent-pending Contour Swivel Connection™ which permits turns up to 10°, right or left. The MultiPort™ endcap allows multiple piping options and eliminates pipe fittings. The chamber's four-foot length provides optimal installation flexibility.

Chamber Benefits:

- Advanced contouring connections swivel up to 10°, right or left
- Latching mechanism allows for quick installation
- Compact nesting provides more trench length in an equivalent stack height
- Four-foot chambers are easy to handle and install
- The Quick4 Equalizer 36 Chamber supports wheel loads of 16,000 lbs/axle with only 12" of cover
- Certified by the International Association of Plumbing and Mechanical Officials (IAPMO)



MultiPort Endcap Benefits:

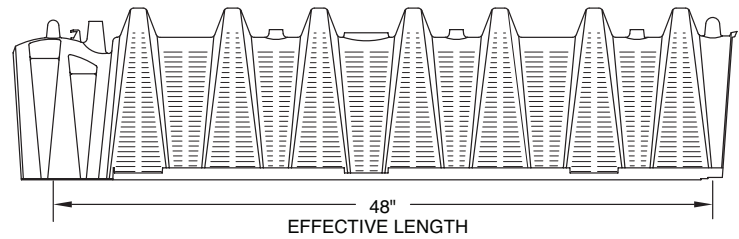
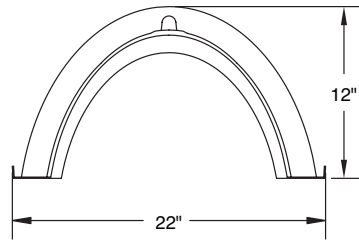
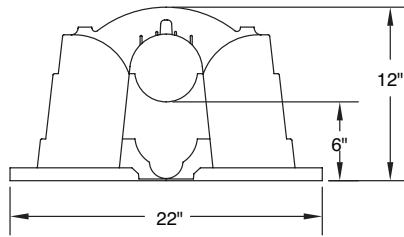
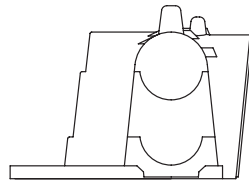
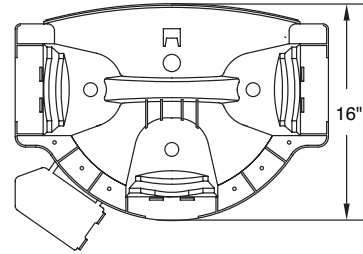
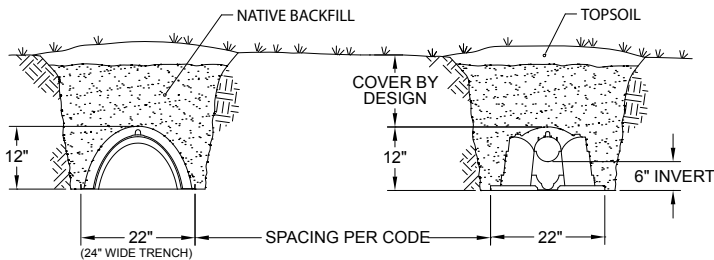
- Tear-out seals on inlet ports provide a tight fit to the pipe
- Six molded-in inlets/outlets allow for maximum piping flexibility
- Fits on either end of the Quick4 Equalizer 36 Chamber



Quick4® Series

Because installations are faster with Quick4 chambers, you save on heavy equipment operation and labor.

APPROVED in _____


MultiPort EndCap

FRONT VIEW

SIDE VIEW

TOP VIEW
Typical Trench View

Quick4® Equalizer 36 Chamber Specifications

Size	22"W x 53"L x 12"H (559 mm x 1346 mm x 305 mm)
Effective Length	48" (1219 mm)
Louver Height	10" (254 mm)
Storage Capacity	32 gal (121 L)
Invert Height	6" (152 mm)

INFILTRATOR WATER TECHNOLOGIES STANDARD LIMITED WARRANTY

(a) The structural integrity of each chamber, endcap and other accessory manufactured by Infiltrator ("Units"), when installed and operated in a leachfield of an onsite septic system in accordance with Infiltrator's instructions, is warranted to the original purchaser ("Holder") against defective materials and workmanship for one year from the date that the septic permit is issued for the septic system containing the Units; provided, however, that if a septic permit is not required by applicable law, the warranty period will begin upon the date that installation of the septic system commences. To exercise its warranty rights, Holder must notify Infiltrator in writing at its Corporate Headquarters in Old Saybrook, Connecticut within fifteen (15) days of the alleged defect. Infiltrator will supply replacement Units for Units determined by Infiltrator to be covered by this Limited Warranty. Infiltrator's liability specifically excludes the cost of removal and/or installation of the Units.

(b) THE LIMITED WARRANTY AND REMEDIES IN SUBPARAGRAPH (a) ARE EXCLUSIVE. THERE ARE NO OTHER WARRANTIES WITH RESPECT TO THE UNITS, INCLUDING NO IMPLIED WARRANTIES OF MERCHANTABILITY OR FITNESS FOR A PARTICULAR PURPOSE

(c) This Limited Warranty shall be void if any part of the chamber system is manufactured by anyone other than Infiltrator. The Limited Warranty does not extend to incidental, consequential, special or indirect damages. Infiltrator shall not be liable for penalties or liquidated damages, including loss of production and profits, labor and materials, overhead costs, or other losses or expenses incurred by the Holder or any third party. Specifically excluded from Limited Warranty coverage are damage to the Units due to ordinary wear and tear, alteration, accident, misuse, abuse or neglect of the Units; the Units being subjected to vehicle traffic or other conditions which are not permitted by the installation instructions; failure to maintain the minimum ground covers set forth in the installation instructions; the placement of improper materials into the system containing the Units; failure of the Units or the septic system due to improper siting or improper sizing, excessive water usage, improper grease disposal, or improper operation; or any other event not caused by Infiltrator. This Limited Warranty shall be void if the Holder fails to comply with all of the terms set forth in this Limited Warranty. Further, in no event shall Infiltrator be responsible for any loss or damage to the Holder, the Units, or any third party resulting from installation or shipment, or from any product liability claims of Holder or any third party. For this Limited Warranty to apply, the Units must be installed in accordance with all site conditions required by state and local codes; all other applicable laws; and Infiltrator's installation instructions.

(d) No representative of Infiltrator has the authority to change or extend this Limited Warranty. No warranty applies to any party other than the original Holder.

The above represents the Standard Limited Warranty offered by Infiltrator. A limited number of states and counties have different warranty requirements. Any purchaser of Units should contact Infiltrator's Corporate Headquarters in Old Saybrook, Connecticut, prior to such purchase, to obtain a copy of the applicable warranty, and should carefully read that warranty prior to the purchase of Units.

Infiltrator IM- and CM-Series Tank Riser Connection

Guidance Document for EZsnap Risers



Before You Begin

This document provides recommended procedures for the connection of EZsnap Riser products to Infiltrator Water Technologies (Infiltrator's) IM- and CM-Series tanks.

The intent of this document is to provide procedures for making the connection between the riser and tank. Risers must be installed according to state and/or local regulations, which supersede the guidelines in this document. If unsure of the requirements for a particular site, contact the local health department or permitting authority.

Note: The method of PVC and HDPE riser construction shown in this document is not allowed under Florida regulations.

Parts and Supplies

The parts and supplies necessary for installation of a riser system on Infiltrator IM- and CM-Series tanks must be purchased separately from the tank. All parts and supplies are commercially available. Contact Infiltrator or the riser manufacturer for assistance obtaining any of the following parts and supplies.

IM- and CM-Series Riser Products	
Item	Item Number
EZsnap Tank Pipe Adapter Ring	SNAPPAR-2400
EZsnap 24" x 2" Riser (Green)	SNAPIS-2402
EZsnap 24" x 6" Riser (Green)	SNAPIS-2406
EZSnap 24" x 12" Riser (Green)	SNAPIS-2412
EZsnap 24" Safety Lid System	SNAPSFT-2400
24" Riser Lid (Green)	IMLID-2400
Adhesive Sealant	ISI-1500 (or E6100 as equivalent)
Infiltrator Safety Star	SNAPSFT-2400



Risers nest together for efficient shipping.

Materials and Equipment Needed for EZsnap Riser Installation

- Rubber mallet
- Screw gun
- Ten #14 x 2" stainless steel tank-to-riser screws (supplied with EZsnap Riser)
- Ten #14 x 2" stainless steel lid screws with washers (supplied with IM and CM-Series tanks)

- 7/16" hex nut driver screw gun bit
- #3 square head Robertson driver bit, 6" (150 mm) length
- #2 Phillips driver bit, 6" (150 mm) length
- 3/8" hex nut driver screw gun bit
- Rags

Note: Install riser assembly prior to backfilling tank.

Note: The EZsnap Riser segment includes factory-installed gaskets on both ends of the riser segment, so the

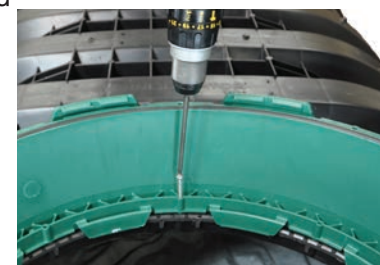
application of a sealant or mastic on the connection surface is not required. Proper care must be taken to ensure the gasket surface is clean and free of debris. It is recommended that all gaskets and connection surfaces be wiped clean. Each riser section is tapered to have a narrow end and a wide end. When shipped, the EZsnap Risers are stacked wide end down and nested together. When making riser connections, the narrow ends are designed to connect to the narrow end and the wide end is designed to connect to the wide end. It is a recommended best practice that the taller sections be installed at the deepest points of the installation.



Engage one set of tabs into proper position.



Use mallet to engage the rest of the tabs.



Screws required for riser to tank connection only.

Riser-to-Tank Connection

Insert the EZsnap Riser narrow end down into the tank opening. Rotate the riser until the riser connection tabs align with the tank indexing tabs on the tank opening. Screw pilot holes will be in alignment on the riser and tank when in proper position. On one side of the tank, insert the riser connection tabs into the tank indexing tabs and engage into the proper position. Using a rubber mallet pound downward on the top of the riser to engage the remaining tabs. It is helpful to move around the circumference of the tank opening while engaging tabs. **A screwed connection is only required for the tank-to-riser interface, created using the ten #14 x 2" stainless steel tank-to-riser screws supplied with the EZsnap Riser.** Tighten screws in a star pattern, alternately tightening screws on opposite sides of the EZsnap Riser.

Risers are available in 2", 6" and 12" height for desired finished height.



Riser-to-Riser Connection

The EZsnap Risers come in multiple heights to align with the desired finished grade. Each riser is tapered to have a large end and small end align with like-diameter ends of riser segments. Rotate until the tabs on the upper riser segment drop into alignment on the lower riser segment. With tabs in alignment, push directly down on the top rim of the upper riser segment until the connection tab engages into the lower riser segment. A rubber mallet may be necessary to engage the tabs by striking the top surface of the riser if manual pressure is not adequate.

Infiltrator Safety Star Installation

The Infiltrator Safety Star is designed to be mounted to the screw pilot holes at a narrow-end riser connection. One arm on the Safety Star folds down 15 degrees, allowing it to collapse and fit through a 24" (600 mm) opening.



1. Install the Safety Star at the EZsnap narrow riser-to-riser connection closest to the ground surface. A minimum of a 6" (150 mm) riser is required to accommodate the Safety Star and attach the lid properly.
2. Fasten the Safety Star in place using #14 x 2" stainless steel screws (supplied with the EZsnap Risers).



Infiltrator's five arm Safety Star system is equipped with a folding arm for easy installation.

Lid-to-Riser Connection

The EZsnap Lid will accommodate both the narrow and the wide end of the riser. To install, set the lid on top of the uppermost riser segment and rotate until the riser tabs recess into the receiving pockets on the lid. The lid will drop downward approximately 1/2" (13 mm) and stop rotating when seated properly. With the lid properly seated, the screw pilot holes are in alignment.



Set lid on uppermost riser segment and rotate to receiving pocket on riser.

Use the ten #14 x 2" stainless steel lid screws with washers provided with the tank to fasten the lid to the riser. There are nine hexagonal head stainless steel bolts and one #3 pan-head Robertson screw, which is used as a tamper-resistant fastener. Depending upon which end of a riser segment is being used for the lid connection, use the outer-diameter screw pilot holes on the lid for the larger-diameter end of the riser and the inner-diameter screw holes for the smaller-diameter end of the riser. Call-outs on the lids clearly define the proper screw pilot holes to use for the different bolt patterns. Adjust the screw gun settings to prevent stripping-out the pilot holes. Do not



Prior to backfilling, fasten the lid to the riser with screws provided.

over-tighten screws.

Materials and Equipment Needed for Riser Pipe Installation

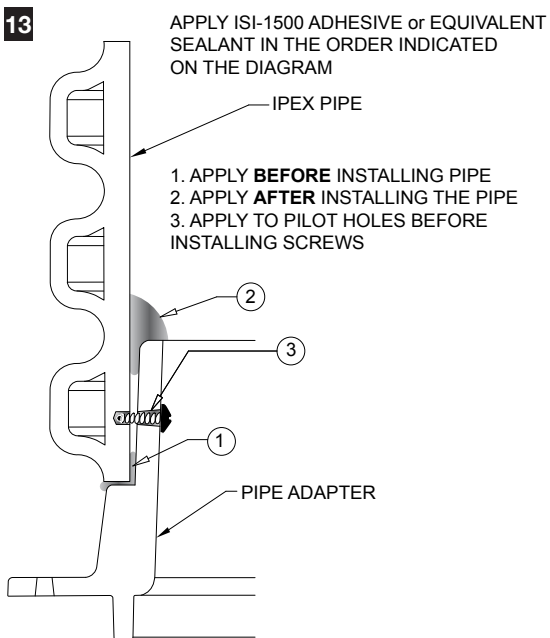
- Screw gun
- Caulk gun and ISI-1500 sealant or equivalent
- Marker or marking pencil
- Brush
- Rags
- Infiltrator Pipe Adapter Ring (SNAPPAR-2400)
- Adhesive-backed gasket (supplied with SNAPPAR-2400)
- Ten #14 x 2" stainless steel lid screws with washers (supplied with lid)
- Ten #14 x 2" stainless steel SNAPPAR-2400-to-tank screws (supplied with SNAPPAR-2400)
- Four #12 x 1/2" (for IPEX, Ultra-Rib™ PVC pipe) or #12 x 1/4" (for HDPE pipe) stainless steel screws (not provided)
- 7/16" hex nut driver screw gun bit
- #3 square head Robertson driver bit, 6" (150 mm) length
- #2 Phillips driver bit, 6" (150 mm) length
- 3/8" hex nut driver screw gun bit

24" (600-mm) IPEX, Ultra-Rib™ PVC Pipe

Note: Method not allowed in Florida

Note: 24" (600-mm) IPEX pipe must be installed using the Infiltrator Pipe Adapter Ring.

1. Install riser assembly prior to backfilling tank.
2. Cut IPEX pipe along an inner corrugation to allow lid to fit properly, taking care that the cut is smooth and even.



3. Apply two continuous 3/8" (10 mm) beads of adhesive sealant to the smaller of the two standing ribs closest to the screw pilot holes on the top surface of the tank opening. Add an extra dab of sealant in each screw hole. Sealant thickness must fill gap beneath Infiltrator Pipe Adapter Ring.

4. Align the Infiltrator Pipe Adapter Ring with the tank opening by lining up the arrows on the Infiltrator Pipe Adapter Ring with the arrow on the tank inlet or outlet. The ring will seat on the tank tightly when properly aligned. Center and press to create an even distribution of the sealant.

5. Fasten Infiltrator Pipe Adapter Ring to the tank opening using ten #14 x 2" stainless steel SNAPPAR-2400-to-tank screws. Tighten in a star pattern. Repeat the star pattern at least twice, without over-tightening screws.

6. Mark four evenly distributed locations on the inside of the Infiltrator Pipe Adapter Ring for pilot holes to accept screws. The pilot holes should be at a height half way up the interior flange of the Infiltrator Pipe Adapter Ring.

7. Drill four 1/8" (3.5-mm) pilot holes at marked locations on the Infiltrator Pipe Adapter Ring.

8. Apply one bead of adhesive sealant to the first taper on the Infiltrator Pipe Adapter Ring.

9. Place the IPEX pipe over the Infiltrator Pipe Adapter Ring until it is seated at the base of the flange.

10. Insert adhesive sealant into the four pre-drilled pilot holes.

11. Fasten IPEX pipe to Infiltrator Pipe Adapter Ring using four #12 x 1/2" stainless steel screws from the inside of pipe.

12. Tighten screws in a star pattern, tightening screws alternately on opposite sides of the Infiltrator Pipe Adapter Ring. Repeat the star pattern at least twice, without over-tightening screws.

13. Apply a generous bead of sealant into the groove at the top of the pipe adapter and then smear the sealant into the groove between the pipe and Infiltrator Pipe Adapter Ring.

14. Use the Infiltrator lid or equivalent product as a lid for the riser pipe. The lid will require the installation of the factory-supplied, adhesive-backed

gasket to the bottom side of the lid to ensure a snug fit. Set and center the lid onto the riser pipe. Pre-drill 1/8" (3.5-mm) pilot holes on the inner set of templated locations on the lid. Fasten using the ten factory-supplied #14 x 2" stainless steel lid screws with washers.

Note: When using the Infiltrator lid, apply the factory-supplied, adhesive-backed gasket to the bottom side of the lid to ensure a snug fit.

15. Backfill tank in accordance with Infiltrator's tank installation instructions.

16. Following tank backfilling, visually examine the riser-to-Infiltrator Pipe Adapter Ring connection for damage resulting from backfill placement. Repair or replace if damaged. Allow 24-hour sealant cure time before testing or putting into service.



24" (600-mm) HDPE Pipe

Note: Method not allowed in Florida

Note: The 24" (600-mm) HDPE pipe must be installed using the Infiltrator Pipe Adapter Ring.

1. Install riser assembly prior to backfilling tank.
2. Cut IPEX pipe along an inner corrugation to allow lid to fit properly, taking care that the cut is smooth and even.
3. Apply two continuous 3/8" (10 mm) beads of adhesive sealant to the smaller of the two standing ribs closest to the screw pilot holes on the top surface of the tank opening. Add an extra dab of sealant in each screw hole. Sealant thickness must fill gap beneath Infiltrator Pipe Adapter Ring.
4. Align the Infiltrator Pipe Adapter Ring with the tank opening by lining up the arrows on the Infiltrator Pipe Adapter Ring with the arrow on the tank inlet or outlet. The ring will seat on the tank tightly when properly aligned. Center and press to create an even distribution of the sealant.
5. Fasten Infiltrator Pipe Adapter Ring to the tank opening using ten #14 x 2" stainless steel SNAPPAR-2400-to-tank screws. Tighten in a star pattern. Repeat the star pattern at least twice, without over-tightening screws.
6. Mark four evenly distributed locations on inside of the the Infiltrator Pipe Adapter Ring for pilot holes to accept screws. The pilot holes should be at a height half way up the interior flange of the Infiltrator Pipe Adapter Ring.
7. Drill four 1/8" (3.5-mm) pilot holes at marked locations on the Infiltrator Pipe Adapter Ring.
8. Center the HDPE pipe over the Infiltrator Pipe Adapter Ring.
9. Fasten the HDPE pipe to the Infiltrator Pipe Adapter Ring using four #12 x 1 1/4" stainless steel screws from inside the pipe.

10. Tighten screws in a star pattern, tightening screws on opposite sides of the Infiltrator Pipe Adapter Ring. Repeat the star pattern at least twice, without over-tightening screws.

11. Apply adhesive sealant in the space between the pipe and Infiltrator Pipe Adapter Ring to seal the gap between the pipe and adapter ring.

12. Use the Infiltrator lid or equivalent product as a lid for the riser pipe. The lid will require the installation of the factory-supplied, adhesive-backed gasket to the bottom side of the lid to ensure a snug fit. Set and center the lid onto the riser pipe. Pre-drill 1/8" (3.5-mm) pilot holes on the inner set of templated locations on the lid. Fasten using the ten factory-supplied #14 x 2" stainless steel lid screws with washers.

Note: When using the Infiltrator lid, apply the factory-supplied, adhesive-backed gasket to the bottom side of the lid to ensure a snug fit.

13. Backfill tank in accordance with Infiltrator's tank installation instructions.

14. Following tank backfilling, visually examine the riser-to-Infiltrator Pipe Adapter Ring connection for damage resulting from backfill placement. Repair or replace if damaged. Allow 24-hour sealant cure time before testing or putting into service.

Backfilling Tank and Risers

Backfill tank and risers in lifts in accordance with Infiltrator IM- and CM-Series Septic Tank General Installation Instructions, supporting all sides of the risers as the backfill height increases.

Note: Always install and secure lids prior to backfill placement.

Disclaimer: These recommended procedures have been developed to identify best practices for achieving a watertight connection between the tank and riser under typical tank installation conditions. These procedures have been shown to result in a watertight connection between the riser assemblies identified in this document and the Infiltrator IM- and CM-Series tank. Infiltrator does not guarantee a watertight connection between tank and riser because achieving a watertight connection is dependent upon a combination of installer practices and procedures, and field conditions. Please contact Infiltrator's Technical Services Department at 800-221-4436 if difficulty is encountered during riser installation. Please contact the appropriate riser manufacturer for concerns associated with anything that does not involve the tank-to-riser connection.



INFILTRATOR
water technologies

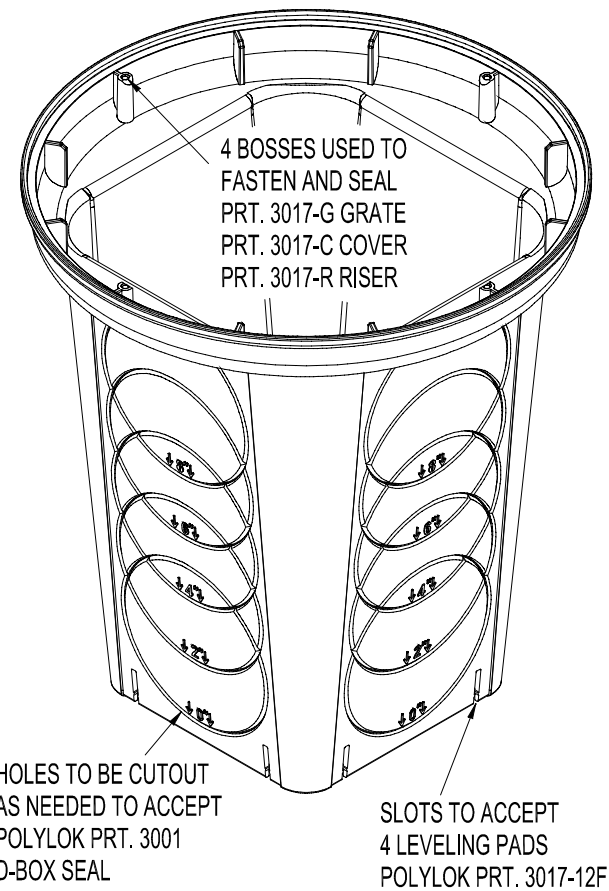
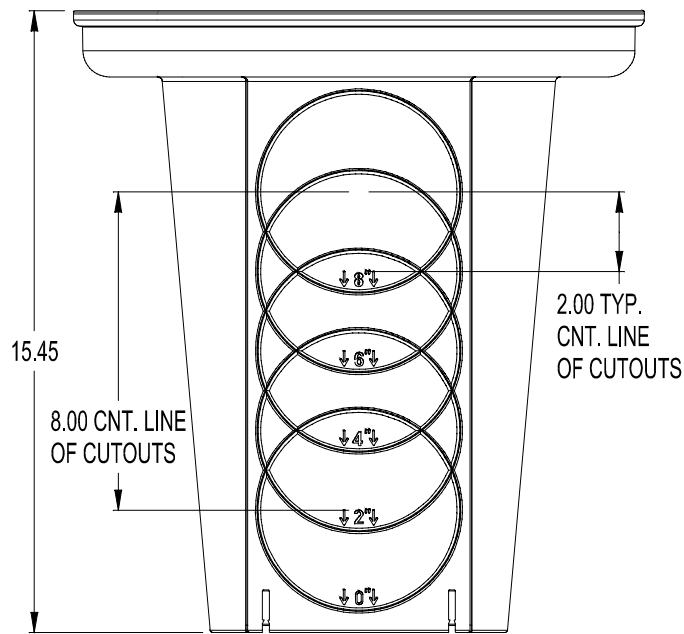
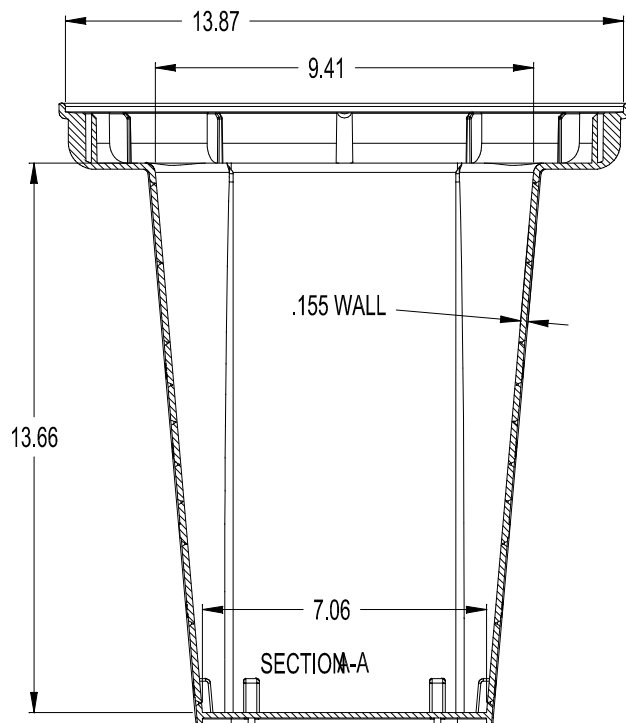
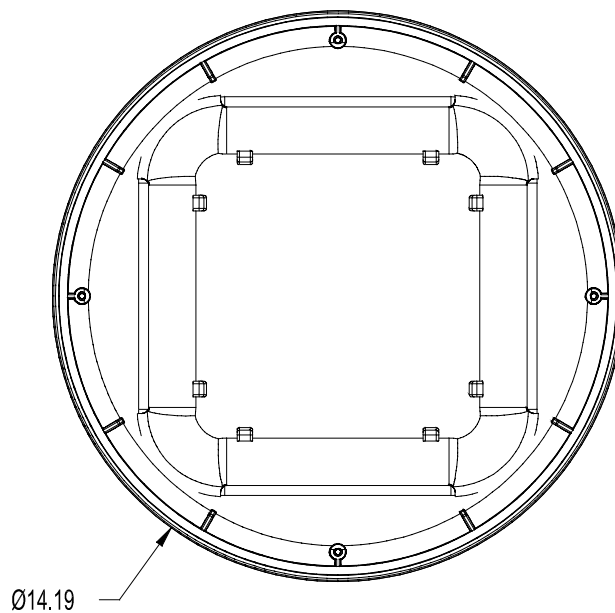
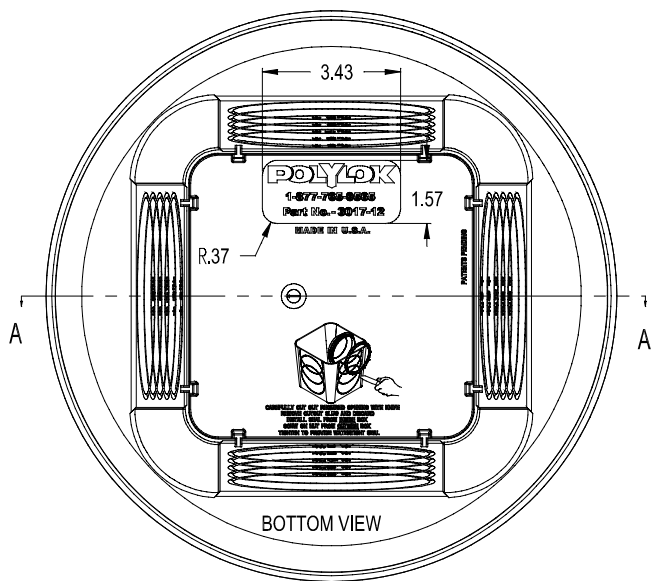
4 Business Park Road
P.O. Box 768
Old Saybrook, CT 06475
860-577-7000 • Fax 860-577-7001
(800) 221-4436
www.infiltratorwater.com
info@infiltratorwater.com

U.S. Patents: 8322948; 8337119; 8297880; 7914230; 7008138. Other patents pending. Infiltrator, Quick4 and EZflow are registered trademarks of Infiltrator Water Technologies. Infiltrator Water Technologies is a wholly-owned subsidiary of Advanced Drainage Systems Inc. (ADS).

© 2022 Infiltrator Water Technologies, LLC. Not responsible for any typographic errors. Printed in U.S.A.

TANK02 0422

Contact Infiltrator Water Technologies' Technical Services Department for assistance at 1-800-221-4436



POLYLOK 12" D-BOX
PART NO. - 3017
MATERIAL - POLYPROPYLENE
COLOR - BLACK
CAPACITY - 4 GALLONS