



MR 121/2025

**UPGRADING OF CABLE CROSSING
SUPPORT STRUCTURE INSTALLED AT
THE NATADOLA BRIDGE IN
SIGATOKA.**

**ENERGY FIJI
LIMITED**

1 BACKGROUND

Energy Fiji Limited (“EFL”) is a limited liability company that was established under the Companies Act (2015), Laws of Fiji. It is supervised by a Board of Directors comprising a Chairman, Deputy Chairman, the Chief Executive Officer of EFL and representatives from its shareholders.

EFL is responsible for generation, transmission and distribution of electricity in Viti Levu, Vanua Levu, Ovalau and Taveuni in Fiji. By the end of 2024, EFL had 223,539 customers. This includes residential, commercial and institutional customers.

EFL invites bids from registered reputable contractors for the upgrading of an existing cable crossing support structure that is installed on Natadola Bridge in Sigatoka. As part of a proposed grid extension, the existing cable crossing support structure needs to be upgraded to accommodate additional underground cables. This document outlines the technical requirements and extent of works to be carried out by the prospective contractor.

The location of the site is as given in this specifications.

During evaluation of tender bids, EFL may invite a bidder(s) for discussions, presentations and any necessary clarification before prior to award of tender.

The deadline to submit tender bids is **4pm on 16th April 2025**, Fiji Time.

2 INSTRUCTIONS FOR TENDERERS

2.1 Eligible Bidders

The Energy Fiji Limited (hereinafter referred to as "the Employer"), wishes to receive bids for the **Upgrading of Cable Crossing Support Structure Installed at the Natadola Bridge in Sigatoka**, as defined in this bidding documents (hereinafter referred to as "the Works").

This invitation is open to Bidders who have sound Financial Background, and have previous experience in carrying out such work.

Bidders shall provide such evidence of their continued eligibility satisfactory to EFL as EFL shall reasonably request, using the forms provided in the Schedules. No part of the work shall be sub-contracted.

Bidders shall not be under a declaration of ineligibility for corrupt or fraudulent practice.

2.2 Duration of Work

The successful bidder will be expected to complete the Works within 6 months from the date of issue of purchase order. If the project is not completed within the agreed time frame and the contractor is not able to provide valid justification for the delay, EFL may impose liquidated damages of \$100.00VIP per day for the 10% of Contract Value.

Within seven (7) days of acceptance of his tender, the selected bidder shall submit to the Employer, for approval a Program showing the order in which he proposes to carry out the works.

2.3 Eligible Materials, Equipment and Services

The materials, equipment, and services to be supplied under the Contract shall have their origin from reputable companies and countries and all expenditures made under the Contract will be limited to such materials, equipment, and services. Bidders shall be required to provide evidence of the origin of materials, equipment, and services in their bids.

For purposes of this Contract, "services" means the works and all project-related services including design services.

For purposes of this Contract, "origin" means the place where the materials and equipment are mined, grown, produced or manufactured, and from which the services are provided. Materials and equipment are produced when, through manufacturing, processing or substantial or major assembling of components, a commercial recognized product results that is substantially different in basic characteristics or in purpose or utility from its components.

The services to be provided under the Contract shall not infringe or violate any industrial property or intellectual property rights or claim of any third party.

2.4 One Bid per Bidder

Each Bidder shall submit only one bid. A Bidder who submits or participates in more than one bid will cause all those bids to be rejected.

2.5 Cost of Bidding

The Bidder shall bear all costs associated with the preparation and submission of its bid and EFL will in no case be responsible or liable for those costs.

2.6 Site Visit

Wednesday 26th March at 1:30pm at EFL's Natadola Substation in Natadola, Sigatoka.

Coordinates:-18.086289743290745, 177.3331741470649

Attendance shall be compulsory and recorded by EFL and signed by the interested bidders.

2.7 Contents of Bidding Documents

The Bidder is expected to examine carefully the contents of this Bidding document. Failure to comply with the requirements of bid submission will be at the Bidder's own risk. Bids which are not substantially responsive to the requirements of the bidding documents will be rejected.

2.8 Clarification of Bidding Documents

A prospective Bidder requiring any clarification of the bidding documents may contact our Supply Chain Office on phone (+679) 3224360 or (+679) 9992400 or email us on tenders@efl.com.fj.

EFL will respond to any request for clarification which it receives earlier than five (5) days prior to the deadline for submission of bids.

2.9 Amendment of Bidding Document

At any time prior to the deadline for submission of bids, EFL may, for any reason, whether at its own initiative or in response to a clarification requested by a prospective Bidder, modify the bidding documents by issuing an addenda.

2.10 Language of Bid

The bid, and all correspondence and documents related to the bid, exchanged between the Bidder and EFL shall be written in the English language.

2.11 Bid Prices

Unless specified otherwise, Bidders shall quote for the entire works on a "single responsibility" basis such that the total bid price covers all the Bidder's obligations mentioned in or to be reasonably inferred from the bidding documents in respect to the design, procurement, manufacture, testing and installation works.

Bidders shall give a breakdown of the prices in the manner and detail called for in the Schedules of this bidding document, or any issued addenda.

2.12 Bid Currencies

Prices shall be quoted in a single currency **FJD VIP** only.

2.13 Bid Validity

Bids shall remain valid for a period of **120 days** from the date of Deadline for Submission of Bids specified in Sub-Clause 2.14.

2.14 Format, Labelling and Signing of Bids

The bid shall contain no alterations, omissions or additions, except those to comply with instructions issued by EFL, or as necessary to correct errors made by the Bidder, in which case such corrections shall be initialed by the person or persons signing the bid.

2.15 Deadline for Submission of Bids

It is mandatory for Bidders to upload a copy of their bid in the TENDER LINK Electronic Tender Box no later than 4:00pm, on Wednesday 16th April, 2025. Please refer to Clause 11 for submission details.

EFL may, at its discretion, extend the deadline for submission of bids by issuing an addendum, in which case all rights and obligations of EFL and the Bidders previously subject to the original deadline will thereafter be subject to the deadlines extended.

2.16 Late Bids

Any bid received by EFL after the deadline for submission of bids prescribed above will be rejected.

2.17 Modification and Withdrawal of Bids

The Bidder may modify or withdraw its bid after bid submission, provided that written notice of the modification or withdrawal is received by EFL prior to the deadline for submission of bids. The modification or withdrawal of Bids notice shall also be lodged in the EFL electronic tender hosting website listed above. No bid may be modified by the Bidder after the deadline for submission of bids.

2.18 Rejection of One or All Bids

EFL reserves the right to accept or reject any bid, and to annul the bidding process and reject all bids, at any time prior to award of Contract, without thereby incurring any liability to the affected Bidder(s) or any obligation to inform the affected Bidder(s) of the grounds for the rejection.

2.19 Process to be Confidential

Information relating to the examination, clarification, evaluation and comparison of bids and recommendations for the award of a contract shall not be disclosed to Bidders or any other persons not officially concerned with such process.

Any effort by a Bidder to influence EFL's processing of bids or award decisions may result in the rejection of the Bidder's bid.

Lowest bid will not necessarily be accepted as successful bid.

2.20 Clarification of Bids

To assist in the examination, evaluation and comparison of bids, EFL may, at its discretion, ask any Bidder for clarification of its bid. The request for clarification and the response shall be in writing via email, but no change in the price or substance of the bid shall be sought, offered or permitted except as required to confirm the correction of arithmetic errors discovered by EFL in the evaluation of the bids.

2.21 Compliance with Specifications

The Bid shall be based on the details specified in this Technical Specification. It should be noted that unless departures from specifications are detailed in Schedules of the Technical Specification, the tender submission would be taken as conforming to the Specification in its entirety. The Bidder shall tender for the whole of the Works included in the Specification.

2.22 Signature of Bidder

A tender submitted by a Partnership shall be signed by one of the members of the Partnership and shall be accompanied by a certified authorization of all the partners authorizing the individual partner to sign on behalf of the Partnership. A tender submitted by a Corporation to the Contract shall be accompanied by a certified resolution of the Board of Directors authorizing the individual to sign on behalf of the Corporation.

2.23 Insurance

During the Works, and through to the Date of Completion, while any employees of the selected bidder are present at the Site, the selected bidder shall provide and maintain, through purchase or its standard insurance program, including provisions for self-retention, the insurance coverage listed below or its equivalent:

a) Accident Compensation Insurance

It is understood that under the Accident Compensation Act 2017 it is a no fault based system and as such these are the maximum amounts payable by the Accident Compensation Commission of Fiji (ACCF) for personal injuries and death arising out from Motor Vehicle Accidents are as follows:

- Permanent Partial incapacity FJ\$75,000;
- Permanent Total Incapacity FJ\$150,000;
- Any other cases (other than the above) FJ\$75,000;
- Deaths FJ\$75,000.

It would be prudent that the selected Bidder have in place safe working and driving mechanisms to equip their employees with survival skills to avoid Personal Injuries at work or Motor Vehicle Accidents for that matter.

b) Contractors All Risk (CAR)

CAR insurance, covering the selected Bidder and its employees, Equipment for all of the Bidder's operations hereunder, including all activities at the Site, including, but not limited to, bodily injury, property damage, premises operations, elevators, independent contractor, products, completed operations and

blanket contractual coverage with limits of not less than FJD\$500,000.00 combined single limit; and

c) Public Liability Insurance

Covering selected Bidder, its employees and Third Party for all of Bidder's operations hereunder, including all activities at the Work Site, including, but not limited to, bodily injury, property damage, premises operations, elevators, products, completed operations and blanket contractual coverage with limits of not less than FJD\$500,000.00 combined single limit.

d) Professional Indemnity ('PI') Cover

For the contracts with the various monetary amounts listed below signed with EFL, the selected Bidder is required to obtain their PI covers (as applicable to them for the contract amount) which are as follows:

- For EFL Contracts up to FJD\$100K – \$250,000 PI Cover is required;
- For EFL Contracts > FJD\$100K up to \$500K – \$1.5M PI Cover is required;
- For EFL Contracts > \$500K up to \$1M – \$2.5M PI Cover is required; and
- For any EFL Contracts above \$1M and up to \$2M - \$5M PI Cover is required.

Prior to commencing the Works, the selected bidder shall provide to EFL appropriate statements or certificates verifying that the above insurance covers are in place.

3 GENERAL CONDITIONS OF CONTRACT

The General Conditions of Contract shall be FIDIC Client/Consultant Model Services Agreement – Fifth Edition 2017 (White Book).

4 ADDITIONAL CLAUSES TO GENERAL CONDITIONS OF CONTRACT

EFL will provide during the contract stage.

5 SCOPE OF WORK.

The scope of work involves site assessment, design, fabrication and installation of a new cable crossing support structure on the Natadola Bridge in Sigatoka. Removal of the existing cable crossing support structure (including removal of the bridge railings if required) and Traffic Management to allow for related works to be carried out is also included in the Bidders scope of work.

The following standards are to be followed for the design, fabrication and installation of a new cable crossing support structure:

1. AS/NZS 3679.1 – Structural steel Hot-rolled bars and sections
2. AS/NZS 4680 -- Hot-dip galvanized (zinc) coatings on fabricated ferrous articles
3. AS/NZS 1214 -- Hot-dip galvanized coatings on threaded fasteners
4. AS/NZS 4792 -- Hot-dipped galvanized coating on ferrous hollow sections
5. AS/NZS 1554.1 – Structural steel welding - Welding of steel structures
6. AS 4291.1 – Mechanical properties of fasteners made of carbon steel and alloy steel Bolts, screws and studs
7. AS/NZS ISO 9001 - Quality management systems – Requirements

Bidders may include additional AS/NZS standards as appropriate in their design and fabrication of the cable crossing support structure.

5.1 Design of the Cable Crossing Support Structure

The existing cable crossing support structure comprise of multiple L-Brackets mounted to the bridge using four (4) Dyna Bolts per L-Bracket. There are a total of 45 L-Brackets installed evenly along the bridged that supports a 200mm nominal diameter steel pipe. The steel pipe is fastened to the L-Brackets via U-Brackets made of flat steel bars welded to the steel pipe and L-Bracket. An underground cable is installed inside an electrical conduit which is installed inside the steel pipe. Images of the existing cable crossing support structure is provided in Appendix 3.

This cable crossing support structure is to be upgraded to accommodate an additional 240mm² underground cable which has a weight of **6.4 Kg per meter**. Including existing, there will be then 2 x 240mm² cables inside the cable crossing support structure.

EFL proposes that the cable crossing support structure steel pipe be replaced with a new 450mm nominal diameter galvanized grade C steel pipe to accommodate an additional underground cable and all the existing L-Brackets be replaced with new ones. The new cable crossing support structure is to follow a similar design as the existing structure and in line with the following:

5.1.1 Design of the new L-Brackets:

The design of the L-Brackets must be such that it is able to hold the weight of the steel pipe having two (2) sets of 150mm diameter HD electrical conduits with 240mm² underground cables in each. The L-Brackets must be fabricated using suitably galvanized Parallel Flange Channel (PFC), the PFC being 150mm x 75mm x 6mm as a minimum specification.

Two sets of PFC are to be welded to form the L-Bracket and as a minimum the L-Brackets must have a 200mm x 200mm x 6mm backing plate as a minimum to allow mounting of the L-Bracket to the bridge structure.

Bidders can provide L-Bracket designs as required for structural integrity of the cable crossing support structure.

Bidders are required to take onsite measurements on the locations of the Dyna Bolts and ensure the new L-Brackets easily replace the existing brackets without the need for drilling additional holes in the bridge structure.

5.1.2 Galvanized Steel Pipe:

A 450mm nominal diameter galvanized grade C steel pipe is to be used for the cable crossing support structure. Bidders must provide details with calculations and drawings of how the steel pipe will be secured to the L-Bracket.

5.1.3 Corrosion Protection:

Bidders are to ensure that all materials used for fabrication of the cable crossing support structure are adequately protected from corrosion including welded joints and must provide details of the type and method of corrosion protection provided for each component. Bidders must guarantee a service life of not less than 25 years for the entire cable crossing support structure.

5.1.4 Onsite Assessment and Measurement for Design Purpose:

Bidders are required to make an onsite assessment of the following for design of the cable crossing support structure:

1. Length of the 450mm nominal diameter steel pipe required and angle of bend needed to allow the underground cables to transition from the cable crossing support structure into a 1 meter deep cable trench while being inside the steel pipe.
2. Length of the underground cables that will be inside the cable crossing support structure depending on Bidder's design proposal.
3. If removing the existing cable crossing support structure or installing the new cable crossing support structure will affect the existing Gabion Wall on both sides of the bridge and what will be done by the bidder to address this.
4. Dyna Bolts needing to be replaced.
5. Any other assessments or observations needed to ensure successful design, removal of existing cable crossing support structure and installation of the new cable crossing support structure.

The Bidder is required to ascertain for himself the Site Conditions, including limitations of space, geographical, climatic or other considerations. The Bidder shall satisfy himself of the suitability of the Sites for the carrying out the proposed works.

5.1.5 Design of the Cable Crossing Support Structure.

Bidders must provide a detailed design of the new cable crossing support structure with their bid submission. This is a mandatory requirement. The design of the cable crossing support structure must be rigid and self-bracing against all dead, wind, pull off and other applied load.

Bidders must also supply and installation HD electrical conduits inside the cable crossing support structure with appropriate draw wires inserted inside the conduits for pulling of the underground cables. Size of draw wire must be approved by EFL prior to installation.

The design must allow for easy pulling of the underground cables within the conduits placed inside the cable crossing support structure.

Upon award of the tender, the selected bidder will then have to get the drawings reviewed and endorsed

by a registered (FIE) structural engineer. The EFL's engineering team will also review the drawings and the bidder may have to make necessary amendments where required to ensure EFL is able to install the underground cables in the proposed cable crossing support structure.

A reference drawing of the cable crossing support structure is provided in Appendix 3.

5.2 Fabrication of the Cable Crossing Support Structure.

The selected Bidder must fabricate the cable crossing support structure in line with the approved drawings once approved by EFL and its nominated registered structural engineer.

As a sample, the first L-Bracket fabricated by the selected Bidder must be inspected and approved by EFL and its nominated structural engineer before the bidder can fabricate the remaining L-Brackets. This sample must be brought to EFL's Navutu Depot in Lautoka for EFL's inspection and approval.

The cable crossing support structure must be fabricated in line with the approved drawings and the requirements outlined in this specification. Any deviation from the specification must be approved by EFL in advance before fabrication works take place.

5.3 Installation of the Cable Crossing Support Structure.

EFL will decommission and remove the existing underground cable that is installed in the existing cable crossing support structure. The bidder is then required to commence work on removal of this structure.

Bidders are required to submit a methodology of how they propose to remove the existing cable crossing support structure and to install the new cable crossing support structure with their bid submission. This methodology must also include the Traffic Management Plan for controlling traffic for the proposed duration of works in accordance with the Fiji Roads Authority's (FRA) requirement.

Bidders must also state if the railings of the bridge need to be removed for the proposed works. This will require approval from the FRA and the bidder must be prepared to meet FRA's requirements as such. Bidder will need to bear all cost for removal and reinstatement of the bridge railings as per FRA's requirement. This must be included in the bid offer.

The selected bidder will be required to transport the existing cable crossing support structure components to EFL's Navutu Depot in Lautoka.

Replacement of Dyna Bolts where deemed necessary by the Bidders must be indicated in the either the design drawings or methodology,

The Bidder must adhere to the following during the installation phase:

1. Advise EFL four weeks in advance prior to mobilizing to the site to allow EFL to decommission the existing underground cable prior to commencing works.
2. Ensure its staff are well equipped with the appropriate PPE.
3. The FRA approved Traffic Management Plans are followed.
4. All works are done safely and to the best of workmanship.
5. Site to be reinstated and tidied up after installation works have been completed.

The selected Bidder will be required to closely coordinate the proposed works with the EFL team.

A registered (FIE) structural Engineer's certificate must be provided within a week from the date the new cable crossing support structure has been installed.

EFL will then install its cable and will provide the selected Bidder with a certificate of completion of the proposed works after the expiry of the defects liability period.

5.4 Quality of Materials and Workmanship.

All materials used under this contract shall be new and of the quality and class most suitable for working under the conditions specified and shall withstand the variations of temperature, atmospheric conditions arising under working conditions without distortion or deterioration or the setting up of undue stresses in any part and also without affecting the strength and suitability of the various parts of the work which they have to perform.

Materials in all trades shall be new and the best of their kinds specified and necessary complying with relevant standards (Fiji, Australia or New Zealand) where applicable and subject to approval or rejection by the EFL.

The selected Bidder shall at all times ensure that adequate protection is provided to finished work and materials to be used in the construction of the work. Where necessary, make good any damage to property. All workmen, both skilled and unskilled shall be provided with proper plant, equipment and materials necessary for the expeditious completion of the work.

All work shall be carried out and completed in a neat and professional manner to the approval of the Employer's Representative.

5.5 Environmental Management.

The selected Bidder shall comply with the Environmental Management Laws of Fiji. Prior to the commencement of works an Environmental Management and Monitoring Plan (EMMP) shall be prepared by the Bidder and submitted to EFL for review. The plan shall be finalized to incorporate any changes required by the Bidder and complied with for the duration of the Contract.

All works are to be programmed, constructed and maintained to minimize the impacts on the surrounding environment.

Before beginning works on any site, the selected Bidder shall ensure that the environmental safety measures are constructed and operational. Further, the selected Bidder shall have in place all contingency plans and emergency plans and procedures before starting work.

All incidents with possible significant environmental affects or outcomes shall be reported immediately to the EFL's representative.

The Following Conditions should be strictly followed:

- Earth works and construction works must cease during periods of heavy rain and adverse weather conditions.
- Works hours must be confine to daylight hours only from 7am-6pm. Works is prohibited at night. (Unless written approval has been obtained from EFL).
- Refueling of vehicles and machineries must be undertaken 100m away from any waterways, in a bund area to contain potential spills. Proper spill kits and spill procedures must be in place for any fuel or chemical spill.
- Contractor is strictly prohibited from washing his vehicles and machines in the waterways. If machinery is working adjacent or in the water, the machinery to be free from oil and fuel leaks.

On completion, the selected Bidder must remove all surplus materials from site and leave site in a clean and tidy condition.

5.6 Inspection and Testing.

The EFL's representative shall have the right to inspect the works and to confirm conformity to the contract specifications. Should any inspected works fail to conform to the specifications, the EFL may reject them and the selected Bidder shall make all alterations necessary to meet the specification requirements.

Nothing in this clause shall in any way release the selected Bidder from any other obligations under this contract.

6 SCHEDULE OF PRICES.

The Contract Price is comprehensive in that, in consideration of the selected Bidder meeting all obligations, conditions and liabilities under the Contract, including the Bidder's allowance for the cost of supply of all labour, materials, plant, supervision required to complete the upgrading of the cable crossing support structure Works.

Descriptions of various items contained in the Schedule of Prices are intended to be a complete definition of the scope of the Contract Works, for which reference shall be made to the Specification, Drawings, Basis of Payments and other Contract Documents. The items descriptions on the Schedule of Prices shall be used only for the purpose of calculating progress payments.

Bidder's must fill and submit the price schedule in Appendix 1.

7 DEFECTS LIABILITY PERIOD.

Bidders shall warrant the cable crossing support structure to be free from defects in workmanship and materials used in fabrication and installation. A defects liability period of twelve (12) months is applicable on the fabrication and installation of the cable crossing support structure once installed at the site and approved by EFL in writing.

8 PAYMENT AND RETENTION.

There will be no advanced payments made to the selected Bidder. Payment will be made after the cable crossing support structure has been installed at the site, a Structural Engineer's Certificate provided and the cable crossing support structure has been inspected and approved by EFL.

A 15% retention of payment amount is applicable and will be paid to the Bidder upon rectification of all defects and after the expiry of the defects liability period.

9 OCCUPATION HEALTH AND SAFETY.

The Contractor's responsibilities under this clause shall include but not be limited to its obligations under the Health and Safety at Work Act 1996 (HSWA).

It is the selected Bidder's responsibility to ensure that all personnel and visitors to the site are familiar with the requirements of the Health and Safety Plan. The Contractor shall provide, maintain and enforce the appropriate use of compliant personal protective clothing and other safety equipment, for all personnel and visitors.

10 APPENDIX

10.1 Appendix 1 – Price Schedule and Wok Duration.

ITEM	DESCRIPTION	TOTAL PRICE	DURATION
		\$FJD VIP	Weeks
1.0	Design, drawings and Structural Engineers approvals of the cable crossing support structure.		
2.0	Fabrication of new cable crossing support structure, removal of existing cable crossing structure and installation of new cable crossing support structure (including any works associated with reinstating existing Gabion Wall as required and site to original status to the satisfaction of FRA and all other works mentioned in this tender specification such as removal of bridge railings, etc.).		
GRAND TOTAL			

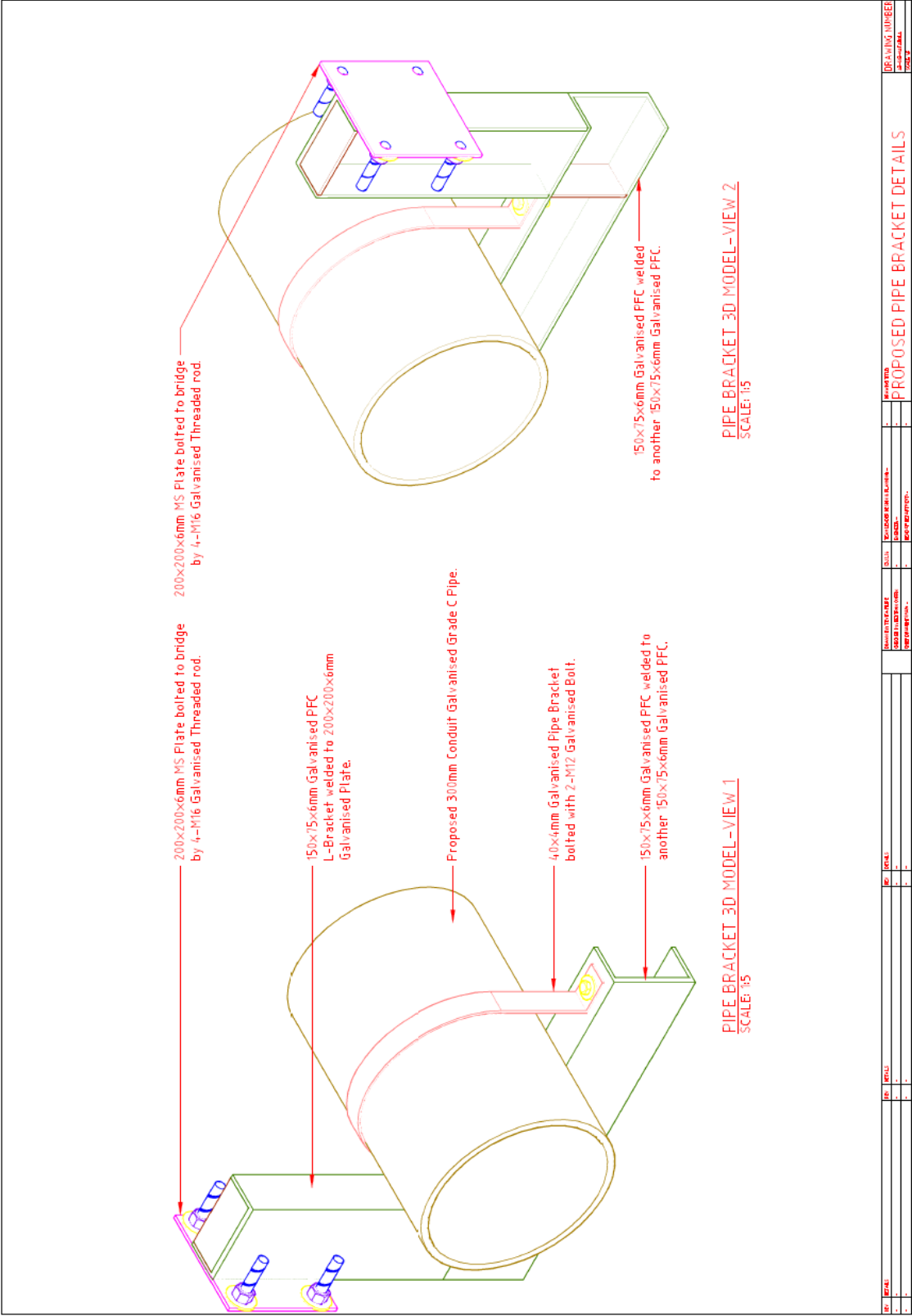
10.2 Appendix 2 – Technical Schedule

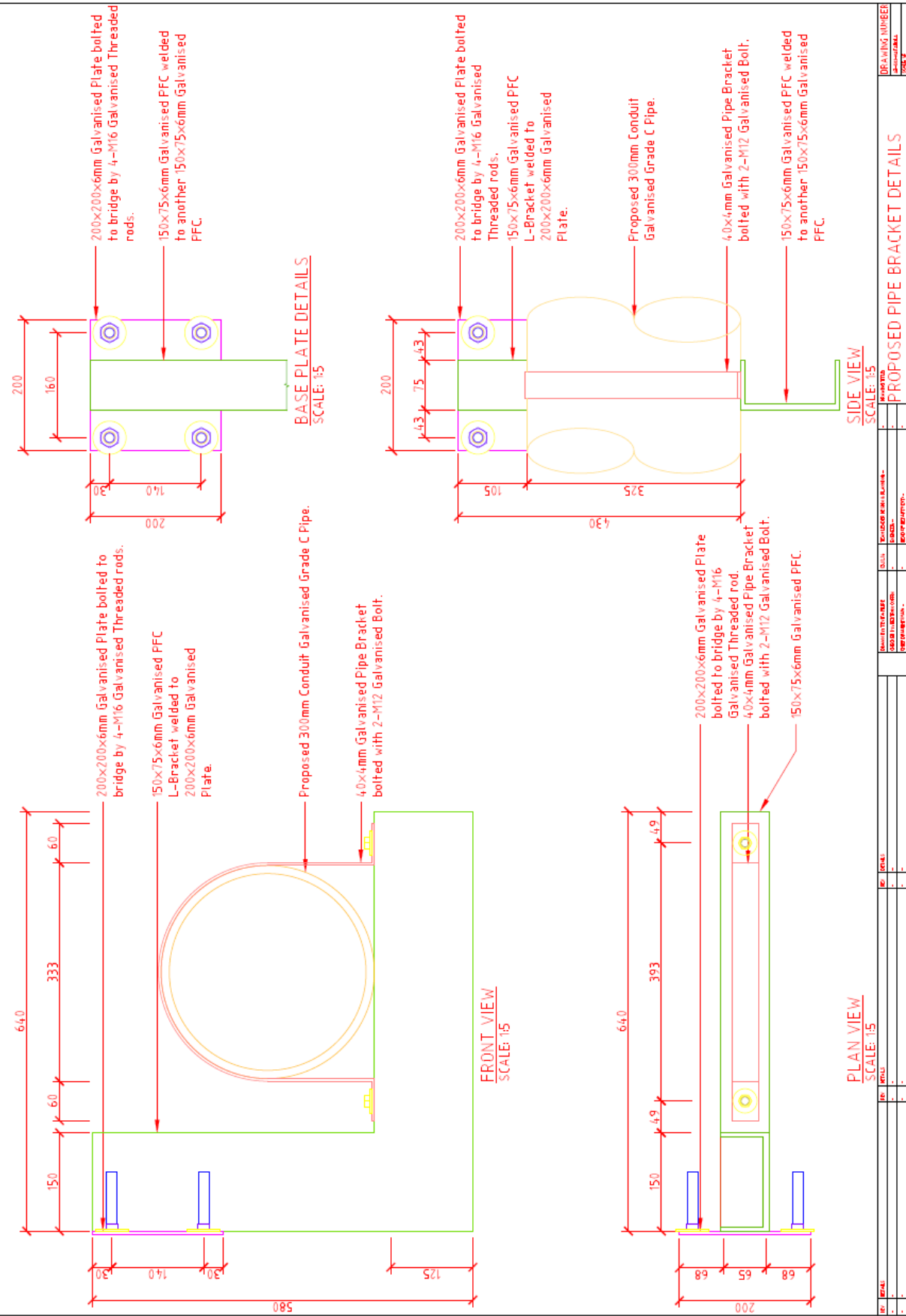
Bidders are to fill the blow schedule and submit with bid submission. This is a mandatory requirement. Failure to do so may result in the Bidder's submission being rejected.

	Requirement	Bidder's Response
1	Bidder's Company Details	
2	Provide Evidence of sound financial background and previous experience - Bidder to provide evidence such as financial statements and list of similar projects previously worked on.	
3	Origin of Materials - Bidder to provide list of materials to be used and their origin.	
4	Cable Crossing Structure Design includes:	
	A. 450mm Nominal Diameter Galvanized Grade C pipe. Bidder to mention standard to which steel pipe galvanized to.	
	B. Structure design to be able to accommodate 2 x 150mm diameter HD Electrical Conduit to be provided by Bidder.	
	C. Number of L-Brackets to remain or additional to be installed (Bidder to state overall L-Bracket quantity to be installed)	
	D. Number of existing Dyna Bolts to be replaced.	
	E. Number of existing Dyna Bolts to be reused.	
	F. Type of corrosion protection adopted. Specification of paint to be provided if used.	
	G. Detailed design with dimensions of	

	cable crossing support structure provided (must include plan and elevations with dimensions and each individual item clearly mentioned.)	
	H. Details of welding method to be used.	
	I. Details of Bolts and Nuts to be used (size and grade)	
5	Methodology for removing existing structure and installing new one.	
6	Name and Details of registered Structural Engineer to be used.	
7	Bidder has a Health and Safety Plan in place.	
8	Bidder has valid Insurance Policies as per Clauses 2.22.	
9	Time to commence design of new cable crossing support structure after award of contract (all works must be completed within maximum 6 months)	
10	Bidder to clearly mention any departure from specifications. If there are no departure from specification, then bidder to state as such.	

10.3 Appendix 3 - Cable Crossing Support Structure Drawings and Pictures
(As Reference Only)





NO.	REV.	DATE	BY	CHECKED	APPROVED	DESIGNED	DRAWN	SCALE	PROJECT	DATE	DR.	DATE	DR.
1									PROPOSED PIPE BRACKET DETAILS		DR.		



11 TENDER CHECKLIST.

The Bidders must ensure that the details and documentation mention below must be submitted as part of their tender Bid

Tender Number_____

Tender Name _____

1. Full Company / Business Name: _____

(Attach copy of Registration Certificate)

2. Director/Owner(s): _____

3. Postal Address:_____

4. Phone Contact:_____

5. Fax Number: _____

6. Email address: _____

7. Office Location:_____

8. TIN Number: _____

(Attach copy of the VAT/TIN Registration Certificate - Local Bidders Only (Mandatory)

9. FNPF Employer Registration Number: _____**(For Local Bidders only) (Mandatory)**

10. **Provide a copy of Valid FNPF Compliance Certificate (Mandatory- Local Bidders only)**

11. **Provide a copy of Valid FRCS (Tax) Compliance Certificate (Mandatory Local Bidders only)**

12. **Provide a copy of Valid FNU Compliance Certificate (Mandatory Local Bidders only)**

13. Contact Person: _____

I declare that all the above information is correct.

Name: _____

Position: _____

Sign: _____

Date: _____

12 Tender submission.

Bidders are requested to upload electronic copies via Tender Link by registering their interest at: <https://www.tenderlink.com/efl>

EFL will not accept any hard copy submission to be dropped in the tender box at EFL Head Office in Suva.

This tender closes at 4.00pm (1600hrs) on Wednesday 16th April, 2025.

For further information or clarification please contact our Supply Chain Office on phone **(+679) 3224360** or **(+679) 9992400** or email us on tenders@efl.com.fj

The bidders must ensure that their bid is inclusive of all Taxes payable under Fiji Income Tax Act. Bidders are to clearly state the percentage of VAT that is applicable to the bid prices.

The lowest bid will not necessarily be accepted as the successful bid.

The Tender Bids particularly the “Price” must be typed and not hand written.

Any request for the extension of the closing date must be addressed to EFL in writing three (3) working days prior to the tender closing date.

Tender Submission via email or fax will not be accepted.