



**Preferred Supplier for Supply  
Of  
Residential Pillar Box**

**MR 117/2025**

**ENERGY FIJI LIMITED**

## Revision History & Document Control

| Rev no. | Notes                      | Prepared By     | Reviewed By | Date of Issue |
|---------|----------------------------|-----------------|-------------|---------------|
| 1       | Issued for internal review | Rajiv Singh     |             | 8/02/18       |
| 2       | Revision                   |                 | Rajiv Singh | 5/07/18       |
| 3       | Revision                   | Anishal Chandra |             | 18/02/25      |
|         |                            |                 |             |               |
|         |                            |                 |             |               |
|         |                            |                 |             |               |
|         |                            |                 |             |               |

## Next Scheduled Revision

| Date of Next Revision | Notes | Revision By | Revision Approved By |
|-----------------------|-------|-------------|----------------------|
| August 2027           |       |             |                      |
|                       |       |             |                      |
|                       |       |             |                      |
|                       |       |             |                      |
|                       |       |             |                      |

# TABLE OF CONTENT

|  |    |
|--|----|
| Revision History & Document Control .....            | 2  |
| Next Scheduled Revision .....                        | 2  |
| 1.0 Introduction .....                               | 5  |
| 1 INSTRUCTIONS TO BIDDERS .....                      | 6  |
| 1.1 Eligible Bidders .....                           | 6  |
| 1.2 Eligible Materials, Equipment and Services ..... | 6  |
| 1.3 One Bid per Bidder .....                         | 6  |
| 1.4 Cost of Bidding .....                            | 6  |
| 1.5 Site Visits .....                                | 6  |
| 1.6 Contents of Bidding Documents .....              | 7  |
| 1.7 Clarification of Bidding Documents .....         | 7  |
| 1.8 Amendment of Bidding Document .....              | 7  |
| 1.9 Language of Bid .....                            | 7  |
| 1.10 Bid Prices .....                                | 7  |
| 1.11 Bid Currencies .....                            | 8  |
| 1.12 Bid Validity .....                              | 8  |
| 1.13 Format and Signing of Bids .....                | 8  |
| 1.14 Sealing and Marking of Bids .....               | 8  |
| 1.15 Deadline for Submission of Bids .....           | 8  |
| 1.16 Late Bids .....                                 | 8  |
| 1.17 Modification and Withdrawal of Bids .....       | 8  |
| 1.18 Rejection of One or All Bids .....              | 9  |
| 1.19 Process to be Confidential .....                | 9  |
| 1.20 Clarification of Bids .....                     | 9  |
| 1.21 Compliance with Specifications .....            | 9  |
| 2.0 References .....                                 | 10 |
| 2.1 Applicable Standards .....                       | 10 |
| 3.0 System Conditions .....                          | 11 |
| 3.1 Environmental Conditions .....                   | 11 |
| 3.1.1 Underground .....                              | 11 |
| 3.1.2 Above Ground .....                             | 11 |
| 3.2 System Conditions .....                          | 11 |
| 4.0 Design and Construction .....                    | 12 |
| 4.1 General .....                                    | 12 |
| 4.2 Pillar Bases .....                               | 13 |
| 4.3 Pillar Covers .....                              | 13 |
| 4.4 Pillar Insulating Panel .....                    | 13 |
| 5.0 Quality Assurance .....                          | 14 |

|             |  |           |
|-------------|--|-----------|
| <b>6.0</b>  | <b>Performance and Testing .....</b>                   | <b>14</b> |
| 6.1         | Pillar Bases and Covers .....                          | 14        |
| 6.1.1       | Evidence of Longevity .....                            | 14        |
| 6.1.2       | Resistance to Compression Test .....                   | 14        |
| 6.1.3       | Cover-Base Fixing Test .....                           | 14        |
| 6.2         | Type Test Compliance .....                             | 14        |
| 6.3         | Batch and Routine Tests .....                          | 15        |
| 6.4         | Acceptance Tests.....                                  | 16        |
| 6.5         | Witnessing of Tests .....                              | 16        |
| 6.6         | Compliance .....                                       | 16        |
| <b>7.0</b>  | <b>Packaging and Marking .....</b>                     | <b>17</b> |
| 7.1         | General .....  | 17        |
| 7.2         | Storage .....  | 17        |
| <b>8.0</b>  | <b>Information to be supplied .....</b>                | <b>17</b> |
| <b>9.0</b>  | <b>Stock Availability .....</b>                        | <b>17</b> |
| <b>10.0</b> | <b>Environmental Considerations .....</b>              | <b>18</b> |
| <b>11.0</b> | <b>Reliability .....</b>                               | <b>18</b> |
| <b>12.0</b> | <b>Samples .....</b>                                   | <b>18</b> |
| 12.1        | Production Samples.....                                | 18        |
| 12.2        | Sample Delivery.....                                   | 18        |
| <b>13.0</b> | <b>Training .....</b>                                  | <b>18</b> |
| <b>14.0</b> | <b>Appendix .....</b>                                  | <b>19</b> |
| 14.1        | Technical Details – Pillar Base .....                  | 19        |
| 14.2        | Technical Details – Pillar Cover.....                  | 21        |
| 14.3        | Technical Details – Pillar Insulating Panel .....      | 23        |
| 14.4        | Submission Requirements.....                           | 24        |
| 14.5        | Typical Layout Drawing – Pillar Base .....             | 25        |
| 14.6        | Typical Layout Drawing – Pillar Cover.....             | 26        |
| 14.7        | Typical Layout Drawing – Pillar Insulating Panel ..... | 27        |

## 1.0 Introduction

Energy Fiji Limited [EFL] is responsible for generation, transmission and distribution of electricity in Viti Levu, Vanua Levu, Ovalau and Taveuni in Fiji. By the end of 2024, EFL had 223,539 customers. This includes residential, commercial and institutional customers.

The Energy Fiji Limited (EFL) is requesting proposal for the Preferred Supplier for supply of item listed below for EFL's consumption to carryout repair, maintenance and Construction of Power line Network in Fiji.

The preferred Supplier arrangement will be for a period of 3 (three) years from the date of signing of the contract. The award of this Tender may be split and awarded to more than one successful bidders.

This document outlines the technical requirements for pillar boxes for use in EFL's electricity distribution networks.

The items covered under this specification are tabulated below.

| Stock No. | Item Description       |
|-----------|------------------------|
| 105028    | Residential Pillar Box |

This Specification outlines the general requirements of design, manufacture, testing, supply and delivery of pillar boxes for use in low and medium voltage underground distribution systems as a housing for service distribution points and/or LV/MV interconnection point within the country.

The pillar boxes should be suitable for outdoor use with floor mounting and shall conform in all aspects to high engineering standards, design and workmanship. The offered equipment shall be complete with all components and accessories necessary for their effective and trouble free operation.

# **1 INSTRUCTIONS TO BIDDERS**

## **1.1 Eligible Bidders**

This invitation is open to all Bidders who have sound Financial Background, and have previous experience in design, manufacture, testing and supply of such Residential Pillar Box.

Bidders shall provide such evidence of their continued eligibility satisfactory to EFL as EFL shall reasonably request. Bidders who are not manufacturers of such pillar boxes shall provide evidence of agency.

Bidders shall not be under a declaration of ineligibility for corrupt or fraudulent practice.

## **1.2 Eligible Materials, Equipment and Services**

The materials, equipment, and services to be supplied under the Contract shall have their origin from reputable companies (as specified by EFL where relevant) and from various countries and all expenditures made under the Contract will be limited to such materials, equipment, and services. Upon request, bidders may be required to provide evidence of the origin of materials, equipment, and services.

For purposes of this Contract, "services" means the works and all related services including design services.

For purposes of this Contract, "origin" means the place where the materials and equipment are mined, grown, produced or manufactured, and from which the services are provided. Materials and equipment are produced when, through manufacturing, processing or substantial or major assembling of components, a commercial recognized product results that is substantially different in basic characteristics or in purpose or utility from its components.

The materials, equipment and services to be supplied under the Contract shall not infringe or violate any industrial property or intellectual property rights or claim of any third party.

## **1.3 One Bid per Bidder**

Each bidder shall submit only one bid. A bidder who submits or participates in more than one bid will cause all those bids to be rejected.

## **1.4 Cost of Bidding**

The bidder shall bear all costs associated with the preparation and submission of its bid and EFL will in no case be responsible or liable for those costs.

## **1.5 Site Visits**

Bidders can visit existing EFL networks by making arrangements to visit existing EFL installations. Bidders are required to familiarize themselves with the existing EFL installations so the solutions they offer does not require modification to existing poles and support infrastructure.

## **1.6 Contents of Bidding Documents**

The bidder is expected to examine carefully the contents of this Bidding document. Failure to comply with the requirements of bid submission will be at the bidder's own risk. Bids which are not substantially responsive to the requirements of the bidding documents will be rejected.

## **1.7 Clarification of Bidding Documents**

A prospective bidder requiring any clarification of the bidding documents may notify EFL in writing by email, addressed to:

Jitendra Reddy  
Manager Procurement, Inventory & Supply Chain  
2 Marlow Street,  
Suva, Fiji  
Phone: +679 331 3333 Ext 2320 or  
Mobile: +679 999 2400  
Email: [JReddy@efl.com.fj](mailto:JReddy@efl.com.fj)

EFL will respond to any request for clarification which it receives earlier than 10 days prior to the deadline for submission of bids.

## **1.8 Amendment of Bidding Document**

At any time prior to the deadline for submission of bids, EFL may, for any reason, whether at its own initiative or in response to a clarification requested by a prospective bidder, modify the bidding documents by issuing addenda.

## **1.9 Language of Bid**

The bid, and all correspondence and documents related to the bid, exchanged between the bidder and the EFL shall be written in the English language.

## **1.10 Bid Prices**

Unless specified otherwise, Bidders shall quote for the entire facilities on a "single responsibility" basis such that the total bid price covers all the Supplier's obligations mentioned in or to be reasonably inferred from the bidding documents in respect of the design, manufacture, including procurement and subcontracting (if any), testing and delivery.

Bidders shall give a breakdown of the prices in the manner and detail called for in this bidding document, or any issued addenda.

Bids shall be given on CIF basis. The point of delivery shall be EFL's Navutu Depot in Lautoka. The term CIF shall be governed by the rules prescribed in the current edition of Incoterms, published by the International Chamber of Commerce, Paris.

EFL has a marine insurance cover for items it is required for purchase for its project and operational works. Bidders are required to comment if the marine insurance component is covered in their bids.

### **1.11 Bid Currencies**

Prices shall be quoted in a single currency only.

### **1.12 Bid Validity**

Bids shall remain valid for a period of **120 days** from the date of Deadline for Submission of Bids specified in Sub-Clause 21.1.

### **1.13 Format and Signing of Bids**

The bidder shall provide one electronic copy of the Technical and Financial proposals on EFL's electronic tender hosting website; <https://www.tenderlink.com/efl>

The bid shall contain no alterations, omissions or additions, except those to comply with instructions issued by EFL, or as necessary to correct errors made by the bidder, in which case such corrections shall be initialed by the person or persons signing the bid.

### **1.14 Sealing and Marking of Bids**

Due to the Covid19 restrictions on movements, bidders are encouraged to bid via Tender link Portal.

### **1.15 Deadline for Submission of Bids**

Bids must be received by EFL at the address specified above no later than **1600 hours (Fiji Time) 9<sup>th</sup> April, 2025**.

EFL may, at its discretion, extend the deadline for submission of bids by issuing an addendum, in which case all rights and obligations of EFL and the bidders previously subject to the original deadline will thereafter be subject to the deadlines extended.

### **1.16 Late Bids**

Any bid received by EFL after the deadline for submission of bids prescribed above will be rejected.

### **1.17 Modification and Withdrawal of Bids**

The bidder may modify or withdraw its bid after bid submission, provided that written notice of the modification or withdrawal is received by EFL prior to the deadline for submission of bids.

No bid may be modified by the bidder after the deadline for submission of bids.



## **1.18 Rejection of One or All Bids**

EFL reserves the right to accept or reject any bid, and to annul the bidding process and reject all bids, at any time prior to award of Contract, without thereby incurring any liability to the affected bidder or bidders or any obligation to inform the affected bidder or bidders of the grounds for the rejection.

## **1.19 Process to be Confidential**

- 1.19.1 Information relating to the examination, clarification, evaluation and comparison of bids and recommendations for the award of a contract shall not be disclosed to bidders or any other persons not officially concerned with such process.
- 1.19.2 Any effort by a bidder to influence EFL's processing of bids or award decisions may result in the rejection of the bidder's bid.
- 1.19.3 Lowest bid will not necessarily be accepted as successful bid.

## **1.20 Clarification of Bids**

To assist in the examination, evaluation and comparison of bids, EFL may, at its discretion, ask any bidder for clarification of its bid. The request for clarification and the response shall be in writing, but no change in the price or substance of the bid shall be sought, offered or permitted except as required to confirm the correction of arithmetic errors discovered by EFL in the evaluation of the bids.

## **1.21 Compliance with Specifications**

The tender shall be based on the equipment and work specified and shall be in accordance with the Technical Specification. It should be noted that unless departures from specifications are detailed in Schedules of the Technical Specification, the tender would be taken as conforming to the Specification in its entirety. The Bidder shall tender for the whole of the Works included in the Specification.

## 2.0 References

### 2.1 Applicable Standards

The item shall be designed, manufactured and tested in accordance with the latest edition of the Standards specified below and all amendments issued prior to the date of closing of tenders except where varied by this specification.

|                     |   |
|---------------------|---|
| AS 1145.1           | Determination of tensile properties of plastic materials  |
| AS 1275             | Metric screw threads for fasteners  |
| AS 1368             | Plastic – Thermoplastic materials – Determination of Vicat softening temperature (VST)                          |
| AS 1795             | Sheets and boards for electrical purpose  |
| AS 1580 Part 481.1  | Paints and related materials – Methods of tests<br>Coating exposed to weathering – Degree of flaking or peeling |
| AS/NZS 60529        | Degrees of protection provided by enclosures for electrical equipment   |
| AS/NZS 60695.2.13   | Fire hazard testing – Glowing/ hotwire based test methods – Glow-wire ignitability test method for materials    |
| AS 2837 (withdrawn) | Wrought alloy steels – Stainless steel bars and semi-finished products  |
| AS 2700             | Color standards for general purpose   |
| AS 1100             | Drawing practice scales – Part 7  |
| ISO 31000           | Risk Management   |
| AS/NZS ISO 9001     | Quality management systems -Requirements  |

Should inconsistencies be identified between standards and/or this specification, the tenderer shall immediately refer such inconsistencies to the EFL for resolution.

## 3.0 System Conditions

### 3.1 Environmental Conditions

The pillar boxes shall be suitable for installation partially underground and shall be designed to withstand the following service conditions.

#### 3.1.1 Underground

| Description |   | Conditions   |
|-------------|---|--|
| Soil        | : | Variable soil conditions ranging from high resistivity rock to normal clays to areas of acidic soil (ph 4 or less) with resistivities less than 20Ωm |
| Temperature | : | 25°C Maximum<br>8°C Minimum  |

#### 3.1.2 Above Ground

| Description                     |   | Conditions   |
|---------------------------------|---|--|
| Atmosphere                      | : | Saliferous, corrosive and dusty  |
| Ambient Temperature             | : | Peak: 40°C<br>24 Hour Average: 30°C<br>Annual Average: 22°C<br>Minimum: 10°C |
| Relative Humidity (Average)     | : | 85%  |
| Rainfall                        | : | Annual Average: 1900mm   |
| Isokeraunic (Thunder day) level | : | 60 thunder days per year   |
| Seismic                         | : | To a maximum of 7 on the open-ended Richter Scale                            |

**Note:** Fiji is situated in a region where cyclones are experienced frequently. All plant and equipment shall be designed and constructed to withstand these extreme conditions.

### 3.2 System Conditions

|   |                     |
|---|---------------------|
| Nominal Voltage                         | 240V/ 415V          |
| System Highest Voltage                  | 660V                |
| System Frequency                        | 50Hz                |
| Number of Phases                        | 1 or 3              |
| System Earthing                         | Effectively Earthed |
| Impulse Withstand Voltage (peak)        | -                   |
| Power Frequency Withstand Voltage (rms) | 15kV                |

## 4.0 Design and Construction

Equipment offered that is found on inspection not to conform to this Specification shall be replaced by the vendor at no cost to Energy Fiji Limited.

### 4.1 General

The pillar box shall incorporate an injection molded base with a removable injection molded cover and an insulating panel each being manufactured from electrically non-conducting materials.

The pillar box cover shall attach to the base by the D-head fixing screws located in accordance with EFL Drawing No A3 01 E24 021(2).

The base shall support the various types of panels, by means of the slots alone as detailed on EFL Drawing No A3 01 E24 021(1). The base shall support the panels vertically and in a rigid manner.

The insulating panel supplied with the pillar shall be suitable for mounting in the pillar base slots as detailed in EFL drawing No A3 01 E24 021(3).

The panel mounting slots shall meet the following requirements:

- a) Inserting Panels: Each pair of panel mounting slots shall withstand a downward force of 0.20 kN applied to the panel without breaking or deforming the slots.
- b) Installing Fuses: Each pair of panel mounting slots shall withstand a force of 0.20 kN applied horizontally in both directions at a height of 200 mm vertically above the slots without breaking or deforming the slots.

The pillar box installed in normal service conditions shall afford a minimum degree of protection of IP24D to AS/NZS 60529 and shall incorporate free flow ventilation by way of openings to minimize condensation of moisture on the internal equipment. Full details of the ventilation design shall be supplied in the offer. IP24D protection must be maintained.

**Note: A minimum of five (5) top ventilation holes shall be provided in the pillar cover 4 mm to 5 mm in diameter and to ensure compliance with the requirements of IP24D to AS/NZS 60529 the enclosure shall have a suitable barrier in place behind the holes, which complies with clause 3.1 of AS/NZS 60529. The base of the cover shall have an indirect entry path to facilitate ventilation.**

The pillar box installed in the normal service condition shall be capable of supporting a minimum uniformly distributed force of 1.5 kN applied to the top surface of the cover for up to thirty minutes without permanent deformation.

The manufacturer's identification and date of manufacture shall be molded on both the cover and base in any position other than on the external walls of the base or on the external walls and external top surface of the cover.

The preferred color of bases and covers shall be green near G14 as defined by AS 2700. Bases manufactured with natural pigments (base color without additives) will be considered. The color shall be stable to the ultraviolet effects of sunlight in Fiji. Full details of the color and its ultraviolet stability shall be supplied with the offer.

Material used in the construction of bases and covers shall be impact resistant, ultraviolet stabilized, flame retardant with a glow-wire ignition temperature exceeding 650°C when tested in accordance with AS/NZS 60695.2.13 (GWIT exceeding 650°C preferred) and resist scratching, crazing, fading and possess the characteristics listed in Appendix 14.1 and 14.2. Full details of flame retardants shall be supplied with the offer.

The weight of each base and each cover shall not exceed 16 kg.

Suppliers shall provide in Appendix 14.1 and 14.2 details of stabilizer additives included in the formulation and copies of ultraviolet testing performed on the bases and covers offered.

## **4.2 Pillar Bases**

Bases offered shall have dimensions as shown in EFL Drawing No A3 01 E24 021(1).

The pillar base shall have no external ribbing above the groundline and all surfaces shall be free of air-voids and sharp edges.

Threaded brass inserts shall be located in the pillar bases as shown on EFL Drawing No A3 01 E24 021(1) and have an internal thread of M10 x 1.5 pitch. The inserts shall be fully drilled and tapped so as to provide a through-hole free from contamination.

The four cover fixing screws as detailed in EFL Drawing No A3 01 E24 021(1) shall be brass or 304 stainless steel with captive washer and secured into the base.

## **4.3 Pillar Covers**

Covers offered shall have dimensions as shown in EFL Drawing No A3 01 E24 021(2).

The molded cover shall have the words "**DANGER**" and "**ELECTRICITY**" molded in raised lettering on the top surface, in letters not less than 25 mm high.

Covers shall be designed such that condensation and other moisture does not drip onto equipment housed in the pillar.

## **4.4 Pillar Insulating Panel**

The insulating panels shall be of type X made to AS 1795 with the design and dimensions as specified in EFL drawing No A3 01 E24 021(3).

The insulating panel shall be marked with the following:

**INSULATING PANEL**  
**AS 1795 TYPE X**

The electrical and mechanical properties of the insulating panel is to be provided with the bidding document.

## **5.0 Quality Assurance**

The manufacture shall submit evidence that the design and manufacture of the pillar boxes are in accordance with AS/NZS ISO 9001 and shall include the Capability Statement associated with the Quality System Certification.

## **6.0 Performance and Testing**

### **6.1 Pillar Bases and Covers**

#### **6.1.1 Evidence of Longevity**

Suppliers shall supply evidence of the durability of the materials used and copies of the results of tests carried out.

#### **6.1.2 Resistance to Compression Test**

Apparatus - The following apparatus are required:

- a) A horizontal surface large enough to support a base and cover assembly oriented vertically.
- b) An intermediate piece having flat surface dimensions of 250 millimeters by 200 millimeters.
- c) A means of applying a compression force of 1.5 kN.
- d) A conditioning chamber capable of maintaining a temperature of  $45^{\circ} \pm 2^{\circ}\text{C}$ .

Test Pieces - Tests shall be applied to one base and cover assembly.

Procedure - The procedure shall be as follows:

- a) Place the test piece in the conditioning chamber at a temperature of  $45^{\circ}\text{C}$  for a time of at least 10 hours.
- b) Immediately after conditioning place the base and cover assembly on the horizontal test surface and center the intermediate piece on the top of the test piece.
- c) Apply a compression force of 1.5 kN to the intermediate piece for 30 minutes.

Criteria of Acceptance - All components of the test piece shall have no permanent deformation.

#### **6.1.3 Cover-Base Fixing Test**

Apparatus - The following apparatus are required:

- a) A means of rigidly fixing the test base to a horizontal surface.
- b) A means of applying a horizontal force of 2.0 kN to the test piece.

Test Piece - Tests shall be applied to one base and tall cover assembly using D-head screws for fixing.

Procedure - At ambient temperature apply a horizontal force of 2.0 kN, 100mm below the top surface on the wide side of the cover.

Criteria of Acceptance - The test piece shall show no signs of cracking or breaking at the mounting screws or dislodgment of the brass inserts.

Note: A pillar is comprised of two components that is a base and cover. If a supplier manufactures or has access to only one component, a plug having the dimensions of the mating component shall be used for the purpose of testing for resistance to compression and cover-base fixing.

## **6.2 Type Test Compliance**

All Equipment offered shall be fully type tested in accordance with the applicable standards outlined in this Specification. Where the equipment offered has been type tested to Standards other than those specified in this Specification, full details of the other Standards are to be provided at the time of tendering.

Copies of original Type Test certificates/ reports shall be included in full [in accordance with the relevant standard (including all drawings, revisions and where applicable, oscillograms and test results as stipulated in the applicable standards as specified in this Specification) with the tender regardless of whether or not the equipment has been supplied previously.

All Equipment of a similar design to that previously tested is offered, consideration may be given to accepting previous type test reports. The Supplier shall state if such tests exist. The Supplier is requested to substantiate their claims of equivalent type test performance with written engineering evaluation, where full Type Test documentation is not submitted for each of the Materials offered. Such evaluation must provide all relevant details so that EFL can establish the validity of existing type tests.

The EFL prefers that all Type Tests for equipment offered are certified by a laboratory accredited by an Accreditation Entity. An Accreditation Entity is a signatory to the International Laboratory Accreditation Cooperation (ILAC) Mutual Recognition Arrangement (MRA), for example; the National Association of Testing Authorities, Australia (NATA). Full accreditation details of the type testing facilities and the accreditation certifying entity and any mutual recognition arrangements with other accreditation entities shall be provided by the Supplier.

Where Type Tests are performed in other unaccredited laboratories/customer facilities, the tests must be witnessed by an endorsed witness or an independent witness approved by EFL. Details of the independent witness must be provided. Internally generated type test reports shall be to the same standard as expected from an independent accredited laboratory.

The EFL may request repeat of Type Tests to prove compliance to this Specification.

All test certificates must include the manufacturer's serial number(s). On allocation, the EFL's order number, contract/item number and specification number must be added to the certificate, or as an attachment to the test report.

### **6.3 Batch and Routine Tests**

For the purposes of this Specification, a batch shall be defined as a single production run of a single set of input materials used for the output of the Materials. Where the raw materials used in the Materials offered and/ or the manufacturing process have changed, a new batch number shall be allocated.

All Equipment offered shall be fully batch and routine tested in accordance with the applicable standards. Where the equipment offered will be batch and routine tested to Standards other than those specified, full details of these Standards are to be provided at the time of tendering. Batch and routine tests to standards other than those specified in this Specification are not permitted without EFL's written permission.

The Supplier shall submit a sampling test plan in accordance with AS1199.1 "Sampling Procedures for Inspection by Attributes", to be agreed to by EFL, and nominate the approved test facility. The test plan submission shall identify the Materials and quantity to be tested including the frequency of the tests.

Prior to delivery of Materials, the Supplier shall have carried out sample failure testing of Materials and components of each batch as specified in accordance with the applicable standards. A copy of the results of all tests carried out (with corresponding batch numbers) shall be forwarded to EFL prior to delivery of that batch of Materials. EFL will not accept a batch if any sampled item or component in that batch fails to meet the test requirements.

Prior to each delivery of the Materials or as agreed with EFL, a "Certificate of Compliance" is to be supplied by the Supplier.

The Certificate of Compliance shall state:

- The Batch number, the Supplier's name, the name of the Manufacturing Company, the Country of manufacture, and Location name of the manufacturer.

- The Materials meet the dimensional tolerances and protective coating requirements specified on the relevant drawings.
- The Materials have been batch tested in accordance with the applicable standard.

#### **6.4 Acceptance Tests**

The EFL may carry out acceptance test on equipment to prove it conforms to the requirements of this Specification. Any equipment showing evidence of failure to comply with the requirements of this specification will be liable to rejection.

#### **6.5 Witnessing of Tests**

The EFL reserves the right to witness all testing. The Supplier shall give EFL reasonable notice of when testing will be carried out and one (1) EFL engineers to be invited to witness the testing.

#### **6.6 Compliance**

The Supplier shall state in writing that their offer complies with the relevant Standards and this specification. If the Supplier is offering equipment manufactured to an equivalent standard, full details of that standard must be given including a copy written in English.



## 7.0 Packaging and Marking

### 7.1 General

The packaging of items by the bidder must ensure that they are capable of being delivered undamaged giving due consideration to the quantity, distance of transportation and the preferred method of handling at each location.

Each packaged lot shall be marked with the following information:

- Manufactures Name
- Purchase Order Number
- Contact No.
- EFL Stock Code
- Item Description
- Pack Size
- Pack Weight

### 7.2 Storage

The equipment shall be capable of being stored without deterioration within the temperature range of 10°C to 40°C for no less than 24 months.

## 8.0 Information to be supplied

The following information shall be supplied with the offer:

- a) Catalogue describing the items and indicating the model number
- b) Constructional features and material used for manufacturing
- c) Complete dimensional drawing
- d) Quality assurance certificate as per the applicable standards stated in Clause 5.0
- e) Duly completed schedule of guaranteed technical particulars
- f) Manufacturing experience and list of purchasers
- g) Test certificates confirming to Clauses 6.1.1, 6.1.2 and 6.1.3
- h) Type test certificates
- i) Sample routine test certificates

**Offers of vendors who fail to furnish above particulars shall be rejected.**

## 9.0 Stock Availability

The bidder is required to show the size of his/her stock holding and the ability to meet the required estimate quantity per annum. The movement of the pillar boxes will depend on the EFL's project works and for operation and maintenance purposes. An estimate movement of the items are outlined in the table below but it will not be purchase as a lump sum quantity at once. Hence, the successful bidder will be required to carry a consignment / safety stock at times to meet EFL's demand within the three year contract period:

| Stock No. | Item Description       | 3 Year Stock Movement |
|-----------|------------------------|-----------------------|
| I05028    | Residential Pillar Box | 1747                  |

## **10.0 Environmental Considerations**

Suppliers are required to comment on the environmental soundness of the design and the materials used in the manufacture of the items tendered. In particular, comments should address such issues as recycling and disposal at the end of service life.

## **11.0 Reliability**

Suppliers are required to comment on the reliability of the equipment and the performance of the materials tendered for a service life of 50 years under the specified system and environmental conditions.

## **12.0 Samples**

### **12.1 Production Samples**

When requested, production samples of each item shall be submitted with the offer. The requirement for samples may be waived for the following conditions:

- a) The offered items is currently under contract or has previously been supplied to EFL under contract and there have been no changes to the design or materials.
- b) The offered items have been supplied to EFL for approval prior to this offer and there have been no changes to design or materials.

### **12.2 Sample Delivery**

Each sample shall be delivered freight free, suitably crated and packaged and labelled with the following information:

- Name of supplier and this contact number
- Contract item numbers and tender number
- Any supporting data on features or characteristics

## **13.0 Training**

Training in the form of drawings, instructions and/or audio visual shall be provided for the items accepted under this offer.

This material shall include but not limited to the following topics:

- Handling
- Storage
- Application
- Installation
- Maintenance
- Disposal

## 14.0 Appendix

### 14.1 Technical Details – Pillar Base

All tenderers are required to complete and submit a copy of this form with their bid submissions.  
A separate schedule is to be provided for each item offered.

| Particulars  | Units    | Requirements   | Bidder's Response |
|--|----------|--|-------------------|
| Manufacturer's name  |          | Bidder to state  |                   |
| Place of manufacture   |          | Bidder to state  |                   |
| Material Offered   |          | Polymeric compound   |                   |
| Origin of materials used for manufacturing                                 |          | Bidder to state  |                   |
| Ultra-violet Stability   |          | Provide test report on UV stability  |                   |
| Ignitability- Tested to AS/NZS 60695.2.13 (Glow-wire ignition temperature) | 0C       | >650 preferred   |                   |
| Material Specification Sheet   |          | Provide a copy.  |                   |
| Minimum Wall Thickness   | mm       | 4  |                   |
| Mass (kg)  | kg       | 16 (maximum)   |                   |
| Yield Tensile Strength (MPa) (Stress)- tested to AS1145.1-77A@23°C         | MPa      | 24 (Minimum)   |                   |
| Izod Notched Impact Strength- tested to ASTM D256 @ 23°C                   | J/m      | 140 (Minimum)  |                   |
| Melt Flow Index (MFI) – tested to ISO 1133 Condition E                     | gm /min. | 2.0 (Maximum)  |                   |
| Vicat Softening Point (VSP) – tested to AS1368                             | 0C       | 128°C (Minimum)  |                   |
| Compliance with panel mounting requirements                                |          | <u>Inserting Panels:</u> 0.20kN downward force without breaking or deforming slots.                            |                   |
|  |          | <u>Installing Fuses:</u> 0.20kN horizontally at 200mm above base without breaking or deforming slots.          |                   |
| Resistance to compression  |          | Support 1.5kN downward force without permanent deformation.  |                   |
| Cover-Base fixing  |          | Withstand a 2.0kN horizontal force 100mm below top of cover without signs of dislodgment of the brass inserts. |                   |
| Means of supplying D-head screws with base                                 |          | Screwed into inserts in base   |                   |
| Color  |          | Green near G14 (AS2700)  |                   |

|  |  |  |  |
|--|--|--|--|
| Base interchangeable with present design |  | Critical dimensions<br>(EFL drawing No. A3 01 E24<br>021(1))               |  |
| Ventilation                              |  | Indirect entry path (IP24D<br>to AS/NZS 60529 with pillar<br>cover fitted) |  |

**Name of Tenderer:** \_\_\_\_\_

**Signature of Tenderer:** \_\_\_\_\_

**Date:** \_\_\_\_\_

## 14.2 Technical Details – Pillar Cover

All tenderers are required to complete and submit a copy of this form with their bid submissions.

A separate schedule is to be provided for each item offered.

| Particulars   | Units       | Requirements   | Bidder's Response |
|---|-------------|--|-------------------|
| Manufacturer's name   |             | Bidder to state  |                   |
| Place of manufacture  |             | Bidder to state  |                   |
| Material Offered  |             | Polymeric compound   |                   |
| Origin of materials used for manufacturing                                    |             | Bidder to state  |                   |
| Minimum Wall thickness  | mm          | 4  |                   |
| Ultra-violet Stability  |             | Provide test report on UV stability  |                   |
| Ignitability- Tested to AS/NZS 60695.2.13<br>(Glow-wire ignition temperature) | OC          | >650 preferred   |                   |
| Material Specification Sheet  |             | Provide a copy.  |                   |
| Minimum Wall Thickness  | mm          | 4  |                   |
| Mass (kg)   | kg          | 16 (maximum)   |                   |
| Yield Tensile Strength (MPa)<br>(Stress)-tested to AS1145.1-77A @23°C         | MPa         | 24 (Minimum)   |                   |
| Izod Notched Impact Strength-<br>tested to ASTM D256 @ 23°C                   | J/m         | 140 (Minimum)  |                   |
| Melt Flow Index (MFI) – tested<br>to ISO 1133 Condition E                     | gm<br>/min. | 2.0 (Maximum)  |                   |
| Resistance to compression   |             | Support 1.5kN downward force<br>without permanent deformation.   |                   |
| Cover-Base fixing   |             | Withstand a 2.0kN horizontal<br>force 100mm below top of cover<br>without signs of cracking or<br>breaking at the fixing screws. |                   |
| Color   |             | Green near G14 (AS2700)  |                   |
| Cover interchangeable with<br>present design                                  |             | Critical dimensions<br>(EFL drawing No. A3 01 E24<br>021(2))   |                   |
| Degree of protection to AS/NZS<br>60529                                       |             | IP24D to AS/NZS 60529<br>when fitted to base   |                   |
| Labelling- refer clause 5.3.2   |             | "DANGER" "ELECTRICITY"<br>>25mm<br>high  |                   |
| Ventilation with barrier  |             | 5 holes (minimum) 4-5mm in<br>diameter<br>IP24D to AS/NZS 60529  |                   |

**Name of Tenderer:** \_\_\_\_\_

**Signature of Tenderer:** \_\_\_\_\_

**Date:** \_\_\_\_\_

### 14.3 Technical Details – Pillar Insulating Panel

All tenderers are required to complete and submit a copy of this form with their bid submissions.  
A separate schedule is to be provided for each item offered.

| Particulars   | Response |
|---|----------|
| Insulating panel is of Type X as per AS 1795?                                     | Yes/ No  |
| Design and dimensions of insulating panel as per EFL drawing No A3 01 E24 021(3)? | Yes/ No  |
| Marking on insulating panel as specified in Clause 4.4?                           | Yes/ No  |
| Electrical and mechanical properties submitted with the bid?                      | Yes/ No  |

Name of Tenderer: \_\_\_\_\_

Signature of Tenderer: \_\_\_\_\_

Date: \_\_\_\_\_

#### 14.4 Submission Requirements

All tenderers are required to complete and submit a copy of the submission requirements with their bid submissions.

| Requirements   | Response from Bidders |
|--|-----------------------|
| Completed technical details (Clause 14.1 to 14.3) (Yes/No)   |                       |
| Training included as part of Bid. (Yes/No)   |                       |
| Witnessing included as part of bid. (Yes/No)   |                       |
| Payment conditions. (CIF preferred)  |                       |
| Delivery period  |                       |
| Price review period after award of tender. (months)  |                       |
| Bidders company profile outlining financial, technical and production capabilities.  |                       |
| Detailed reference list of customers already using equipment offered during the last 5 years with particular emphasis on units of similar design and rating. |                       |
| Quality management system used in the production of pillar boxes, attached certificate.  |                       |
| Health, Safety and Environmental plans.  |                       |
| Detailed receiving, handling and storage details.  |                       |
| Minimum warranty period from time of acceptance of pillar boxes.   |                       |
| Sample inspection and test plan.   |                       |
| Typical installation manual for pillar boxes.  |                       |
| Disposal method after service life.  |                       |
| Complete dimensional drawing.  |                       |
| List of test certificates provided. (As per Clause 6.0)  |                       |
| Sample routine test certificates.  |                       |

**Name of Tenderer:** \_\_\_\_\_

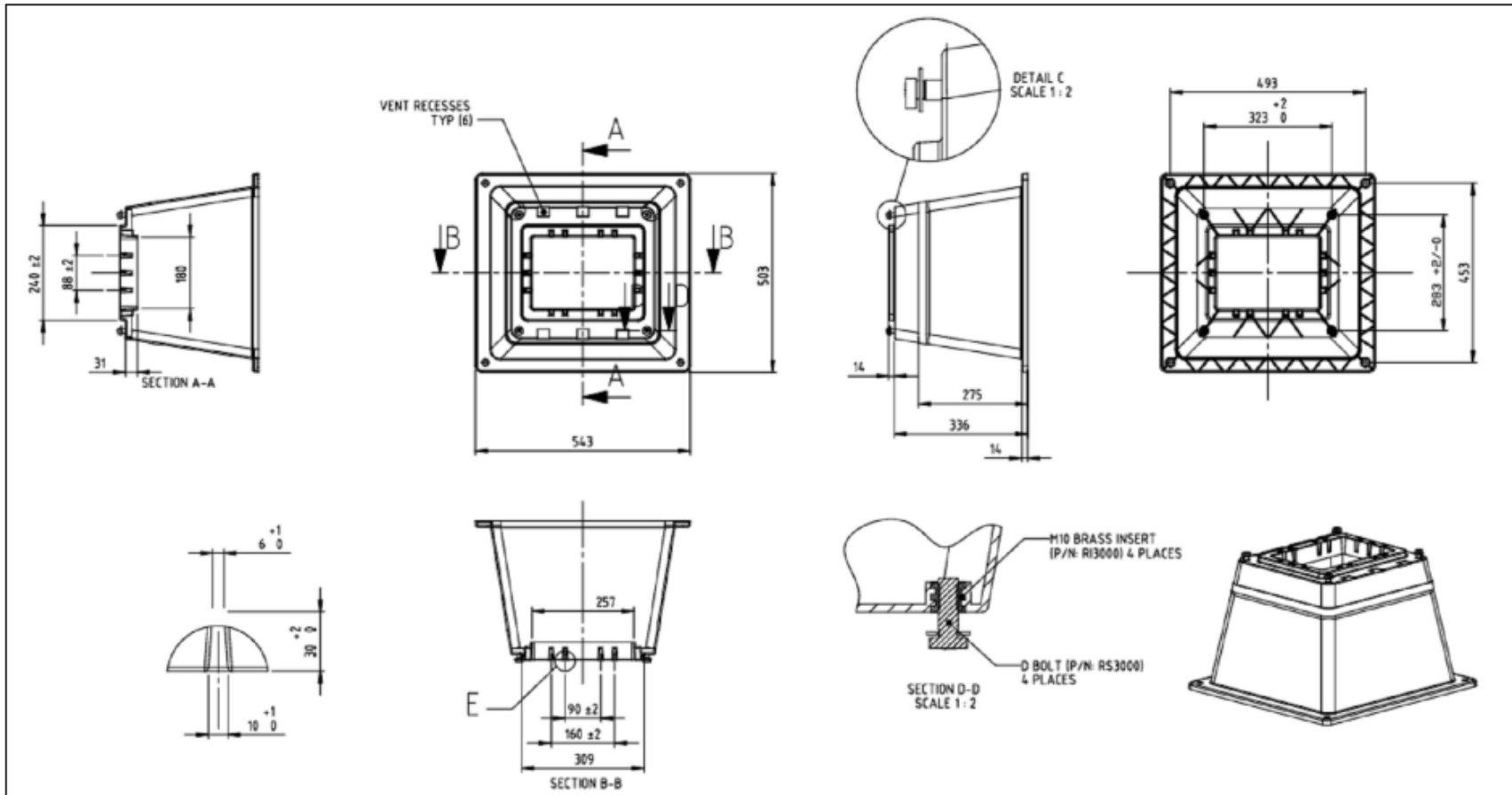
**Signature of Tenderer:** \_\_\_\_\_

**Date:** \_\_\_\_\_



## 14.5 Typical Layout Drawing – Pillar Base

A3 01 E24 021(1)

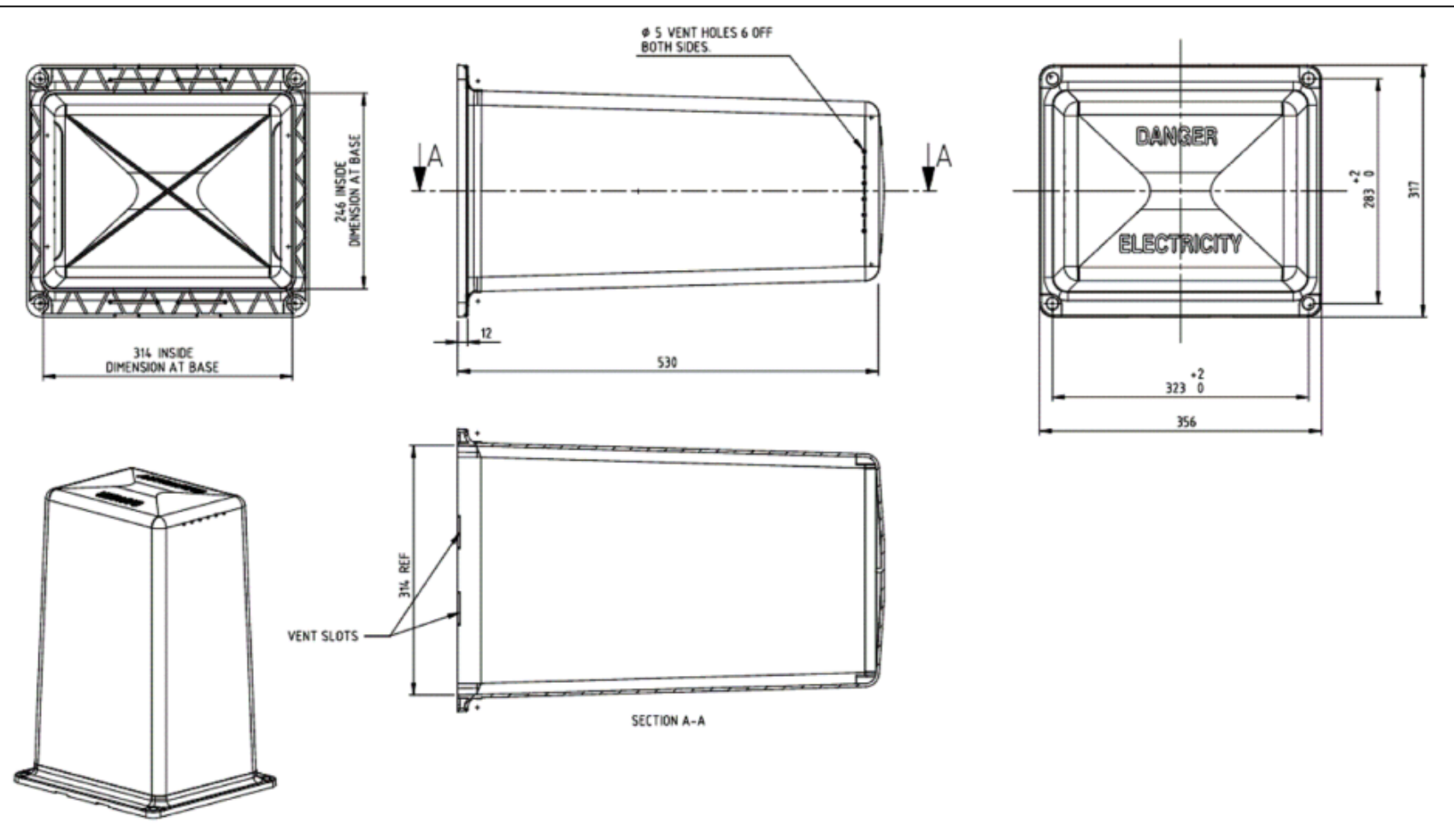



|     |                |          |    |     |     |     |                    |  |       |          |   |  |                |        |
|-----|----------------|----------|----|-----|-----|-----|--------------------|--|-------|----------|---|--|----------------|--------|
|     |                |          |    |     |     |     | DRAWN              |  | SHANE | 09.02.18 | <b>FIJI ELECTRICITY AUTHORITY</b><br><b>TECHNICAL SPECIFICATIONS FOR</b><br><b>PILLAR BOX</b> |  | DRAWING NUMBER |        |
|     |                |          |    |     |     |     | CHECKED            |  |       |          |   |  | A3             | 01     |
|     |                |          |    |     |     |     | CHIEF DRAUGHTSMAN  |  |       |          |   |  | E24            | 021(1) |
|     |                |          |    |     |     |     | TEAM LEADER        |  |       |          |   |  | SCALE          |        |
|     |                |          |    |     |     |     | DESIGN & PLANNING  |  |       |          |   |  | NTS            |        |
|     |                |          |    |     |     |     | ENGINEER           |  |       |          |   |  |                |        |
|     |                |          |    |     |     |     | HEAD OF DEPARTMENT |  |       |          |   |  |                |        |
| 0   | ORIGINAL ISSUE | 09.02.18 | SK |     |     |     |                    |  |       |          |   |  |                |        |
| No. | REVISION       | DATE     | BY | CHK | PSD | APP |                    |  |       |          |   |  |                |        |



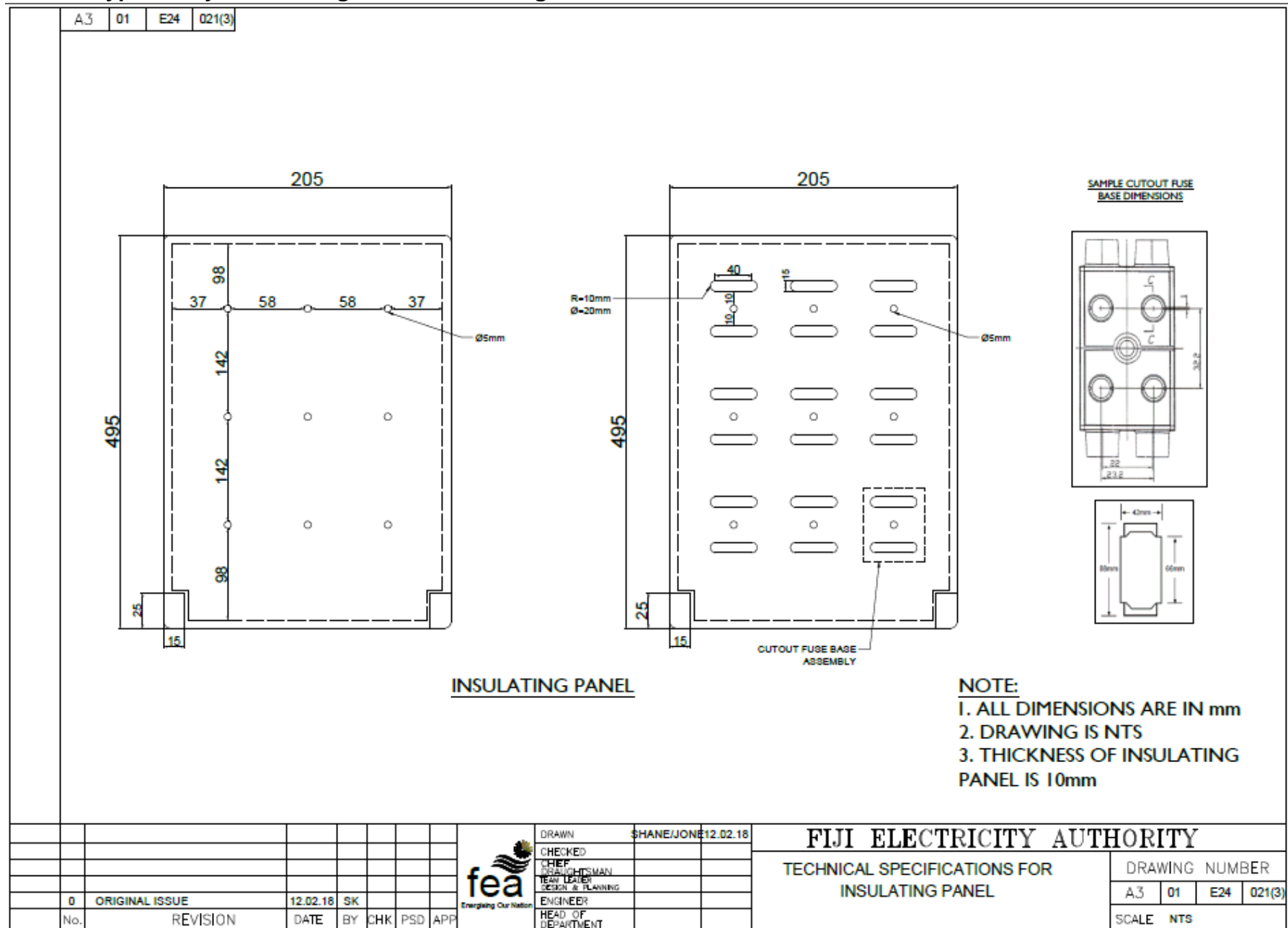
## 14.6 Typical Layout Drawing – Pillar Cover

A3 01 E24 021(2)



|  |     |                |          |    |     |     |     |   |  |       |          |                            |  |  |                |    |
|--|-----|----------------|----------|----|-----|-----|-----|---|--|-------|----------|----------------------------|--|--|----------------|----|
|  |     |                |          |    |     |     |     | <br><b>fea</b><br><small>Empowering Our Nation</small> | DRAWN  | SHANE | 09.02.18 | FIJI ELECTRICITY AUTHORITY |  |  |                |    |
|  |     |                |          |    |     |     |     |   | CHECKED  |       |          |                            | TECHNICAL SPECIFICATIONS FOR<br>PILLAR BOX |  | DRAWING NUMBER |    |
|  |     |                |          |    |     |     |     |   | CHIEF<br>DRAUGHTSMAN<br>TEAM LEADER<br>DESIGN & PLANNING |       |          |                            |  |  | A3             | 01 |
|  | 0   | ORIGINAL ISSUE | 09.02.18 | SK |     |     |     |   | ENGINEER   |       |          |                            | SCALE NTS                                  |  |                |    |
|  | No. | REVISION       | DATE     | BY | CHK | PSD | APP |   | HEAD OF<br>DEPARTMENT                                    |       |          |                            |  |  |                |    |

## 14.7 Typical Layout Drawing – Pillar Insulating Panel



## TENDER CHECKLIST

***The Bidders must ensure that the details and documentation mention below must be submitted as part of their tender Bid***

Tender Number \_\_\_\_\_

Tender Name \_\_\_\_\_

1. Full Company / Business Name: \_\_\_\_\_

**(Attach copy of Registration Certificate)**

2. Director/Owner(s): \_\_\_\_\_

3. Postal Address: \_\_\_\_\_

4. Phone Contact: \_\_\_\_\_

5. Fax Number: \_\_\_\_\_

6. Email address: \_\_\_\_\_

7. Office Location: \_\_\_\_\_

8. TIN Number: \_\_\_\_\_

**(Attach copy of the VAT/TIN Registration Certificate - Local Bidders Only (Mandatory))**

9. FNPF Employer Registration Number: \_\_\_\_\_ **(For Local Bidders only) (Mandatory)**

10. **Provide a copy of Valid FNPF Compliance Certificate (Mandatory- Local Bidders only)**

11. **Provide a copy of Valid FRCS (Tax) Compliance Certificate (Mandatory Local Bidders only)**

12. **Provide a copy of Valid FNU Compliance Certificate (Mandatory Local Bidders only)**

13. Contact Person: \_\_\_\_\_

I declare that all the above information is correct.

Name: \_\_\_\_\_

Position: \_\_\_\_\_

Sign: \_\_\_\_\_

Date: \_\_\_\_\_

## **Tender submission**

Bidders are requested to upload electronic copies via Tender Link by registering their interest at: <https://www.tenderlink.com/efl>

**EFL will not accept any hard copy submission to be dropped in the tender box at EFL Head Office in Suva.**

**This tender closes at 4.00pm (1600hrs) on Wednesday 9<sup>th</sup> April, 2025.**

For further information or clarification please contact our Supply Chain Office on phone **(+679) 3224360 or (+679) 9992400** or email us on [tenders@efl.com.fj](mailto:tenders@efl.com.fj)

**The bidders must ensure that their bid is inclusive of all Taxes payable under Fiji Income Tax Act. Bidders are to clearly state the percentage of VAT that is applicable to the bid prices.**

The lowest bid, will not necessarily be accepted as the successful bid.

**The Tender Bids particularly the “Price” must be typed and not hand written.**

**Any request for the extension of the closing date must be addressed to EFL in writing three (3) working days prior to the tender closing date.**

**Tender Submission via email or fax will not be accepted.**