

# EIPGRID INTRODUCTION

---

References and Insights



September, 2023



# INTRODUCTION

---

# EIPGRID global business status



EIPGRID provides DERs operation & monitoring services to overseas power companies and utilities through VPP platform 'EIP'. Since 2016, we have been providing services mainly for the Japanese and Southeast Asian markets, and we are preparing to enter the European market following our recent entry into the US market. Based on our stable & durable services to global customers, we are preparing to commercialize AI-based EaaS\* targeting the domestic market. (EaaS : Energy-as-a-Service)

  
**SECURE VPP**  
ENERGY EFFICIENCY WITH VIRTUAL POWER PLANTS




  
intertrust  
Secure Virtual Power Plant for Telecom industry

  
SK E&S SK innovation LG Chem SAMSUNG SDI  
Battery cell-level data collection and monitoring

  
TIS  
Customization for the Japanese energy market

  
GRID SYSTEM OPERATOR  
EIPGRID Virtual Power Plant is Malaysia's Grid System Operator's choice

  
rainforest  
Scalable EV Charge-management Solution in North America

  
Read  
Thailand's Metropolitan and Provincial energy providers chose EIPGRID technology

## EIPGRID signs MoU with Naresuan University for co-establishing a Virtual Smart Grid Lab



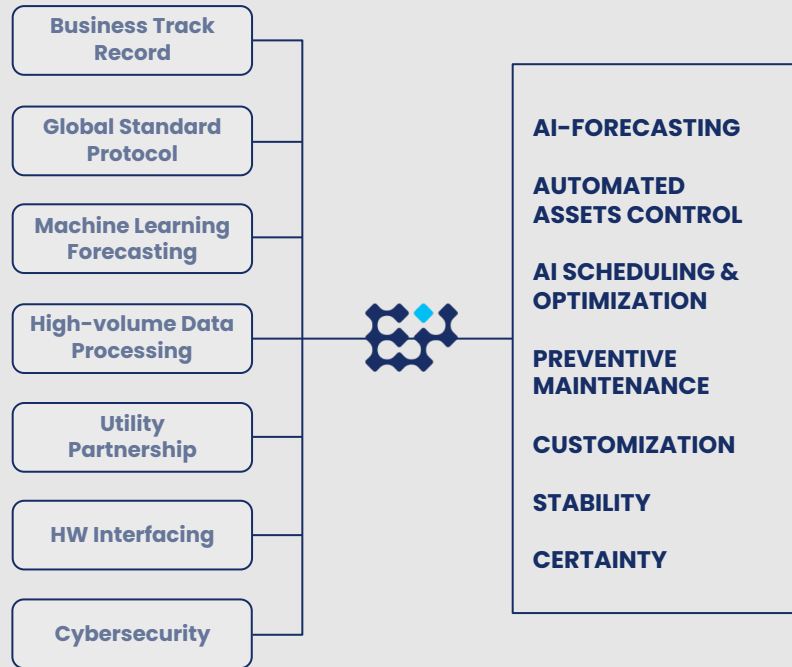
Jun 29, 2023

EIPGRID, a leading energy community service and solutions provider, specializing in the Virtual Power Plant domain, signed a Memorandum of Understanding (MoU) with Naresuan University's School of Renewable Energy and Smart Grid Technology



## EIP BUSINESS STRENGTH AND CAPABILITIES

- In the Energy Business since 2010
- Developed Korea's first Automated Demand Response Management System
- Extended areas of application
  - Distributed Energy Resources Management, Battery ESS Management, Micro-Grid, Virtual Power Plant, Vehicle to Grid, all combined into a single platform
- Overseas footprint
  - Reaching Japan, Southeast Asia, Europe, North America
- Carbon Credits (Soon)
- Carbon Credit trading (Carbon Metering)



## UTILITIES

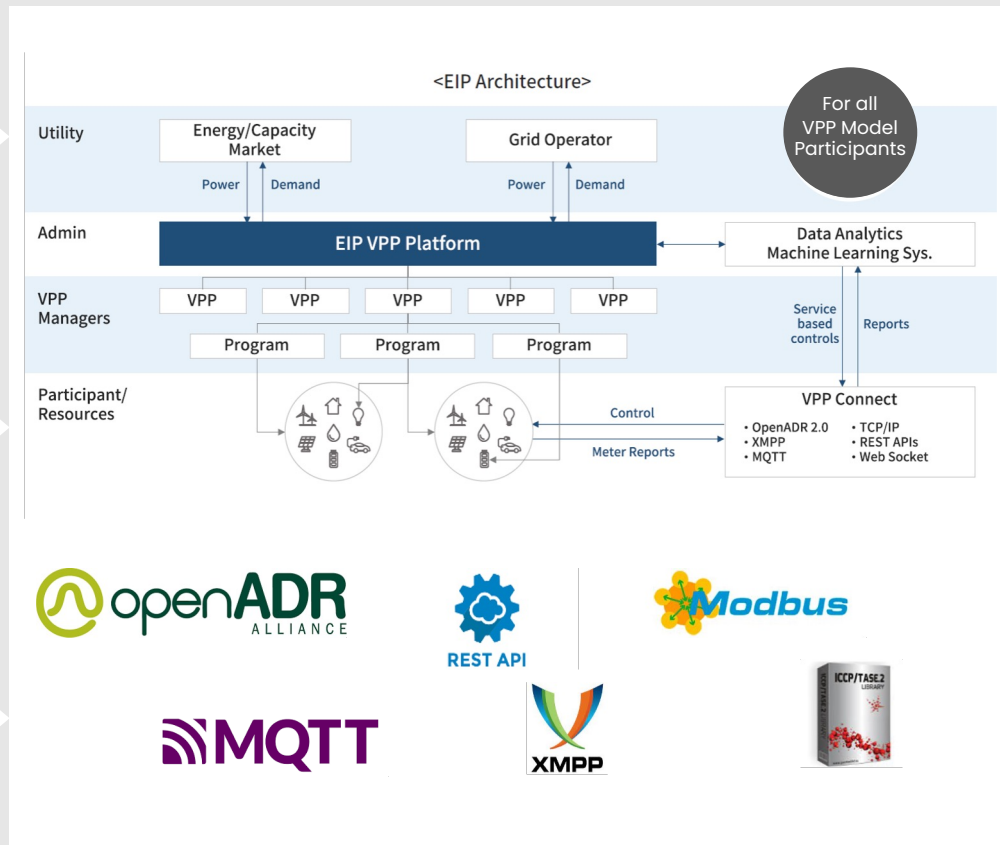
- Stabilize the grid 24/7 by leveraging data collection and AI to offset the variability of renewables
- Offer incentive programs to users who help balancing the grid through load curtailling or capacity supply

## AGGREGATORS

- Help communities monetize their energy assets and participate in their local energy market
- Act as a gateway between the grid and the communities and support end-users earning incentives

## COMMUNITY MANAGERS

- Monitor, operate and manage renewable energy assets in one or multiple communities
- Promote generation and use of affordable and low carbon electricity to households, commercials and industrials





## EIP Client BOX

Interfacing & communicating between the EIP platform and on-site edge devices. Collects & controls data from edge devices using various and heterogeneous protocols, and can be provided as hardware or software

## IoT – Telenor Connexion

Partnership with one of the world's top telecommunication and IoT companies for smooth communication between the devices and system anywhere in the world



## DEMAND RESPONSE

### ■ Grid Balance

- Utilities maintain stable power grid, and LA/resource owners earn incentives by participating in DR programs

### ■ DER Management

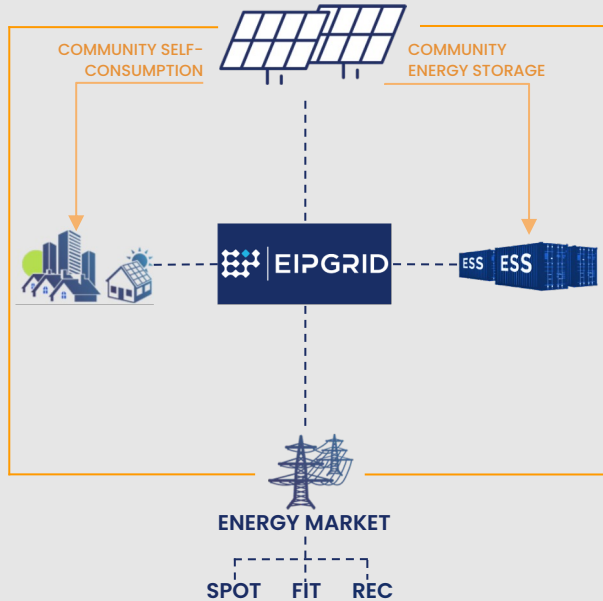
- Operation and management of diverse energy resources with real-time monitoring

### ■ AI Portfolio

- Automated forecast and scheduling based on user's energy consumption pattern and grid status

### ■ Automated DRMS

- DR Management System fully customized and tailored to local market rules
- User friendly design : utilities and LA can directly manage participants joining their DR programs



## PV MANAGEMENT

Precise Load & Gen Forecasting, Curtailment, Defect Detection, Interoperating Energy Storage

### ■ Smart Control

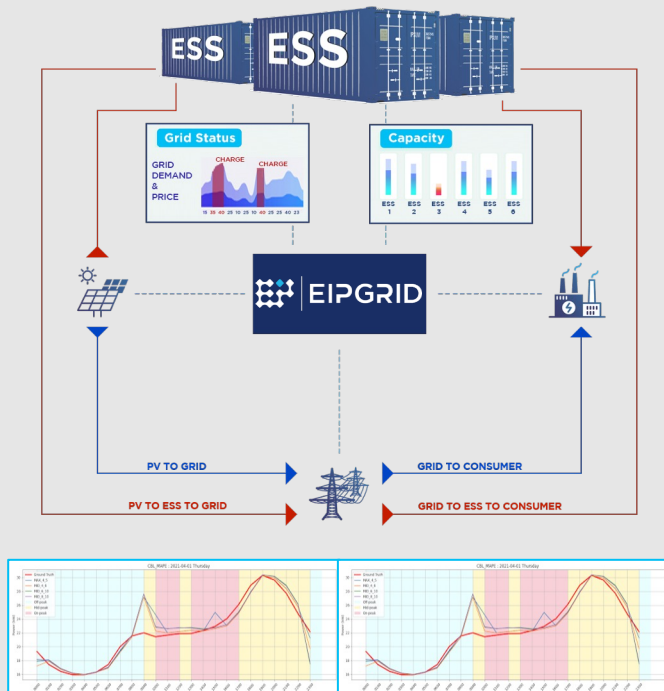
- Control over community energy usage with efficient management of PVs scattered across the community area

### ■ Defect Detection

- Defect detection feature scans and detects any possible issue on any of the PV in the PV farm and alerts the operator if any abnormality is found

### ■ Energy Storage

- Energy generated through the PVs can be stored and managed with our market-leading ESS management system for smarter energy storage and consumption.



## ESS MANAGEMENT

### ■ Scheduling

- Schedule charging according to the market grid status, their own electricity usage pattern, and load capacity.

### ■ Anomaly Detection

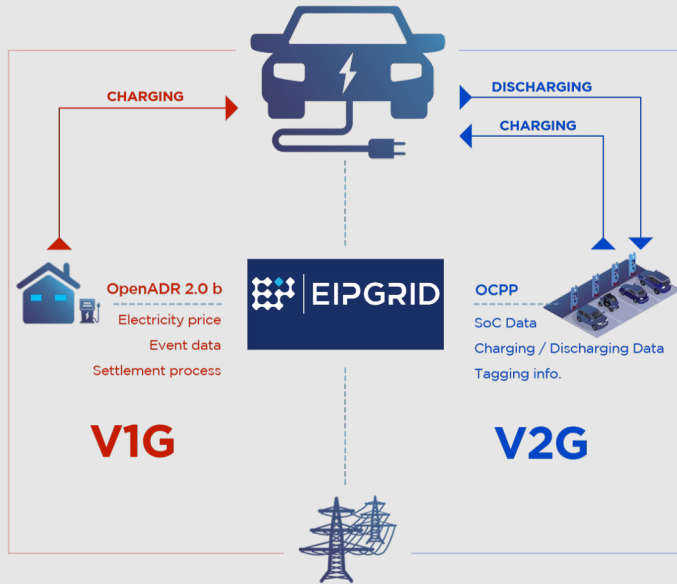
- Detect changes in the battery cell's temperature, voltage, current, etc. as well as any unusual access to the system

### ■ TSDP – Time Series Database Technology

- Real-time unstructured big data is collected, curated and structured for efficient and precise analysis and performance tracking

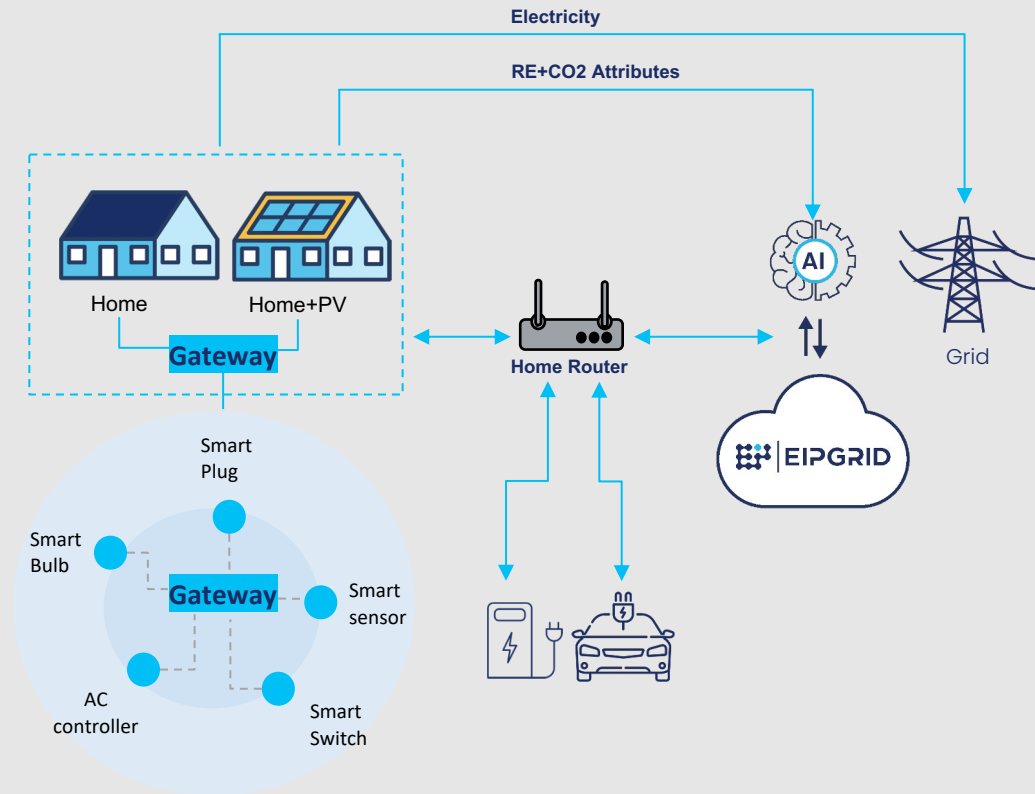
### ■ System Integration

- Long track-record of projects with the world's top battery and ESS manufacturers (SK Innovation, SAMSUNG SDI, LG Chem)
- ESS coupling with PV solar and/or consumption site



## EV MANAGEMENT

- **Charging according to the grid's demand**
  - Earn incentives by charging according to the grid
- **V1G - Smart Charging**
  - Remote EV charging time and speed control
- **V2G - Connect to the EV charging station**
  - Participate in DR program and earn incentives by charging according to the grid demand and electricity rate
- **V2G Energy Flexibility Verification through Gamification Incentive Model**
  - Integrated operation technology to support DR and auxiliary service complex market using DR resources including Gamification-based V2G resources
  - Validation of commercialization and operation of platform, operating system, and consumer participation technology



## HOME/BUILDING ENERGY MANAGEMENT

### ■ HEMS/BEMS Control System

- Energy Management
- Monitoring & Control
- Participation in energy programs
- Reduction of electricity bills
- Data Aggregation
- Logging
- Alarm Control

### ■ Smart Devices & Appliances

- Smart plugs & cables
- Temperature Controller
- Smart AC or AC Controller
- EV Charging Point
- Alarm Control

## PV GENERATION BM

## GRID-OPERATION BM



## V2G BM

## 100K-CLASS BIG DATA SMART CITY PROJECT

AMI on

**3M** industrial sites + **300k** households

Transmission / Distribution / Substation Data  
Environment / Life / Internet service Data

## VPP API REFERENCE

HTTPS

Swagger

GET /rest/v1/events/{eventId}

GET /rest/v1/programs/{programId}/control/live

GET /sp/inverter/{inverter\_id}/history

GET /sp/{id}/predict/day2


## LARGE OPEN API LIBRARY

**100** Plant/Gov. Open APIs

**730** Platform based Open APIs

Public Open APIs target  
Swagger-based document

## EIPGRID DARE Data Services



### Analyze

**D1 | Data analysis server**

Quick and accurate energy data assessment and analysis for checking the data consistency (CBL, RRMSE)


[Learn more](#)

### Forecast

**D2 | Decision Dynamics**

A set of AI tools for real-time model training & serving for most optimal and profitable energy decisions

[Learn more](#)



### Visualize

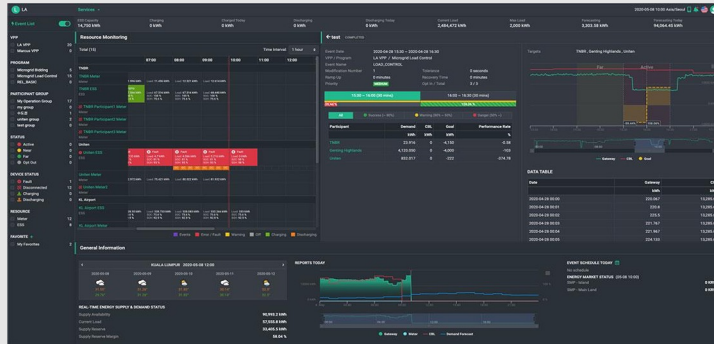
**D3 | Data Discovery Den**

Energy data visualization with shareable reports connected to various data sources and real-time updates

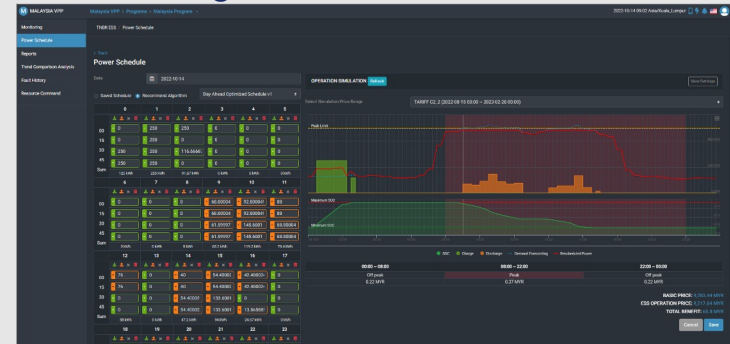
[Learn more](#)

- **D 1 Data Analysis Server**
  - Quick & Accurate Energy Data Analysis
  - CBL and RRMSE
- **D 2 Decision Dynamics**
  - Time Series Forecasting
  - Advanced Predictive AI
  - Optimal and Profitable Energy Decisions
- **D 3 Data Discovery Den**
  - Dynamic Visualization
  - Actionable Time Series Energy Insights
  - Time Series Chart Editor and Interactive Report

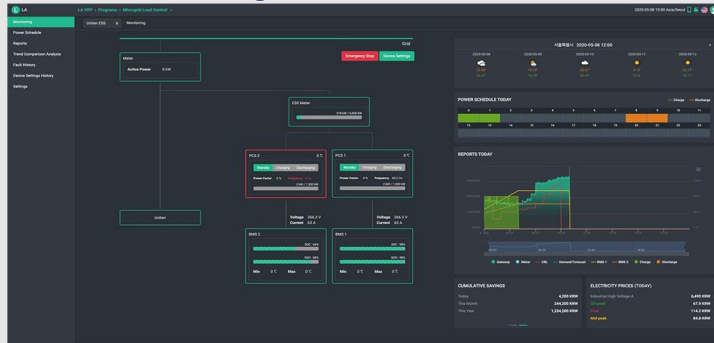
## EIP Platform Dashboard



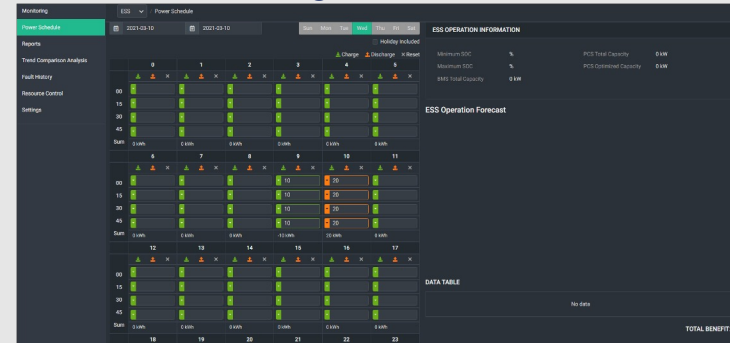
## Forecasting



## ESS Monitoring



## Smart Scheduling





# DATA AGGREGATION & REFERENCES

---

**20**  
sites

**ESS**  
740 MWh



**3** battery providers

**6** PMS providers

**718**  
sites

**PV**  
650 MWp



incl. VPP participation

**4** power generators

**700**  
sites

**DR**  
2.1 GW



**1000** participants

**7** Aggregators / utilities



## SOUTH KOREA

**650 MWh** capacity

**16** sites

Cell level monitoring for fault detection and prevention



## MALAYSIA

**4.38 MWh** capacity

**4** sites

Peak cut / DR / Frequency Regulation



## SOUTH KOREA

**92 MWh** capacity

**170** sites

Monitoring, operation & aggregation remotely



## SOUTH KOREA

**1,000** participants

**2.1 GW** capacity

DR program

## THAILAND

**3,000** participants

**45 MW** capacity

Automated DR Operating System  
development



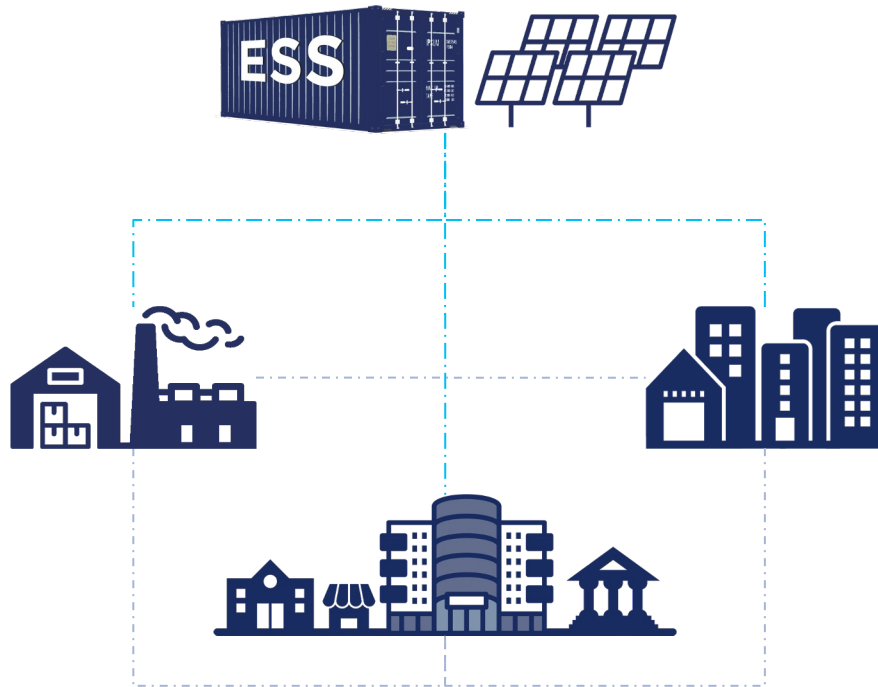
## JAPAN <sup>\*confidential</sup>

**1,200** participants

**4** utilities

Customized DR Management System  
development

## VIETNAM MICROGRID FOR ENERGY MANAGEMENT AT AN INDUSTRIAL COMPLEX



### Participants and resources

Manufacturing plants

Households

Commercial buildings

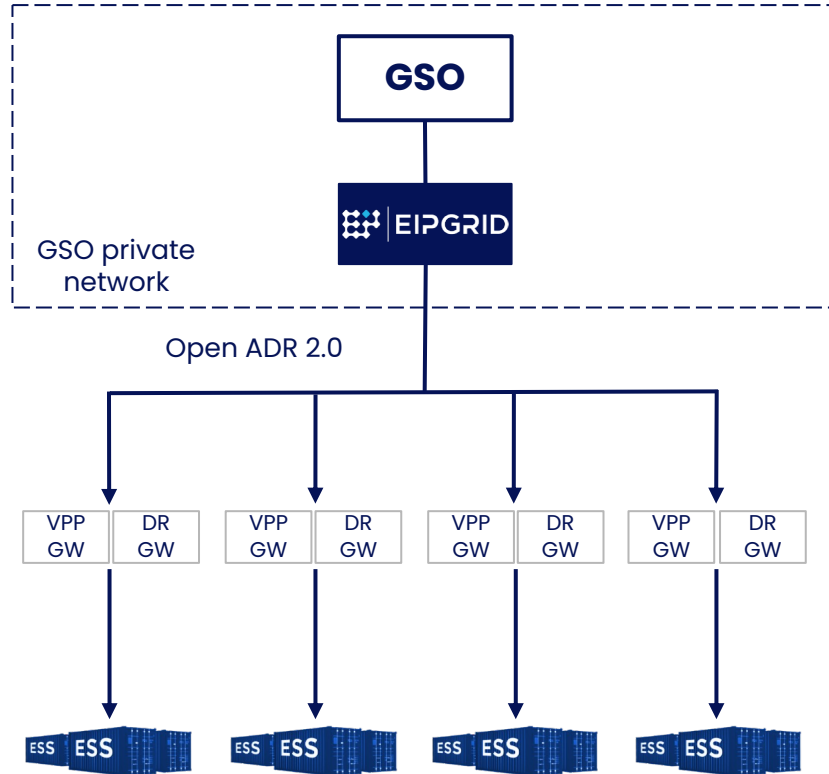
Solar PV + Battery ESS

### Real-time Energy Management

Real time power demand monitoring

On-site energy production, storage and consumption

Demand balancing and energy trading between sites



## MALAYSIA - BATTERY ESS OPERATION & MONITORING

**24/7** operation with  
**Real-time** monitoring with Data backup

**AI-powered** daily forecast & load scheduling

**Automated** Peak-cut, energy arbitrage, demand-response

Emergency reaction time **<2 sec**

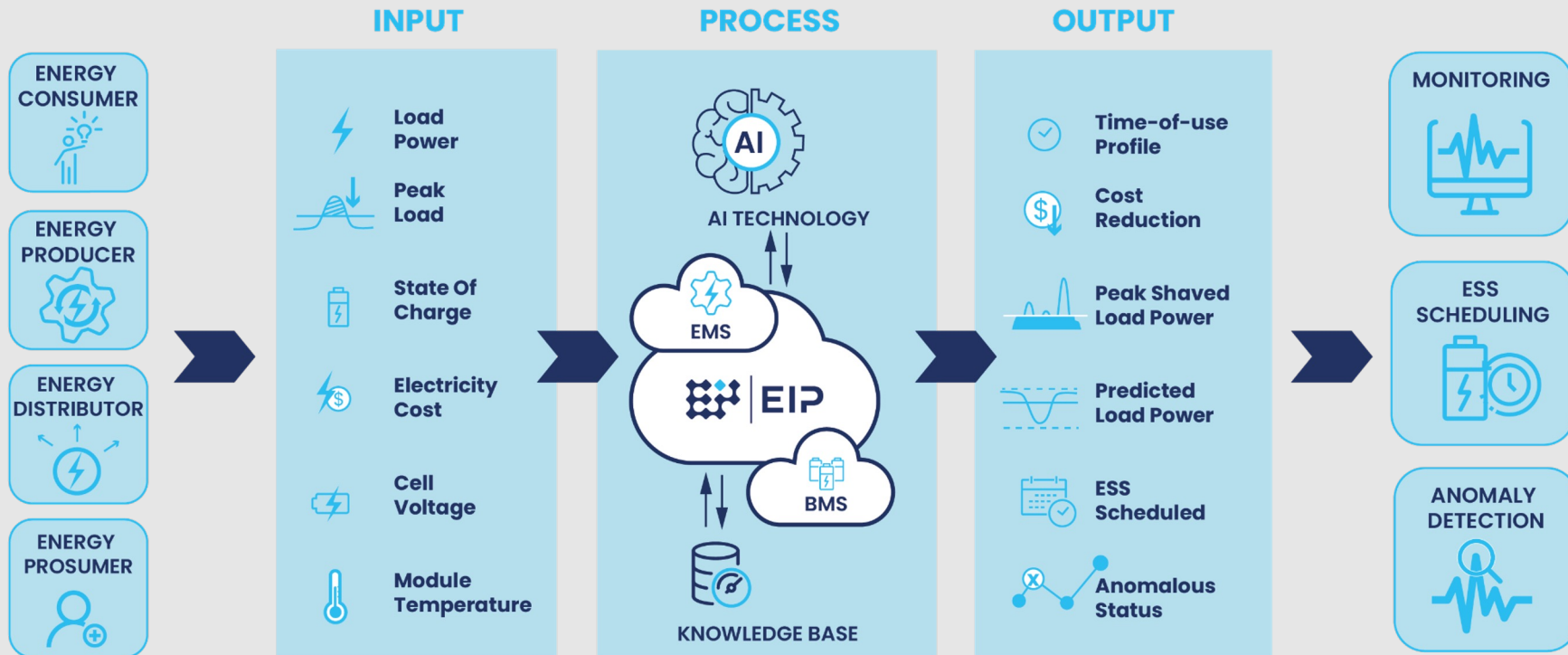


**Smooth operations**  
In difficult environments

## STAKEHOLDERS

## ESS SCHEDULER & ANOMALY DETECTION

## SERVICES



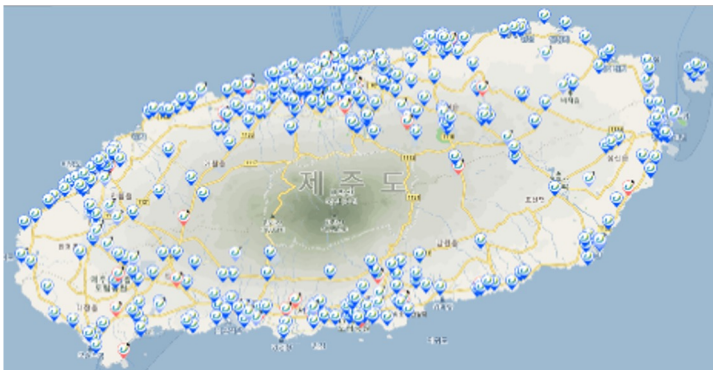
## JEJU ISLAND - VEHICLE-TO-GRID

**91** electric vehicles

- VIG / V2G operation
- Real time grid balancing

**527** chargers

- Push notification System
- Gamification model + participant reward

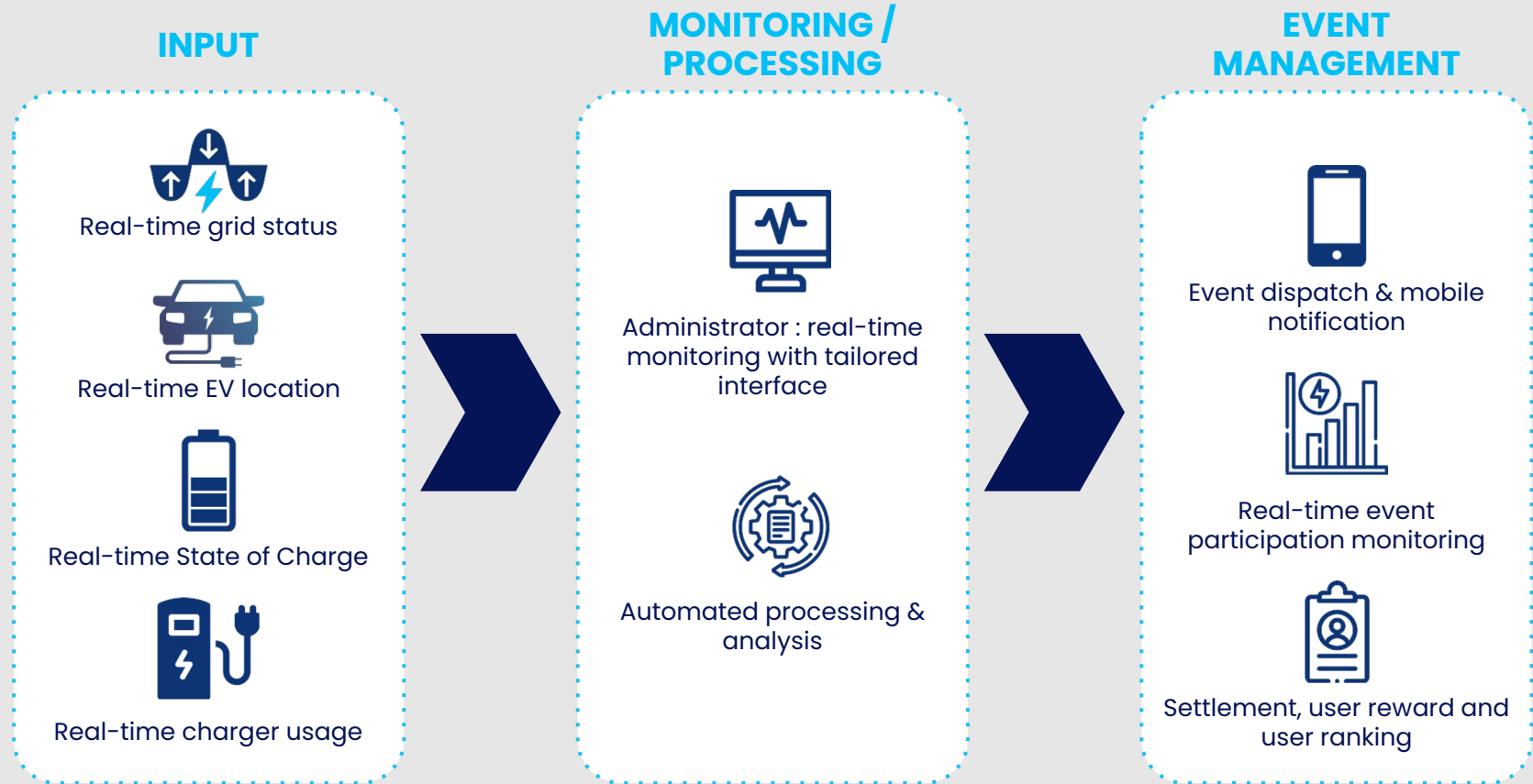


## Infrastructure for real-time monitoring & management

- Grid status : power load and generation
- EV : Real-time location & battery SOC
- Charging station : Real-time usage status

## Focus on user experience and user retention

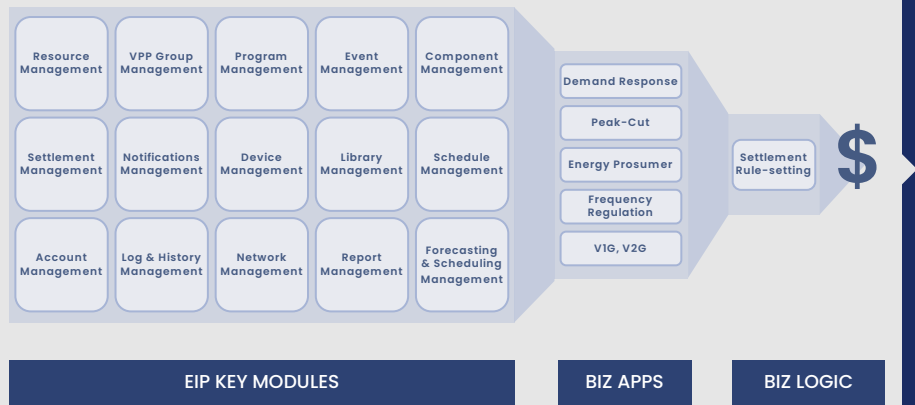
- Event dispatch to user through mobile notification
- Gamification model based on event participation : point reward system, quiz, lotto, user ranking
- User behavior analysis + user satisfaction survey





# EIP MONETIZATION TOOLS

---



## RESOURCE MANAGEMENT WITH PROFIT MAXIMIZATION

- Efficient resource management through different operation simulations
- Select customized plans just for your platform

## CUSTOMIZE YOUR BUSINESS UTILIZING EIP CORE MODULES

- Add modules to the platform as your business portfolio develops
- Development costs lowered substantially

CLIENTS				PARTNERS
Private	GS Caltex Rockwell Automation	kt SK E&S	posco 포스코DX & Others (confidential)	intertrust® rainforest automation KTGCC
SI & Engineering	TIS TIS INTEC Group	GUNKUL not only the energy, we care	DOOSAN	NECTEC a member of NSTDA BlackRidge TECHNOLOGY
Utilities & energy operators	Busan city gas   SK E&S GRID SYSTEM OPERATOR KPX 전력거래소 KOREA POWER EXCHANGE TENAGA NASIONAL	eMotorWerks An Enel Group Company 한국전력공사 KORAE ELECTRIC POWER CORPORATION PEA POTENTIAL ENERGY AUTHORITY TNB RESEARCH	ADVANTAGE Kdn KEPCO KDN การไฟฟ้านครหลวง Metropolitan Electricity Authority	telenor   connexion SGTech School of Renewable Energy and Smart Grid Technology Naresuan University kx amazon web services 경희대학교 KYUNG HEE UNIVERSITY

# LET'S CONNECT!

---



 [doniyor@eipgrid.com](mailto:doniyor@eipgrid.com)

 [eipgrid.com](http://eipgrid.com)

 [company/eipgrid](https://www.linkedin.com/company/eipgrid)

 [@eipgrid](https://twitter.com/eipgrid)

 | energize our life

 x  | eipgrid