

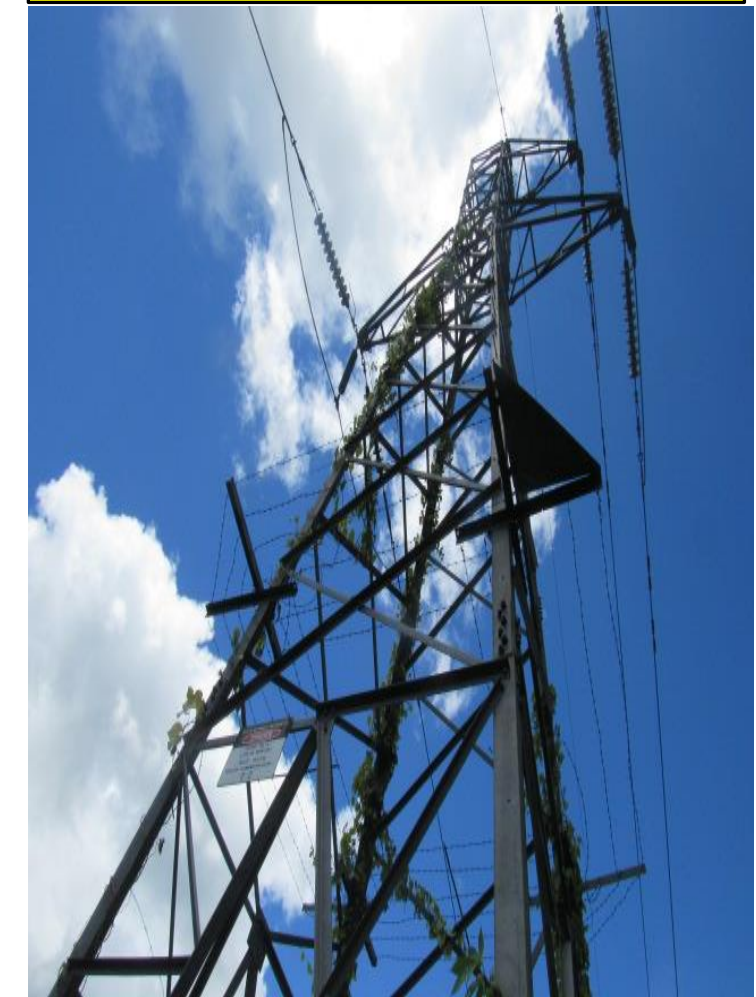


Tower ID	WAI-CUN-A002	
Contract	S30L-3	
Legs	+/-0 , +/-0, 1, 3	
Insulator Type	Composite/Poercelain	
Earth Wire	Installed	
Tower Area m <sup>2</sup>	121	
Rust m <sup>2</sup>	3	2%
Sweep m <sup>2</sup>	74	61%

Anti-Climb Fitted	Installed
Padlock Type	Bolt
Vegetation Control	Required
Environmental Rating	Nil
Vehicle Access	No Vehicle access
Property Usage	Jungle
Foundation Type	Concrete
Cell Coverage	Average
Earth Plate Fitted	N/A

- Havy Moss and mold on lower leg sections.
- Gey Paint 1 meter above ground Level on Legs
- Vines Growing Up structue into the Upper Body
- CA Data
- Heavy Moss on Insulators

WAI-CUN-A002



LANDOWNER DETAILS	
Property Owner	Refer to EFL for details
Tower Access	
Contact	
Contact Number	

INSPECTION TEAM		Date
LINETECH CONSULTING		7/03/2018
Inspector 1	Tim Greenhill	
Inspector 2		
Draft Report	T Greenhill	
Report Review	R Glover	

GPD COORDINATES (WGS84)	
LATITUDE	17°44'27.92"S
LONGITUDE	178° 6'23.67"E

PREVIOUSLY PAINTED	
PAINTED	Nil
PAINT TYPE	
AGE	



Wailoa-Cunningham	
Work Scope Assessment Report - September 2017	

DRG. SIZE	SCALE	FOLDER
A3	N/A	CAP13041
WID		SHEET
		REVISION
1	2	
WAI-CUN-A002		

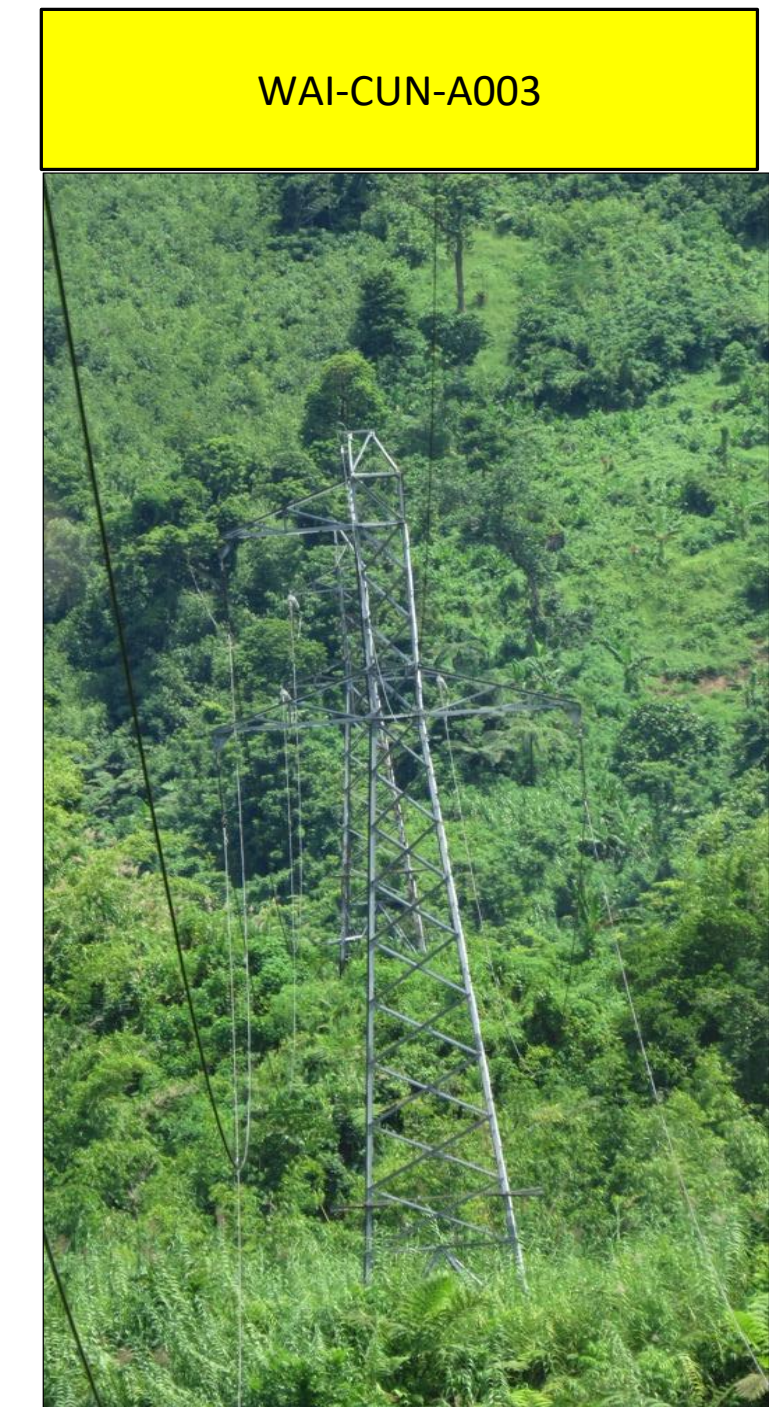




Tower ID	WAI-CUN-A003	
Contract	HSL-3	
Legs	+/-0 , 1, 1, +/-0	
Insulator Type	Composite	
Earth Wire	Installed	
Tower Area m <sup>2</sup>	120	
Rust m <sup>2</sup>	6	5%
Sweep m <sup>2</sup>	86	72%

Anti-Climb Fitted	Installed
Padlock Type	Bolt
Vegetation Control	Required
Environmental Rating	Nil
Vehicle Access	No Vehicle access
Property Usage	Jungle
Foundation Type	TSC
Cell Coverage	Marginal
Earth Plate Fitted	N/A

- Heavy Moss and Mold on Lower Sections of the Structure
- Missing Step bolt in the Upper Body



LANDOWNER DETAILS		INSPECTION TEAM		Date	GPD COORDINATES (WGS84)		PREVIOUSLY PAINTED		Wailoa-Cunningham				
Property Owner	Refer to EFL for details	Inspector 1	Beau Tuheke	21/03/2018	LATITUDE	17°44'28.53"S	PAINTED	Nil	DRG. SIZE	SCALE	FOLDER		
Tower Access		Inspector 2	Gavin Hancox		LONGITUDE	178° 6'36.79"E	PAINT TYPE		A3	N/A	CAP13041		
Contact		Draft Report	T Greenhill				AGE		WID		SHEET		
Contact Number		Report Review	R Glover								1		
											2		
										Work Scope Assessment Report - September 2018		WAI-CUN-A003	





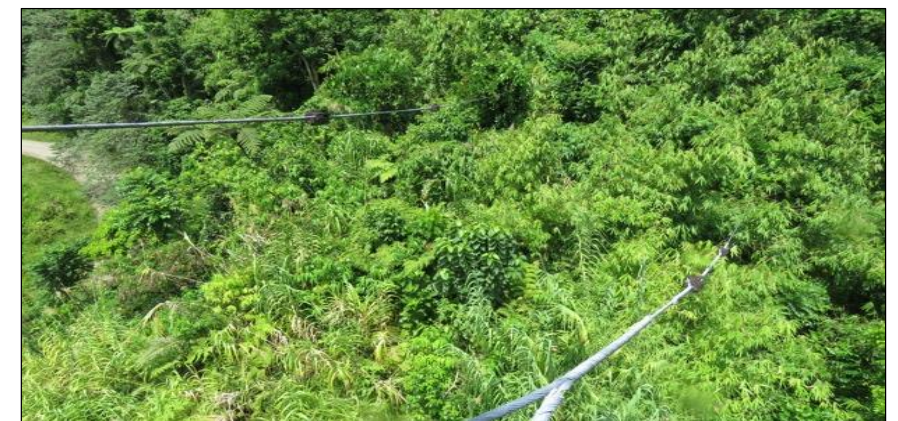


Tower ID	WAI-CUN-A003A	
Contract	S30L-3	
Legs	+/-0 , 1, 1, 2	
Insulator Type	Composite/Porcelian	
Earth Wire	Installed	
Tower Area m <sup>2</sup>	121	
Rust m <sup>2</sup>	4	3%
Sweep m <sup>2</sup>	84	69%

Anti-Climb Fitted	Installed
Padlock Type	Bolt
Vegetation Control	Required
Environmental Rating	Nil
Vehicle Access	No Vehicle access
Property Usage	Jungle
Foundation Type	SAC
Cell Coverage	Marginal
Earth Plate Fitted	N/A

- Guy Wire Attached in the Body on B and C leg
- Heavy Moss and Mold on lower section of Structure.

- **CA Data**
- Heavy Surface Corrosion on Sag links
- Insulators Heavy Moss and Mold
- Old Style dampers Installed



WAI-CUN-A003A

LANDOWNER DETAILS		INSPECTION TEAM		Date	GPD COORDINATES (WGS84)		PREVIOUSLY PAINTED		Wailoa-Cunningham				
Property Owner	Refer to EFL for details	Inspector 1	Beau Tuheke	21/03/2018	LATITUDE	17°44'28.91"S	PAINTED	Nil	DRG. SIZE	SCALE	FOLDER		
Tower Access		Inspector 2	T Greenhill		LONGITUDE	178° 6'51.20"E	PAINT TYPE		A3	N/A	CAP13041		
Contact		Draft Report	R Glover				AGE		WID		SHEET		
Contact Number		Report Review									1		
											2		
										Work Scope Assessment Report - September 2018		WAI-CUN-A003A	







<b>Tower ID</b>	WAI-CUN-A004
<b>Contract</b>	STL+-0
<b>Legs</b>	-1, 1, 1, +/-0
<b>Insulator Type</b>	Composite/Porcelain
<b>Earth Wire</b>	Installed
<b>Tower Area m<sup>2</sup></b>	165
<b>Rust m<sup>2</sup></b>	2      1%
<b>Sweep m<sup>2</sup></b>	118    72%



<b>Anti-Climb Fitted</b>	Installed
<b>Padlock Type</b>	Bolt
<b>Vegetation Control</b>	Required
<b>Environmental Rating</b>	Nil
<b>Vehicle Access</b>	No Vehicle access
<b>Property Usage</b>	Jungle
<b>Foundation Type</b>	Concrete
<b>Cell Coverage</b>	Average
<b>Earth Plate Fitted</b>	N/A

## WAI-CUN-A004



- Aerial Id Installed on Structure
- 40 M16 Tower Bolts R/C
- Tower Requires Vegetation Control
- **CA Data**
- Heavy Moss and mold on Insulators
- Heavy Surface Corrosion on Sag links
- Holding Plate Bolts R/C all Phases (6 Each Phase)



LANDOWNER DETAILS		INSPECTION TEAM		Date	GPS COORDINATES (WGS84)	PREVIOUSLY PAINTED			Wailoa-Cunningham		DRG. SIZE	SCALE	FOLDER
Property Owner	Refer to EFL for details	Inspector 1	Beau	27/03/2018	LATITUDE 17°44'29.17"S	PAINTED	Nil			WID	A3	N/A	CAP13041
Tower Access		Inspector 2	Gavin		LONGITUDE 178° 6'59.98"E	PAIN TYPE		SHEET					
Contact		Draft Report	T Greenhill			AGE		1		2			
Contact Number		Report Review	R Glover					WAI-CUN-A004					

Work Scope Assessment Report - September 2018





Tower ID	WAI-CUN-A005	
Contract	S30L-3	
Legs	+/-0, -1, 1, +/-0	
Insulator Type	Porcelain	
Earth Wire	Installed	
Tower Area m <sup>2</sup>	112	
Rust m <sup>2</sup>	5	4%
Sweep m <sup>2</sup>	79	71%

Anti-Climb Fitted	Installed
Padlock Type	Bolt
Vegetation Control	Required
Environmental Rating	Nil
Vehicle Access	No Vehicle access
Property Usage	Jungle
Foundation Type	SAC
Cell Coverage	Average
Earth Plate Fitted	N/A

- 15 M16 Tower Bolts R/C
- Needs Vegetation Control
- CA Data
- Heavy Surface Corrosion on Sag links.
- Holding Plate Bolts R/C (5 on Yellow Phase)
- Holding Plate Bolts R/C (2 on Red and Blue Phase)



LANDOWNER DETAILS		INSPECTION TEAM		Date	GPD COORDINATES (WGS84)		PREVIOUSLY PAINTED		Wailoa-Cunningham				
Property Owner	Refer to EFL for details	Inspector 1	Beau Tuheke	26/03/2018	LATITUDE	17°44'38.01"S	PAINTED	Nil	DRG. SIZE	SCALE	FOLDER		
Tower Access		Inspector 2	T Greenhill		LONGITUDE	178° 7'12.12"E	PAINT TYPE		A3	N/A	CAP13041		
Contact		Draft Report	R Glover				AGE		WID		SHEET		
Contact Number		Report Review									1		
											2		
										Work Scope Assessment Report - September 2018		WAI-CUN-A005	



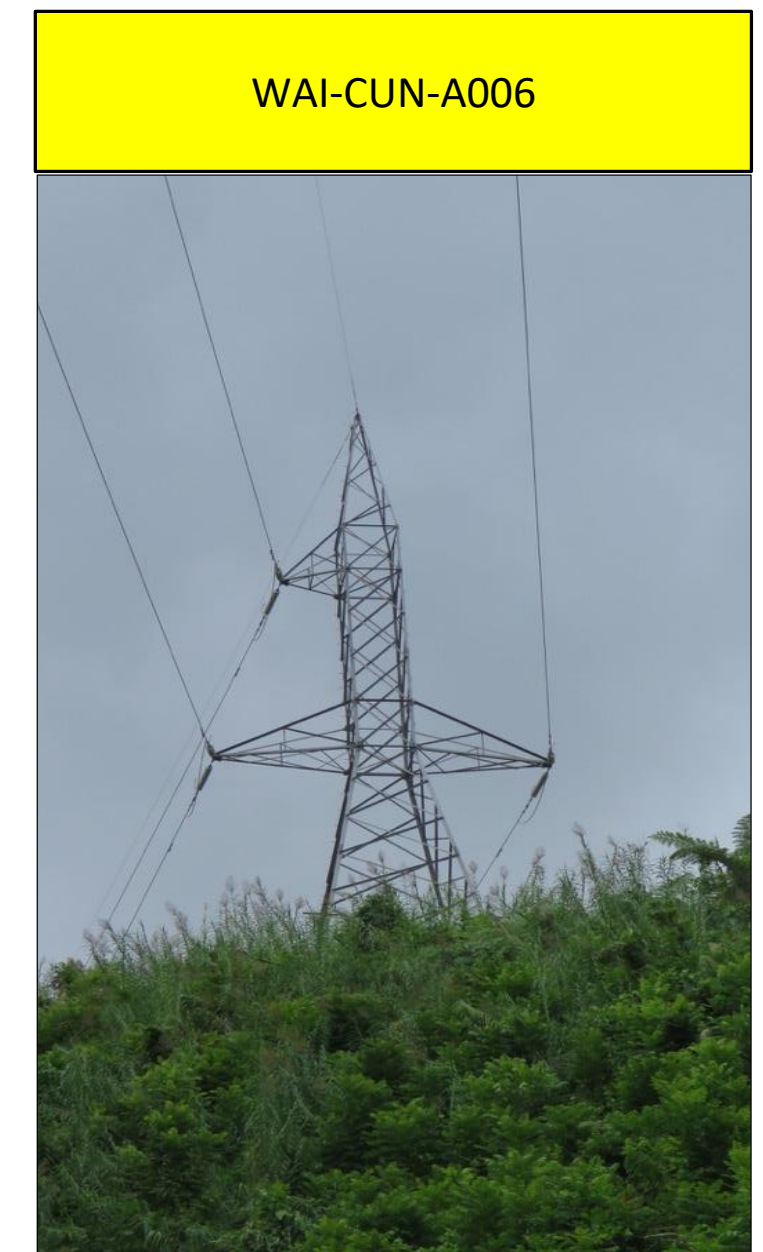




Tower ID	WAI-CUN-A006	
Contract	DGL-3	
Legs	2, 2, 1, 1	
Insulator Type	Porcelain	
Earth Wire	Installed	
Tower Area m <sup>2</sup>	161	
Rust m <sup>2</sup>	4	3%
Sweep m <sup>2</sup>	107	66%

Anti-Climb Fitted	Installed
Padlock Type	Bolt
Vegetation Control	Required
Environmental Rating	Nil
Vehicle Access	No Vehicle access
Property Usage	Jungle
Foundation Type	SAC
Cell Coverage	Average
Earth Plate Fitted	N/A

- Heavy Moss and Mold on the Base on the Structure
- 60 M16 Tower Bolts R/C.
- CA Data
- Surface Rust on Sag Links
- Heavy Moss and Mold on Insulators
- Holding Plate Bolts R/C on all Phases



<b>LANDOWNER DETAILS</b>		<b>INSPECTION TEAM</b>		Date	<b>GPD COORDINATES (WGS84)</b>		<b>PREVIOUSLY PAINTED</b>		<b>Wailoa-Cunningham</b>			DRG. SIZE	SCALE	FOLDER
Property Owner	Refer to EFL for details	Inspector 1	Beau Tuheke	27/03/2018	LATITUDE	17°44'52.13"S	PAINTED	Nil	Work Scope Assessment Report - September 2018			A3	N/A	CAP13041
Tower Access		Inspector 2	T Greenhill		LONGITUDE	178° 7'20.97"E	PAINT TYPE					WID		SHEET
Contact		Draft Report	R Glover				AGE					1		2
Contact Number		Report Review										WAI-CUN-A006		





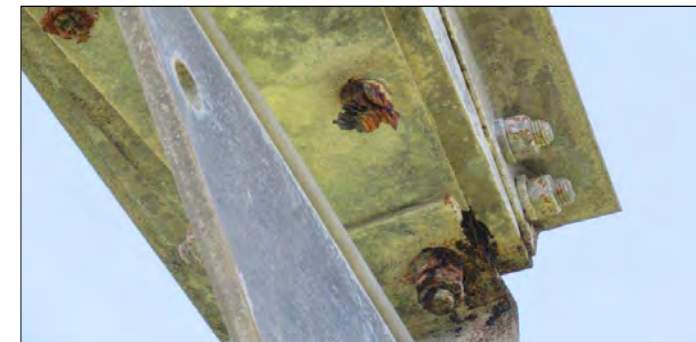



Tower ID	WAI-CUN-A086	
Contract	HSL+6	
Legs	3, 1, +/-, 1	
Insulator Type	Composite	
Earth Wire	Installed	
Tower Area m <sup>2</sup>	180	
Rust m <sup>2</sup>	7	4%
Sweep m <sup>2</sup>	137	76%

Anti-Climb Fitted	Installed
Padlock Type	Bolt
Vegetation Control	Required
Environmental Rating	Nil
Vehicle Access	No Vehicle access
Property Usage	Farming
Foundation Type	TSC
Cell Coverage	Marginal
Earth Plate Fitted	No

- Grey paint on legs 1-2m above ground level and on random bolts on tower
- Moss and mould on tower
- Anti-climb wire broken
- House 150m from B/C face
- Crops 100m from A-B face
- River 100m from A leg
- **CA Data**
- Holding plate bolts all phases R/C (24 in total)
- Through bolts not standard need a lock nut fitted
- Old style dampers R/C x 6
- M16 tower bolt R/C x 100
- Minor moss and mould on insulator

WAI-CUN-A086



LANDOWNER DETAILS		INSPECTION TEAM LINETECH CONSULTING		Date 21/06/2017	GPD COORDINATES (WGS84)		PREVIOUSLY PAINTED			Wailoa-Cunningham		DRG. SIZE A3	SCALE N/A	FOLDER CAP13041
Property Owner		Inspector 1	Wilson Nahi		LATITUDE	17°54'27.43"S	PAINTED	Nil		<b>WID</b> Work Scope Assessment Report - September 2017	SHEET	1	REVISION	2
Tower Access		Inspector 2			LONGITUDE	178°20'20.18"E	PAINT TYPE							
Contact		Draft Report			AGE									
Contact Number		Report Review												
										WAI-CUN-A086				