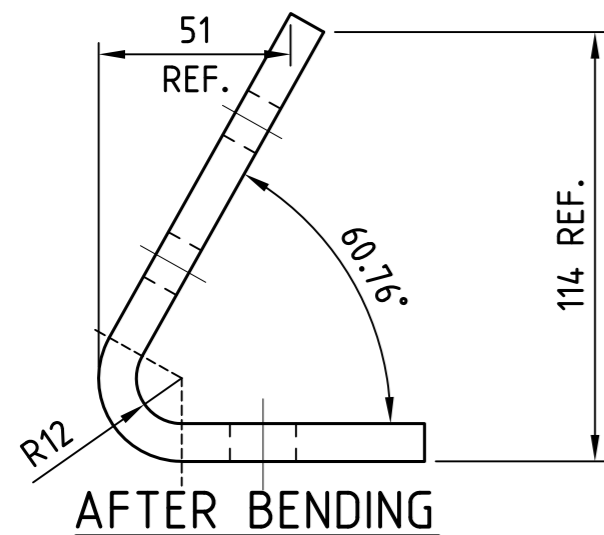
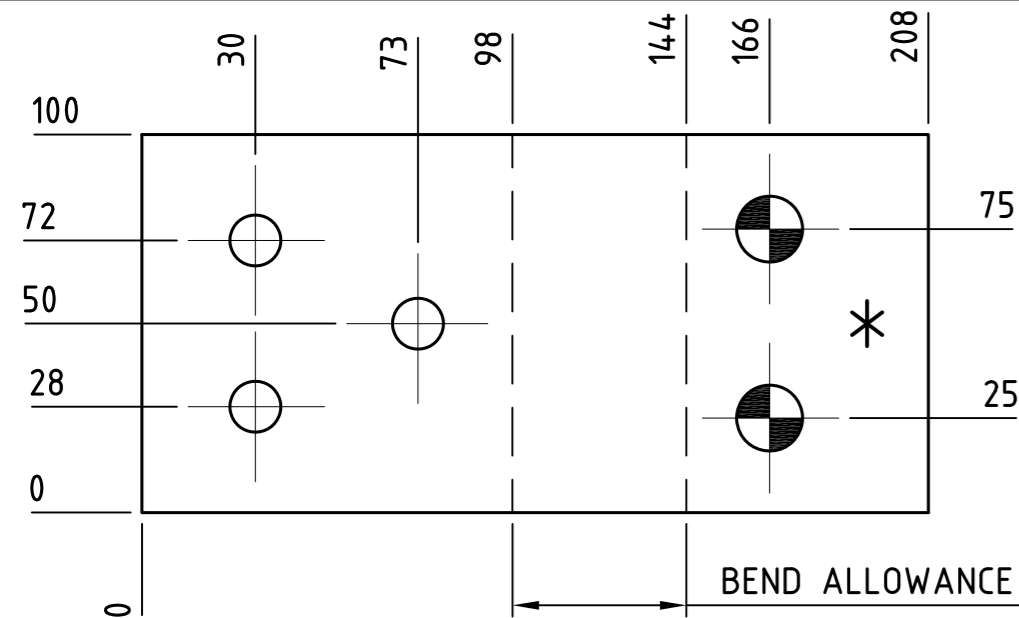
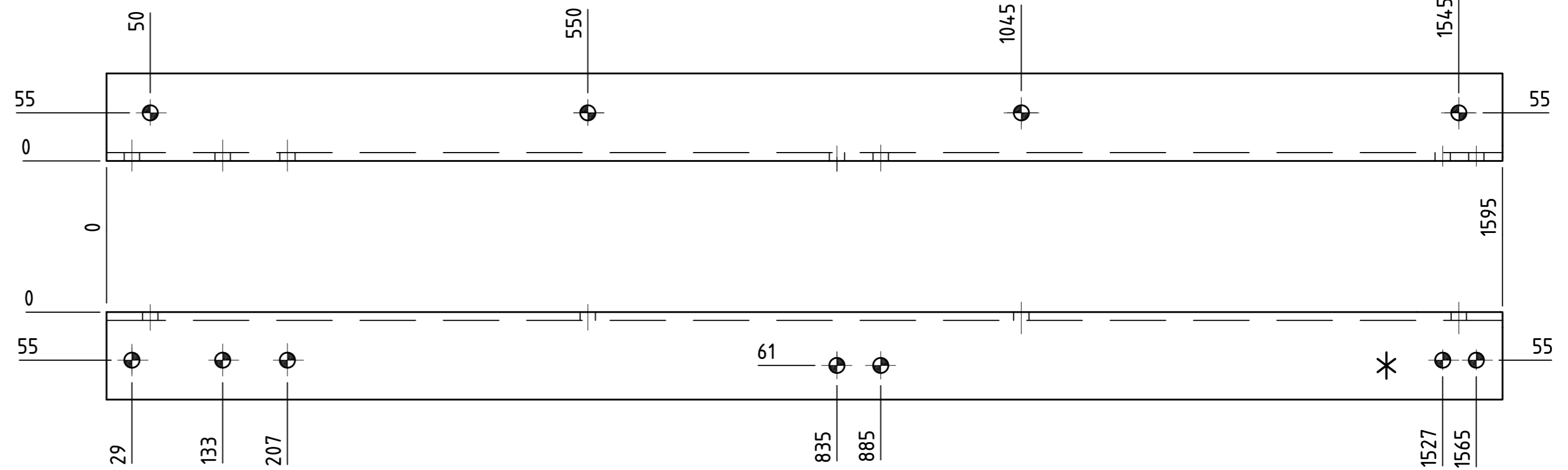


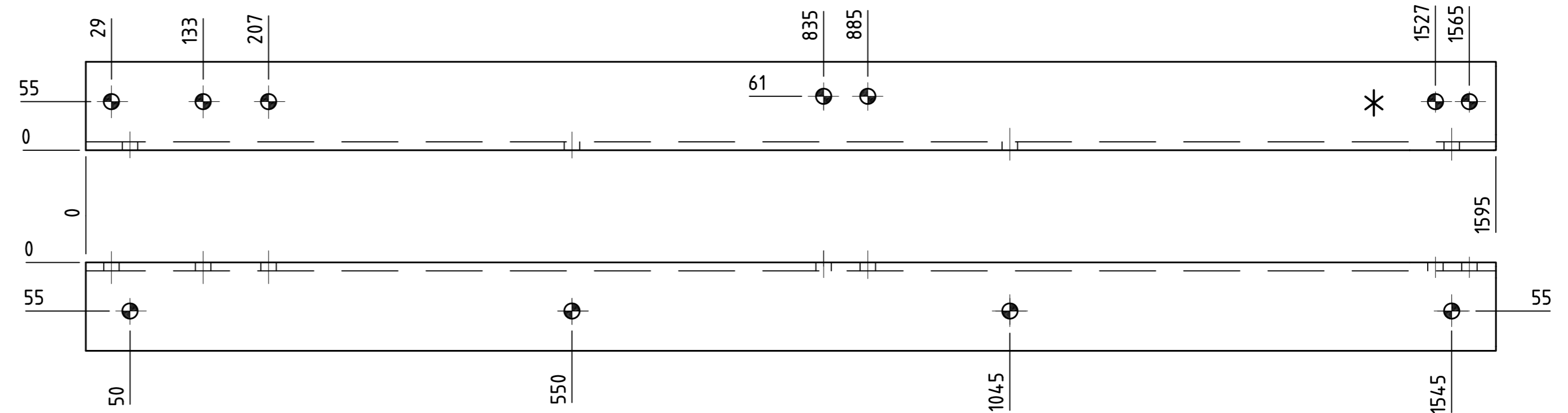
MEMBER NUMBER: **A606**  
 MATERIAL: 12 PL.(GALV.)  
 Q'TY FOR EACH TOWER: 1  
 UNIT WEIGHT: 4.7 Kg.  
 SCALE 1:5



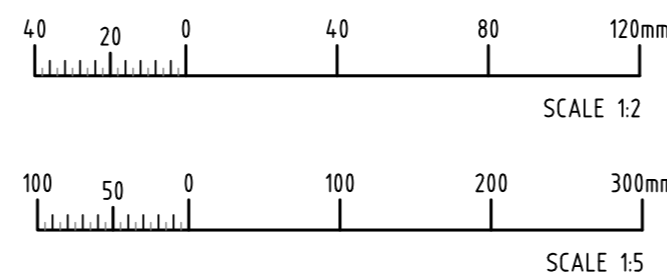
MEMBER NUMBER: **A607**  
 MATERIAL: 10 PL.(GALV.)  
 Q'TY FOR EACH TOWER: 2  
 UNIT WEIGHT: 1.45 Kg.  
 SCALE 1:2



MEMBER NUMBER: **A608**  
 MATERIAL: 100x8 EA. 1595 LG.(GALV.)  
 Q'TY FOR EACH TOWER: 1  
 UNIT WEIGHT: 19 Kg.  
 SCALE 1:5



MEMBER NUMBER: **A609**  
 MATERIAL: 100x8 EA. 1595 LG.(GALV.)  
 Q'TY FOR EACH TOWER: 1  
 UNIT WEIGHT: 19 Kg.  
 SCALE 1:5



DIMENSIONS ARE IN MILLIMETERS U.N.O.

STANDARDS	LEGEND
ANGLE GRADE 300 TO A.S.3679. PLATE GRADE 300 TO A.S.3678.	13.5 DIA HOLE - ○
MEMBER FABRICATION TOLERANCES TO A.S.4100	17.5 DIA HOLE - ⊙
WELDING TO AS 1554 FULL STRENGTH BUTT WELD Cat. SP	21.5 DIA HOLE - ●
HOT DIP GALVANISE TO A.S.4680 AFTER FABRICATION	MEMBER STAMP *

**NOT FOR CONSTRUCTION  
 INFORMATION ONLY**  
 PRINT DATE: 24/11/2019 10:08:28 PM

DRAWN	
CHECKED	
DESIGNED	
CHECKED	
APPROVED	
DATE	
CLIENT APP'D	
DATE	

**entura**  
 WE OWN. WE OPERATE. WE CONSULT.  
[www.entura.com.au](http://www.entura.com.au)  
 © COPYRIGHT 2019

CLIENT SOLOMON POWER ENGAGEMENT No. E307765

TITLE LUNGA-HONIARA  
 33kV TRANSMISSION LINE  
 SUSPENSION OPGW ATTACHMENT  
 DETAILS

NO PART OF THIS DRAWING MAY BE REPRODUCED, STORED IN A RETRIEVAL SYSTEM IN ANY FORM, OR TRANSMITTED BY ANY MEANS WITHOUT THE PRIOR PERMISSION OF ENTURA.

DRG No.	SP-LH-AS-005	SHT.	003	REV.	0 A2
---------	--------------	------	-----	------	------