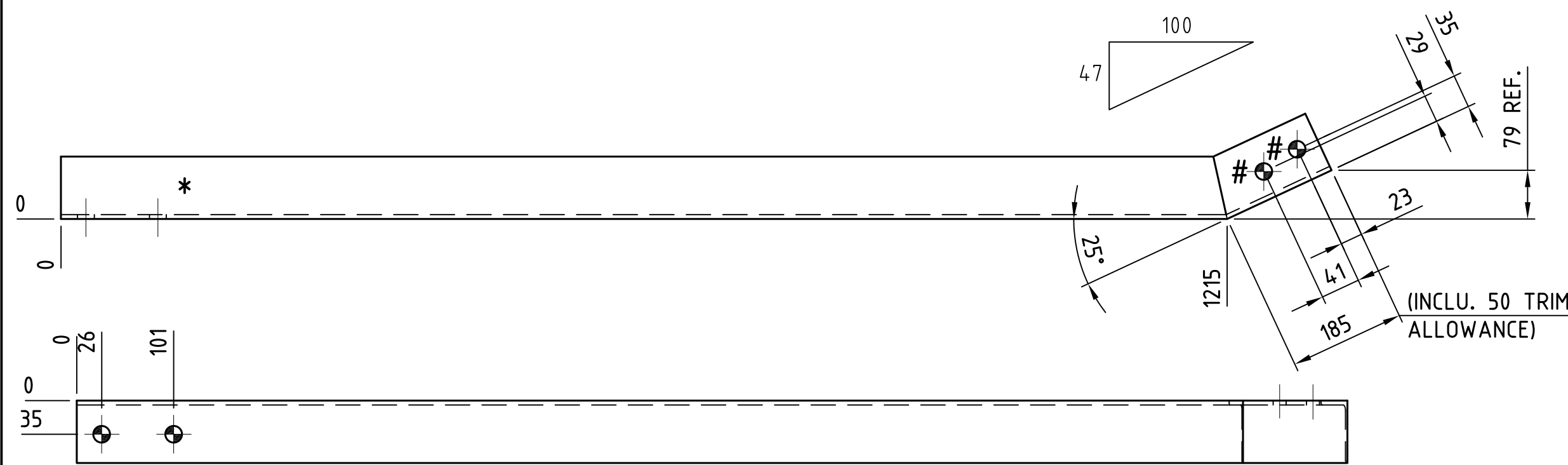
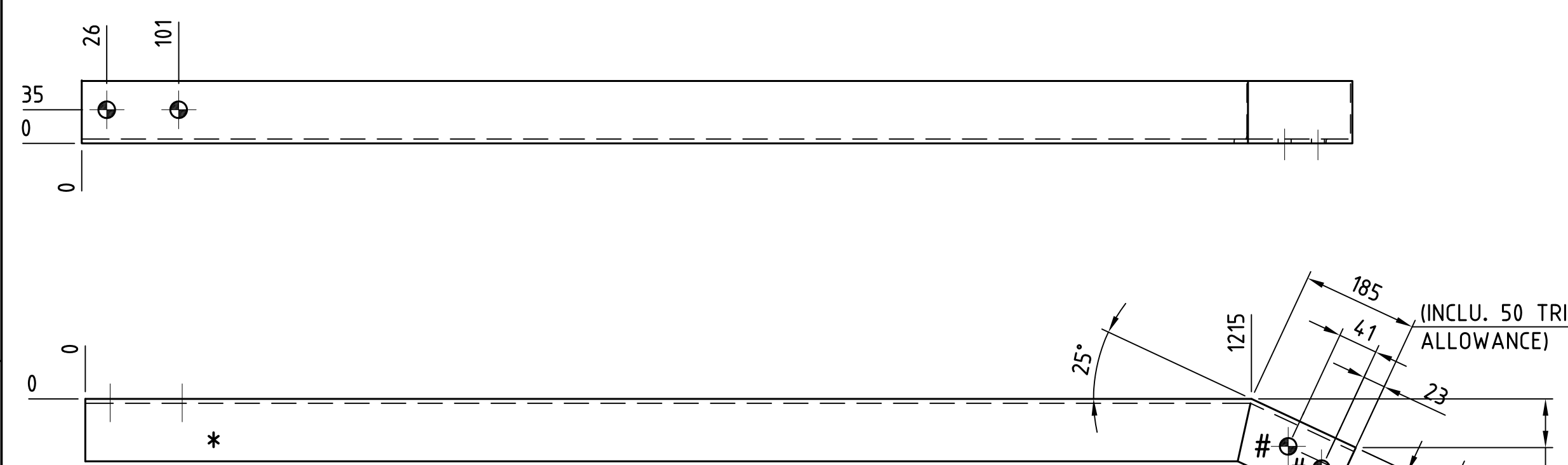


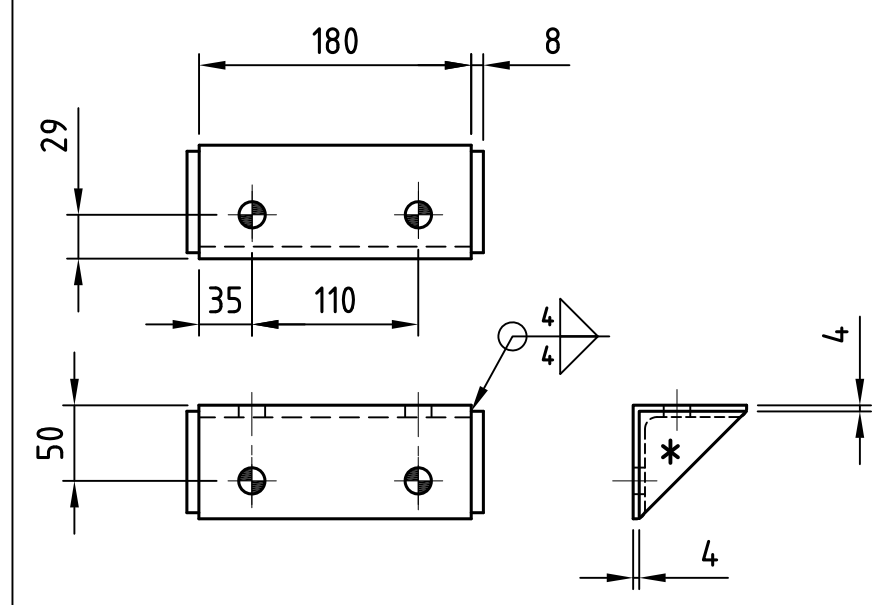
ENTURA IS A BUSINESS OF HYDRO-ELECTRIC CORPORATION ABN 48 072 377 158



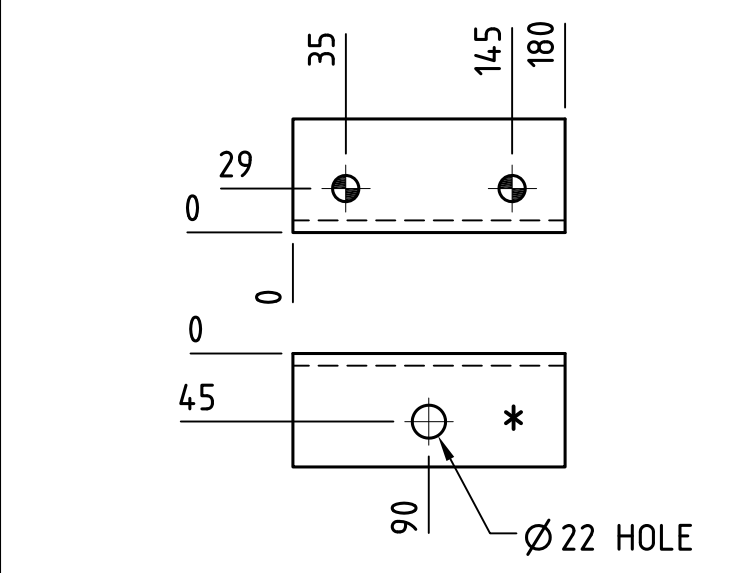
MEMBER NUMBER: **A600**  
 MATERIAL: 65x5 EA. 1400 Lg.(GALV.)  
 Q'TY FOR EACH TOWER: 1  
 UNIT WEIGHT: 6.4 Kg.  
 SCALE 1:5



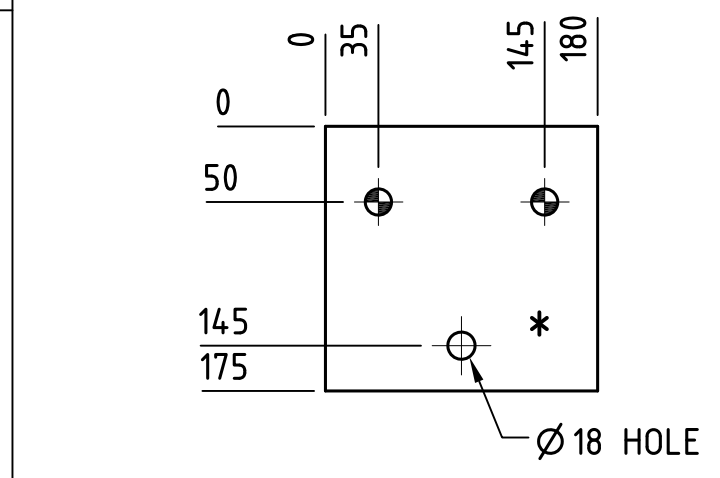
MEMBER NUMBER: **A601**  
 MATERIAL: 65x5 EA. 1400 Lg.(GALV.)  
 Q'TY FOR EACH TOWER: 1  
 UNIT WEIGHT: 6.4 Kg.  
 SCALE 1:5



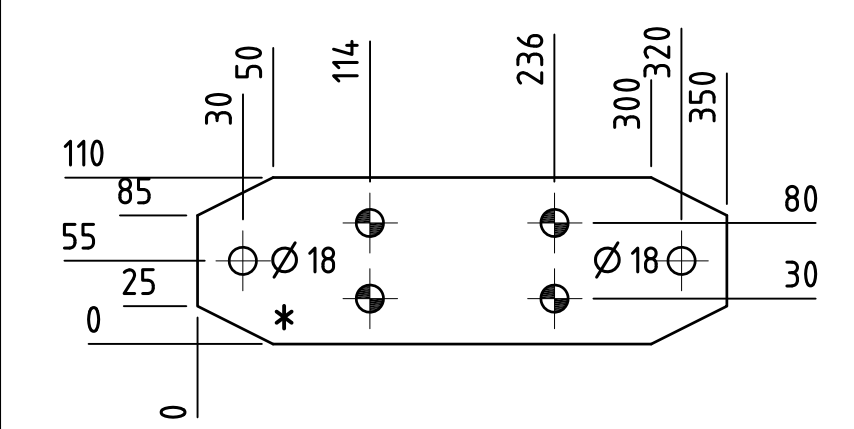
MEMBER NUMBER: **A602**  
 MATERIAL: 75x8 EA(GALV.)  
 Q'TY FOR EACH TOWER: 2  
 UNIT WEIGHT: 2.2 Kg.  
 SCALE 1:5



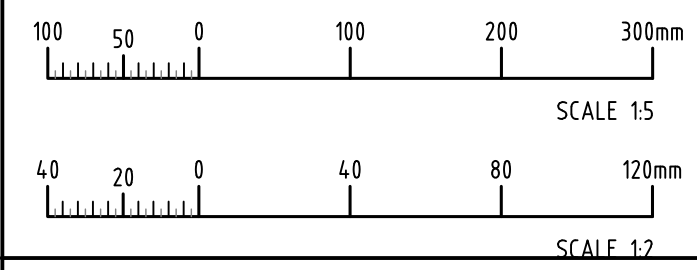
MEMBER NUMBER: **A603**  
 MATERIAL: 75x8 EA(GALV.)  
 Q'TY FOR EACH TOWER: 1  
 UNIT WEIGHT: 1.6 Kg.  
 SCALE 1:5



MEMBER NUMBER: **A604**  
 MATERIAL: 16 THK. PLATE(GALV.)  
 Q'TY FOR EACH TOWER: 1  
 UNIT WEIGHT: 4 Kg.  
 SCALE 1:2



MEMBER NUMBER: **A605**  
 MATERIAL: 16 PL.(GALV.)  
 Q'TY FOR EACH TOWER: 1  
 UNIT WEIGHT: 4.3 Kg.  
 SCALE 1:5



**TRIM NOTE**  
 A TRIM ALLOWANCE HAS BEEN ADDED WHERE THERE IS UNCERTAINTY OVER THE LENGTH OF A MEMBER. WHERE SPECIFIED, SITE PUNCHED/DRILLED HOLE POSITIONS (INDICATED THUS '#') AND ASSOCIATED MEMBER LENGTH SHALL BE MEASURED ON SITE PRIOR TO PUNCHING/DRILLING AND CUTTING.

DIMENSIONS ARE IN MILLIMETERS U.N.O.

STANDARDS		LEGEND	
ANGLE GRADE 300 TO A.S.3679. PLATE GRADE 300 TO A.S.3678.	13.5 DIA HOLE -	17.5 DIA HOLE -	21.5 DIA HOLE -
MEMBER FABRICATION TOLERANCES TO A.S.4100	MEMBER STAMP -	SITE PUNCH/DRILL -	
WELDING TO AS 1554 FULL STRENGTH BUTT WELD Cat. SP			
HOT DIP GALVANISE TO A.S.4680 AFTER FABRICATION			

**NOT FOR CONSTRUCTION INFORMATION ONLY**  
 PRINT DATE: 24/11/2019 10:07:37 PM

DRAWN	
CHECKED	
DESIGNED	
CHECKED	
APPROVED	
DATE	
CLIENT APP'D	
DATE	

**entura**  
 WE OWN. WE OPERATE. WE CONSULT.  
[www.entura.com.au](http://www.entura.com.au)  
 © COPYRIGHT 2019

NO PART OF THIS DRAWING MAY BE REPRODUCED, STORED IN A RETRIEVAL SYSTEM IN ANY FORM, OR TRANSMITTED BY ANY MEANS WITHOUT THE PRIOR PERMISSION OF ENTURA.

CLIENT	SOLOMON POWER	ENGAGEMENT No.	E307765
TITLE	LUNGA-HONIARA 33kV TRANSMISSION LINE SUSPENSION OPGW ATTACHMENT DETAILS		
DRG No.	SP-LH-AS-005	SHT.	002
REV.	0	A2	