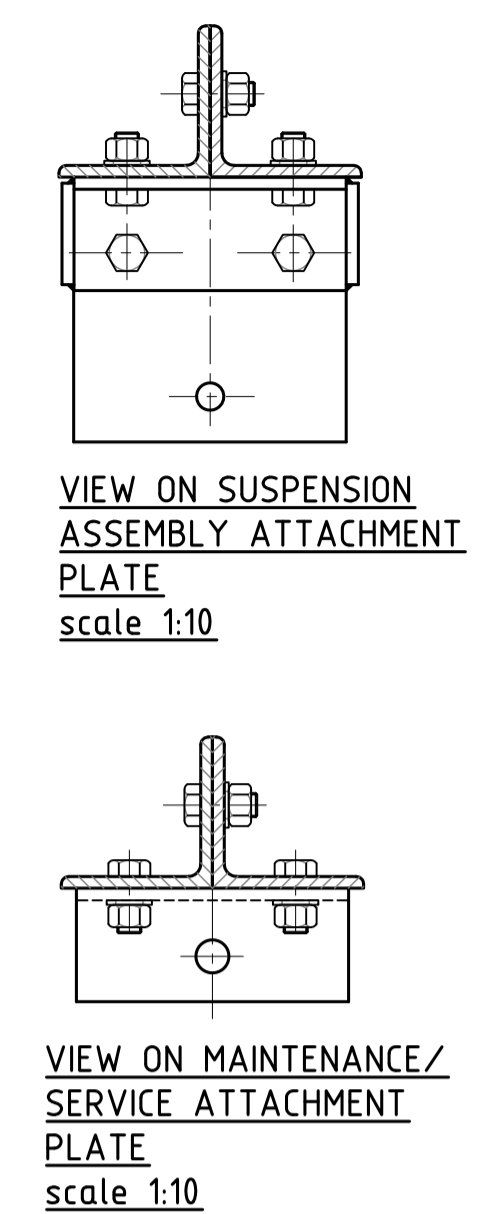
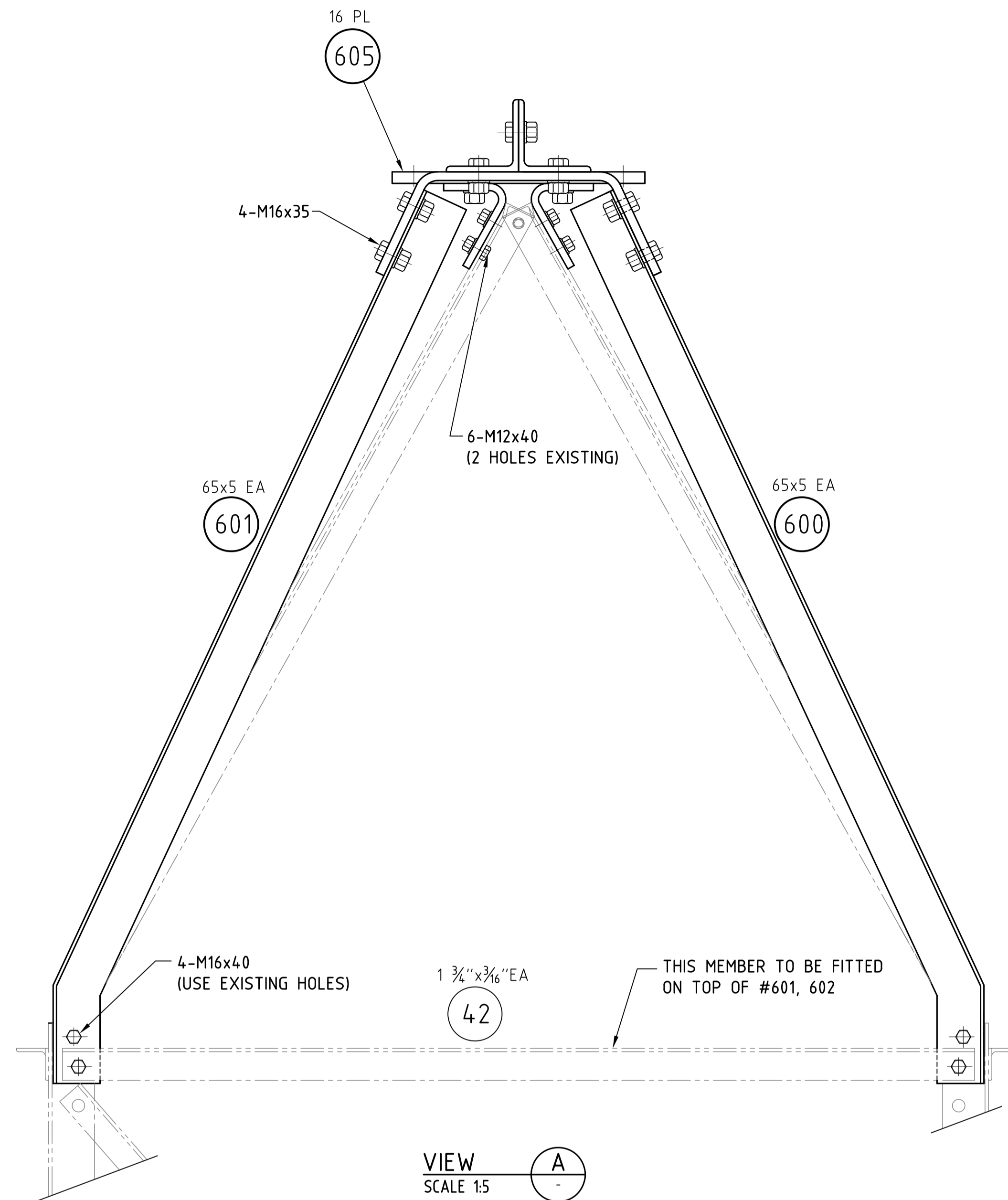
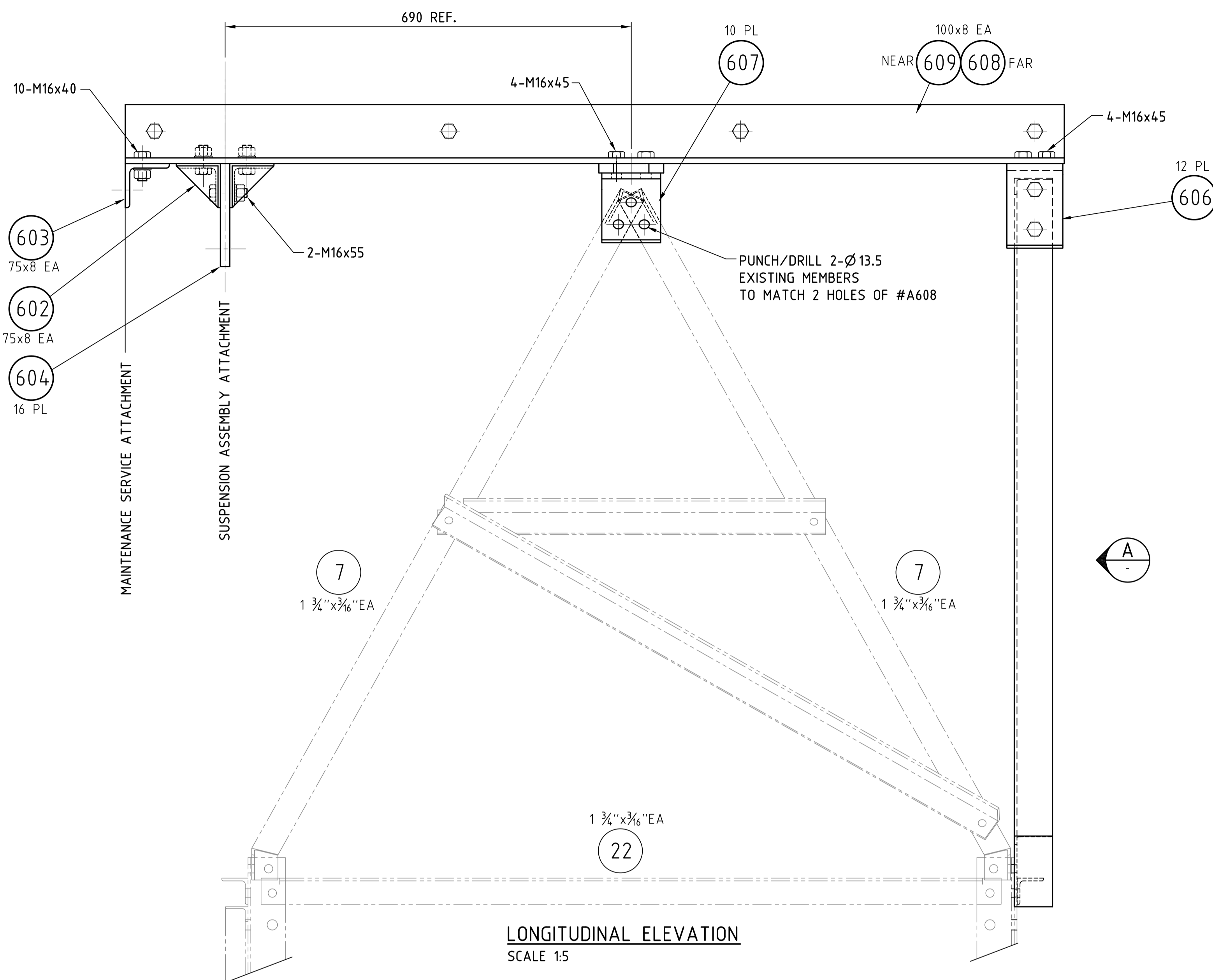


ENTURA IS A BUSINESS OF HYDRO-ELECTRIC CORPORATION ABN 48 072 377 158



LONGITUDINAL ELEVATION
SCALE 1:5

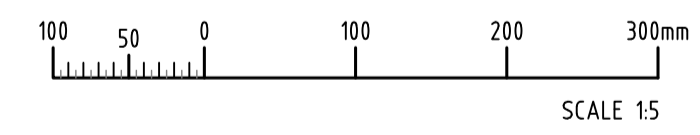
TRANSVERSE ELEVATION
SCALE 1:5

NOTES

1. ALL DIMENSIONS ARE SHOWN IN MILLIMETERS UNO.
2. NORMAL GRADE GALVANIZED TOWERS
STEEL PLATE, FLATS & HOT ROLLED SECTIONS TO BE GRADE 300 TO AS/NZS3678 AND AS/NZS3679.1 AS APPLICABLE UNO. STRUCTURAL STEEL HOLLOW SECTIONS TO BE GRADE C350 TO AS1163.
3. WELDS TO BE FULL STRENGTH BUTT WELDS TO AS/NZS1554 CATEGORY SP. UNO.
4. DETAILS REQUIREMENTS FOR NEW HOLES IN EXISTING MEMBERS AND HOLES IN NEW ANGLE MEMBERS IN ACCORDANCE WITH AS3995 Fig. 3.5.4.6. MINIMUM EDGE DISTANCES IN PLATES TO AS4100 Table 9.6.2.
5. NORMAL GRADE GALVANIZED
ALL NEW ITEMS, EXCLUDING FASTENERS, TO BE GALVANIZED TO AS4680 AFTER FABRICATION. DAMAGE TO GALVANIZES COATING WHETHER BY CUTTING, PUNCHING OR OTHER MEANS TO BE REPAIRED IN ACCORDANCE WITH AS4680 APPENDIX 'E' OR BY THE APPLICATION OF 2 COATS OF 'ZINGA' IN ACCORDANCE WITH THE SPECIFICATION.
6. BOLTS NUTS & WASHERS TO AS/NZS1559, TOWER BOLTS WITH 1 WASHER (UNO), FASTENERS SHALL BE GALVANIZED. REFER. SPECIFICATION FOR THREAD DEFORMATION PROCEDURE.
7. IF APPLICABLE M12x35 Lg. BOLTS WITH 2 WASHERS UNDER THE NUT TO BE USED FOR CLAMPING LENGTHS LESS THAN 11mm.
(SIMILARLY M16x35 Lg. TO HAVE 2 WASHERS WHEN LESS THAN 7mm.)
8. MEMBER NUMBER TO BE STAMPED ON THE TOP OF INCLINED MEMBERS & RIGHT HAND END OF HORIZONTAL MEMBERS BUT BEFORE GALVANIZING IF APPLICABLE.
9. ITEMS SHALL TRIAL ASSEMBLED WHERE POSSIBLE, PRIOR TO PRODUCTION FABRICATION IN ACCORDANCE WITH SP CONSTRUCTION REQUIREMENTS.

LEGEND:

- 600 NEW/UPGRADED MEMBERS
- 314 EXISTING MEMBERS



TOWER No.	MEMBER No.									BOLT LIST (Length in mm)					
	A600	A601	A602	A603	A604	A605	A606	A607	A608	A609	M12x40	M16x40	M16x45	M16x50	M16x60
T13	-	-	-	-	-	1	-	2	-	-	6	-	-	4	-
T14	1	1	2	1	1	1	1	2	1	1	6	18	4	-	4

ALTERATIONS

NOT FOR CONSTRUCTION
INFORMATION ONLY
PRINT DATE: 24/11/2019 10:00:46 PM

NO PART OF THIS DRAWING MAY BE REPRODUCED OR TRANSMITTED IN ANY FORM, OR BY ANY MEANS, WITHOUT THE PRIOR PERMISSION OF ENTURA.

REFERENCES	DRAWN	CHECKED	DESIGNED	CHECKED	APPROVED	DATE	CLIENT APP'D	DATE

entura
WE OWN. WE OPERATE. WE CONSULT.
89 Cambridge Park Drive, Cambridge,
Tasmania, 7170, AUSTRALIA
Ph: 03 6245 4500 Fax: 03 6245 4550
www.entura.com.au
© COPYRIGHT 2019

CLIENT: SOLOMON POWER	ENGAGEMENT No: E
TITLE: LUNGA-HONIARA 33kV TRANSMISSION LINE SUSPENSION OPGW ATTACHMENT ARRANGEMENT	SCALE: A1
DRG No: SP-LH-AS-005	SHT: 001
REV: 0	