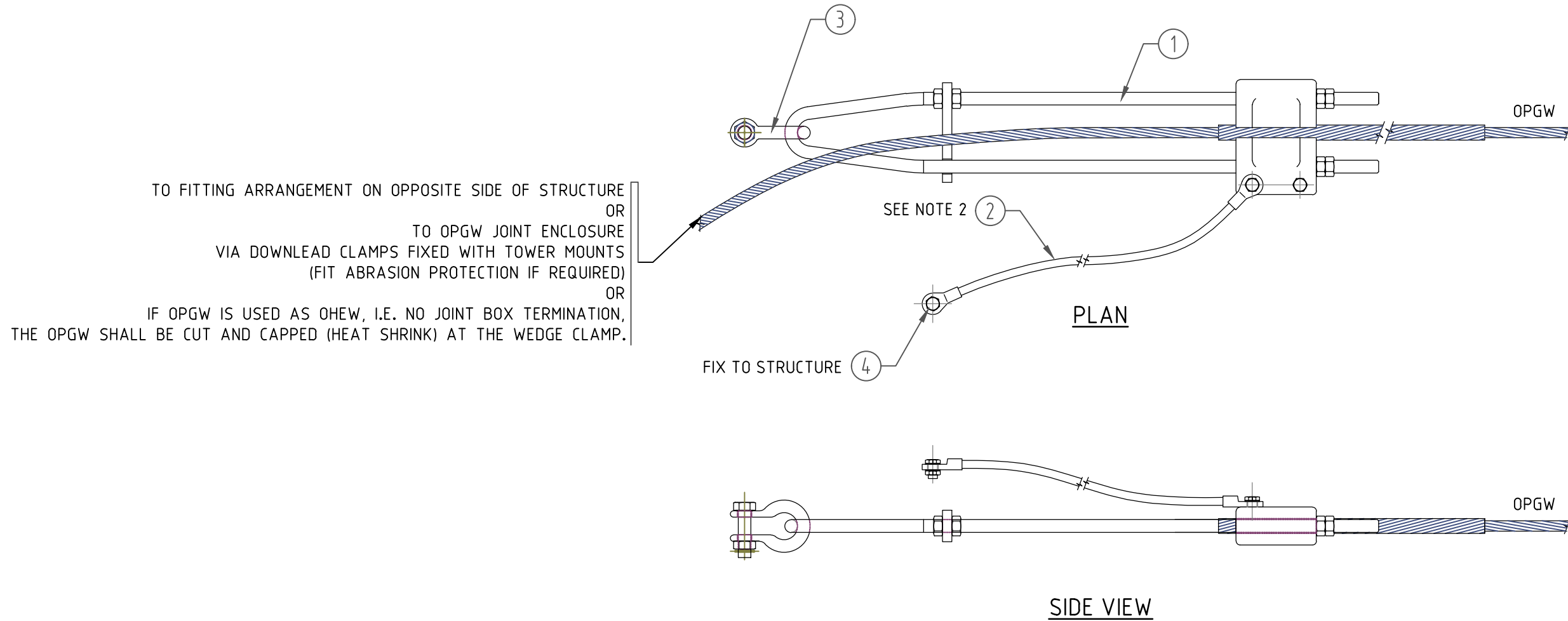


**NOTE**

1. FITTINGS ARE INDICATIVE ONLY - CONTRACTOR SHOULD REVIEW FITTINGS SUPPLIED AGAINST ARRANGEMENT SHOWN TO CONFIRM SUITABILITY PRIOR TO ORDERING.
2. TO BE OF SUFFICIENT LENGTH TO ALLOW CONNECTION TO STRUCTURE TO REMAIN SLACK UNDER ALL OPERATING CONDITIONS. CHECK ELECTRICAL CLEARANCES DURING INSTALLATION.
3. FAULT RATING OF ASSEMBLY TO MATCH OR EXCEED FAULT RATING OF OPGW.
4. ALL BOLTED FITTINGS TO COMPLY WITH AS1154 AND TO BE SUPPLIED WITH SPLIT PIN.
5. ALL NUTS & SPLIT PINS ARE TO BE ORIENTATED IN THE SAME DIRECTION OR TOWARDS GROUND LEVEL WHERE POSSIBLE.

| QTY. | ITEM | DESCRIPTION  | REFERENCE/REMARKS |
|------|------|--|-------------------|
| 1    | 1    | TENSION SET, TO SUIT $\phi$ 7.6mm OPGW<br>WEDGE TYPE, COMPLETE W/ RETENTION RODS | REFER AS1154      |
| 1    | 2    | EARTH BONDING LEAD, LENGTH TO SUIT   | REFER AS1154      |
| 1    | 3    | SHACKLE, 16mm, 70kN F/L, COMPLETE WITH M16 BOLT ASSEMBLY                         | REFER AS1154      |
| 2    | 4    | BOLT ASSEMBLY, M12x35, GALVANISED  | REFER AS1111      |



ENTURA IS A BUSINESS OF HYDRO-ELECTRIC CORPORATION ABN 48 072 377 158

|              |     |
|--------------|-----|
| DRAWN        | AJD |
| CHECKED      |     |
| DESIGNED     |     |
| CHECKED      |     |
| APPROVED     |     |
| DATE         |     |
| CLIENT APP'D |     |
| DATE         |     |

**entura**  
 WE OWN. WE OPERATE. WE CONSULT.  
 89 Cambridge Park Drive, Cambridge,  
 Tasmania, 7170, AUSTRALIA  
 Ph: 03 6245 4500 Fax: 03 6245 4550  
[www.entura.com.au](http://www.entura.com.au)  
 © COPYRIGHT 2012

|         |  |                |         |
|---------|--|----------------|---------|
| CLIENT  | SOLOMON POWER  | ENGAGEMENT No: | E307765 |
| TITLE   | LUNGA - HONIARA<br>33kV TRANSMISSION LINE<br>OPGW STRAIN (TO SUIT $\phi$ 7.6mm OPGW)<br>ASSEMBLY |                |         |
| DRG No. | SP-LH-AS-004   | SHT.           | 001     |
|         |  | REV.           | 0 A3    |