

MATERIAL SPECIFICATION

VOCAB NUMBER	ITEM DESCRIPTION
134052	SHROUD, TRANSFORMER BUSHING, LV (LARGE)

SPECIFICATION DETAILS

Black, polyethylene shields for transformer bushings.

To fit ESSA Standard, 3.3kV, 400 amps, bushing (ESSA drawings 2/3/3B, Elcom SC-1/17).

To be suitable for outdoor use in a tropical environment at altitudes up to 3000m.

Full dimensioned drawings and description of product to be provided with tender.

- **Unit of Measure:** Metres
- **Rejection:** PNG Power Ltd reserves all rights to reject whole or part of the order not complying with this specification and is not liable for any cost or loss with the return of rejects to the Supplier. Facilitation of Invoice Credit must commence between the supplier and PNG Power Ltd through the process of PNG Power Ltd Discrepancy Report provisions.

Drawing References:

Manufacturer's Product Code:

STANDARDS COMMITTEE APPROVAL

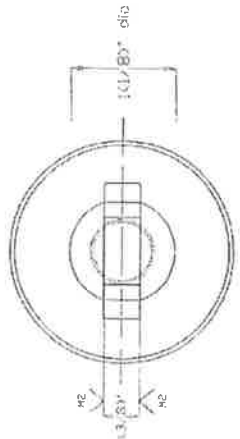
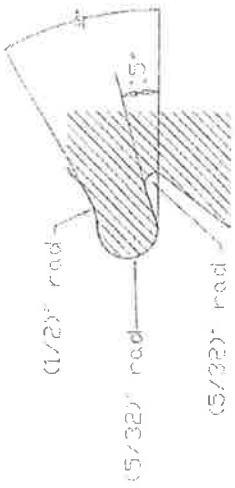
Approval by Alex Oa
Chairman

Signature: 

Date: 22/6/16

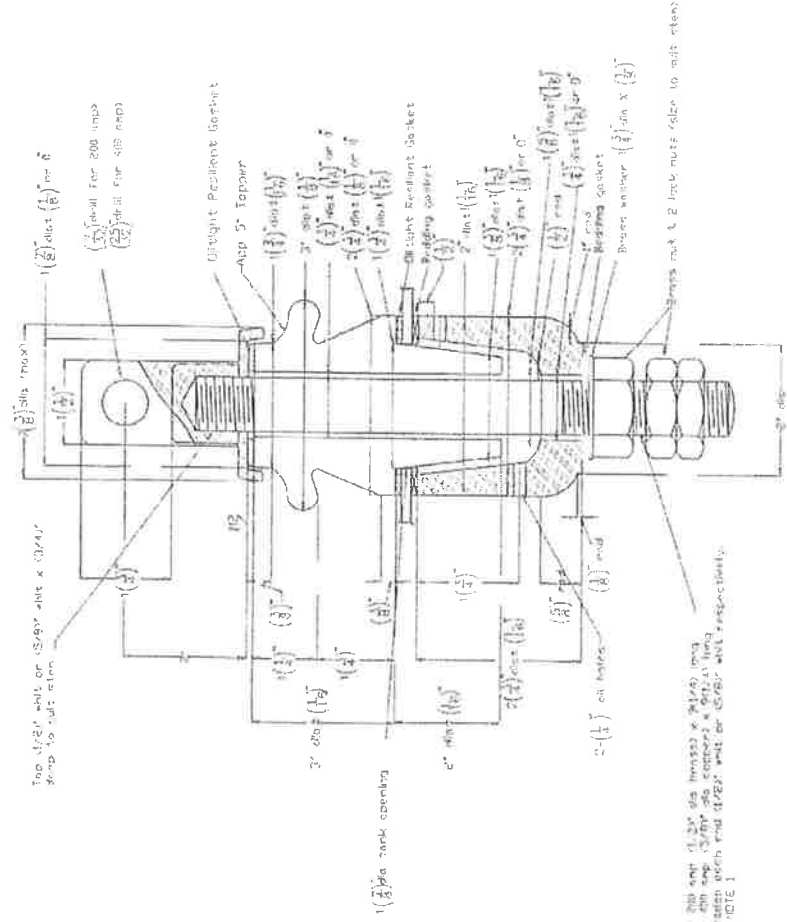
DATA REVIEW ENDORSEMENT

NAME	TITLE	SIGNATURE	DATE
Grevasias Peni	Team Leader Standards & Materials		21/6/16
	//		09/08/20



DETAILS OF SHEDS OF BUSHING

PLAN VIEW OF CAP ONLY



STEM For this cap (1.32" dia insulator) & (1.32" dia stem) use 13707 die copper & 13701 die brass. Separation with end of 13701 with die 13701. SEE NOTE 1

- NOTES**
1. STEM MATERIALS
200 amp, (1/2)" dia brass, having a specific resistance not exceeding 7 microhms per cu. inch.
400 amp, (5/8)" dia electrolytic copper.
 2. Stem to be screwed and sweated into bushing cap.
 3. All porcelain surfaces in contact with gaskets to be ground perfectly flat and square with axis of bushing.
 4. Brass cap to be of non-porous alloy tested at 15 psi
 5. Porcelain to be glazed known.
 6. This outdoor type bushing is suitable for use only on Distribution transformers of capacity not exceeding 1000kVA or other than Distribution transformers, or on Distribution transformers having a capacity in excess of 1000kVA. It should be used only with the specific approval of the customer.
 7. $\frac{1}{16}$ " = Medium machined
 8. This bushing complies with the requirements of AS C325/1959.
 9. Oil tight resilient gasket S.R.E.C (Hardness NP50 or NP40) or similar.
 10. Bedding gasket pressboard or similar.

ELECTRICAL CHARACTERISTIC

Max. amps	200 or 400
Dry flashover	36 kV
Wet flashover	17 kV
Impulse flashover 1/50 -ve	79 kV
Impulse flashover 1/50 +ve	79 kV
Creepage distance	3.8 inches

REASSEMBLED SCALE - ALL DIMENSIONS IN INCHES
NOTE: Bushing is shown as for 400 amp.

C/O File No.	Rev.	By	CHKD	DATE
	A.	AA	CHKD	12/7/58
C/NO: Q/S: 1/17/DWG	Revision	Refer E.S.U. drawing 22/28		
		Revised with lead & top change		
Des. Project:	Scale:	LS	CHKD	2/16/59
1/17/58	NTS			

Drawn	A. Jagan	(20/7/58)	Location	Standards & Materials
Designed			Title	Assembly of 415V. to 3.3kV 200 Amp or 400 Amp
Checked			Author	Standard Distribution transformer bushing
Entered	Z/K/S		Number	SC - 1/17
Approved			Revision	Sheet