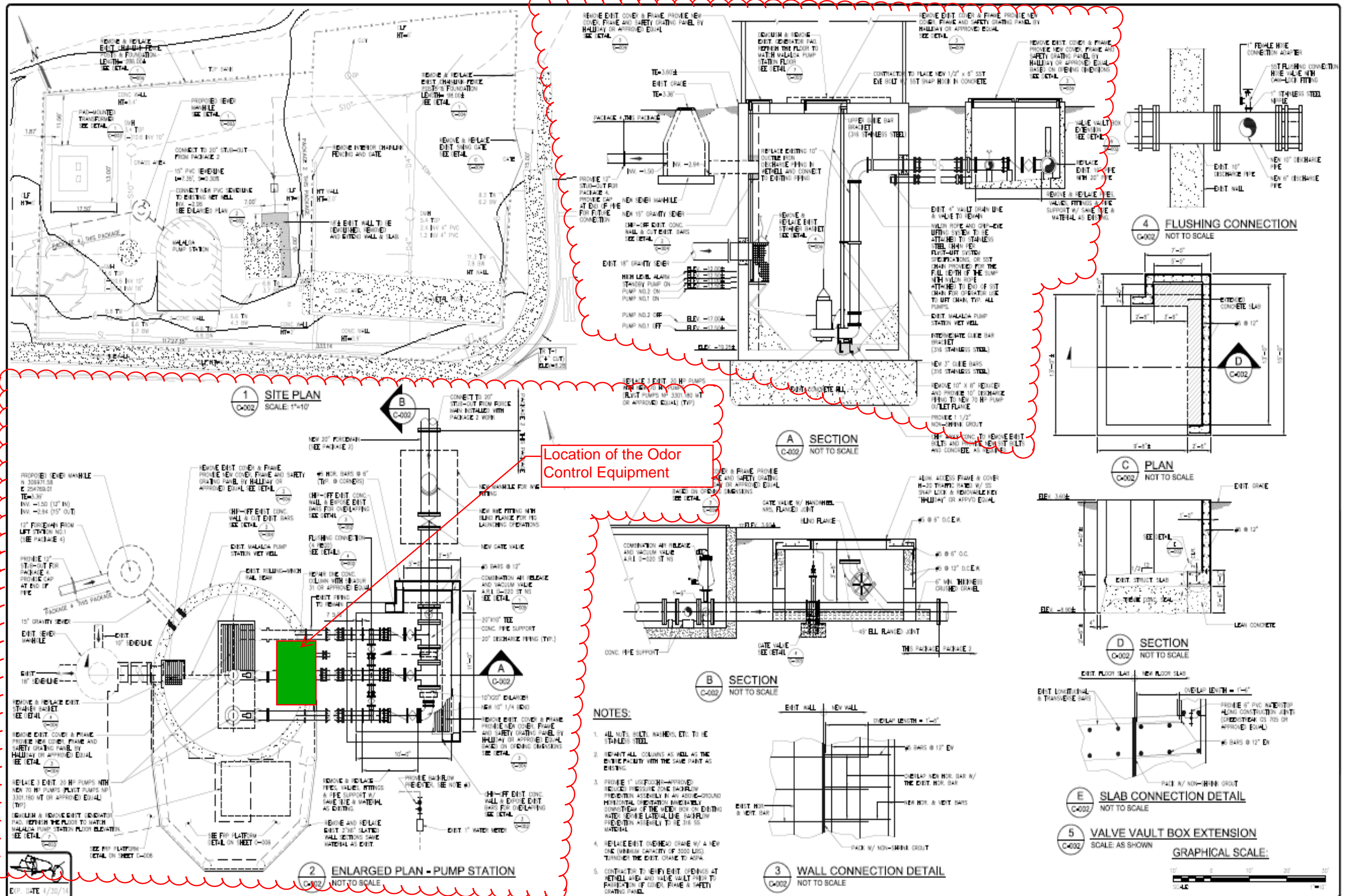


Malaloa Lift Station - Odor Control Location



Location of the Odor Control Equipment

- NOTES:**
1. ALL WELLS, SLEETS, MANHOLES, ETC. TO BE STAINLESS STEEL.
 2. REPAIR ALL WALL COLUMNS AS WELL AS THE EXISTING PART WITH THE SAME PART AS EXISTING.
 3. PROVIDE 1" USE-PROOF-APPROVED REINFORCING BARS (MINIMUM CAPACITY OF 3000 LBS) HORIZONTAL ORIENTATION IMMEDIATELY DOWNSTREAM OF THE METER BOX ON EXISTING WATER SERVICE LATERAL LINE (MINIMUM REINFORCING ASSEMBLY TO BE 3/8" SS MATERIAL).
 4. REPLACE EXIST. OVERHEAD DRAIN W/ A NEW ONE (MINIMUM CAPACITY OF 3000 LBS) THROUGH THE EXIST. CHASE TO ASPA.
 5. CONTRACTOR TO VERIFY EXIST. OPENINGS AT METHALL AREA AND VALVE VAULT PRIOR TO REPAIRS OF COVER, FRAME & SAFETY GRATING PANEL.

