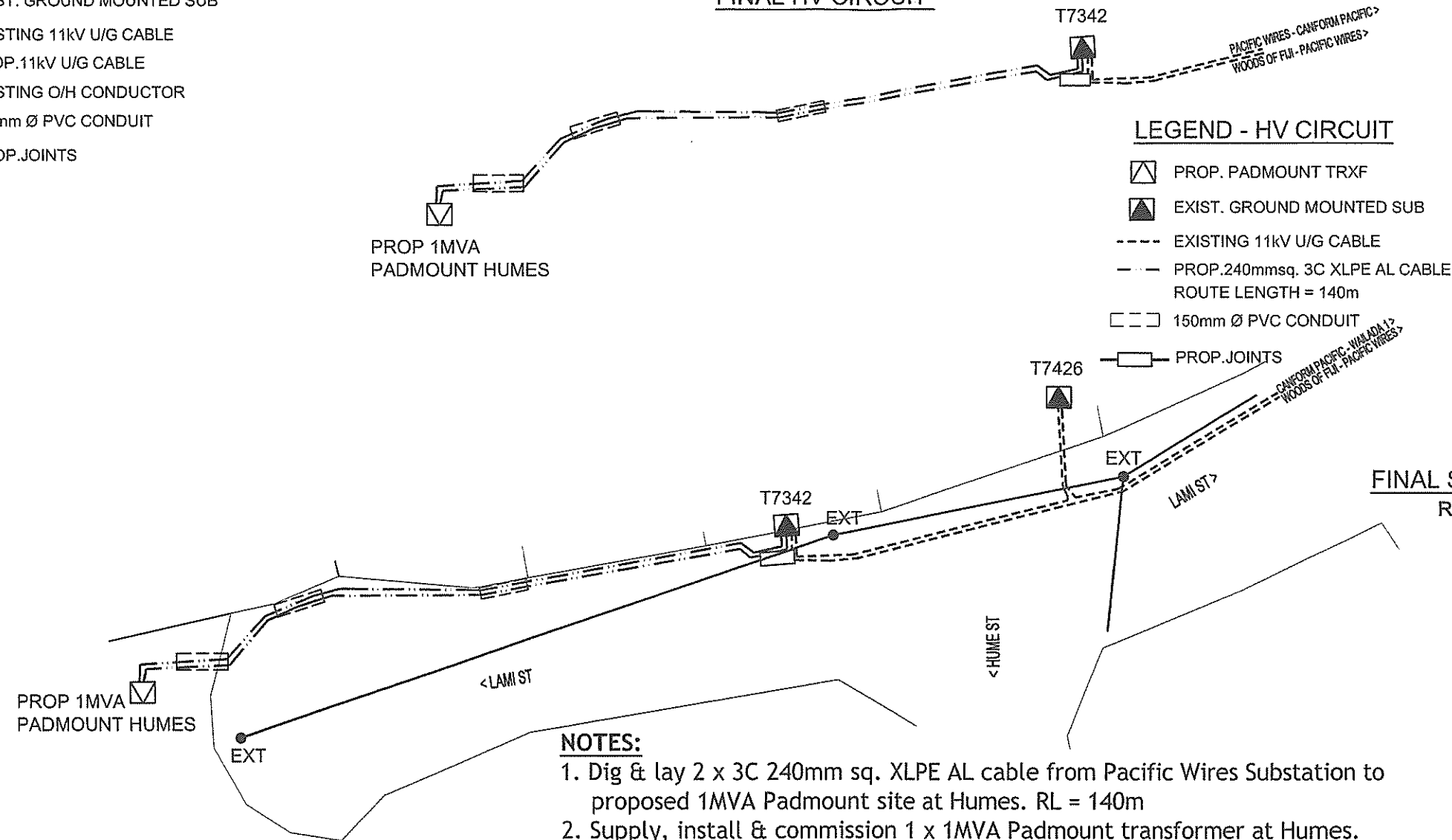
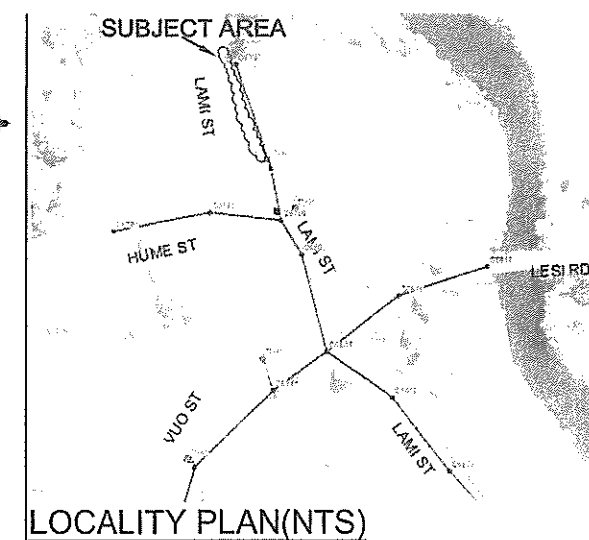


**LEGEND**

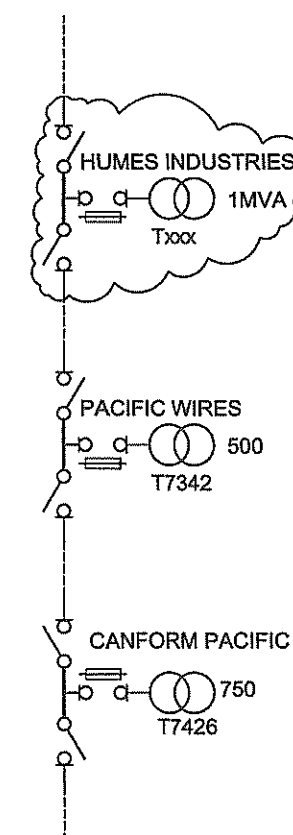
- LV POLE
- ▢ PROP. PADMOUNT TRXF
- ▲ EXIST. GROUND MOUNTED SUB
- EXISTING 11kV U/G CABLE
- - - PROP. 11kV U/G CABLE
- EXISTING O/H CONDUCTOR
- 150mm Ø PVC CONDUIT
- PROP. JOINTS

**FINAL HV CIRCUIT****LEGEND - HV CIRCUIT**

- ▢ PROP. PADMOUNT TRXF
- ▲ EXIST. GROUND MOUNTED SUB
- EXISTING 11kV U/G CABLE
- - - PROP. 240mmsq. 3C XLPE AL CABLE  
ROUTE LENGTH = 140m
- 150mm Ø PVC CONDUIT
- PROP. JOINTS

**FINAL SINGLE LINE DIAGRAM**

REF SLD NO. 04 N10 014

**NOTES:**

1. Dig & lay 2 x 3C 240mm sq. XLPE AL cable from Pacific Wires Substation to proposed 1MVA Padmount site at Humes. RL = 140m
2. Supply, install & commission 1 x 1MVA Padmount transformer at Humes.
3. Joint one end of the new cable with existing HV cable from Woods of Fiji Sub, at Pacific Wires Substation. Terminate the second cable at SD2 Switchgear at Pacific Wires Substation.
4. Lay 150mm diameter PVC conduit for driveways.
5. Trenching to be carried out along the grass berm, 1.2m from road seal.
- 6(i) Add labels to incoming & outgoing switches on proposed 1MVA Padmount transformer as per connection, namely:
  - (a) Woods of Fiji
  - (b) Pacific Wires
- (ii) Change existing label from 'Pacific Wires' to 'Humes Industries' at Woods of Fiji Sub.
- (iii) Change existing label from 'Woods of Fiji' to 'Humes Industries' at Pacific Wires Sub.

							DRAWN				PRIYA	29.01.18	<b>FIJI ELECTRICITY AUTHORITY</b>			
							CHECKED									
							CHIEF DRAUGHTSMAN					08.02.18	SUPPLY TO HUMES INDUSTRIES LTD LAMI DISTRICT (G111.15A) WAILADA, LAMI			
							TEAM LEADER DESIGN & PLANNING					06.02.18				
							ENGINEER						DRAWING NUMBER			
							HEAD OF DEPARTMENT				K. Prasad	8/02/18				
															A3	
															09	
															N43	
															019	
															SCALE	
															1 : 500	