

# On-going Technical Cooperation Project

## *“Introduction of Hybrid Power Generation System in PICs” 2017 - 2022*

- Five counterpart countries - Fiji, Kiribati, RMI, FSM and Tuvalu
- Long-term Expert stationed in Fiji & Short-term Expert Team
- Training Courses in Okinawa, Japan (February & October 2018)

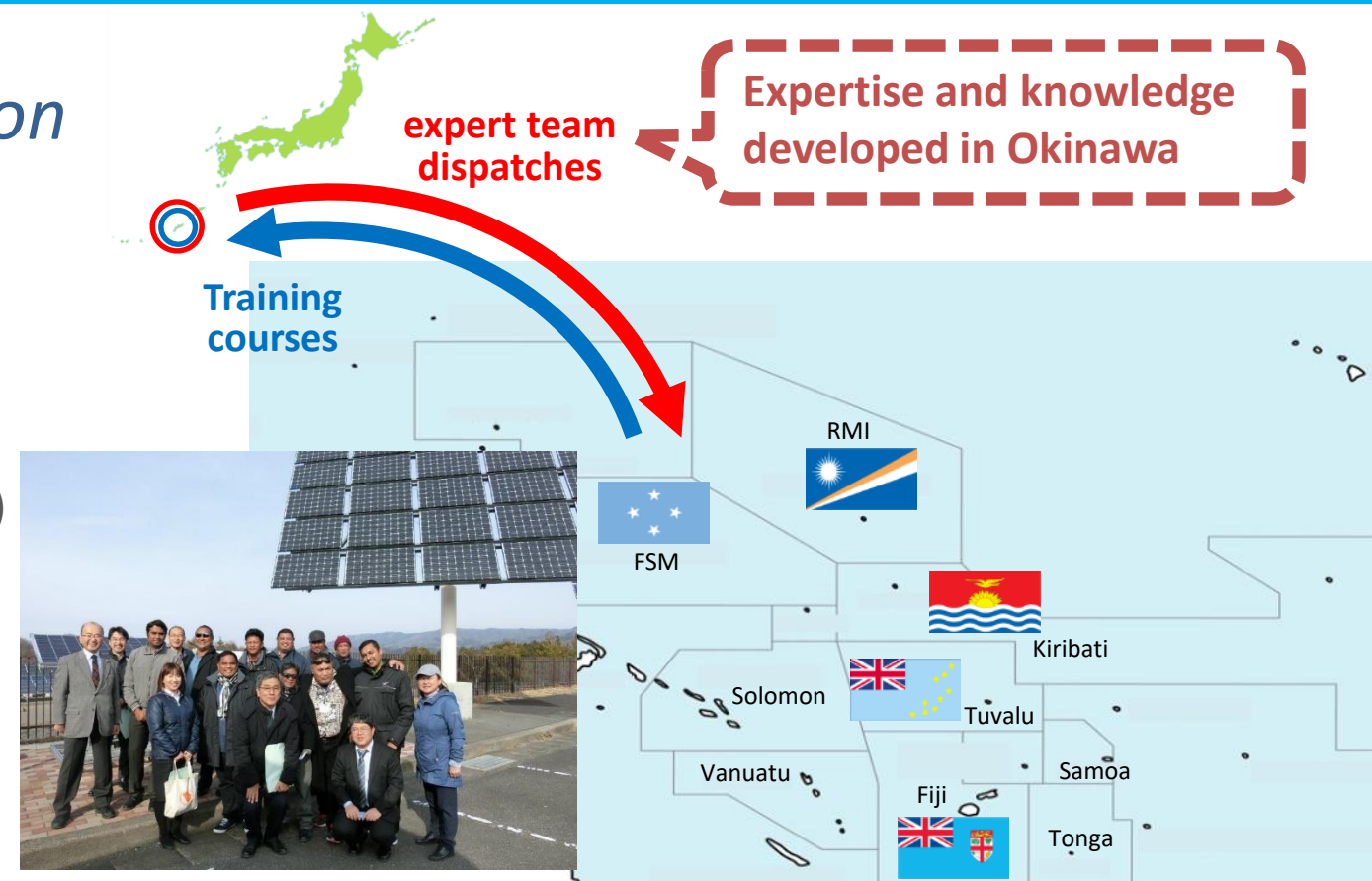
### ©Phase-1 (2017-2019) Preparation for Regional Training System

- Training Needs Assessment
- Capacity Assessment for candidate trainers
- Training of Trainers (ToT) in Fiji
- Technical advise and support for the operation and maintenance of existing DEG and RE power generation systems

### ©Phase-2 (2019-2022) Implementation of Regional Training Courses

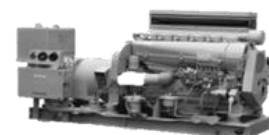
inviting Kiribati, Tuvalu, FSM and RMI to Fiji

- Training for Operation and Maintenance of DEGs
- Training for Grid Integration of RE generation systems
- Training for Operation and Maintenance of RE generation systems



## Optimized Hybrid System Operation

Diesel Engine Generator



- Improve Operation & Maintenance of Diesel Engine Generator

Renewable Energy

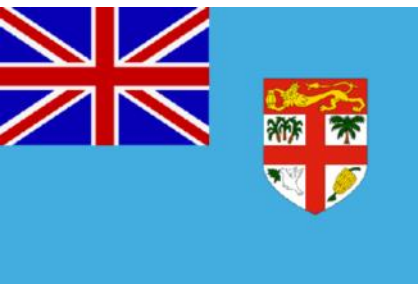


- Integration of large capacity RE without sacrificing quality and reliability of power supply

Energy Storage



- Ensure cost-effective introduction and proper planning for longer lifetime



# Needs for Regional Training System

## Concept of Region-wide Training “Regional Center of Excellence” at EFL Lautoka Training Center

- Establishment of training courses related to JICA’s on-going technical cooperation project
- To accommodate other training needs in the future
- Expected training participation from other regional countries
- Accumulation of necessary know-how and skills

- Know-how and experience of region-wide training
- Training of trainers in Fiji (lecture & hands-on)
- Advise on training materials

- Region-wide training
- Training for core trainers (classroom, hands-on)
- Follow-up after training



Not only countries conducting JICA’s on-going project but also Samoa, Solomon Islands, Tonga, Vanuatu and more ...

Fiji

- Training center in place
- Experienced & skilled trainers (EFL, DOE)
- Collaboration with PPA

Other development partners

Interactive learnings

among multiple counterparts

Surrounding Countries

- Similar challenges in the region
- Lacking training resources
- Higher cost if individual trainings are conducted

- Training needs
- Core trainers
- Existing situation and future plan
- Feedback after training

PV System for Training (3.5kW)  
EFL Lautoka Training Center

