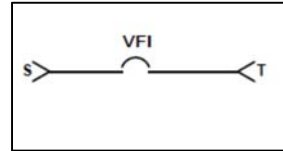


VACUUM FAULT INTERRUPTER (VFI) UNDERGROUND DISTRIBUTION SWITCHGEAR

1. KPDE-VF5-32:[Make Note KP or KV]



- Pad-Mounted Double Sided Unit
- Envirotemp 200 Fluid Insulation
- Model 5 – Single Switch or VFI protected tap ways.
- Fault-Interrupter Operation:
 - Three Phase Gang Trip (STANDARD)
- Visible-Break Switch Options:
 - Two Position Visible Break – All Source & Tap Ways
- Bushing Option:
 - 15KV, 600A dead-break bushings on source ways, 200A load-break bushing wells on tap ways
 - Externally Replaceable Bushing/Wells – (On all Ways)
- Controls:
 - Tri-phase Control (STANDARD)
- Control Options:
 - Time-Current Curve Card – EF Curve (STANDARD)
 - TF-Current Curve Card – TF Curve
 - Minimum Response Time Accessory – EF Curve (STANDARD)
 - Minimum Response Time Accessory – TF Curve
- Construction:
 - Pad-Mounted style, Tank, Cabinet Material – 304L Stainless Steel Construction
 - Color – Bell Green
- Distribution Automation:
 - No Motor Operators/Provision [STANDARD]
- Auxiliary Switch:
 - Not Required
- Indicators:
 - Not Required
- Grounding Options:
 - Ground Stud [STANDARD]
- Fault Indicator Provisions:
 - Not Required
- Service Items:
 - 1" Drain Valve with 3/8" Sampler
 - Penta-Head door bolt [STANDARD]
- Decals:
 - Danger High Voltage
 - Non-PCB

Table 1. Ratings for VFI Switchgear and Load-Break Switch*

Nominal Voltage		15 kV	15 kV
Maximum Design Voltage, kV		15.5	15.5
BIL, kV		95	95
1-minute Withstand Voltage (60 Hz), kV		35	35
Momentary Current, 10 cycles (sym.), kA		12.5	16.0
1-second Withstand Current (sym.), kA		12.5	16.0
Vacuum Fault Interrupter	Continuous Current, (max.), A	600**	600**
	Interrupting Current (sym./asym.), kA	12.5/20.0	16/25.8
	Making Current (sym.), kA	12.5	16.0
	Cable Charging Interrupting Current, A	10.0	10.0
	Continuous Current, (max.), A	600	600
Load-Break Switch	Load Switching, A	600	600
	Fault Making (sym./asym.), kA	12.5/20.0	16/25.8

* Continuous and short-circuit currents may be limited by ratings of selected bushings.

** 900 A and 1200 A continuous-current ratings are also available.

2. **KPDE-VF9-32:**[Make Note KP or KV]

- Pad-Mounted Double Sided Unit
- Envirotemp 200 Fluid Insulation
- Model 9 – Two switched source ways and Two VFI protected tap ways.
- Fault-Interrupter Operation:
 - Three Phase Gang Trip (STANDARD)
- Visible-Break Switch Options:
 - Two Position Visible Break – All Source & Tap Ways
- Bushing Option:
 - 15KV, 600A dead-break bushings on source ways, 200A load-break bushing wells on tap ways
 - Externally Replaceable Bushing/Wells – (On all Ways)
- Controls:
 - Tri-phase Control (STANDARD)
- Control Options:
 - Time-Current Curve Card – EF Curve (STANDARD)
 - TF-Current Curve Card – TF Curve
 - Minimum Response Time Accessory – EF Curve (STANDARD)
 - Minimum Response Time Accessory – TF Curve
- Construction:
 - Pad-Mounted style, Tank, Cabinet Material – 304L Stainless Steel Construction
 - Color – Bell Green
- Distribution Automation:
 - No Motor Operators/Provision [STANDARD]
- Auxiliary Switch:
 - Not Required
- Indicators:
 - Not Required
- Grounding Options:
 - Ground Stud [STADARD]
- Fault Indicator Provisions:
 - Not Required
- Service Items:
 - 1" Drain Valve with 3/8" Sampler
 - Penta-Head door bolt [STANDARD]
- Decals:
 - Danger High Voltage
 - Non-PCB

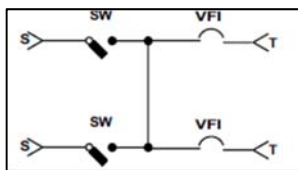


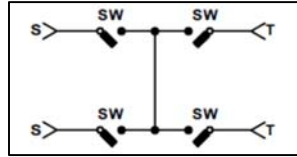
Table 1. Ratings for VFI Switchgear and Load-Break Switch*

Nominal Voltage		15 kV	15 kV
Maximum Design Voltage, kV		15.5	15.5
BIL, kV		95	95
1-minute Withstand Voltage (60 Hz), kV		35	35
Momentary Current, 10 cycles (sym.), kA		12.5	16.0
1-second Withstand Current (sym.), kA		12.5	16.0
Vacuum Fault Interrupter	Continuous Current, (max.), A	600**	600**
	Interrupting Current (sym./asym.), kA	12.5/20.0	16/25.8
	Making Current (sym.), kA	12.5	16.0
	Cable Charging Interrupting Current, A	10.0	10.0
	Continuous Current, (max), A	600	600
Load-Break Switch	Load Switching, A	600	600
	Fault Making (sym./asym.), kA	12.5/20.0	16/25.8

* Continuous and short-circuit currents may be limited by ratings of selected bushings.

** 900 A and 1200 A continuous-current ratings are also available.

3. **KPDE-VF10-32:**[Make Note KP or KV]



- Pad-Mounted Double Sided Unit
- Envirotemp 200 Fluid Insulation
- Model 10 – All Four switched source ways.
- Visible-Break Switch Options:
 - Two Position Visible Break – All Source & Tap Ways
- Bushing Option:
 - 15KV, 600A dead-break bushings on all 4 switch source ways, 600A dead-break bushing wells on tap ways
 - Externally Replaceable Bushing/Wells – (On all Ways)
- Construction:
 - Pad-Mounted style, Tank, Cabinet Material – 304L Stainless Steel Construction
 - Color – Bell Green
- Distribution Automation:
 - No Motor Operators/Provision [STANDARD]
- Auxiliary Switch:
 - Not Required
- Indicators:
 - Not Required
- Grounding Options:
 - Ground Stud [STANDARD]
- Fault Indicator Provisions:
 - Not Required
- Service Items:
 - 1" Drain Valve with 3/8" Sampler
 - Penta-Head door bolt [STANDARD]
- Decals:
 - Danger High Voltage
 - Non-PCB

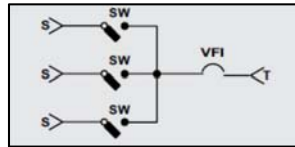
Table 1. Ratings for VFI Switchgear and Load-Break Switch*

Nominal Voltage		15 kV	15 kV
Maximum Design Voltage, kV		15.5	15.5
BIL, kV		95	95
1-minute Withstand Voltage (60 Hz), kV		35	35
Momentary Current, 10 cycles (sym.), kA		12.5	16.0
1-second Withstand Current (sym.), kA		12.5	16.0
Vacuum Fault Interrupter	Continuous Current, (max.), A	600**	600**
	Interrupting Current (sym./asym.), kA	12.5/20.0	16/25.8
	Making Current (sym.), kA	12.5	16.0
	Cable Charging Interrupting Current, A	10.0	10.0
	Continuous Current, (max), A	600	600
Load-Break Switch	Load Switching, A	600	600
	Fault Making (sym./asym.), kA	12.5/20.0	16/25.8

* Continuous and short-circuit currents may be limited by ratings of selected bushings.

** 900 A and 1200 A continuous-current ratings are also available.

4. **KPDE-VF11-32:**[Make Note KP or KV]



- Pad-Mounted Double Sided Unit
- Envirotemp 200 Fluid Insulation
- Model 11 – Three switched source ways and One VFI protected tap ways.
- Fault-Interrupter Operation:
 - Three Phase Gang Trip (STANDARD)
- Visible-Break Switch Options:
 - Two Position Visible Break – All Source & Tap Ways
- Bushing Option:
 - 15KV, 600A dead-break bushings on source ways, 200A load-break bushing wells on tap ways
 - Externally Replaceable Bushing/Wells – (On all Ways)
- Controls:
 - Tri-phase Control (STANDARD)
- Control Options:
 - Time-Current Curve Card – EF Curve (STANDARD)
 - TF-Current Curve Card – TF Curve
 - Minimum Response Time Accessory – EF Curve (STANDARD)
 - Minimum Response Time Accessory – TF Curve
- Construction:
 - Pad-Mounted style, Tank, Cabinet Material – 304L Stainless Steel Construction
 - Color – Bell Green
- Distribution Automation:
 - No Motor Operators/Provision [STANDARD]
- Auxiliary Switch:
 - Not Required
- Indicators:
 - Not Required
- Grounding Options:
 - Ground Stud [STANDARD]
- Fault Indicator Provisions:
 - Not Required
- Service Items:
 - 1" Drain Valve with 3/8" Sampler
 - Penta-Head door bolt [STANDARD]
- Decals:
 - Danger High Voltage
 - Non-PCB

Table 1. Ratings for VFI Switchgear and Load-Break Switch*

Nominal Voltage		15 kV	15 kV
Maximum Design Voltage, kV		15.5	15.5
BIL, kV		95	95
1-minute Withstand Voltage (60 Hz), kV		35	35
Momentary Current, 10 cycles (sym.), kA		12.5	16.0
1-second Withstand Current (sym.), kA		12.5	16.0
Vacuum Fault Interrupter	Continuous Current, (max.), A	600**	600**
	Interrupting Current (sym./asym.), kA	12.5/20.0	16/25.8
	Making Current (sym.), kA	12.5	16.0
	Cable Charging Interrupting Current, A	10.0	10.0
	Continuous Current, (max), A	600	600
Load-Break Switch	Load Switching, A	600	600
	Fault Making (sym./asym.), kA	12.5/20.0	16/25.8

* Continuous and short-circuit currents may be limited by ratings of selected bushings.

** 900 A and 1200 A continuous-current ratings are also available.