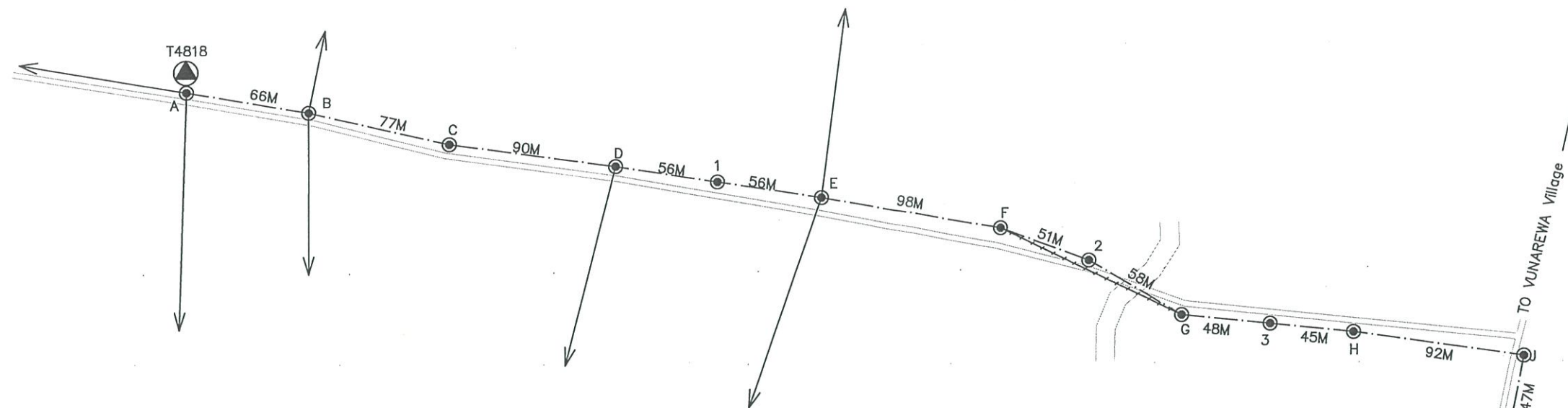


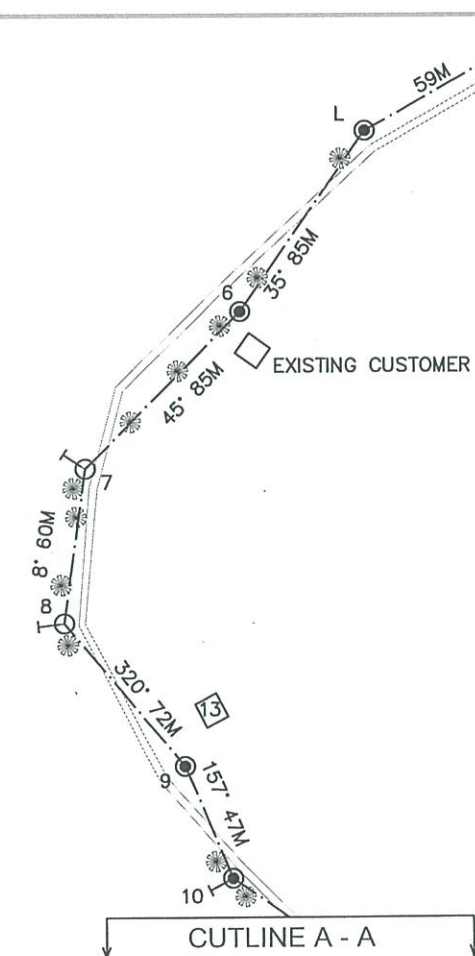
## NABITU SETTLEMENT



POLE SCHEDULE

POLE No.	POLE DESCRIPTION WOOD/CONC OR EXISTING	POLE Length and Strength m/kN	SPAN m	ANGLE OF LINE DEVIATION IN DEG.	POLE TOP DESCRIPTION OR TYPE No.	GRND	SIDE-WALK	FLY	REMARKS
A	EXIST.	EX	—	—	14A+EXIST				EXISTING TRANSFORMER POLE
B	EXIST	10.2/6	66	—	11A+EXIST				STRING 1φ HV ONLY
C	EXIST	10.2/6	77	—	11A+EXIST				" " "
D	EXIST	10.2/6	90	—	11A+EXIST				" " "
1	CONC.	10.2/6	56	0	11A+1A				" " "
E	EXIST	10.2/6	56	—	14A+EXIST				" " "
F	EXIST	10.2/6	98	—	14A+EXIST				" " "
2	CONC.	10.2/6	51	3	11A+1A				" " "
G	EXIST	10.2/6	58	—	11A+EXIST				" " "
3	CONC.	10.2/6	48	0	11A+1A				" " "
H	EXIST	10.2/6	45	—	11A+EXIST				" " "
J	EXIST	11/5.5	92	—	13A+13A+EXIST				" " "
4	CONC.	10.2/6	47	0	11A+1A				" " "
K	EXIST	10.2/6	50	—	12A+EXIST				" " "
5	CONC.	10.2/6	47	0	11A+1A				" " "
L	EXIST	10.2/6	59	—	14A+4A				STRING 1φ HV & 1φ LV
6	CONC.	11/5.5	85	10	11A+3A				" " "
7	CONC.	11/5.5	85	37	12A	1			STRING 1φ HV ONLY
8	CONC.	11/5.5	60	48	14A	1			" " "
9	CONC.	10.2/6	72	17	11A+3A				STRING 1φ HV & 1φ LV
10	CONC.	10.2/6	47	32	12A+2A	1			" " "

SHEET 1 OF 4



## LEGEND

- LV POLE
- ⊙ HV & LV POLE
- ⊙ EXISTING POLE MOUNTED TRANSFORMER
- ⊙ PROP. POLE MOUNTED TRANSFORMER
- EXISTING O/H CONDUCTOR
- - - PROPOSED O/H CONDUCTOR
- ⊥ GROUND STAY
- FLY STAY

## FIJI ELECTRICITY AUTHORITY

SUPPLY TO MAVUA SETTLEMENT.  
SIGATOKA DISTRICT  
MAVUA (SG04/14)

DRAWING NUMBER

A3 04 N86 150

SCALE 1: 2000



DRAWN	JONE	19.04.18
CHECKED	SHANDIL	10.05.18
CHIEF DRAUGHTSMAN	JONE	10.05.18
TEAM LEADER DESIGN & PLANNING	Riteh.k	10.5.18
ENGINEER	J. Lema	10/5/18
HEAD OF DEPARTMENT	David Vunise	10/5/18

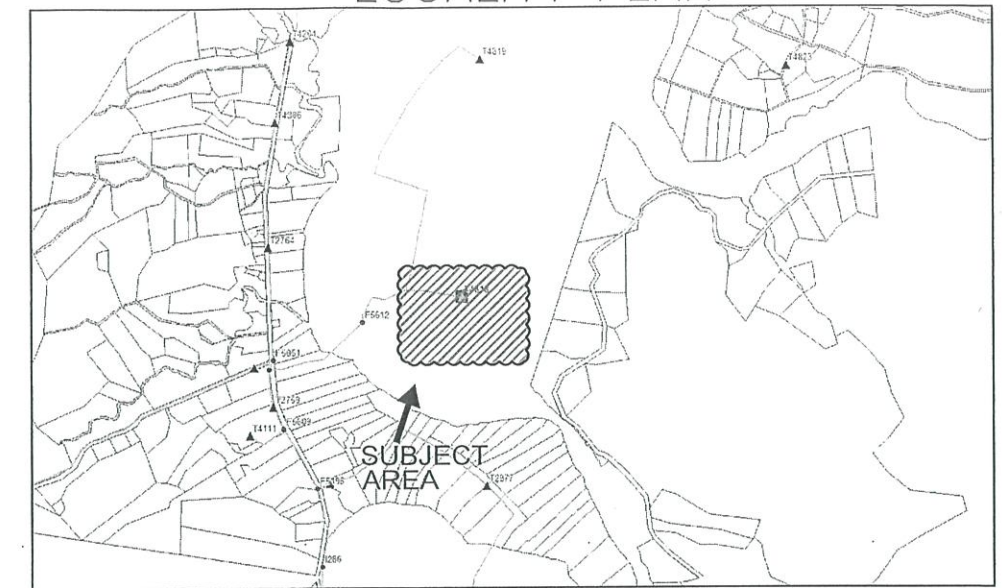
0	ORIGINAL ISSUE SI SG04/14	18.04.18	JV					
No.	REVISION	DATE	BY	CHK	PSD	APP		



A3 04 N86 150

LOCALITY PLAN

CUTLINE A - A



SUBJECT AREA

PROP. 16kVA TXF

POLE SCHEDULE

POLE SCHEDULE									
POLE No.	POLE DESCRIPTION WOOD/CONC OR EXISTING	POLE Length and Strength m/kN	SPAN m	ANGLE OF LINE DEVIATION IN DEG.	POLE TOP DESCRIPTION OR TYPE No.				REMARKS
						GRND	SIDE- WALK	FLY	
11	CONC	10.2/6	80	0	11A+1A				STRING 1ϕ HV & 1ϕ LV
12	CONC.	10.2/6	62	5	11A+1A				" " " "
13	CONC.	10.2/6	82	23	12A+2A	1			" " " "
14	CONC.	10.2/6	45	21	12A+2A	1			" " " "
15	CONC.	11/5.5	80	12	14A+4A+REM	1			INSTALL 16kVA TRANSFORMER
16	CONC.	10.2/6	50	9	11A+1A				STRING 1ϕ HV & 1ϕ LV
17	CONC.	10.2/6	75	6	11A+1A				" " " "
18	CONC.	11/5.5	72	19	11A+1A				" " " "
19	CONC.	10.2/6	77	12	11A+1A				
20	CONC.	10.2/6	53	25	14A+4A	1			" " " "
21	CONC.	10.2/6	70	32	12A+3A	1			" " " "
22	CONC.	10.2/6	62	22	12A	1			STRING 1ϕ HV ONLY
23	CONC.	10.2/6	65	5	11A				" " " "
24	CONC.	10.2/6	50	16	11A				" " " "
25	CONC.	10.2/6	78	6	11A				" " " "
26	CONC.	10.2/6	85	5	11A				" " " "

SHEET 2 OF 4

CUTLINE B - B



DRAWN	JONE	19.04.18
CHECKED	SHANDIL	10.05.18
CHIEF DRAUGHTSMAN	JONE	10.05.18
TEAM LEADER DESIGN & PLANNING	Rifoh. k	10.05.18
ENGINEER	JLewa	10/5/18
HEAD OF DEPARTMENT	A. M. M.	10/5/18

## FIJI ELECTRICITY AUTHORITY

SUPPLY TO MAVUA SETTLEMENT.  
SIGATOKA DISTRICT  
MAVUA (SG04/14)

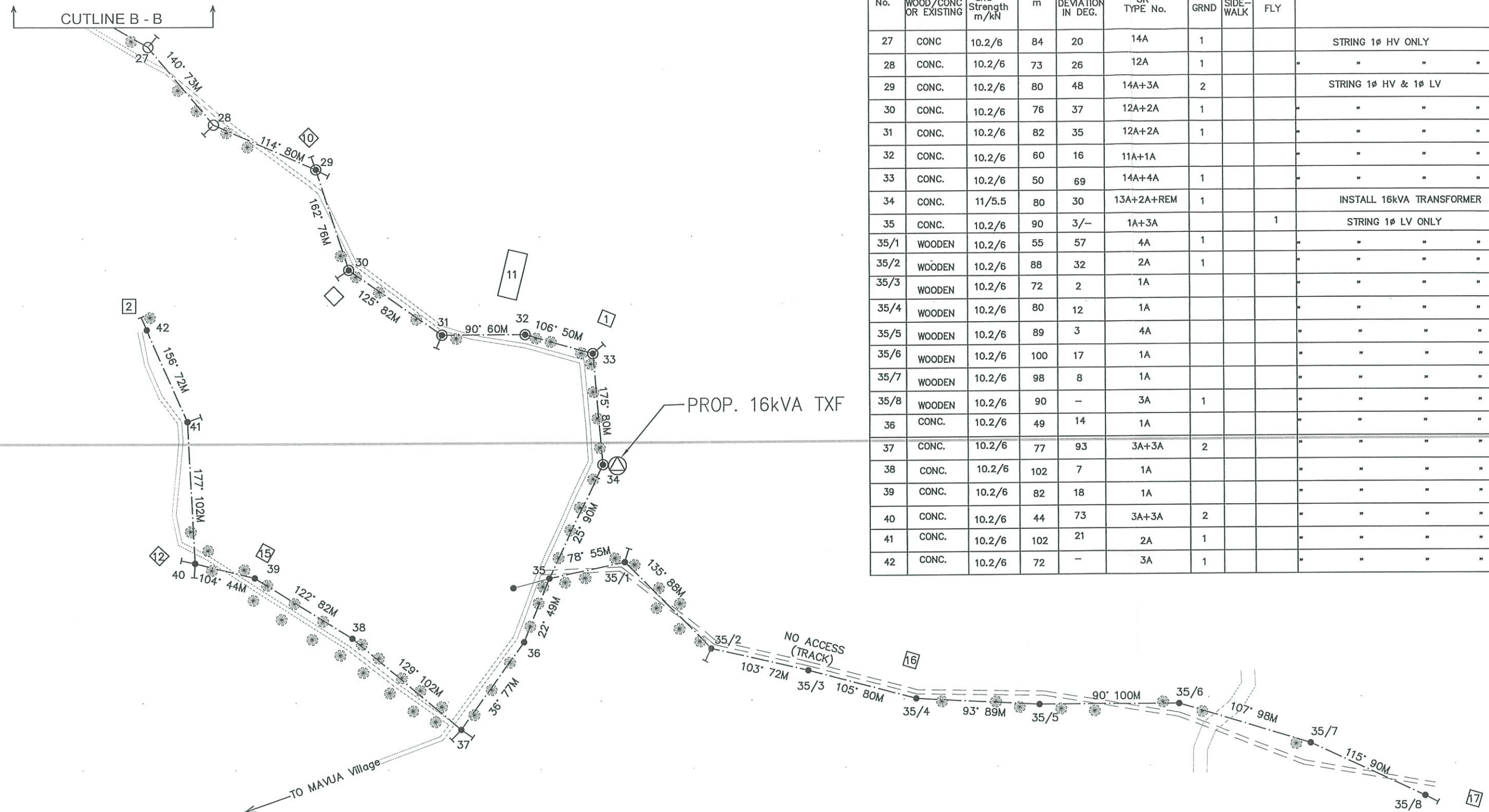
DRAWING NUMBER

A3 04 N86 150

SCALE 1 : 2000

No.	REVISION	DATE	BY	CHK	PSD	APP
0	ORIGINAL ISSUE SI SG04/14	18.04.18	JV			





POLE SCHEDULE									
POLE No.	POLE DESCRIPTION WOOD/CONC OR EXISTING	POLE Length and Strength m/kN	SPAN m	ANGLE OF LINE DEVIATION IN DEG.	POLE TOP DESCRIPTION OR TYPE No.				REMARKS
						GRND	SIDE-WALK	FLY	
27	CONC	10.2/6	84	20	14A	1			STRING 1Ø HV ONLY
28	CONC.	10.2/6	73	26	12A	1			" " "
29	CONC.	10.2/6	80	48	14A+3A	2			STRING 1Ø HV & 1Ø LV
30	CONC.	10.2/6	76	37	12A+2A	1			" " "
31	CONC.	10.2/6	82	35	12A+2A	1			" " "
32	CONC.	10.2/6	60	16	11A+1A				" " "
33	CONC.	10.2/6	50	69	14A+4A	1			" " "
34	CONC.	11/5.5	80	30	13A+2A+REM	1			INSTALL 16kVA TRANSFORMER
35	CONC.	10.2/6	90	3/-	1A+3A			1	STRING 1Ø LV ONLY
35/1	WOODEN	10.2/6	55	57	4A	1			" " "
35/2	WOODEN	10.2/6	88	32	2A	1			" " "
35/3	WOODEN	10.2/6	72	2	1A				" " "
35/4	WOODEN	10.2/6	80	12	1A				" " "
35/5	WOODEN	10.2/6	89	3	4A				" " "
35/6	WOODEN	10.2/6	100	17	1A				" " "
35/7	WOODEN	10.2/6	98	8	1A				" " "
35/8	WOODEN	10.2/6	90	—	3A	1			" " "
36	CONC.	10.2/6	49	14	1A				" " "
37	CONC.	10.2/6	77	93	3A+3A	2			" " "
38	CONC.	10.2/6	102	7	1A				" " "
39	CONC.	10.2/6	82	18	1A				" " "
40	CONC.	10.2/6	44	73	3A+3A	2			" " "
41	CONC.	10.2/6	102	21	2A	1			" " "
42	CONC.	10.2/6	72	—	3A	1			" " "

SHEET 3 OF 4

0	ORIGINAL ISSUE SI SG04/14	18.04.18	JV						
No.	REVISION	DATE	BY	CHK	PSD	APP			



DRAWN	JONE	19.04.18
CHECKED	SHANDIL	10.05.18
CHIEF DRAUGHTSMAN	JONE	10-05-18
TEAM LEADER DESIGN & PLANNING	Ritish.k	10.5.18
ENGINEER	Levan	10.5.18
HEAD OF DEPARTMENT	David Mac	10/5/18

## FIJI ELECTRICITY AUTHORITY

SUPPLY TO MAVUA SETTLEMENT.  
SIGATOKA DISTRICT  
MAVUA (SG04/14)

DRAWING NUMBER

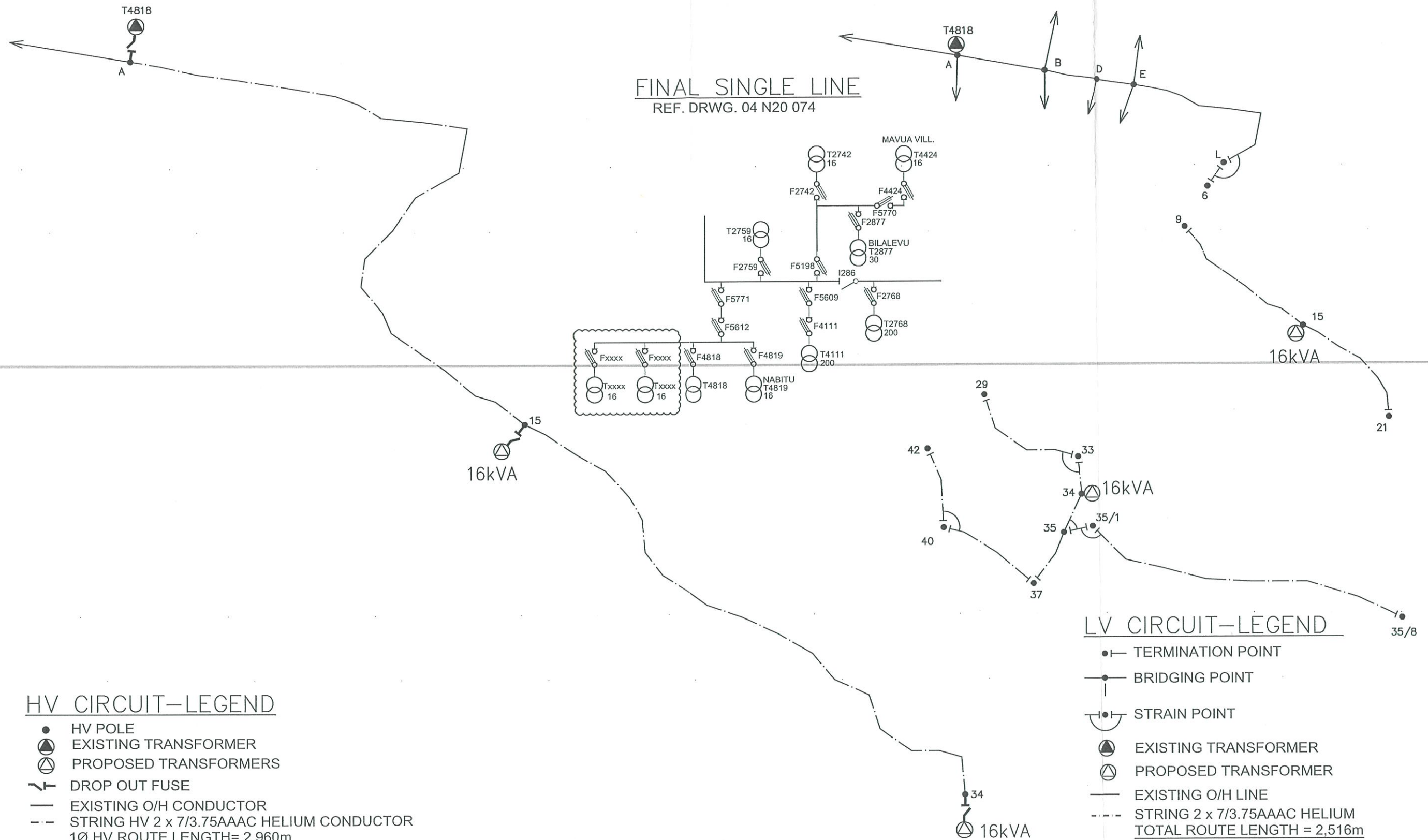
A3 04 N86 150

SCALE 1 : 2000



## FINAL HV CIRCUIT

## FINAL LV CIRCUIT

FINAL SINGLE LINE  
REF. DRWG. 04 N20 074

## HV CIRCUIT-LEGEND

- HV POLE
  - ⊗ EXISTING TRANSFORMER
  - ⊕ PROPOSED TRANSFORMERS
  - ⌋ DROP OUT FUSE
  - EXISTING O/H CONDUCTOR
  - - - STRING HV 2 x 7/3.75AAAC HELIUM CONDUCTOR
- 1Ø HV ROUTE LENGTH= 2,960m

## LV CIRCUIT-LEGEND

- TERMINATION POINT
  - BRIDGING POINT
  - ⌋ STRAIN POINT
  - ⊗ EXISTING TRANSFORMER
  - ⊕ PROPOSED TRANSFORMER
  - EXISTING O/H LINE
  - - - STRING 2 x 7/3.75AAAC HELIUM
- TOTAL ROUTE LENGTH = 2,516m

SHEET 4 OF 4

No.	REVISION	DATE	BY	CHK	PSD	APP
0	ORIGINAL ISSUE SI SG04/14	18.04.18	JV			



DRAWN	JONE	19.04.18
CHECKED	SHANDIL	10.05.18
CHIEF DRAUGHTSMAN	JONE	10.05.18
TEAM LEADER DESIGN & PLANNING	Ritesh K	10.5.18
ENGINEER	Leyon	10.8.18
HEAD OF DEPARTMENT	John He	10/8/18

## FIJI ELECTRICITY AUTHORITY

SUPPLY TO MAVUA SETTLEMENT.  
SIGATOKA DISTRICT  
MAVUA (SG04/14)

DRAWING NUMBER

A3 04 N86 150

SCALE 1 : 2000