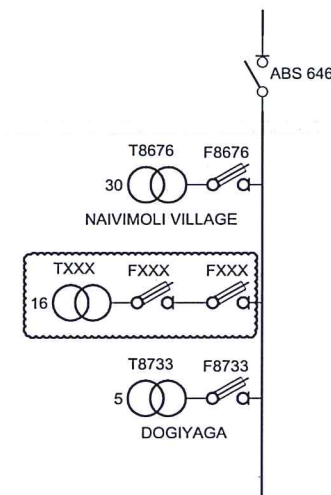


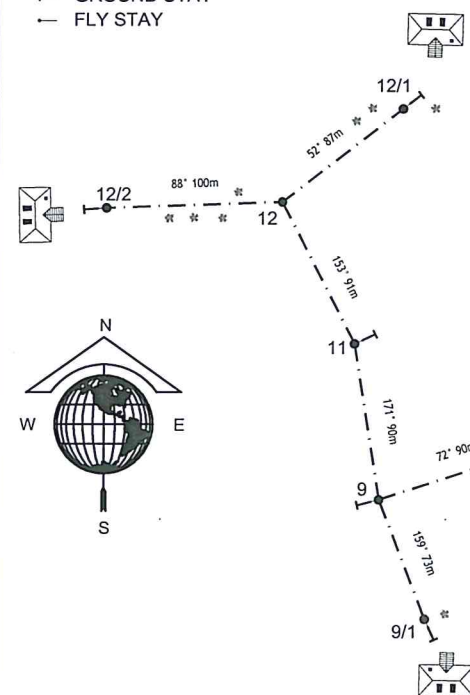
SCOPE OF WORK:

1. ERECT 10.2M WOODEN POLE AT LOCATION MARKED 3,4,6,7,8,9,9/1,11,12,12/1,12/2,5/2,5/2/1,5/2/2,5/2/3,5/2/4,5/2/5,5/2/6,5/3,5/4,5/7,5/8 & 5/9.
2. ERECT 11M WOODEN POLE AT LOCATION MARKED 5,5/1,5/5 AND 5/6.
3. ERECT 15.5M WOODEN POLE AT LOCATION MARKED 1 AND 2.
4. INSTALL 16KVA TRANSFORMER AT POLE MARKED 5/1.
5. STRING SINGLE PHASE HV HELIUM CONDUCTOR FROM POLE A TO 5/1 VIA POLES 1,2,3,4 & 5.
6. STRING SINGLE PHASE LV HELIUM CONDUCTOR ON POLE MARKED 2,3,4,5,6,7,8,9,9/1,11,12,12/1,12/2,5/1,5/2,5/2/1,5/2/2,5/2/3,5/2/4,5/2/5,5/2/6,5/3,5/4,5/5,5/6,5/7,5/8 & 5/9.

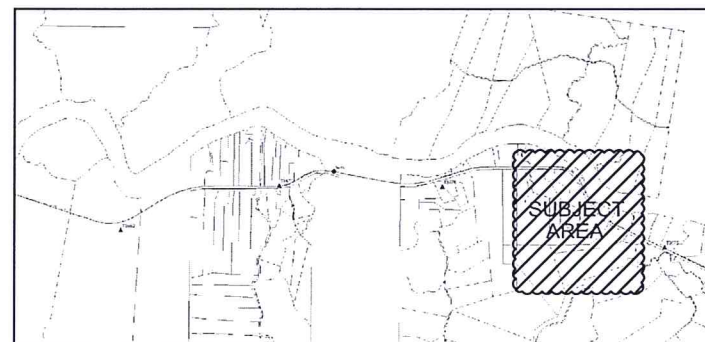
SINGLE LINE DIAGRAM:
DRWG No. : 04 N30 015

LEGEND

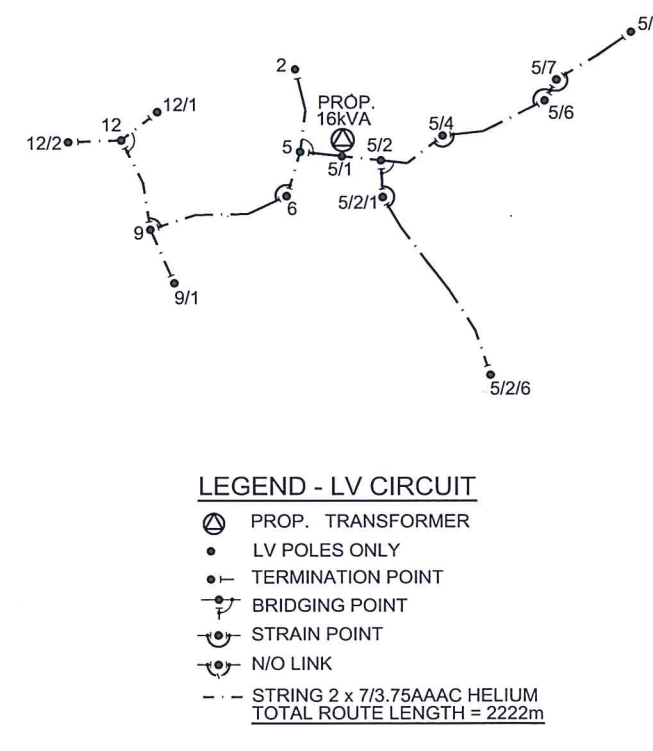
- LV POLE
- HV POLE
- ⊙ HV & LV POLE
- ⊗ PROP. POLE MOUNTED TRANSFORMER
- ⊗ EXIST. POLE MOUNTED TRANSFORMER
- EXISTING O/H CONDUCTOR
- - - PROPOSED O/H CONDUCTOR
- ⊥ GROUND STAY
- ⊥ FLY STAY



LOCALITY PLAN



FINAL - LV CIRCUIT

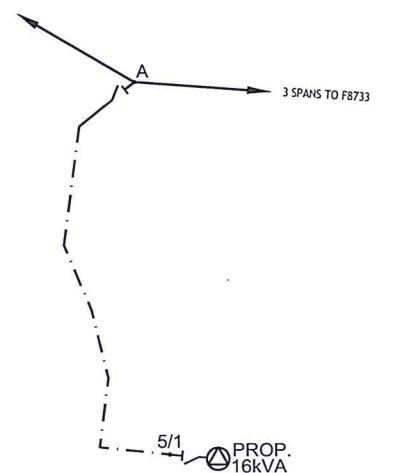


LEGEND - LV CIRCUIT

- ⊗ PROP. TRANSFORMER
- LV POLES ONLY
- ⊥ TERMINATION POINT
- ⊥ BRIDGING POINT
- ⊥ STRAIN POINT
- ⊥ N/O LINK
- - - STRING 2 x 7/3.75AAAC HELIUM

TOTAL ROUTE LENGTH = 2222m

FINAL - HV CIRCUIT



LEGEND - HV CIRCUIT

- HV POLE
- ⊗ EXIST. POLE MOUNTED TRANSFORMER
- ⊗ PROP. POLE MOUNTED TRANSFORMER
- ⊥ DROP OUT FUSE/ABS
- EXISTING O/H CONDUCTOR
- - - STRING 2 x 7/3.75AAAC HELIUM CONDUCTOR.

TOTAL ROUTE LENGTH = 496m

POLE SCHEDULE									
POLE NO	POLE DESCRIPTION (WOOD, CONC OR EXISTING)	POLE LENGTH & STRENGTH (m/kN)	SPAN (m)	ANGLE OF LINE DEVIATION (°)	POLE DRESSING	STAYS			REMARKS
						GRND	FLY	GRND & FLY	
A	EXIST	EXIST	-	-	EXIST+18A		1		INSTALL DOF
1	WOODEN	15.5	39	44	14A	2			STRING 1φ HV ONLY
2	"	"	137	30	12A+3A	2			STRING 1φ HV & 1φ LV ONLY
3	"	11/5.5	80	9	11A+1A				"
4	"	10.2/6	80	21	12A+2A	1			"
5	"	11/5.5	80	10	13A+13A+1A+3A	1			"
6	"	10.2/6	88	48	4A	1			STRING 1φ LV ONLY
7	"	"	81	24	2A	1			"
8	"	"	100	17	1A				"
9	"	"	90	99	4A+3A	1			"
9/1	"	"	73	-	3A	1			"
11	"	"	90	18	1A	1			"
12	"	"	91	65	4A+3A				"
12/1	"	"	100	-	3A	1			"
12/2	"	"	87	-	3A	1			"
5/1	"	11/5.5	80	-	13A+1A+REM	1			INSTALL 16kVA TXF
5/2	"	10.2/6	75	-	1A+3A	1			STRING 1φ LV ONLY
5/2/1	"	"	70	28	2A	1			"
5/2/2	"	"	68	6	1A				"
5/2/3	"	"	88	1	1A				"
5/2/4	"	"	63	5	1A				"
5/2/5	"	"	90	14	1A				"
5/2/6	"	"	90	-	3A	1			"
5/3	"	"	51	44	4A	1			"
5/4	"	"	85	32	2A	1			"
5/5	"	11/5.5	78	21	2A	1			"
5/6	"	"	131	34	2A	1			"
5/7	"	10.2/6	46	30	2A	1			"
5/8	"	"	91	4	1A				"
5/9	"	"	76	-	3A	1			"

No.	REVISION	DATE	BY	CHK	PSD	APP	REFERENCE	CAD FILENAME	DRAWING No.	TITLE
0	ORIGINAL ISSUE	20.04.18	SK							

DRAWN	SHANE	20.04.18
CHECKED	V.S	25/4/18
CHIEF DRAUGHTSMAN	S.R.	25/4/18
TEAM LEADER	Rajiv	25/4/18
ENGINEER	Rajiv	25/4/18
HEAD OF DEPARTMENT	Prasanna Prasad	

ENERGY FIJI LIMITED

SUPPLY TO DALOKO SETTLEMENT
DREKETI DISTRICT
DALOKO AREA(LAB13-16)

DRAWING NUMBER

A1 04 N91 008

SCALE 1:2000