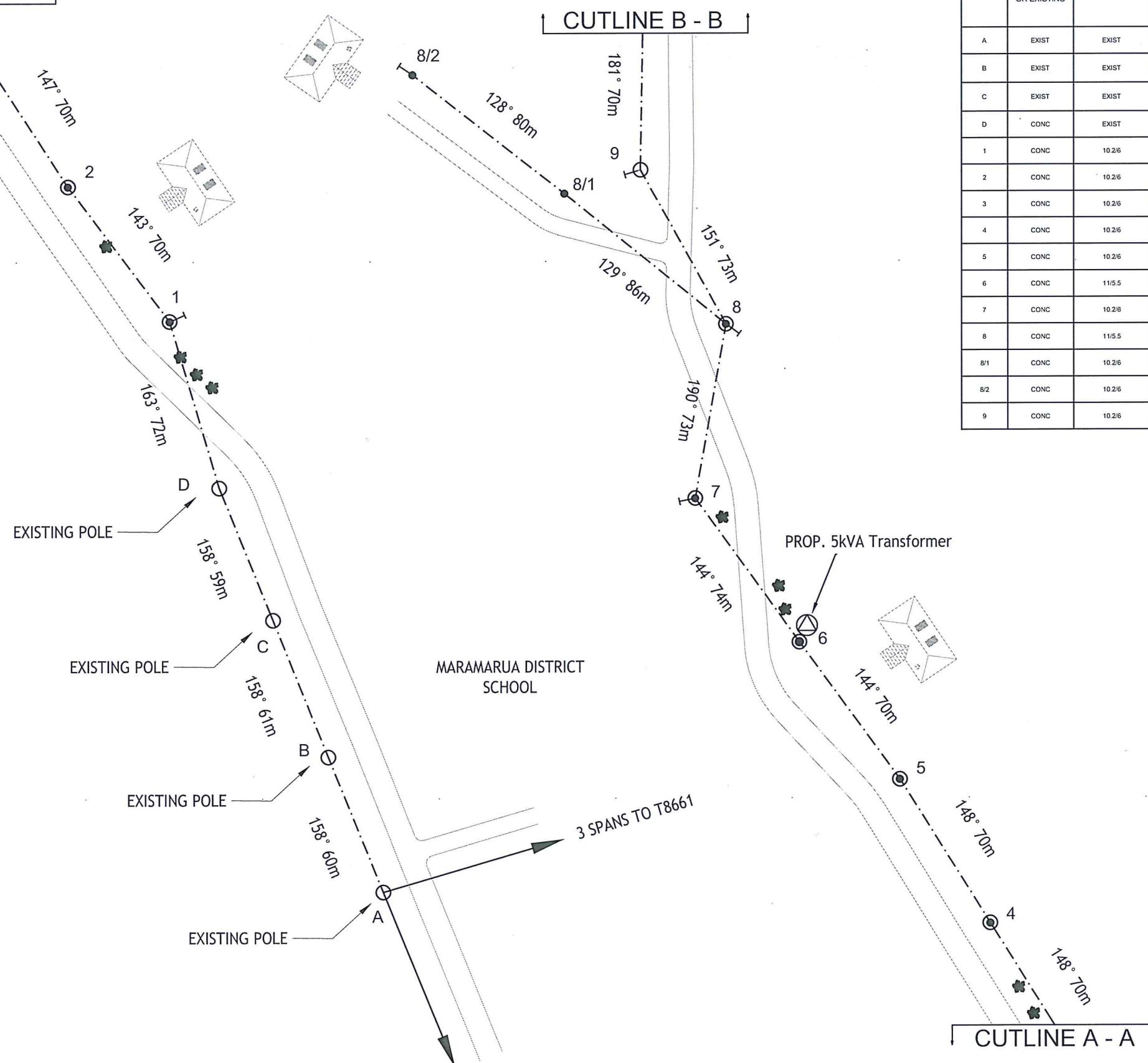


CUTLINE A - A

CUTLINE B - B



POLE SCHEDULE								
POLE NO	POLE DESCRIPTION (WOOD, CONC OR EXISTING)	POLE LENGTH & STRENGTH (m/kN)	SPAN (m)	ANGLE OF LINE DEVIATION (°)	POLE DRESSING	STAYS		
						GROUND	FLY	GROUND & FLY
A	EXIST	EXIST	-	-	EXIST+13B			EXISTING 1HV
B	EXIST	EXIST	60	0	11B			UPGRADE TO 3 φ HV ONLY
C	EXIST	EXIST	61	0	11B			* * *
D	CONC	EXIST	59	5	11B			* * *
1	CONC	10.2/6	72	20	12B+3A	1		STRING 3 φ HV & 1 φ LV
2	CONC	10.2/6	70	4	14B+1A			* * *
3	CONC	10.2/6	70	1	11B+1A			* * *
4	CONC	10.2/6	70	0	11B+1A			* * *
5	CONC	10.2/6	70	4	11B+1A			* * *
6	CONC	11/5.5	70	0	11B+1A+REM			INSTALL 5kVA TRANSFORMER
7	CONC	10.2/6	74	46	14B+4A	1		* * *
8	CONC	11/5.5	73	39	12B+4A	1		* * *
8/1	CONC	10.2/6	86	1	1A			STRING 1 φ LV ONLY
8/2	CONC	10.2/6	80	-	3A	1		* * *
9	CONC	10.2/6	73	30	12B	1		STRING 3 φ HV ONLY

LEGEND

- LV POLE
- ⊙ HV & LV POLE
- ⊗ EXISTING POLE MOUNTED TRANSFORMER
- ⊕ PROP. POLE MOUNTED TRANSFORMER
- EXISTING O/H CONDUCTOR
- - - PROPOSED O/H CONDUCTOR
- ⊥ GROUND STAY
- FLY STAY

SHEET 1 OF 6

FIJI ELECTRICITY AUTHORITY

SUPPLY TO NABITI VILLAGE
DREKETI DISTRICT
NABITI VILLAGE (LAB12/16)

DRAWING NUMBER

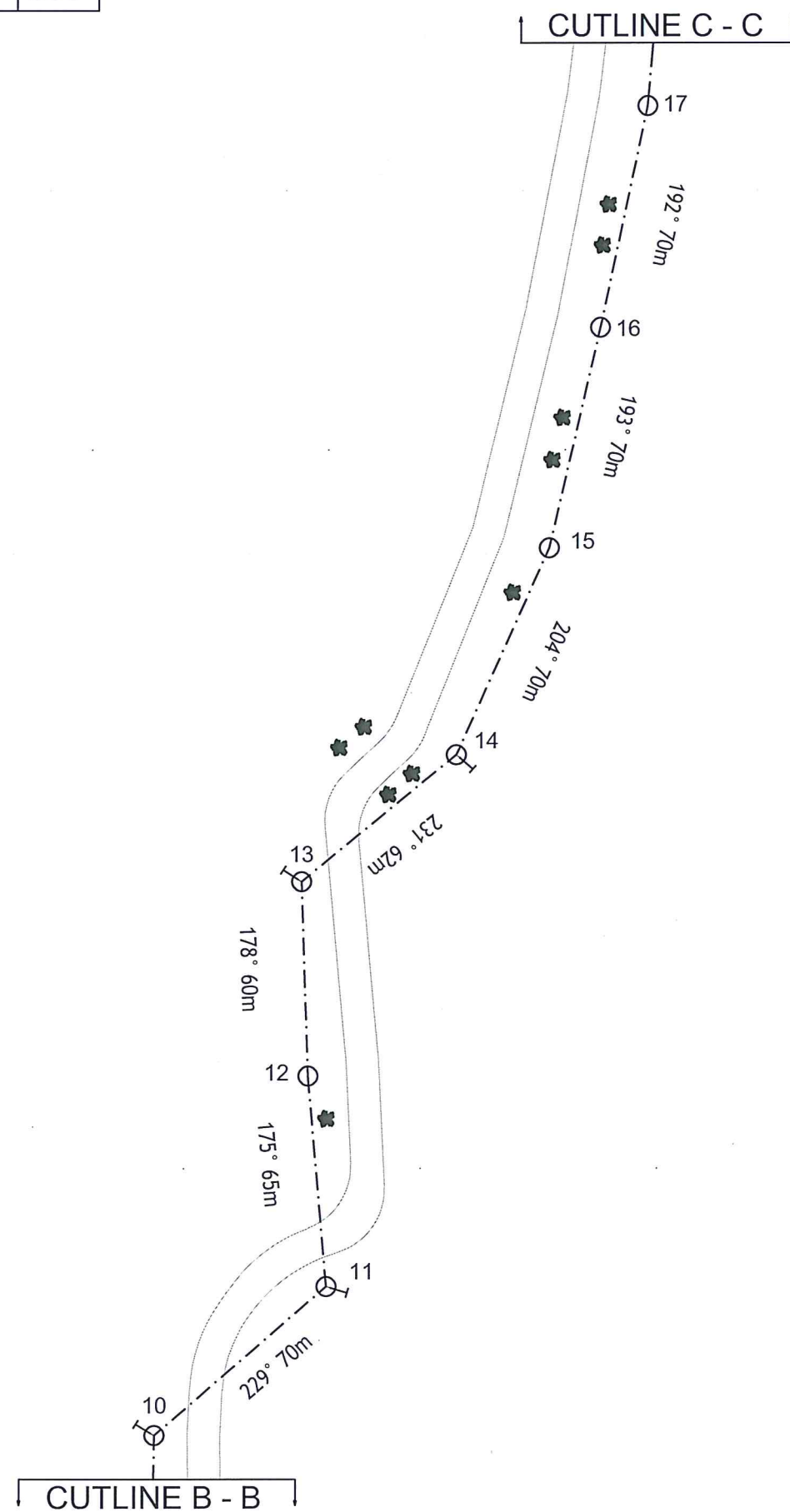
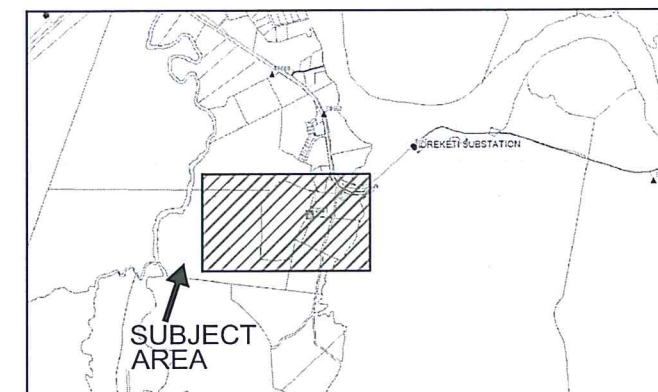
A3 04 N91 006

SCALE 1 : 2000



DRAWN	JONE	06.04.18
CHECKED	LOWANE	30.04.18
CHIEF DRAUGHTSMAN	JONE	26.4.18
TEAM LEADER DESIGN & PLANNING	Ritesh.E	01/05/18
ENGINEER	Rajiv.S	01/5/18
HEAD OF DEPARTMENT	Arjun	01/5/18

No.	REVISION	DATE	BY	CHK	PSD	APP
0	ORIGINAL ISSUE SI LAB12/16	06.04.18	JV			



POLE SCHEDULE									
POLE NO	POLE DESCRIPTION (WOOD, CONC OR EXISTING)	POLE LENGTH & STRENGTH (m/kN)	SPAN (m)	ANGLE OF LINE DEVIATION (°)	POLE DRESSING	STAYS			REMARKS
						GROUND	FLY	GRND & FLY	
10	CONC	10.2/6	70	48	14B	1			STRING 3 φ HV ONLY
11	CONC	10.2/6	70	54	14B	1			" " "
12	CONC	10.2/6	65	3	11B				" " "
13	CONC	10.2/6	60	53	14B	1			" " "
14	CONC	10.2/6	62	27	12B	1			" " "
15	CONC	10.2/6	70	11	11B				" " "
16	CONC	10.2/6	70	1	11B				" " "
17	CONC	10.2/6	70	7	11B				" " "

SHEET 2 OF 6

FIJI ELECTRICITY AUTHORITY

SUPPLY TO NABITI VILLAGE
DREKETI DISTRICT
NABITI VILLAGE (LAB12/16)

DRAWING NUMBER

A3 04 N91 006

SCALE 1 : 2000

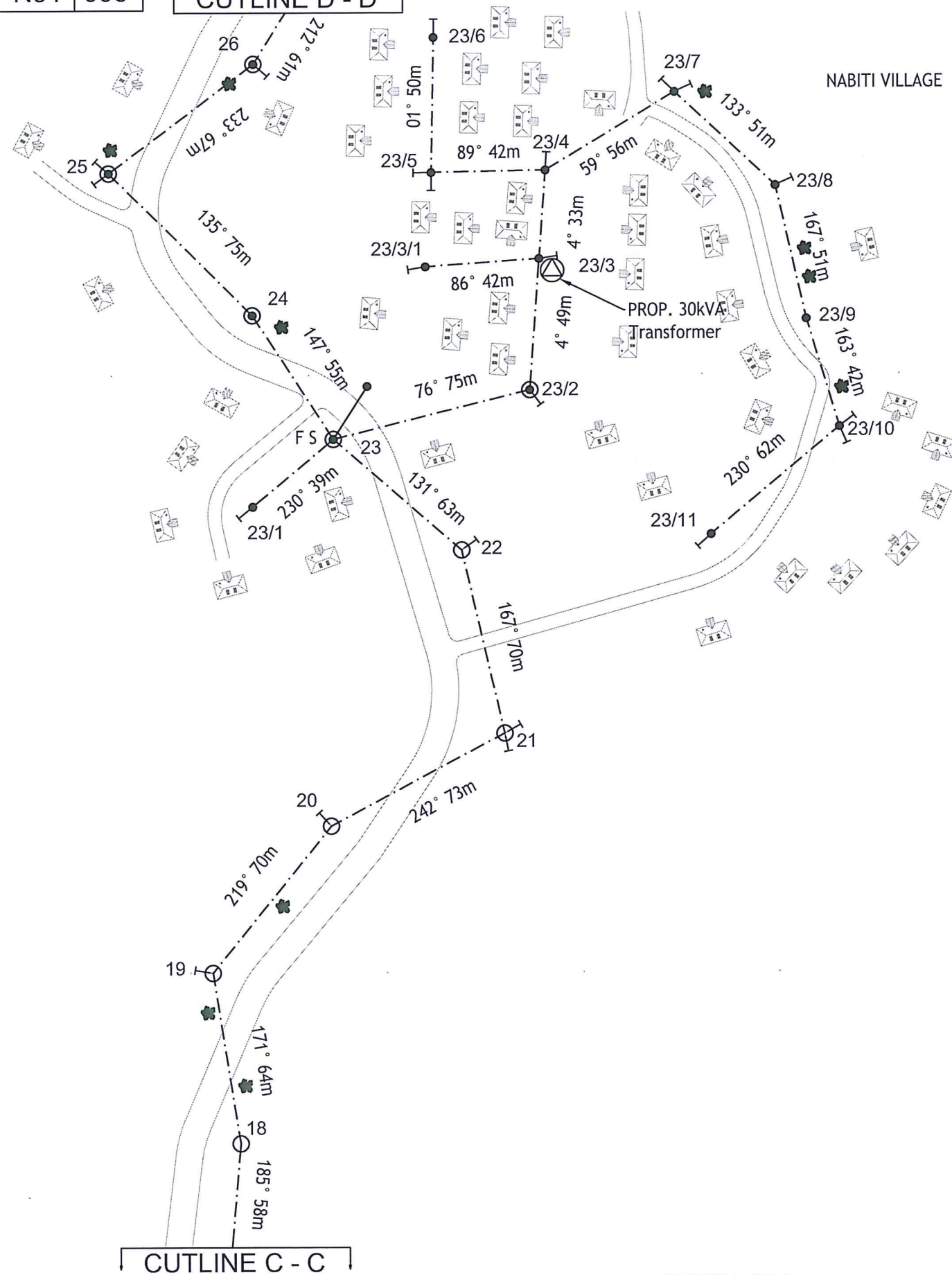


DRAWN	JONE	06.04.18
CHECKED	LOWANE	30.04.18
CHIEF DRAUGHTSMAN	JONE	26.04.18
TEAM LEADER DESIGN & PLANNING	Ritah L	01/05/18
ENGINEER	Rajiv. S	01/5/18
HEAD OF DEPARTMENT	Benetine	01/5/18

0	ORIGINAL ISSUE SI LAB12/16	06.04.18	JV			
No.	REVISION	DATE	BY	CHK	PSD	APP

A3 04 N91 006

CUTLINE D - D



SHEET 3 OF 6

POLE SCHEDULE									
POLE NO	POLE DESCRIPTION (WOOD, CONC OR EXISTING)	POLE LENGTH & STRENGTH (m/kN)	SPAN (m)	ANGLE OF LINE DEVIATION (°)	POLE DRESSING	STAYS			REMARKS
						GROUND	FLY	GRND & FLY	
18	CONC	10.2/6	58	14	11B				STRING 3 φ HV ONLY
19	CONC	10.2/6	64	48	14B	1			" " "
20	CONC	10.2/6	70	23	12B	1			" " "
21	CONC	10.2/6	73	75	13B+13B	2			" " "
22	CONC	10.2/6	70	36	12B	1			" " "
23	CONC	11/5.5	63	16/-	13B+13B+3A+2B		1		STRING 3 φ HV & 3 φ LV
23/1	CONC	10.2/6	39	-	3B	1			STRING 3 φ LV ONLY
23/2	CONC	10.2/6	75	72	14B+4B	1			STRING 3 φ HV & 3 φ LV
23/3	CONC	11/5.5	49	0/-	13B+1B+3B+REM	1			INSTALL 30kVA TRANSFORMER
23/3/1	CONC	10.2/6	42	-	3B	1			STRING 3 φ LV ONLY
23/4	CONC	10.2/6	33	30/-	3B+2B	1			" " "
23/5	CONC	10.2/6	42	88	3B+3B	2			" " "
23/6	CONC	10.2/6	50	-	3B	1			" " "
23/7	CONC	11/5.5	56	74	4B	2			" " "
23/8	CONC	10.2/6	51	34	2B	1			" " "
23/9	CONC	10.2/6	51	4	1B				" " "
23/10	CONC	10.2/6	42	67	4B	2			" " "
23/11	CONC	10.2/6	62	-	3B	1			" " "
24	CONC	10.2/6	55	12	11A+1B				STRING 1 φ HV & 3 φ LV
25	CONC	10.2/6	75	98	13A+13A+3B+3B	2			" " "
26	CONC	10.2/6	67	21	12A+2B	1			" " "

FIJI ELECTRICITY AUTHORITY

SUPPLY TO NABITI VILLAGE
DREKETI DISTRICT
NABITI VILLAGE (LAB12/16)

DRAWING NUMBER

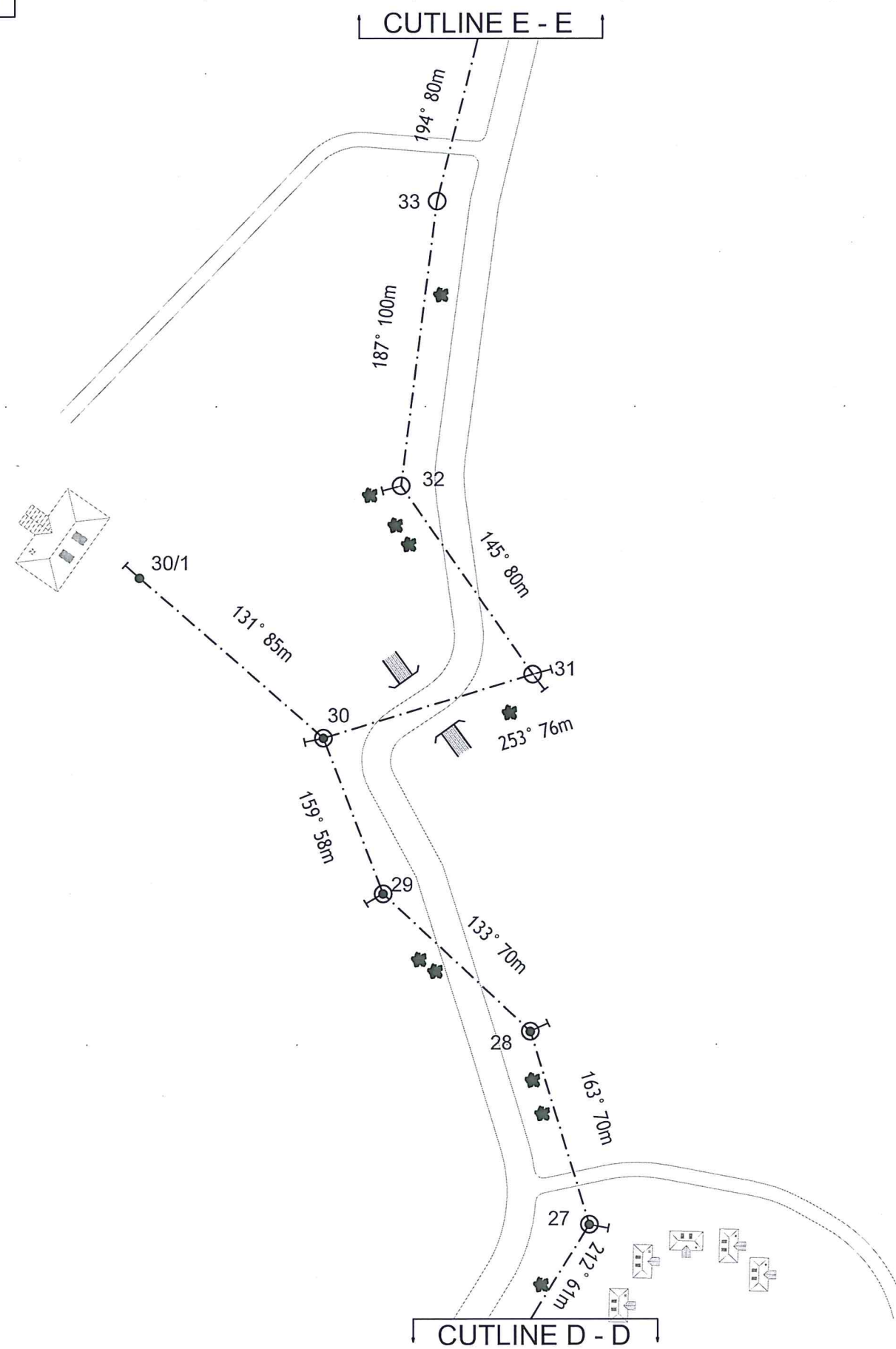
A3 04 N91 006

SCALE 1 : 2000



DRAWN	JONE	06.04.18
CHECKED	10 WANE.	01/05/18
CHIEF DRAUGHTSMAN	10 WANE.	01/05/18
TEAM LEADER DESIGN & PLANNING	Rishik	01/05/18
ENGINEER	Rajiv S	01/05/18
HEAD OF DEPARTMENT	Arjun Patel	01/05/18

0	ORIGINAL ISSUE SI LAB12/16	06.04.18	JV				
No.	REVISION	DATE	BY	CHK	PSD	APP	



POLE SCHEDULE									
POLE NO	POLE DESCRIPTION (WOOD, CONC OR EXISTING)	POLE LENGTH & STRENGTH (m/kN)	SPAN (m)	ANGLE OF LINE DEVIATION (°)	POLE DRESSING	STAYS			REMARKS
						GROUND	FLY	GRND & FLY	
27	CONC	102/6	61	49	14A+4B	1			STRING 1 ϕ HV & 3 ϕ LV
28	CONC	102/6	70	30	12A+2A	1			STRING 1 ϕ HV & 1 ϕ LV
29	CONC	102/6	70	26	12A+2A	1			. . .
30	CONC	102/6	58	28/-	13A+13A+2A	1			. . .
30/1	CONC	102/6	85	-	3A	1			STRING 1 ϕ LV ONLY
31	CONC	102/6	76	108	13A+13A	2			STRING 1 ϕ HV ONLY
32	CONC	102/6	80	42	14A	1			. . .
33	CONC	102/6	100	7	11A				. . .

SHEET 4 OF 6

FIJI ELECTRICITY AUTHORITY

SUPPLY TO NABITI VILLAGE
DREKETI DISTRICT
NABITI VILLAGE (LAB12/16)

DRAWING NUMBER

A3 04 N91 006

SCALE 1 : 2000



DRAWN	JONE	06.04.18
CHECKED	LOWANE	30.04.18
CHIEF DRAUGHTSMAN	Jone	26.04.18
TEAM LEADER DESIGN & PLANNING	Rish-k	01/05/18
ENGINEER	Rajiv. S	01/5/18
HEAD OF DEPARTMENT	Antoine	01/5/18

No.	REVISION	DATE	BY	CHK	PSD	APP
0	ORIGINAL ISSUE SI LAB12/16	06.04.18	JV			