

LEGEND

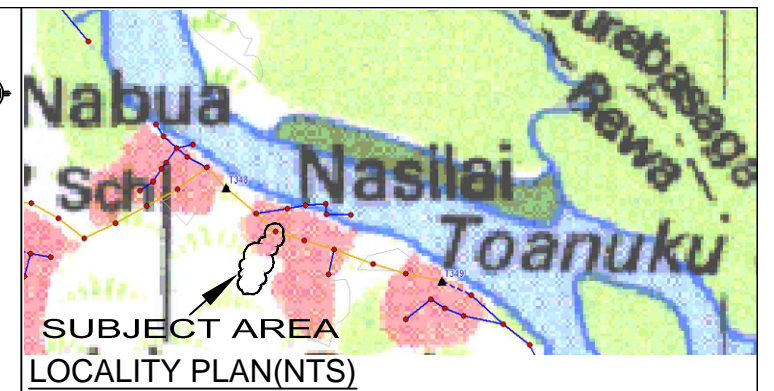
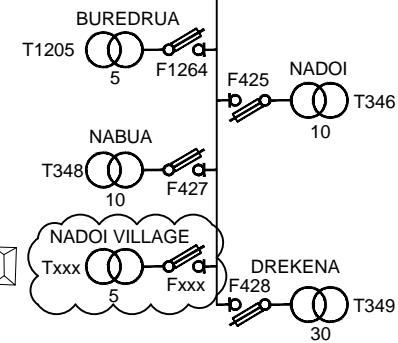
- LV POLE
- ⊙ HV & LV POLE
- ⊕ PROP. POLE MOUNTED TRANSFORMER
- ⬤ EXIST. POLE MOUNTED TRANSFORMER
- EXISTING O/H CONDUCTOR
- - - LV U/G CABLE
- - - PROPOSED O/H CONDUCTOR
- └─ GROUND STAY

LEGEND - HV CIRCUIT

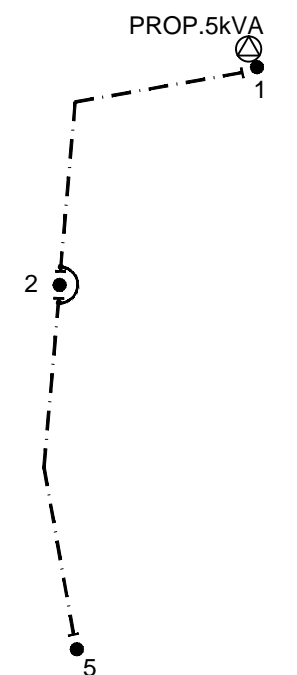
- ⊕ PROP. POLE MOUNTED TRANSFORMER
- ⚡ DROP OUT FUSE
- EXISTING O/H CONDUCTOR
- - - STRING 2 x 7/3.75AAAC HELIUM CONDUCTOR. TOTAL ROUTE LENGTH = 70m

FINAL SINGLE LINE

REF. DRWG 04 N10 018



FINAL LV CIRCUIT



LEGEND - LV CIRCUIT

- ⊕ PROP. 5KVA TRANSFORMER
- LV POLES ONLY
- └─ TERMINATION POINT
- ⊙ STRAIN POINT
- - - STRING 2 x 7/3.75AAAC HELIUM CONDUCTOR TOTAL ROUTE LENGTH = 320m

POLE SCHEDULE								
POLE NO.	POLE DESCRIPTION WOOD/CONC OR EXIST	POLE LENGTH STRENGTH m/kN	SPAN m	ANGLE OF DEVIATION IN DEG.	POLE TOP DESCRIPTION OR DRESSINGS	STAYS		REMARKS
						GRND	FLY	
A	EXIST.	EXIST	EX	EX	EXISTING+18A	1		EXISTING + PROP 1Ø HV
1	WOOD.	11/5.5	70	40	13A+3A	1		PROP 1Ø HV + PROP 1Ø LV+ PROP 5kVA
2	WOOD.	10.2/6	80	75	3A+3A	2		PROP 1Ø LV ONLY
3	WOOD.	10.2/6	80	0	1A	1		" " " " " "
4	WOOD.	10.2/6	80	15	1A	1		" " " " " "
5	WOOD.	10.2/6	80	-	3A	1		" " " " " "



DRAWN	PRIYA	07.03.18
CHECKED		
CHIEF DRAUGHTSMAN		
TEAM LEADER DESIGN & PLANNING		
ENGINEER		
HEAD OF DEPARTMENT		

ENERGY FIJI LIMITED

SUPPLY TO SIKELI DAU  
NAUSORI DISTRICT (NU06.16)  
NADOI VILLAGE, REWA

DRAWING NUMBER

A3 04 N76 120

SCALE 1:2000

0	ORIGINAL ISSUE FOR NU06.16	07.03.18	PS				
No.	REVISION	DATE	BY	CHK	PSD	APP	