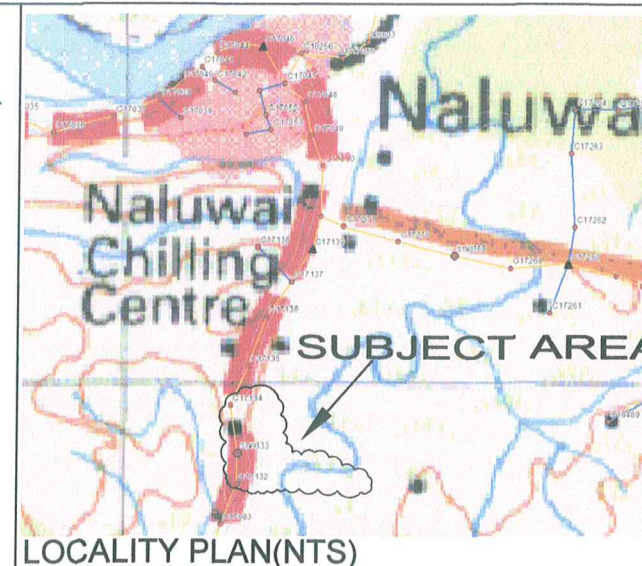


LEGEND

- LV POLE
- ⊙ HV & LV POLE
- EXISTING O/H CONDUCTOR
- - - PROPOSED O/H CONDUCTOR
- GROUND STAY

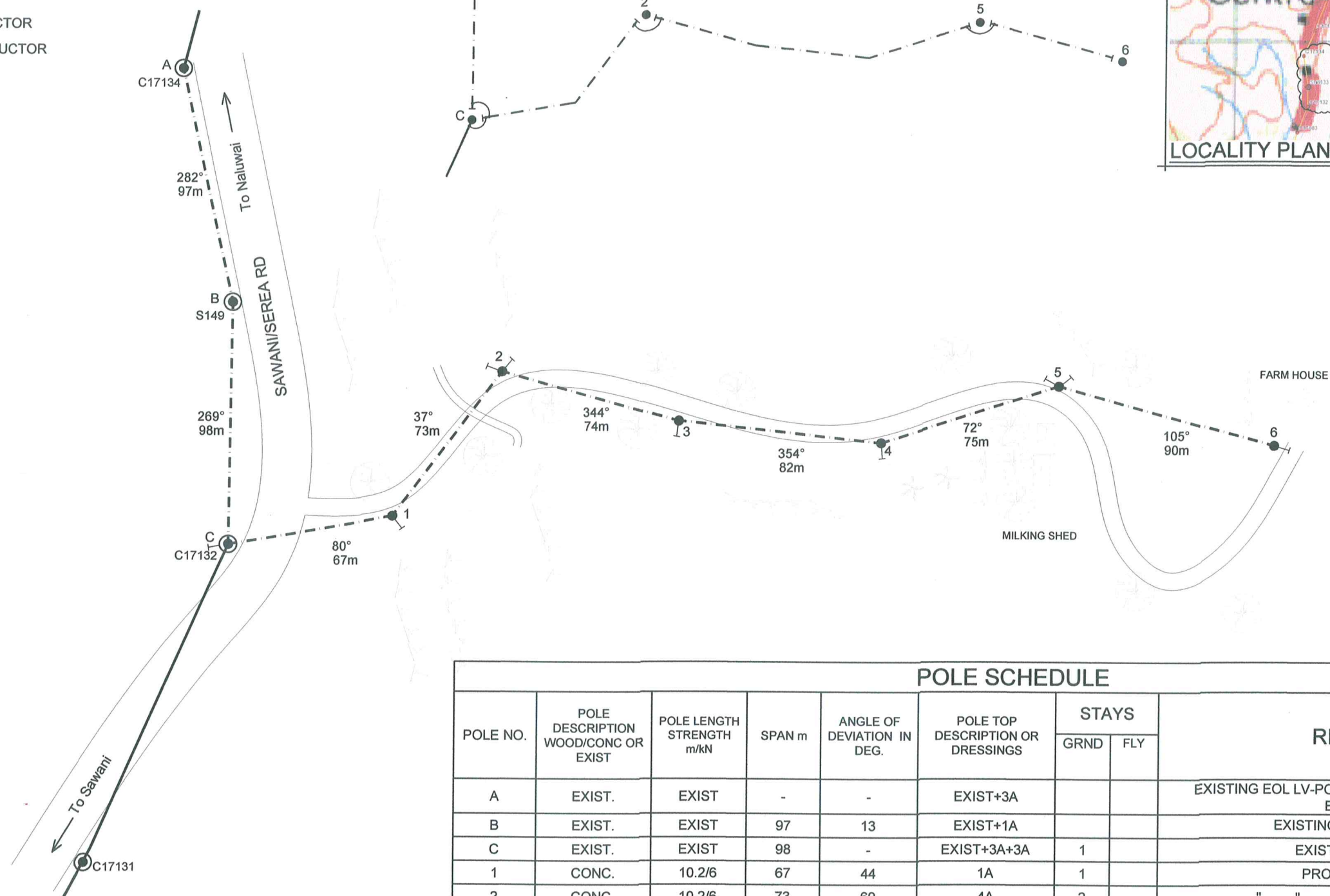
LEGEND - LV CIRCUIT

- LV POLE ONLY
- TERMINATION POINT
- BRIDGING POINT
- STRAIN POINT
- - - STRING 2 x 7/3.75AAAC HELIUM CONDUCTOR
- TOTAL ROUTE LENGTH = 656m



LOCALITY PLAN(NTS)

FINAL LV CIRCUIT



POLE SCHEDULE

POLE NO.	POLE DESCRIPTION WOOD/CONC OR EXIST	POLE LENGTH STRENGTH m/kN	SPAN m	ANGLE OF DEVIATION IN DEG.	POLE TOP DESCRIPTION OR DRESSINGS	STAYS		REMARKS
						GRND	FLY	
A	EXIST.	EXIST	-	-	EXIST+3A			EXISTING EOL LV-POINT OF CONNECTION OF NEW EXTENSION
B	EXIST.	EXIST	97	13	EXIST+1A			EXISTING ABS POLE (S149)
C	EXIST.	EXIST	98	-	EXIST+3A+3A	1		EXIST + PROP 1Ø LV
1	CONC.	10.2/6	67	44	1A	1		PROP 1Ø LV ONLY
2	CONC.	10.2/6	73	69	4A	2		" " " " " "
3	CONC.	10.2/6	74	9	1A	1		" " " " " "
4	CONC.	10.2/6	82	24	1A	1		" " " " " "
5	CONC.	10.2/6	75	33	4A	2		" " " " " "
6	CONC.	10.2/6	90	-	3A	1		" " " " " "



DRAWN	PRIYA	02.03.18
CHECKED		
CHIEF DRAUGHTSMAN		05.03.18
TEAM LEADER DESIGN & PLANNING		05.03.18
ENGINEER		05.03.18
HEAD OF DEPARTMENT		

FIJI ELECTRICITY AUTHORITY

SUPPLY TO NALUWAI FARM
NAITASIRI DISTRICT (VU02.17)
NALUWAI, NAITASIRI

DRAWING NUMBER

A3 08 N79 004

SCALE 1 : 2000

0	ORIGINAL ISSUE FOR SI VU02.17	02.03.18	PS				
No.	REVISION	DATE	BY	CHK	PSD	APP	