

SHEET 6 OF 7

POLE No.	POLE DESCRIPTION WOOD/CONC OR EXISTING	POLE Length and Strength m/kN	SPAN m	ANGLE OF LINE DEVIATION IN DEG.	POLE SCHEDULE			REMARKS
					POLE TOP DESCRIPTION OR TYPE No.	GRND	SIDE-WALK FLY	
87	CONC.	10.2/6	41	7	11B+3B+3A			STRING 3φ HV & 3φ LV
88	CONC.	10.2/6	36	3	11B+1B			" "
89	CONC.	10.2/6	28	4	11B+1B			" "
90	CONC.	11/5.5	42	91	13B+13B+3B+3B	2		" "
91	CONC.	10.2/6	32	2/-	13B+13B+3B+1B	1		" "
92	CONC.	10.2/6	37	1	1B			STRING 1φ LV ONLY
93	CONC.	10.2/6	35	-	3B	1		" "
94	CONC.	11/5.5	50	5	13B+1B+REM			INSTALL 50kVA TRANSFORMER
95	CONC.	10.2/6	61	36/-	3B+2B	1		STRING 3φ LV ONLY
96	CONC.	10.2/6	32	105	3B+3B	2		" "
97	CONC.	10.2/6	24	27	2B	1		" "
98	CONC.	10.2/6	41	24	2B	1		" "
99	CONC.	10.2/6	43	2	1B			" "
100	CONC.	10.2/6	61	24	2B	1		" "
101	CONC.	10.2/6	76	109	3B+3B	2		" "
102	CONC.	10.2/6	58	-	3B	1		" "
103	CONC.	10.2/6	47	28	2B	1		" "
104	CONC.	10.2/6	41	66	4B	1		" "
105	CONC.	10.2/6	26	83	4B	2		" "
106	CONC.	10.2/6	22	81	4B	2		" "
107	CONC.	10.2/6	43	9	1B			" "
108	CONC.	10.2/6	54	14	1B			" "
109	CONC.	10.2/6	41	86	4B	2		" "
110	CONC.	10.2/6	43	28	2B	1		" "
111	CONC.	10.2/6	54	-	3B	1		" "



DRAWN	JONE	13.04.18
CHECKED	DEEPAK	19.04.18
CHIEF DRAUGHTSMAN	Kaushal	15/4/18
TEAM LEADER DESIGN & PLANNING	Rajiv S	20/04/18
ENGINEER	Rajiv S	23/4/18
HEAD OF DEPARTMENT	Chandra	29/4/18

FIJI ELECTRICITY AUTHORITY

SUPPLY TO NAKALOU VILLAGE
DREKETI DISTRICT
NAKALOU VILLAGE (LAB01/17)

DRAWING NUMBER

A3 04 N91 007

SCALE 1 : 2000

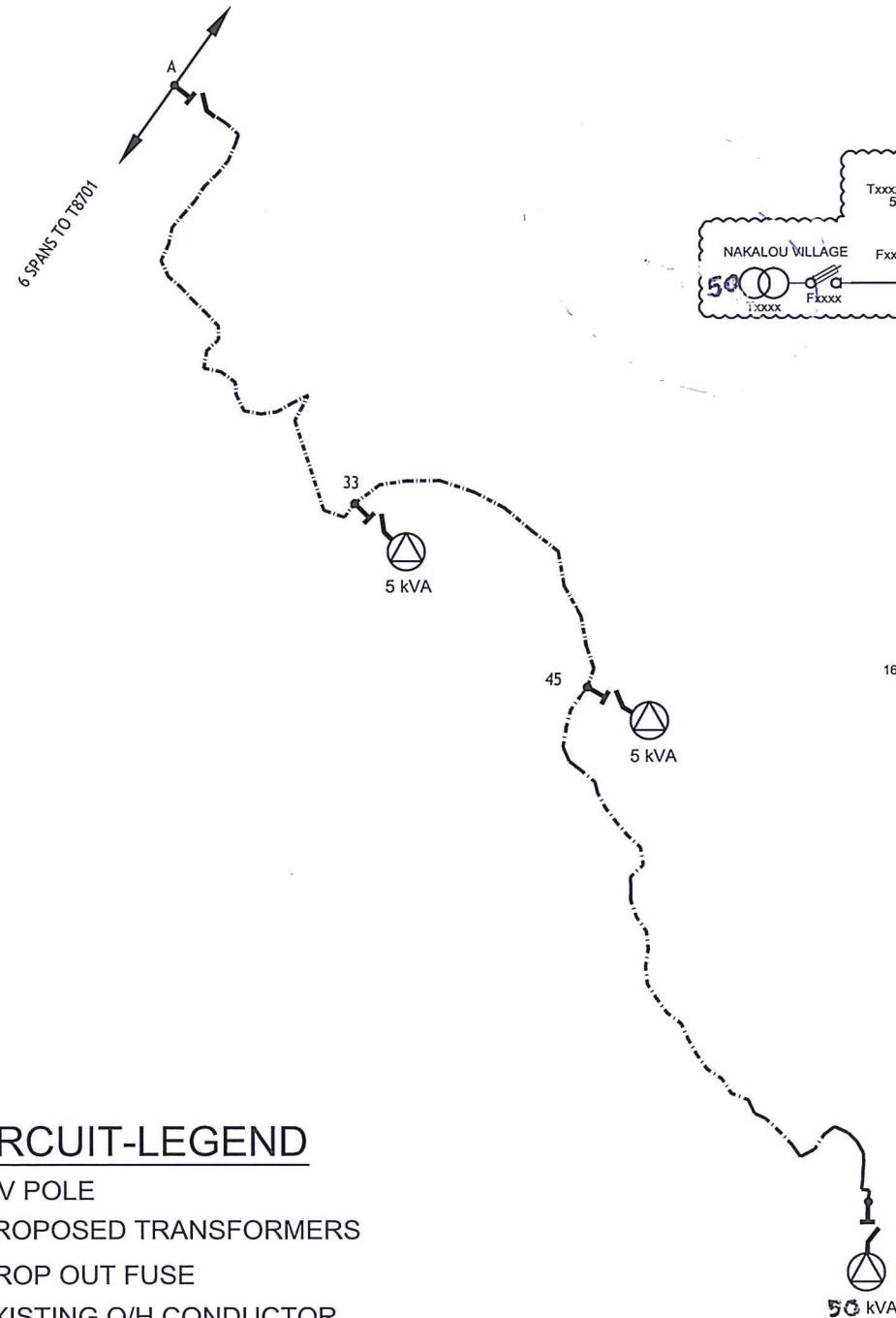
0	ORIGINAL ISSUE SI LAB01/17	09.04.18	JV			
No.	REVISION	DATE	BY	CHK	PSD	APP

FINAL SINGLE LINE

REF. DRWG. 04 N30 015

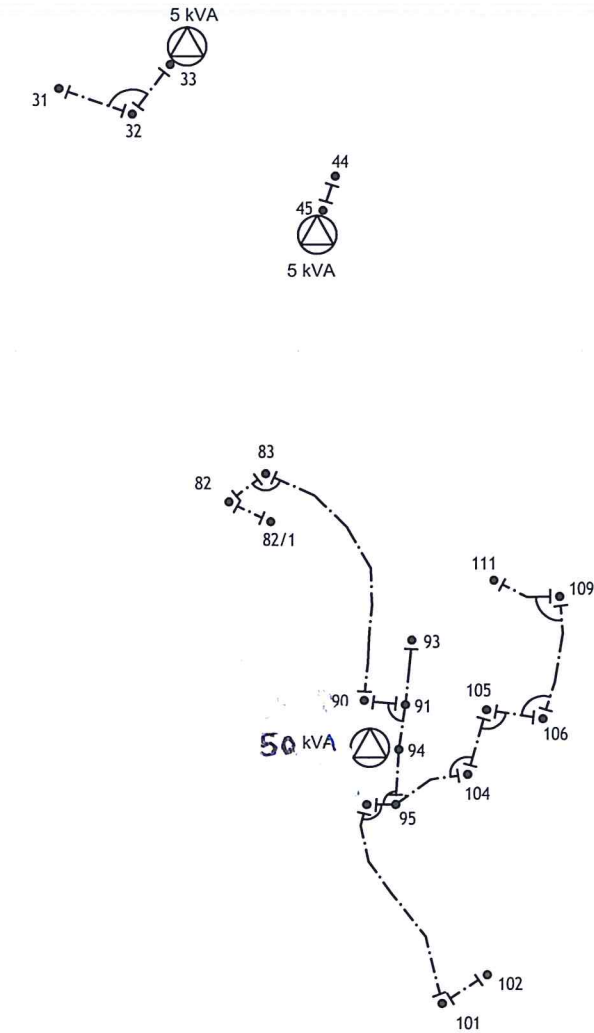
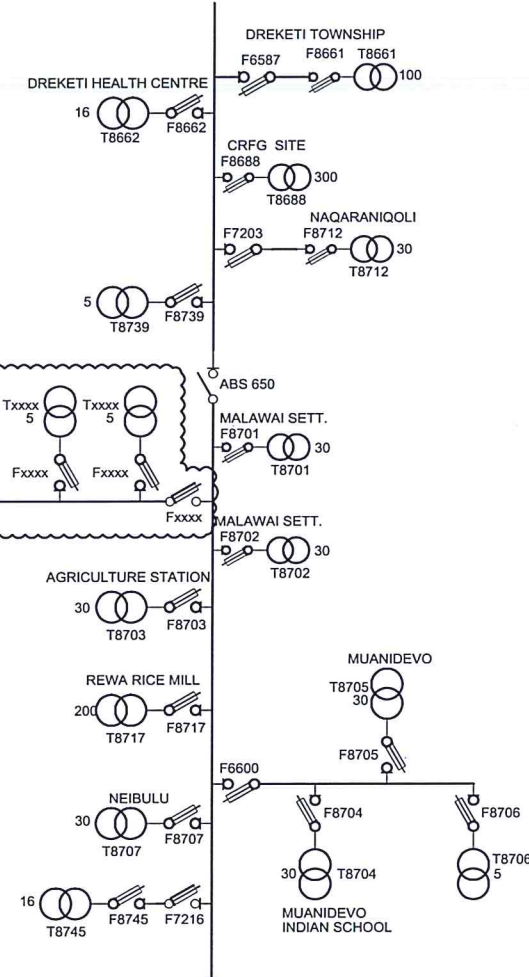
FINAL LV CIRCUIT

FINAL HV CIRCUIT



HV CIRCUIT-LEGEND

- HV POLE
 - ⊗ PROPOSED TRANSFORMERS
 - ⌋ DROP OUT FUSE
 - EXISTING O/H CONDUCTOR
 - - - STRING HV 3 x 7/3.75AAAC HELIUM CONDUCTOR
- 3Ø HV ROUTE LENGTH= 136m



LV CIRCUIT-LEGEND

- TERMINATION POINT
 - ⌋ BRIDGING POINT
 - ⌋ STRAIN POINT
 - ⊗ PROPOSED TRANSFORMER
 - EXISTING O/H LINE
 - - - STRING 2 x 7/3.75AAAC HELIUM
 - - - STRING 4 x 7/3.75AAAC HELIUM
- TOTAL ROUTE LENGTH = 194m
- TOTAL ROUTE LENGTH = 1,312m

SHEET 7 OF 7

								 DRAWN JONE 13.04.18 CHECKED DEEPAK 19.04.18 CHIEF DRAUGHTSMAN KAUSHAL 20/04/18 TEAM LEADER DESIGN & PLANNING RAJIV S 23/4/18 ENGINEER RAJIV S 23/4/18 HEAD OF DEPARTMENT 23/4/18	FIJI ELECTRICITY AUTHORITY					
									SUPPLY TO NAKALOU VILLAGE		DRAWING NUMBER			
									DREKETI DISTRICT		A3	04	N91	007
									NAKALOU VILLAGE (LAB01/17)		SCALE 1 : 2000			
0	ORIGINAL ISSUE SI LAB01/17	09.04.18	JV											
No.	REVISION	DATE	BY	CHK	PSD	APP								

