

INSULATED HOUSE SERVICE CUTOUTS (FUSE CARRIER)

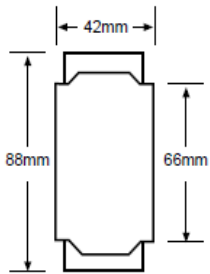
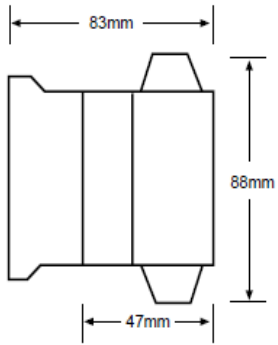


General Features

- Thermoplastic moulding giving improving mechanical strength and durability.
- Easy fuse replacement-fuse link self-locating in fuse clip.
- High pressure point contacts-wiping action ensures low resistance with silver plated base contacts.
- Carrier assembled by means of captive screw.
- Base moulding in one piece, increased mechanical strength-eliminates tracking.
- All phase terminals shrouded by fixed shield which is part of moulding.
- Plain brass terminals with silver plated contact surface for dependable operation.
- Tin plated fuse clips.
- Suitable for cable conductors 2.5sq.mm. to 50sq.mm.
- Anti-intrusion plate with double hole sealing facility, 100% tamperproof, allows base to be sealed independently of the handle.

Dimensions

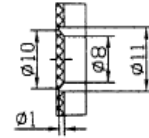
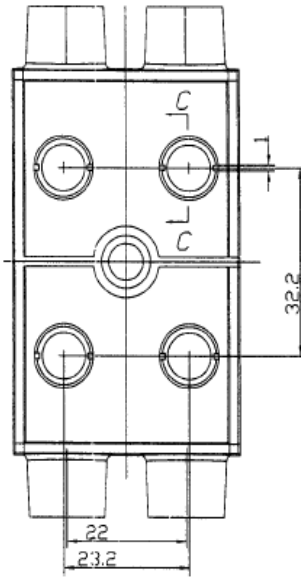
Front Wire & Back Wire



Single Hole Fixing
(1 x 6.35mm diameter hole)

Base

■ Cable entry holes (backwire)



Rear View