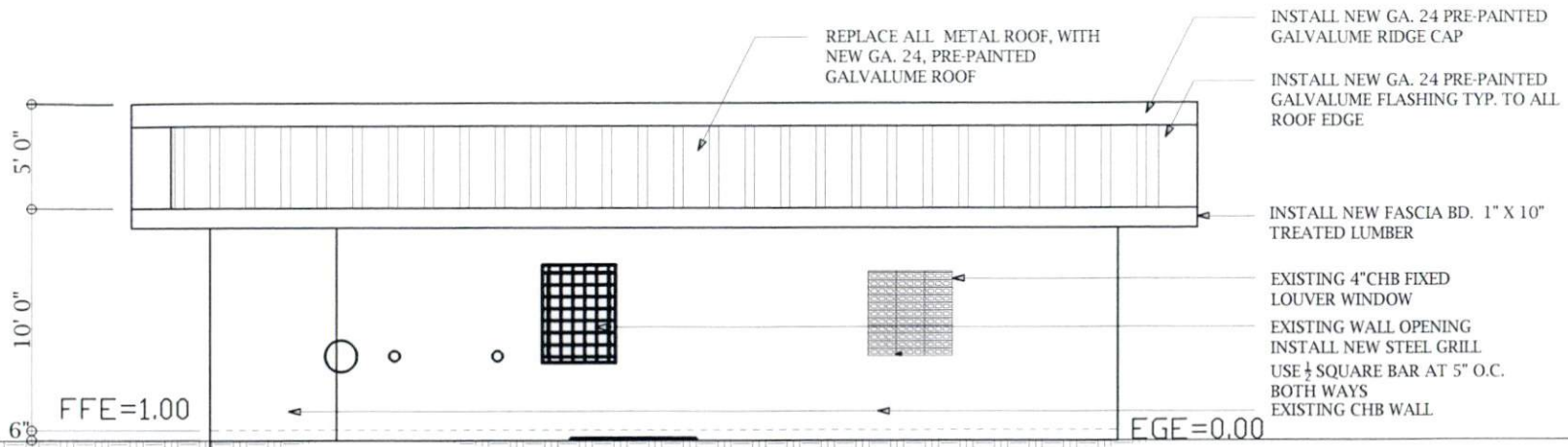
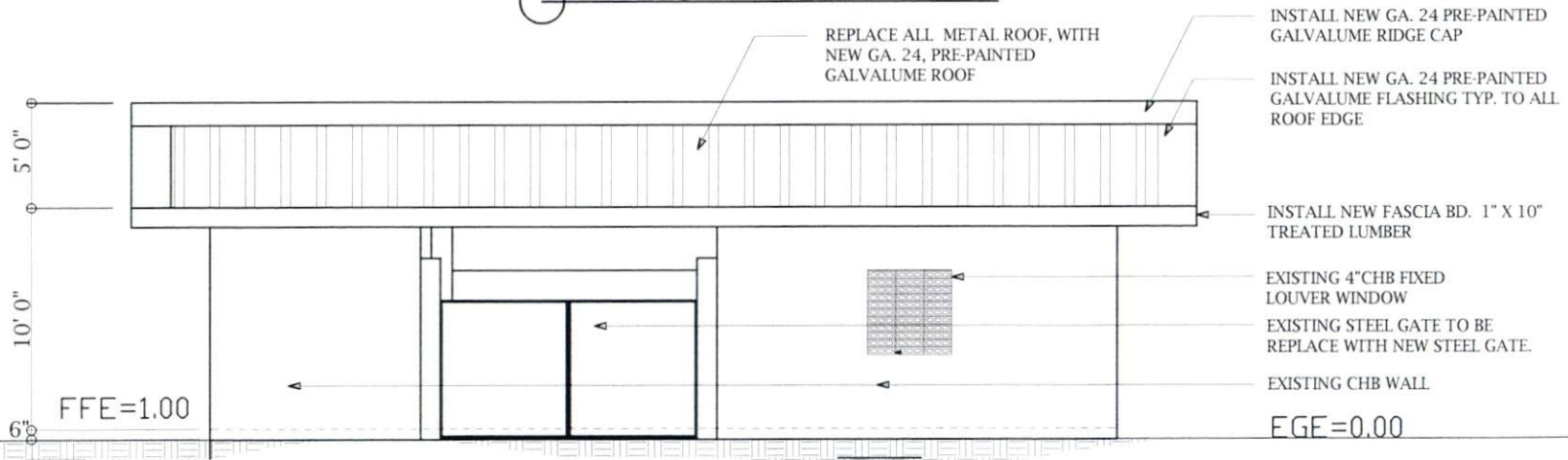


EXISTING FLOOR PLAN

PALAU PUBLIC UTILITIES CORP P.O. BOX 1372 KOROR, REPUBLIC OF PALAU TEL. # 488-3872 FAX # 488-2880	PROJECT TITLE APP- HOSE REEL HOUSE	OWNER: PALAU PUBLIC UTILITIES CORP.	DRAWN BY: SBM	SHEET CONTENT :	SHEET NO.:
	LOCATION: AIMELIK, PALAU		DESIGN BY:	EXISTING FLOOR PLAN	A 01
			CHECKED BY:		
			APPROVED BY:		

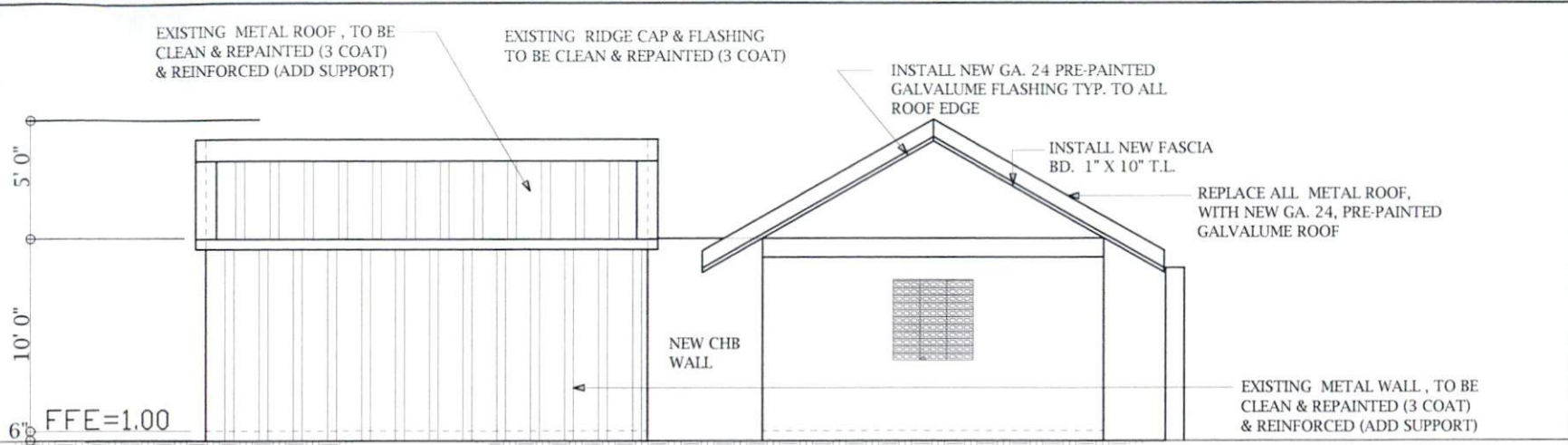


REAR SIDE ELEVATION

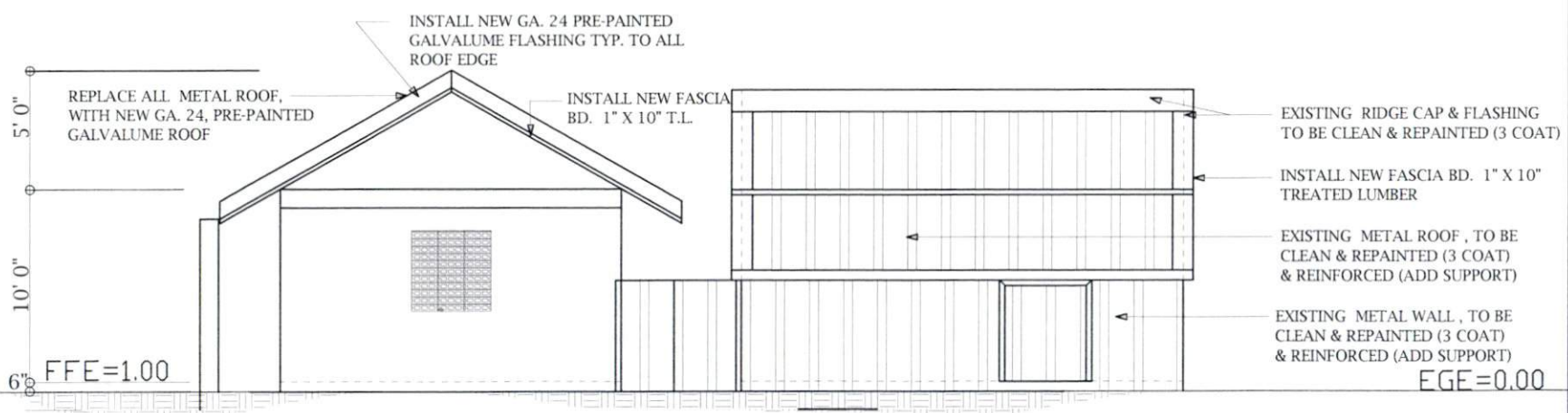


FRONT SIDE ELEVATION

PALAU PUBLIC UTILITIES CORP P.O. BOX 1372 KOROR, REPUBLIC OF PALAU TEL. # 488-3872 FAX # 488-2880	PROJECT TITLE	OWNER:	DRAWN BY: SBM	SHEET CONTENT :	SHEET NO.:
	APP- HOSE REEL HOUSE	PALAU PUBLIC UTILITIES CORP.	DESIGN BY:	ELEVATION	A 02
LOCATION: AIMELIK, PALAU		CHECKED BY:	APPROVED BY:		

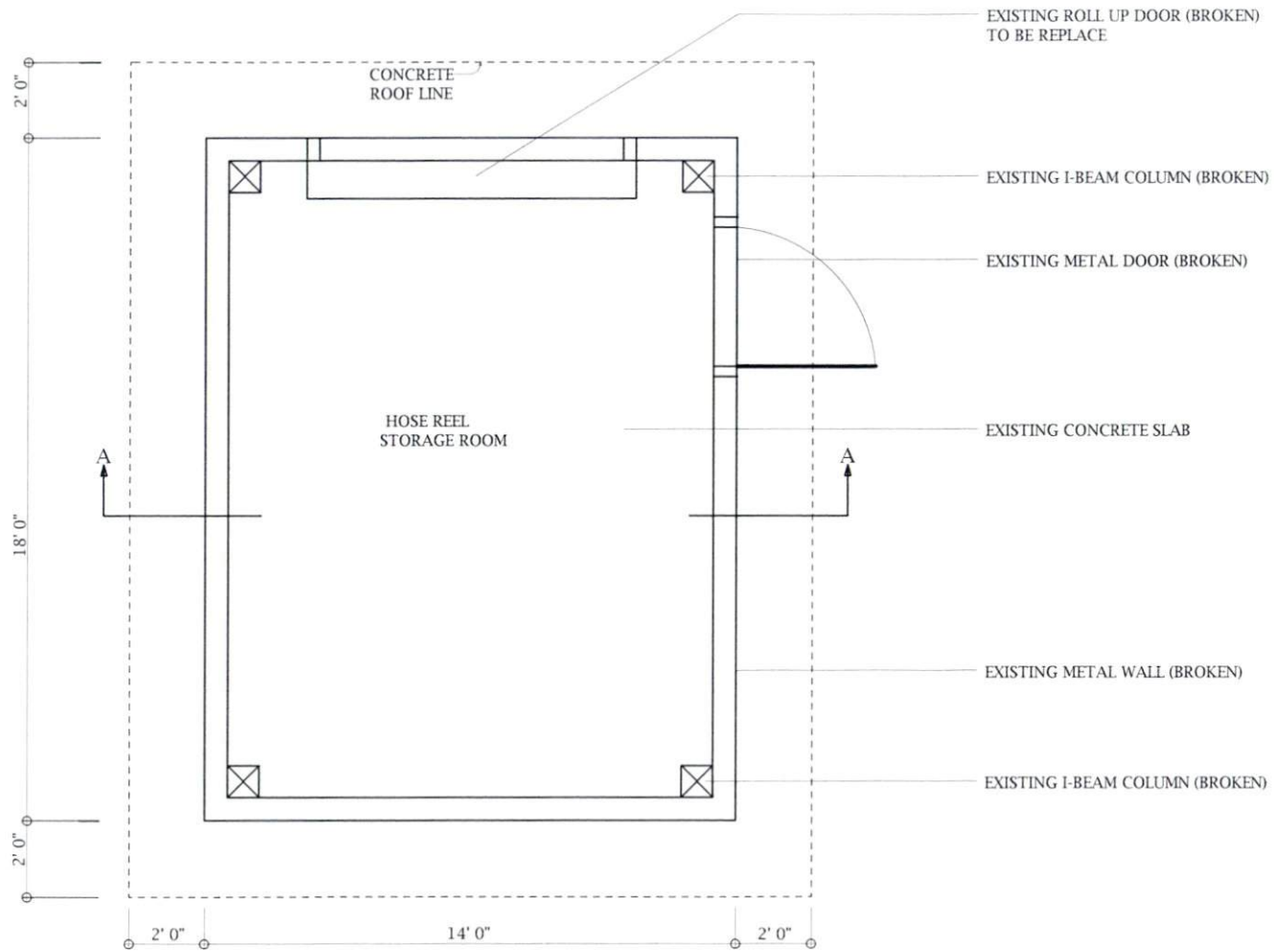


LEFT SIDE ELEVATION



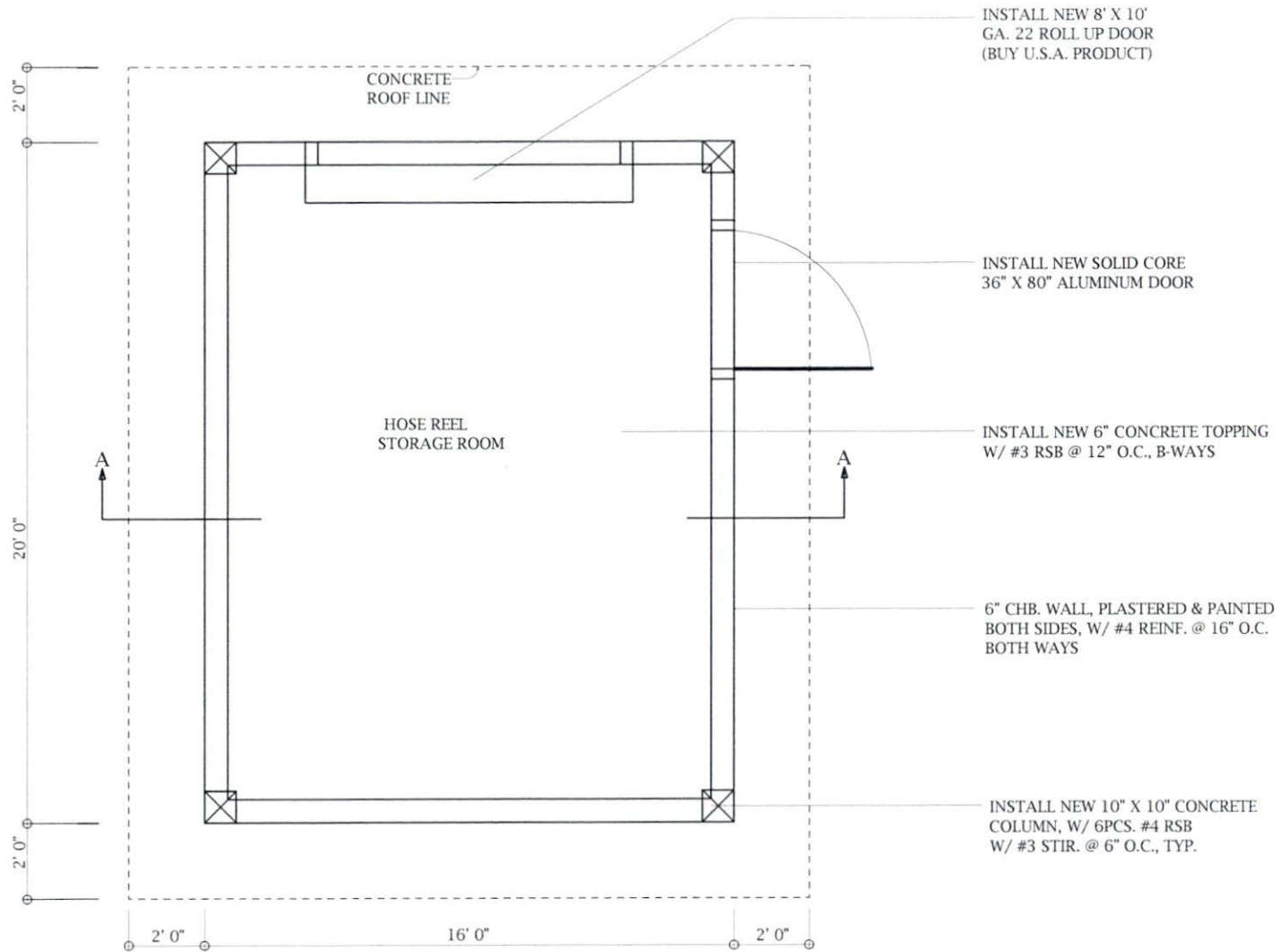
LEFT SIDE ELEVATION

PALAU PUBLIC UTILITIES CORP P.O. BOX 1372 KOROR, REPUBLIC OF PALAU TEL. # 488-3872 FAX # 488-2880	PROJECT TITLE	OWNER:	DRAWN BY: SBM	SHEET CONTENT :	SHEET NO.:
	APP- HOSE REEL HOUSE	PALAU PUBLIC UTILITIES CORP.	DESIGN BY:	ELEVATION	A 03
LOCATION: AIMELIIK, PALAU		CHECKED BY:	APPROVED BY:		



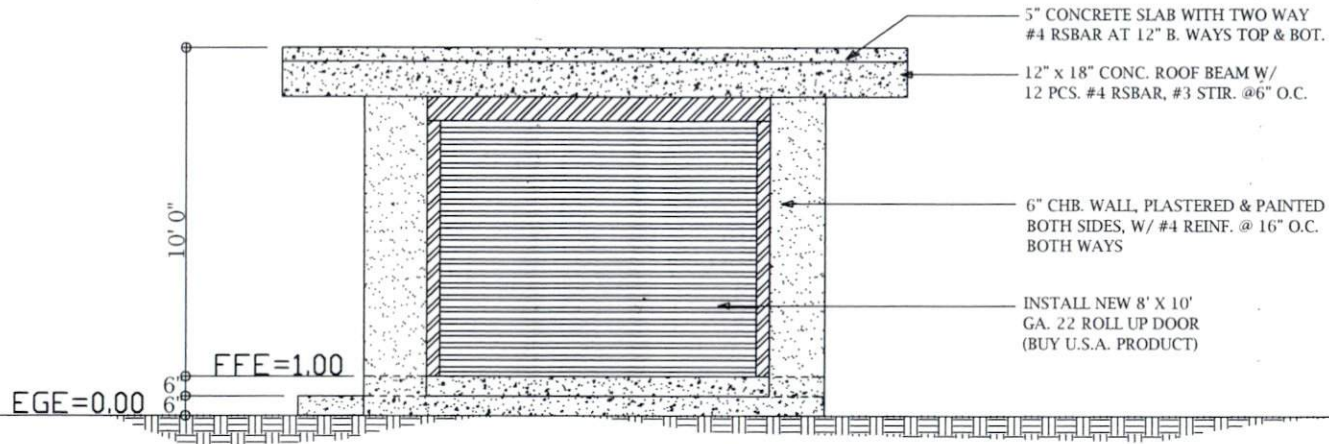
⊙ EXISTING FLOOR PLAN

PALAU PUBLIC UTILITIES CORP P.O. BOX 1372 KOROR, REPUBLIC OF PALAU TEL. # 488-3872 FAX # 488-2880	PROJECT TITLE	OWNER:	DRAWN BY: SBM	SHEET CONTENT :	SHEET NO.:
	APP- HOSE REEL HOUSE	PALAU PUBLIC UTILITIES CORP.	DESIGN BY:	FLOOR PLAN	⊙ A 01
LOCATION: AIMELIK, PALAU		CHECKED BY:	APPROVED BY:		

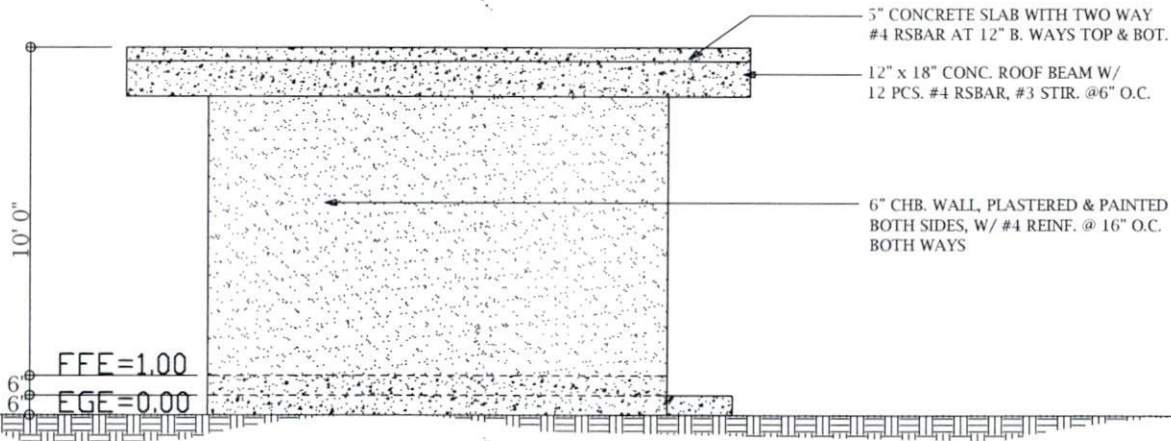


⊙ PROPOSE FLOOR PLAN

PALAU PUBLIC UTILITIES CORP P.O. BOX 1372 KOROR, REPUBLIC OF PALAU TEL. # 488-3872 FAX # 488-2880	PROJECT TITLE APP- HOSE REEL HOUSE	OWNER: PALAU PUBLIC UTILITIES CORP.	DRAWN BY: SBM	SHEET CONTENT : FLOOR PLAN	SHEET NO.: <div style="border: 1px solid black; border-radius: 50%; width: 40px; height: 40px; display: flex; align-items: center; justify-content: center; margin: 0 auto;"> <div style="text-align: center;"> <p>A</p> <hr style="width: 50%; margin: 0 auto;"/> <p>02</p> </div> </div>
	LOCATION: AIMELIIK, PALAU	DESIGN BY: CHECKED BY: APPROVED BY:			

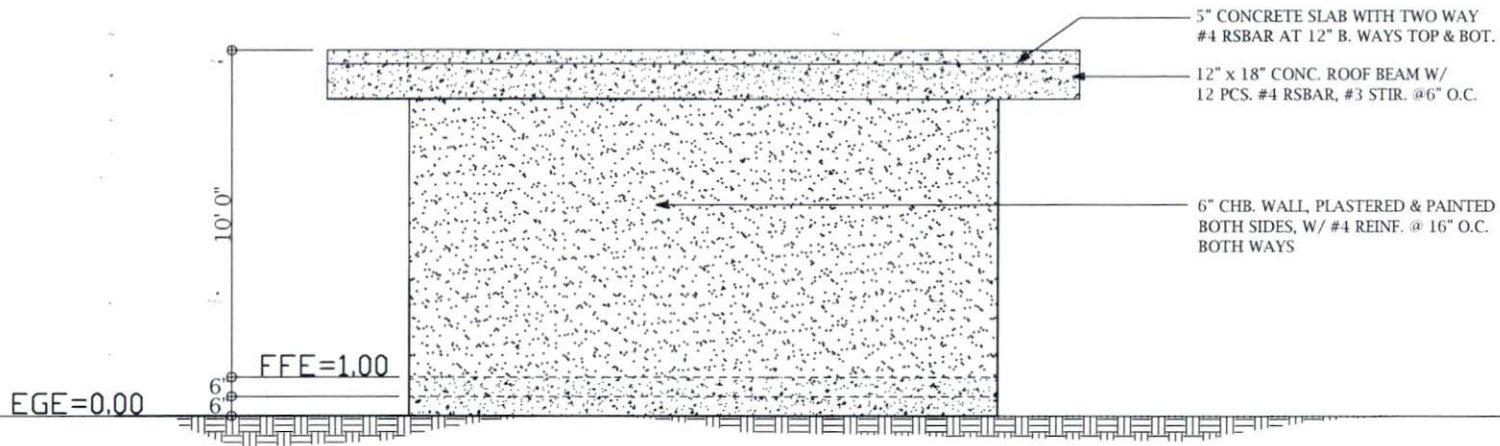


⊙ FRONT SIDE ELEVATION

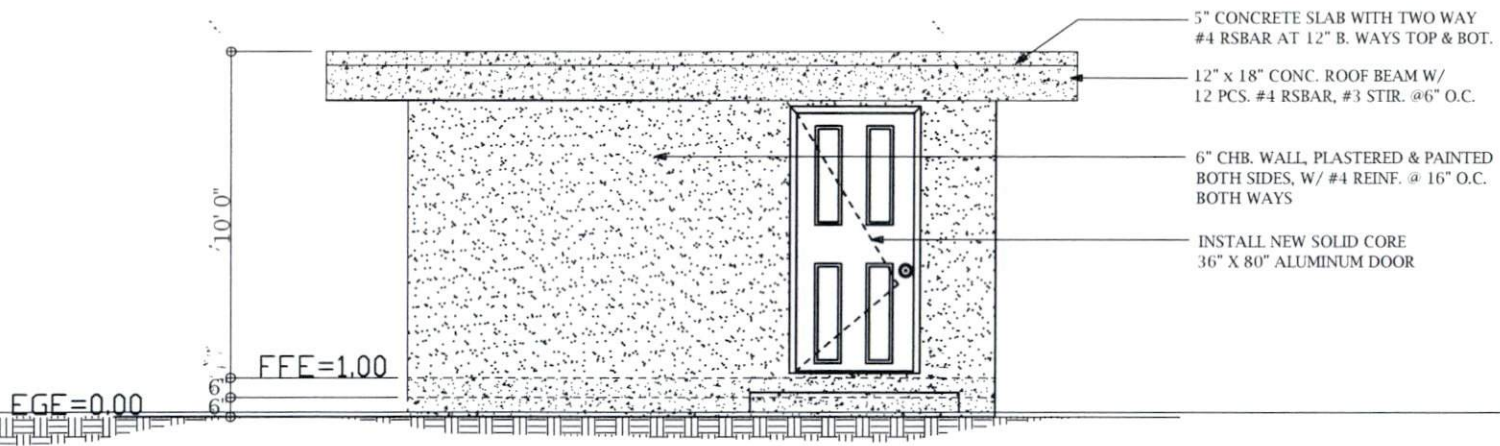


⊙ REAR SIDE ELEVATION

PALAU PUBLIC UTILITIES CORP P.O. BOX 1372 KOROR, REPUBLIC OF PALAU TEL. # 488-3872 FAX # 488-2880	PROJECT TITLE	OWNER:	DRAWN BY: SBM	SHEET CONTENT :	SHEET NO.:
	APP- HOSE REEL HOUSE	PALAU PUBLIC UTILITIES CORP.	DESIGN BY:	ELEVATION	⊙ A 03
LOCATION: AIMELIK, PALAU		CHECKED BY:	APPROVED BY:		

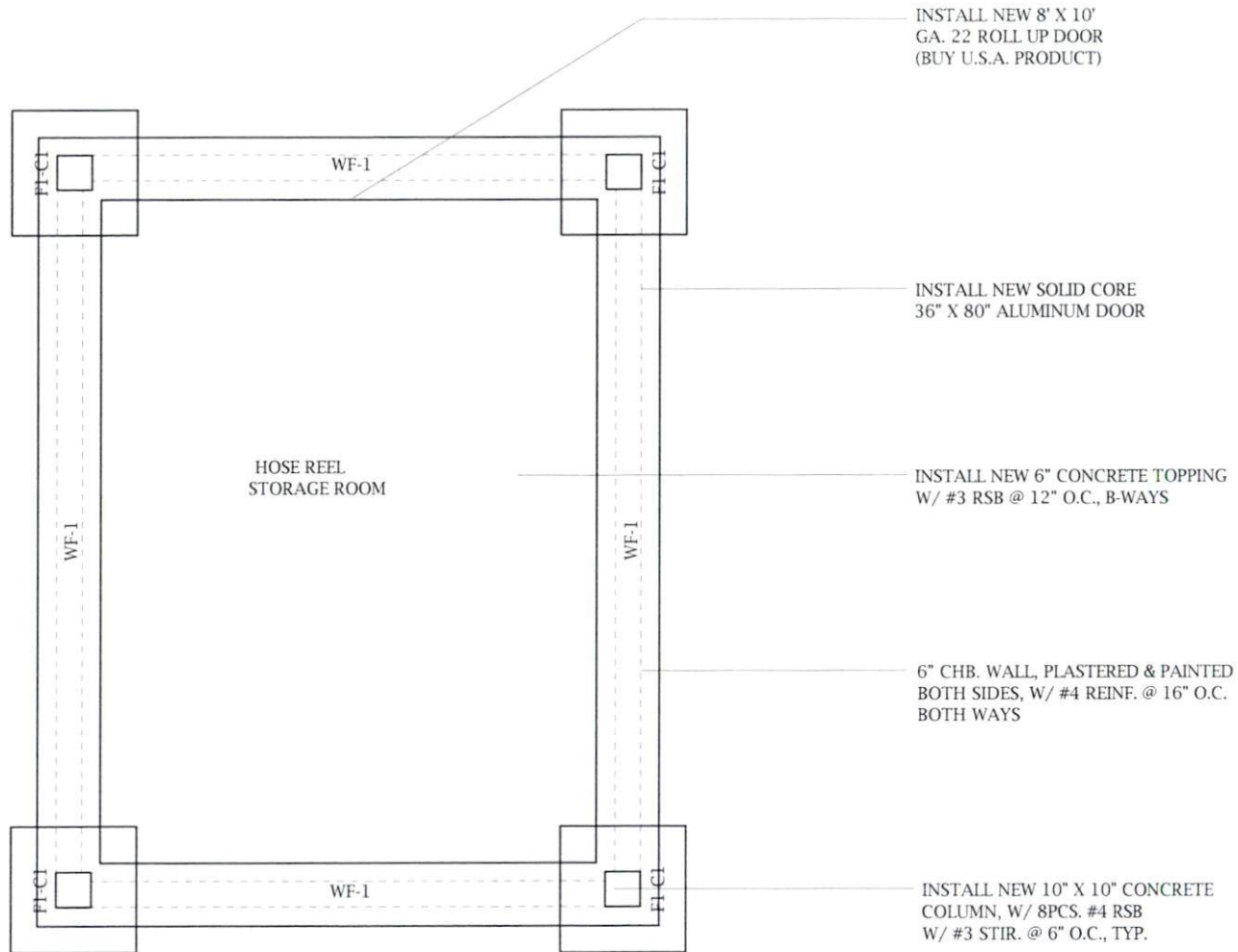


⊙ LEFT SIDE ELEVATION



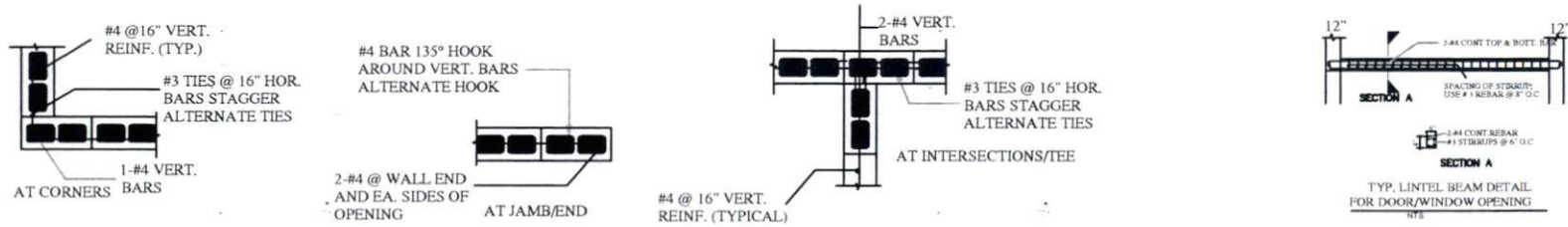
⊙ LEFT SIDE ELEVATION

PALAU PUBLIC UTILITIES CORP P.O. BOX 1372 KOROR, REPUBLIC OF PALAU TEL. # 488-3872 FAX # 488-2880	PROJECT TITLE	OWNER:	DRAWN BY: SBM	SHEET CONTENT :	SHEET NO.:
	APP- HOSE REEL HOUSE	PALAU PUBLIC UTILITIES CORP.	DESIGN BY:	ELEVATION	⊙ A 04
LOCATION: AIMELIK, PALAU		CHECKED BY:	APPROVED BY:		



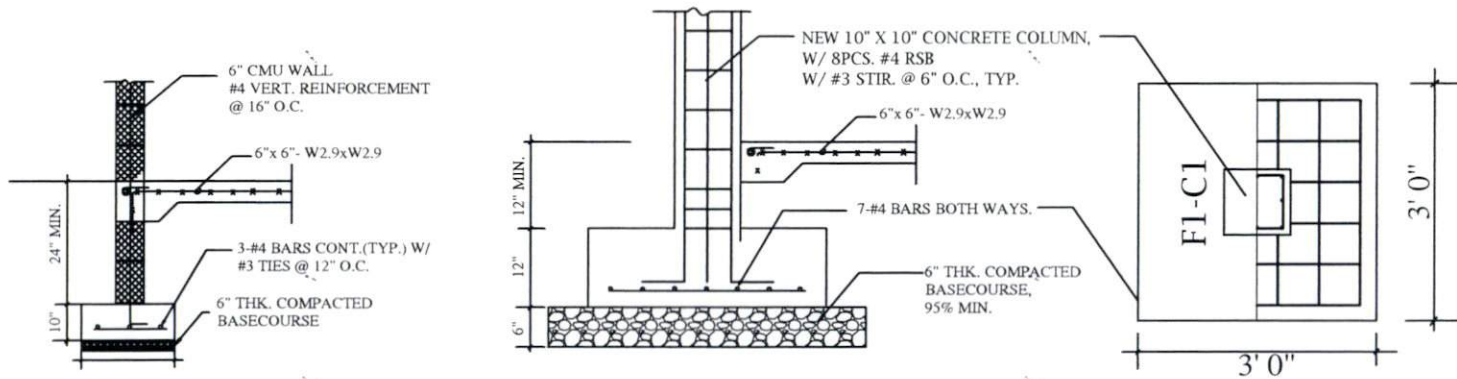
FOUNDATION/FOOTING PLAN

PALAU PUBLIC UTILITIES CORP	PROJECT TITLE	OWNER:	DRAWN BY: SBM	SHEET CONTENT :	SHEET NO.:
	APP- HOSE REEL HOUSE	PALAU PUBLIC UTILITIES CORP.	DESIGN BY:	FOOTING PLAN	
P.O. BOX 1372 KOROR, REPUBLIC OF PALAU	LOCATION: AIMELIHK, PALAU	CHECKED BY:	APPROVED BY:		
TEL. # 488-3872 FAX # 488-2880					



CMU TYP. REINFORCEMENT AND DETAILS

NTS



WF-1 SECTION A @ EXT. WALL (TYPICAL)

F1-C1 DETAILS

LEFT SIDE ELEVATION

PALAU PUBLIC UTILITIES CORP P.O. BOX 1372 KOROR, REPUBLIC OF PALAU TEL. # 488-3872 FAX # 488-2880	PROJECT TITLE	OWNER:	DRAWN BY: SBM	SHEET CONTENT :	SHEET NO.:
	APP- HOSE REEL HOUSE	PALAU PUBLIC UTILITIES CORP.	DESIGN BY:	CHB, FOOTING DETAILS	S 02
LOCATION: AIMELIIK, PALAU		CHECKED BY:	APPROVED BY:		